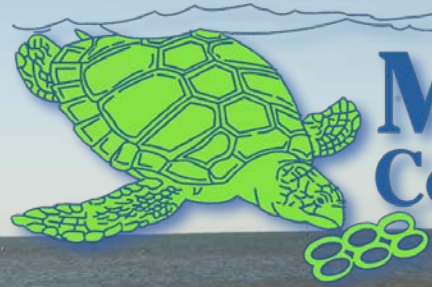




MISSISSIPPI STATE
UNIVERSITY™

EXTENSION



Mississippi Coastal Cleanup

Volunteer's Handbook

WELCOME TO THE MISSISSIPPI COASTAL CLEANUP!

Annually since 1988, volunteers just like you have been making a difference by removing tons of marine debris from our Mississippi coastlines. The **Mississippi Coastal Cleanup** is a partnership between the Mississippi State University Extension Service and the Mississippi Marine Debris Task Force. Our purpose is to facilitate cleanup events like this, while also raising awareness of the impacts of marine debris on the environment and providing information on ways we can reduce marine debris.

Marine debris is human-made litter, scattered across the entire ocean, that is swept along by currents and accumulates most noticeably along coastlines. It is estimated that by the year 2050, there will be more plastic weight in the ocean than fish weight. With those huge quantities of marine debris in the oceans, it's easy to see that marine debris poses a threat to us all. Everything—from the environment to the economy, from fishing to human health and safety, from microscopic plankton to

the giant blue whale—is impacted by the abundance of marine debris in the ocean.

The purpose of this handbook is to help guide you through all aspects of the **Mississippi Coastal Cleanup**; refer to it if you have any questions throughout the cleanup. Thank you for volunteering to make a difference. This day is much more than just picking up trash. It's an opportunity for a community to join together and inspire others to help take care of our coastal environments!



WE RECOMMEND *YOU* BRING:

- Water (preferably in a reusable bottle!)
- Closed-toe shoes
- Hat
- Sunscreen
- Gloves
- An enthusiastic attitude!

WE WILL PROVIDE:

- Data cards and clipboard
- Pencils
- Bags
- Surgical gloves
- First aid
- Hand sanitizer

Volunteer Instructions

1. The **first thing** to do upon arrival is identify your site captain and **sign in**.
2. You must be **18 years or older** to sign in. An adult must accompany minors. If you are in a group, only one person needs to sign in for the group.
3. Volunteers should work in pairs or small groups.
4. Each pair or group of volunteers will receive 1 data card, 1 pencil, 1 clipboard, gloves, 1 black trash bag, and 1 white trash bag.
5. You will be separating recyclables. White bags are for rigid plastic items that are to be recycled. Black trash bags are for general debris items. See the Trash Separation section for more details on how to separate trash.
6. When you are finished, bring the white bags of rigid plastic to the recycling coordinator. Leave the black bag of debris at your site's designated location as identified by your site captain.
7. Turn in your data cards to your site captain. This is required to receive your lunch cards. (Lunch will be provided 11 a.m.–1 p.m.)

Data Collection

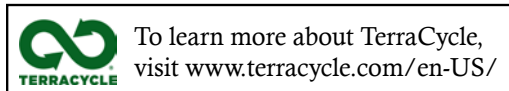
1. You need to fill out a data card for your **first bag** of trash only.
2. When filling out the data form, document all trash found, including the recyclables you have separated into the white bags, until your first black trash bag is filled.
3. Once your first black trash bag is filled, you may stop recording.
4. Keep your data cards until you are finished. When you are done, fill out the total number of trash bags your team has filled during your cleanup.
5. Be sure to include on the **front** of the data card:
 - Your cleanup site name
 - Your zone/county
 - Number of people working in your group
6. Be sure to include on the **back**:
 - Tally and total count of items found for first bag of trash filled per group
 - Total number of black trash bags filled
 - Total number of white trash bags filled
 - Estimated weight of all trash bags
 - Any dead/injured animals found

Ask your site captain if you have any questions about data collection.

Trash Separation

Mississippi Coastal Cleanup has partnered with TerraCycle™ to recycle plastic collected during the cleanup. This plastic will be recycled and turned into new plastic products. Below is a list of plastic items that should be separated and collected in the white trash bags.

Recycle items with these numbers:



Examples of Plastic Items

soda bottles	plastic cups
water bottles	plastic cutlery and plates
mouthwash bottles	plastic lids
cleaner bottles	plastic buckets
laundry detergent bottles	plastic trays
milk jugs	plastic funnels
medicine bottles	plastic tubes
pill bottles	plastic containers
shampoo bottles	plastic auto parts
soap bottles	plastic molds
juice bottles	plastic beach toys
condiment bottles	plastic furniture
yogurt containers	

If you have any questions about separating recyclables, don't hesitate to ask your site captain or the recycling coordinator, who will be at the recycle drop-off station.

Lunch Sites

Lunch is from 11 a.m. to 1 p.m. **Lunch cards are required to receive lunch.** You will receive lunch cards from your site captain after you have completed your cleanup.

HARRISON COUNTY

Barksdale Pavilion at Jones Park

Sponsored by RPM Pizza and the Gulfport Rotary Club

HANCOCK COUNTY

Washington Street Pavilion Burger Cookout

Sponsored by Office of Congressman Steven Palazzo and the Bay-Waveland Rotary Club

JACKSON COUNTY

MGCCC Jackson County Campus, Estuarine Education Center

Sponsored by The Shed Barbeque & Blues Joint

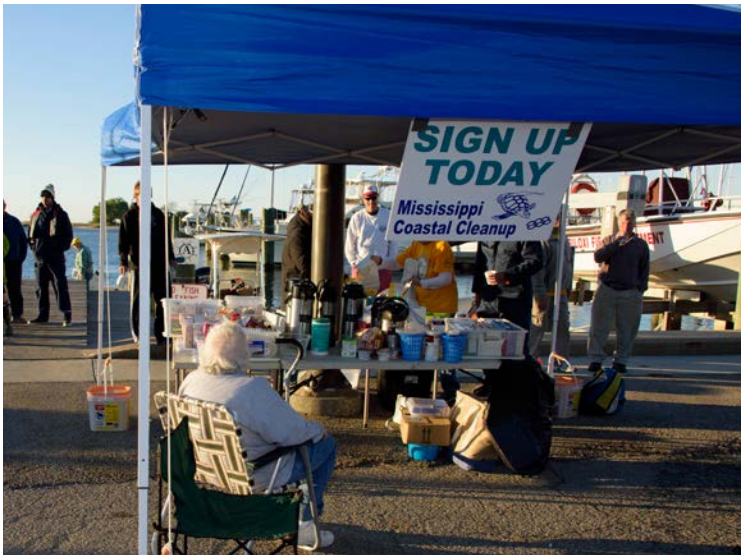
Prize Drawings

Prizes will be drawn *at the lunch locations*. Volunteers must *be present* at lunch sites during lunch hours to win. Lunch cards are the tickets for entry to the giveaway. To participate, volunteers must fill out the information on their lunch cards. This year's prizes include kayaks, T-shirts, and more.

Thank You!

The Mississippi Coastal Cleanup Program annually engages thousands of volunteers, removes tons of trash, raises marine debris awareness, and educates people about marine debris prevention and impacts across the Mississippi coast. This program would not exist without sponsors and volunteers like you! Thank you for all your hard work and support!

If you have any other questions, please visit our website www.mscoastalcleanup.org to access our frequently asked questions (FAQ) or to contact us.



Photos by Agricultural Communications



Publication 3065 (10-17)
MASGP-17-016

By **Eric Sparks**, Assistant Extension Professor, Coastal Research and Extension Center, **Emily Fischbach**, master's student, University of South Alabama, and **Amanda Sartain**, Extension Program Assistant, Coastal Research and Extension Center.

Copyright 2017 by Mississippi State University. All rights reserved. This publication may be copied and distributed without alteration for nonprofit educational purposes provided that credit is given to the Mississippi State University Extension Service.

Produced by Agricultural Communications.

We are an equal opportunity employer, and all qualified applicants will receive consideration for employment without regard to race, color, religion, sex, national origin, disability status, protected veteran status, or any other characteristic protected by law.

Extension Service of Mississippi State University, cooperating with U.S. Department of Agriculture. Published in furtherance of Acts of Congress, May 8 and June 30, 1914. GARY B. JACKSON, Director