

Tippah County Forestland Acreage, Ownership, Value, and Taxes Collected.

DESCRIPTION	UNIT	VALUE
Forestland Owners	number	1,994
Land in Forests	acres	171,577
Private Timberland Ownership	acres	144,326
Public Timberland Ownership	acres	27,251
Forestland Assessed Valued (2013)	dollars	4,053,561
Ad Valorem Tax Collections from Forestland (2013)	dollars	527,611
Value of Standing Timber in 2014	dollars	229,436,496
Value of Timber Harvested in 2014	dollars	4,617,778
Timber Severance Tax Collections (100%) (2013)	dollars	11,260
Tax to Forest Resource Development Program (80%)	dollars	9,008
Tax Returned to County Government (20%)	dollars	2,252

Sources: Forestland ownership, acreage, and timber volumes were estimated using the Mississippi Institute for Forest Inventory (MIFI) Dynamic Report Generator Software. Tax collections according to Mississippi Tax Commission. Timber harvest value according to the Mississippi Harvest of Forest Products Report.

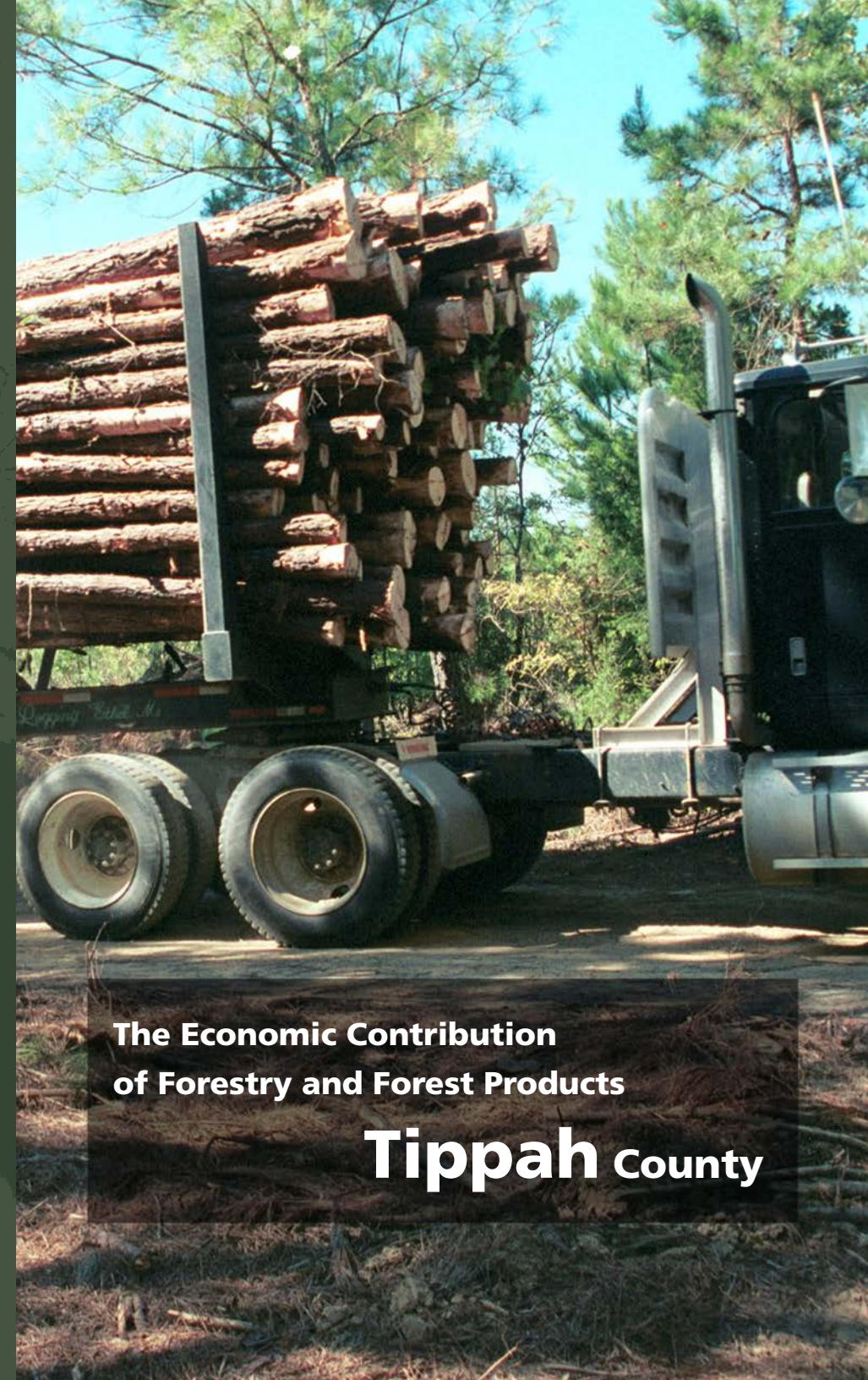


Copyright 2016 by Mississippi State University. All rights reserved. This publication may be copied and distributed without alteration for nonprofit educational purposes provided that credit is given to the Mississippi State University Extension Service.

By Dr. James E. Henderson, Associate Extension Professor, Forestry and Dr. Ian A. Munn, Professor, Forestry.

We are an equal opportunity employer, and all qualified applicants will receive consideration for employment without regard to race, color, religion, sex, national origin, disability status, protected veteran status, or any other characteristic protected by law.

M 1710
Extension Service of Mississippi State University, cooperating with U.S. Department of Agriculture. Published in furtherance of Acts of Congress, May 8 and June 30, 1914.
Dr. GARY JACKSON, Director (100-01-16)



The Economic Contribution
of Forestry and Forest Products

Tippah County

EMPLOYMENT AND INCOME IMPACTS

Forest-related economic activity in Tippah County during 2013 generated 1,551 jobs and more than \$55.5 million in income. That's about 17.4% of jobs and 17.3% of income in the county. Employment is the number of full- and part-time jobs in all sectors of the economy. Income is salaries and wages paid to employees.

TOTAL OUTPUT AND VALUE ADDED IMPACTS

Forestry and the forest products industry generated more than \$229 million, or about 17.9% of economic output, in Tippah County. Forest-related value added amounted to more than \$68.4 million, or about 13.6% of all value added in the county. The value of all goods and services produced is defined as total output. Value added is a portion of total output and represents the creation of new wealth.

TAX IMPACTS

Forest-related economic activity contributed an estimated \$15.8 million in tax revenue for federal, state, and local governments. This total includes tax revenue of \$11 million for federal and \$4.8 million for state and local governments.

Estimates developed using IMPLAN® software and data.

Impacts from Forest-Related Sectors on Employment and Income in Tippah County, Mississippi, 2013.

	NUMBER OF JOBS	% OF COUNTY	INCOME (\$)	% OF COUNTY
DIRECT IMPACT FROM FOREST-RELATED SECTORS				
Forestry/Logging	54	0.60%	1,302,034	0.41%
Solid Wood Products	91	1.02%	4,397,483	1.37%
Pulp/Paper	0	0.00%	0	0.00%
Wood Furniture	906	10.18%	33,735,019	10.49%
Subtotal	1,050	11.80%	39,434,536	12.27%
INDIRECT AND INDUCED IMPACTS ON SECTORS				
Government	85	0.96%	3,412,188	1.06%
Retail Trade	69	0.78%	1,669,133	0.52%
Health/Social Services	56	0.63%	1,970,226	0.61%
Transportation/ Warehousing	45	0.51%	1,392,781	0.43%
Accommodation/ Food Services	40	0.45%	838,814	0.26%
Scientific/Tech Services	32	0.36%	682,004	0.21%
Finance/Insurance	32	0.36%	787,822	0.25%
Other Services	27	0.31%	876,631	0.27%
Administrative/Waste	24	0.27%	535,737	0.17%
Construction	21	0.24%	862,011	0.27%
Wholesale Trade	17	0.20%	1,744,718	0.54%
Real Estate/Rental	13	0.14%	98,474	0.03%
Information	11	0.12%	394,826	0.12%
Educational Services	10	0.11%	297,232	0.09%
Ag/Forestry/Fish/Hunt	7	0.08%	200,283	0.06%
Manufacturing	5	0.05%	185,293	0.06%
Utilities	2	0.03%	162,216	0.05%
Entertainment/Recreation	2	0.02%	25,448	0.01%
Company Management	1	0.02%	10,010	0.00%
Mining	0	0.00%	818	0.00%
Subtotal	501	5.63%	16,146,665	5.02%
TOTAL IMPACT	1,551	17.42%	55,581,201	17.29%
Rest of County	7,349	82.58%	265,862,438	82.71%
Total in County	8,900	100.00%	321,443,639	100.00%

Impacts from Forest-Related Sectors on Total Output and Value Added in Tippah County, Mississippi, 2013.

	OUTPUT (\$)	% OF COUNTY	VALUE ADDED (\$)	% OF COUNTY
DIRECT IMPACT FROM FOREST-RELATED SECTORS				
Forestry/Logging	3,795,688	0.30%	1,523,302	0.30%
Solid Wood Products	20,882,065	1.63%	4,620,124	0.92%
Pulp/Paper	0	0.00%	0	0.00%
Wood Furniture	151,178,103	11.83%	34,189,463	6.80%
Subtotal	175,855,856	13.76%	40,332,889	8.03%
INDIRECT AND INDUCED IMPACTS ON SECTORS				
Government	4,984,443	0.39%	4,356,879	0.87%
Retail Trade	4,975,870	0.39%	2,992,624	0.60%
Health/Social Services	3,876,394	0.30%	2,205,246	0.44%
Transportation/ Warehousing	5,287,517	0.41%	1,538,175	0.31%
Accommodation/ Food Services	2,166,764	0.17%	1,186,618	0.24%
Scientific/Tech Services	2,387,971	0.19%	1,004,835	0.20%
Finance/Insurance	3,316,235	0.26%	1,092,070	0.22%
Other Services	1,593,177	0.12%	926,662	0.18%
Administrative/Waste	1,555,941	0.12%	775,432	0.15%
Construction	3,324,719	0.26%	910,515	0.18%
Wholesale Trade	4,278,978	0.33%	2,902,712	0.58%
Real Estate/Rental	8,268,956	0.65%	5,999,868	1.19%
Information	2,107,932	0.16%	718,146	0.14%
Educational Services	755,181	0.06%	402,941	0.08%
Ag/Forestry/Fish/Hunt	360,436	0.03%	251,202	0.05%
Manufacturing	1,097,929	0.09%	319,436	0.06%
Utilities	2,499,575	0.20%	476,063	0.09%
Entertainment/Recreation	140,714	0.01%	42,220	0.01%
Company Management	170,293	0.01%	37,428	0.01%
Mining	4,134	0.00%	1,968	0.00%
Subtotal	53,153,160	4.16%	28,141,037	5.60%
TOTAL IMPACT	229,009,016	17.92%	68,473,927	13.63%
Rest of County	1,048,942,478	82.08%	434,035,421	86.37%
Total in County	1,277,951,494	100.00%	502,509,348	100.00%

TIPPAH

Forestry and forest products are important to Tippah County's economy. They contribute to many sectors of the economy. The economic contribution of forest-related sectors and their impacts on other sectors can be estimated using input-output analysis. Using 2013 data, this study estimates the total economic contribution of forestry and the forest products industry to Tippah County, Mississippi.

