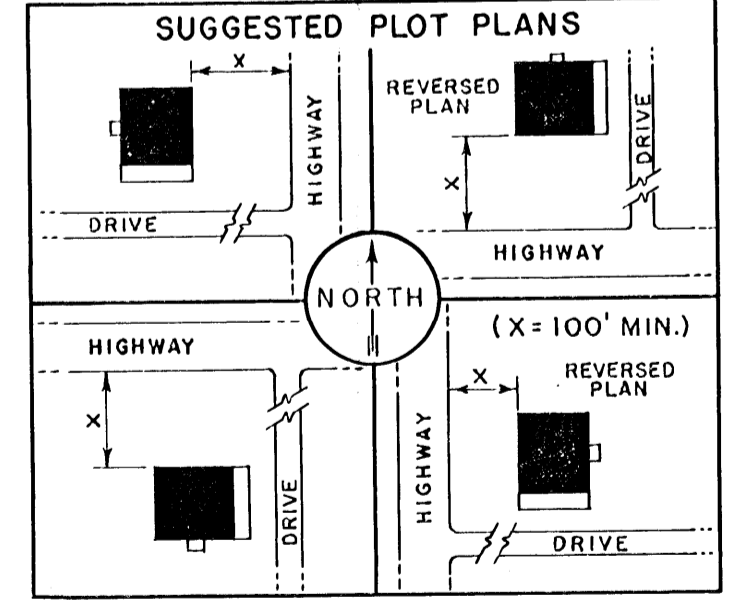
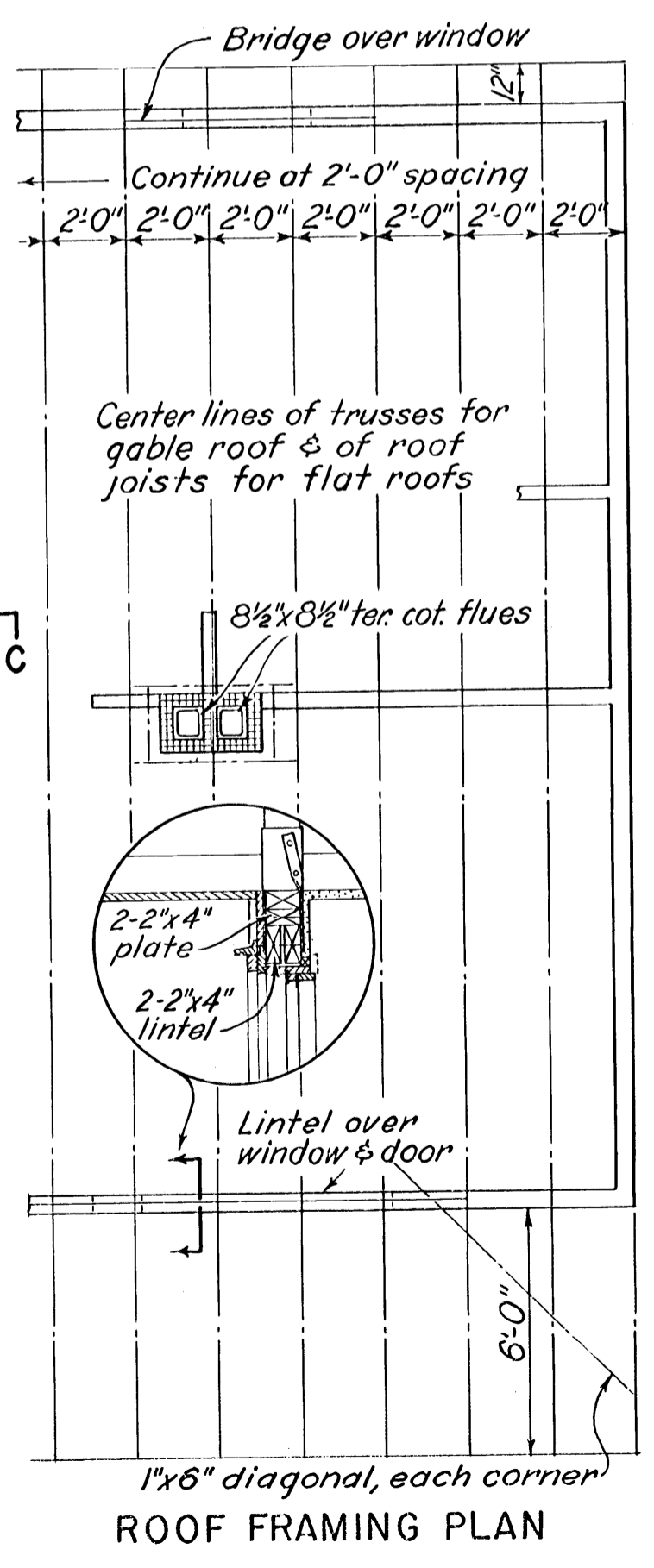
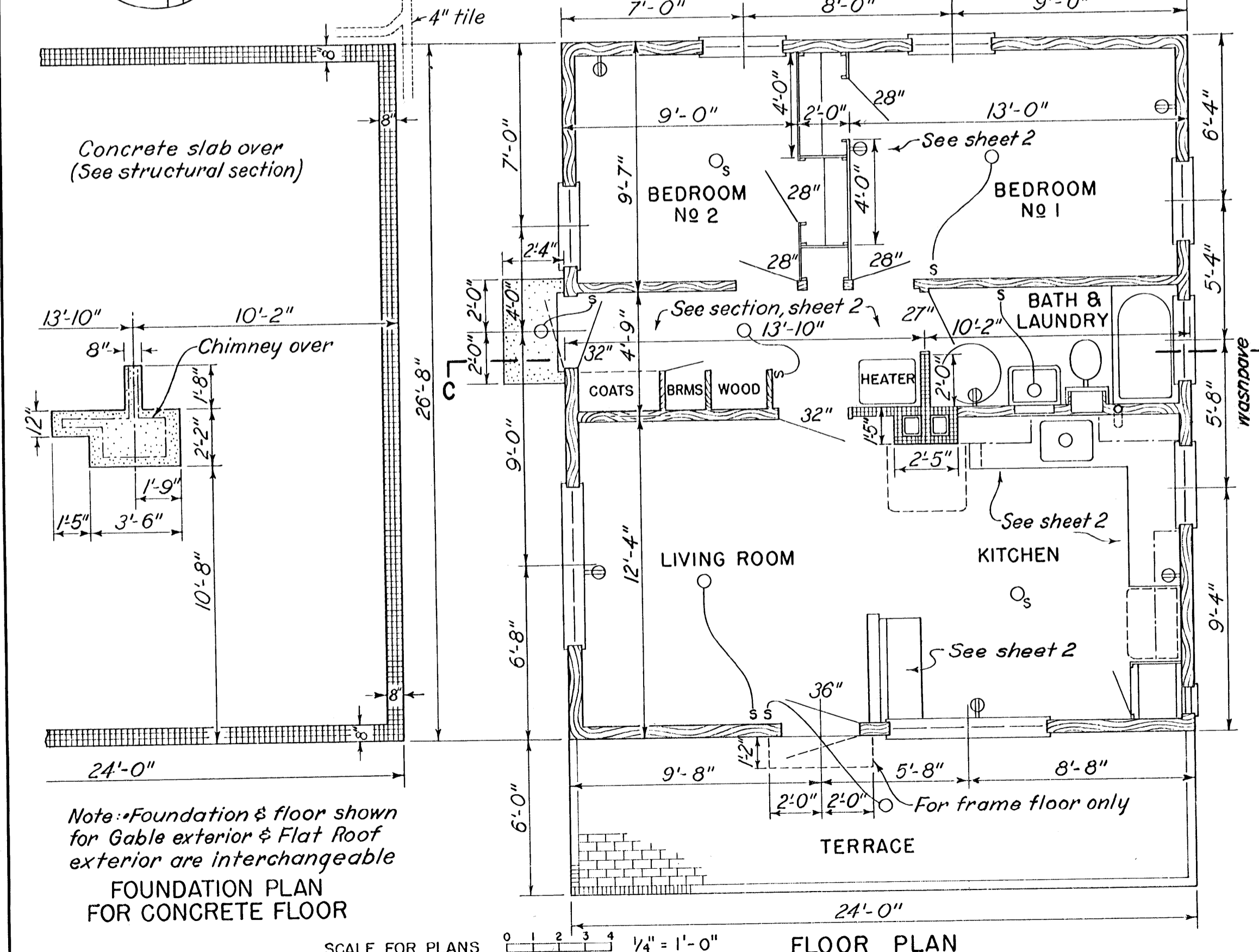
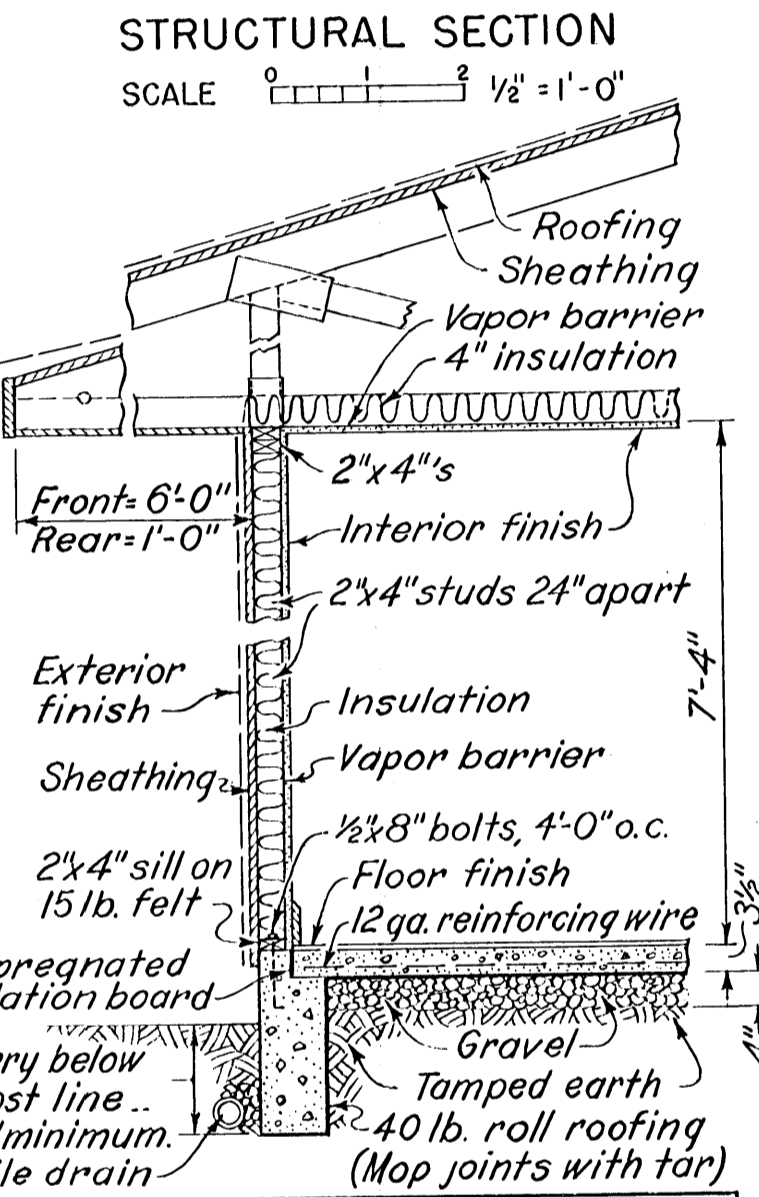
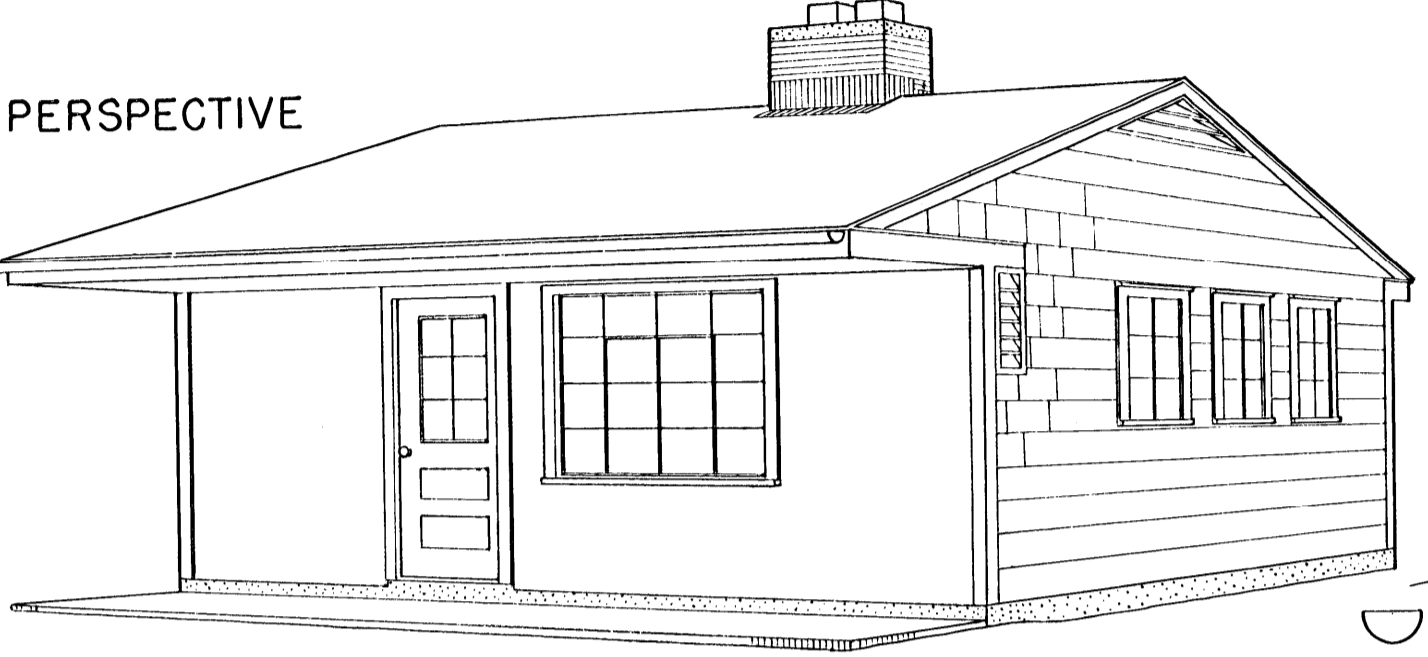
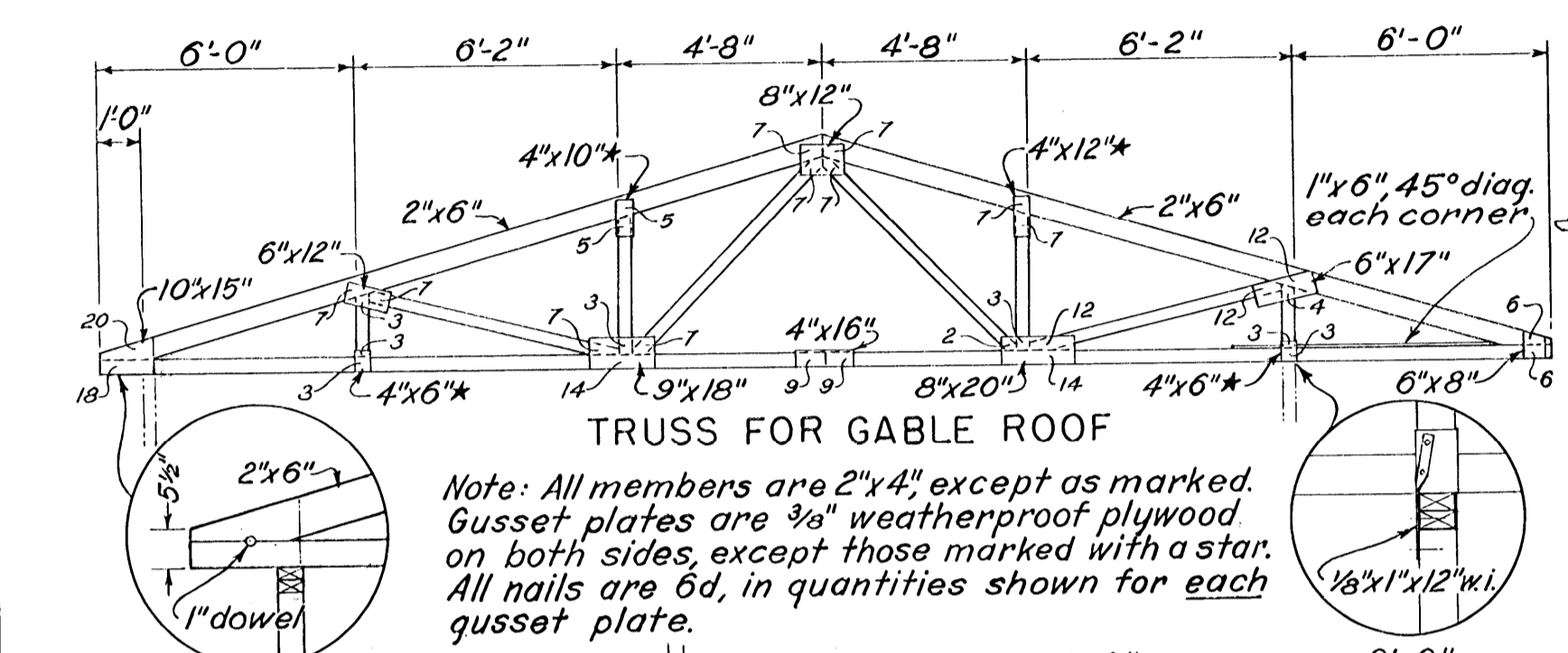


METAL SASH SCHEDULE

- ① 3'-1" x 3'-2"
- ② " x 4'-2"
- ③ 5'-9" x "

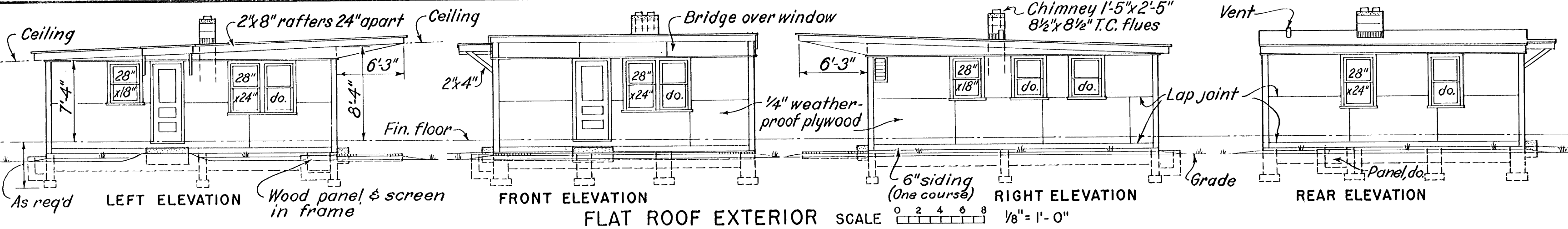
To be supplied with wood frames (Package window) and screens by sash manufacturer. Double-hung sash of Flat Roof exterior may be substituted



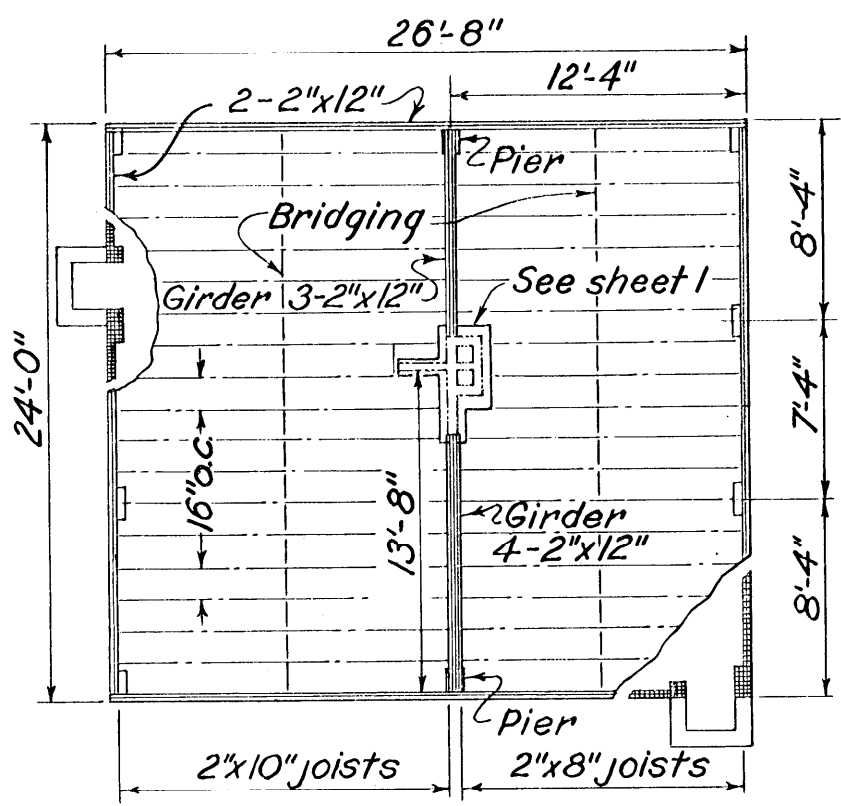
COOPERATIVE EXTENSION WORK IN AGRICULTURE AND HOME ECONOMICS
STATE OF MISSISSIPPI
MISSISSIPPI STATE UNIVERSITY
AND
UNITED STATES DEPARTMENT OF AGRICULTURE COOPERATING

2 BEDROOM CABIN

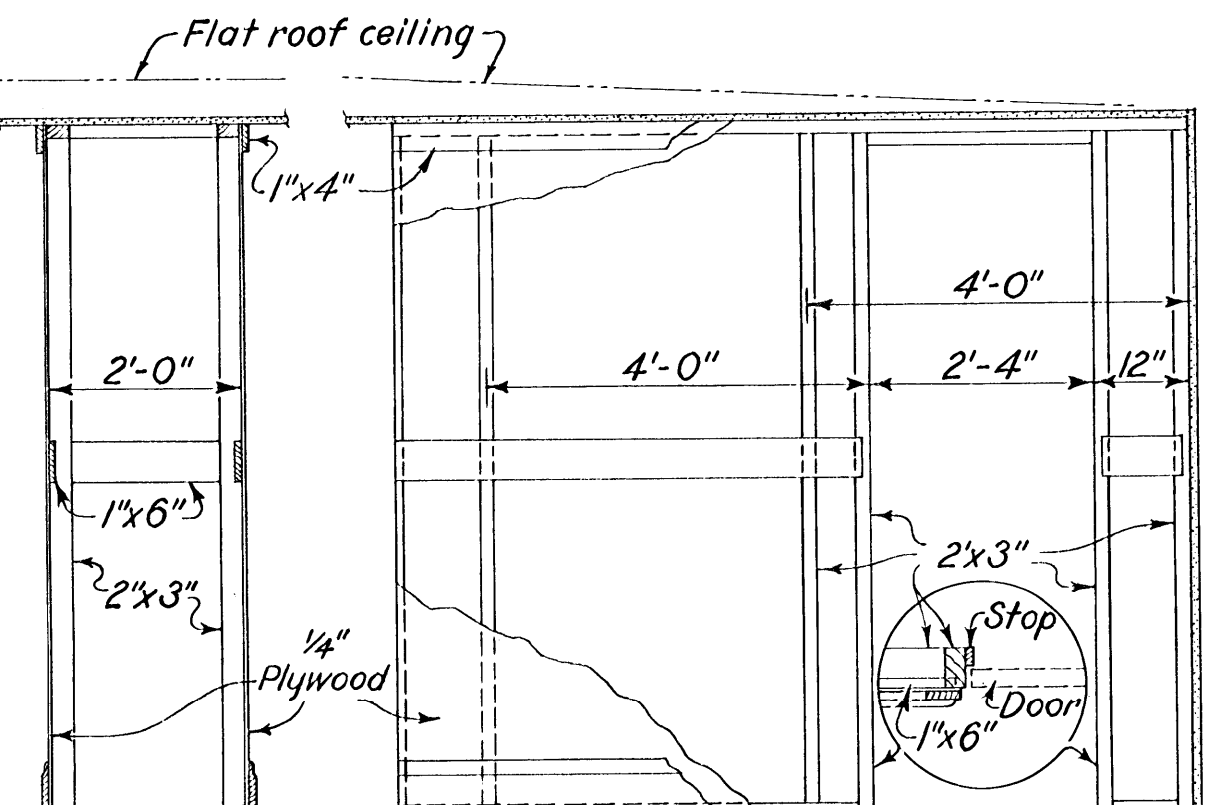
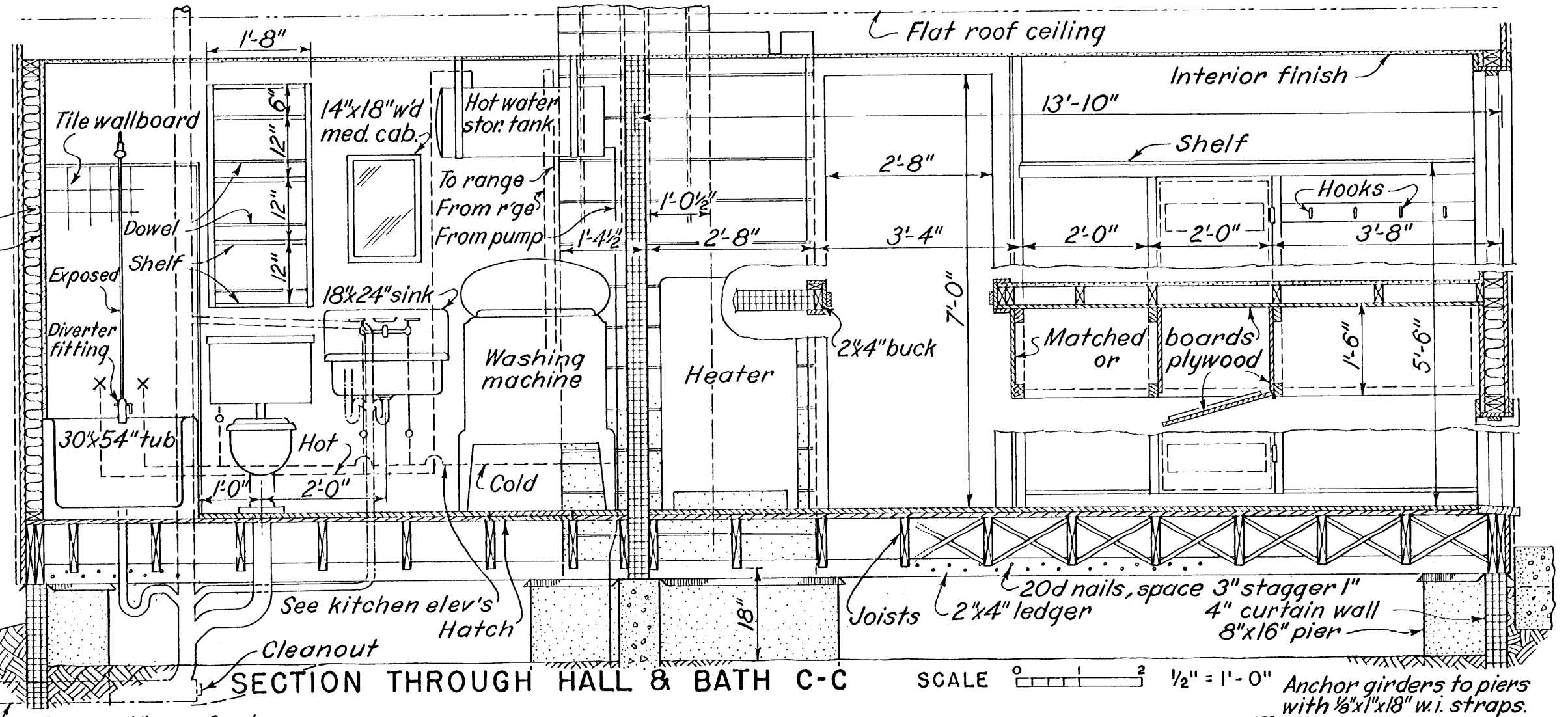
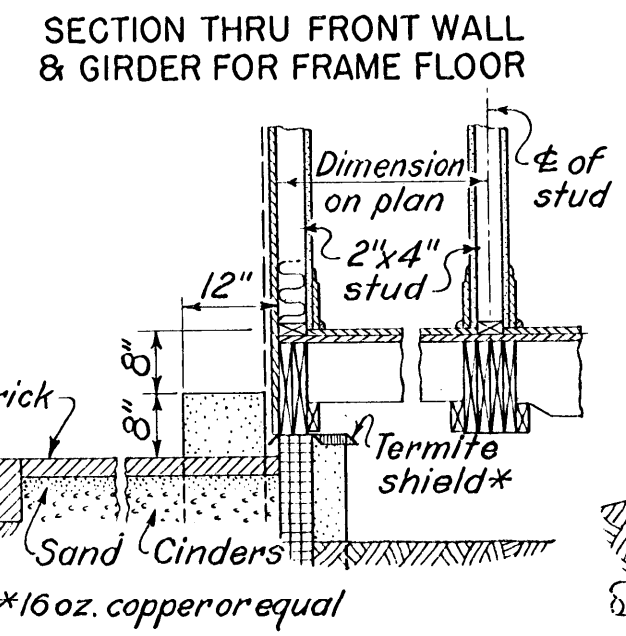
USDA '47 EX. 7010 SHEET 1 OF 2



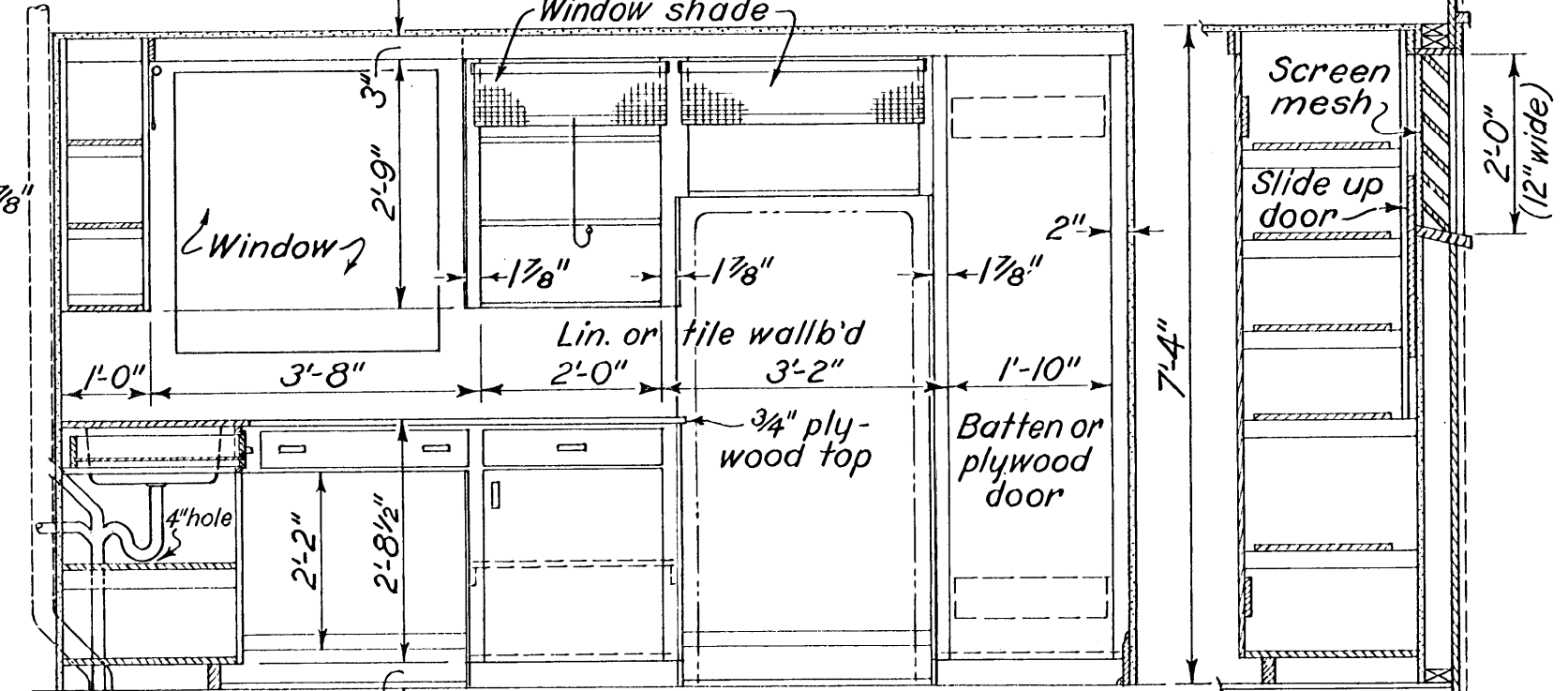
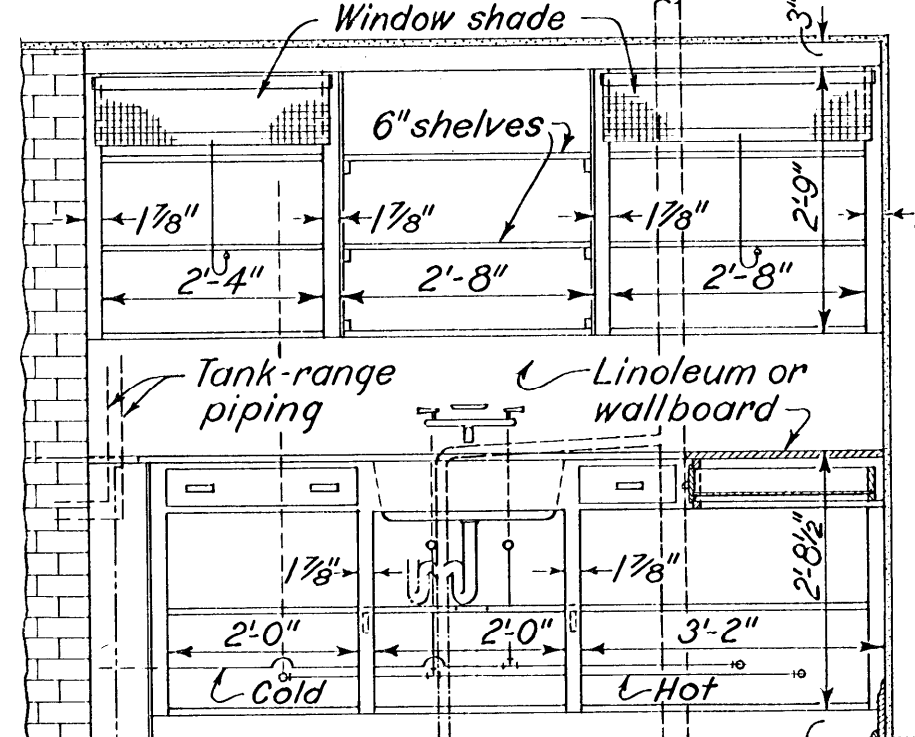
WINDOWS
Standard double hung sash are indicated. Frames to be modified for interior wallboard. Metal sash of Gable Roof exterior may be substituted. Use flat interior trim.



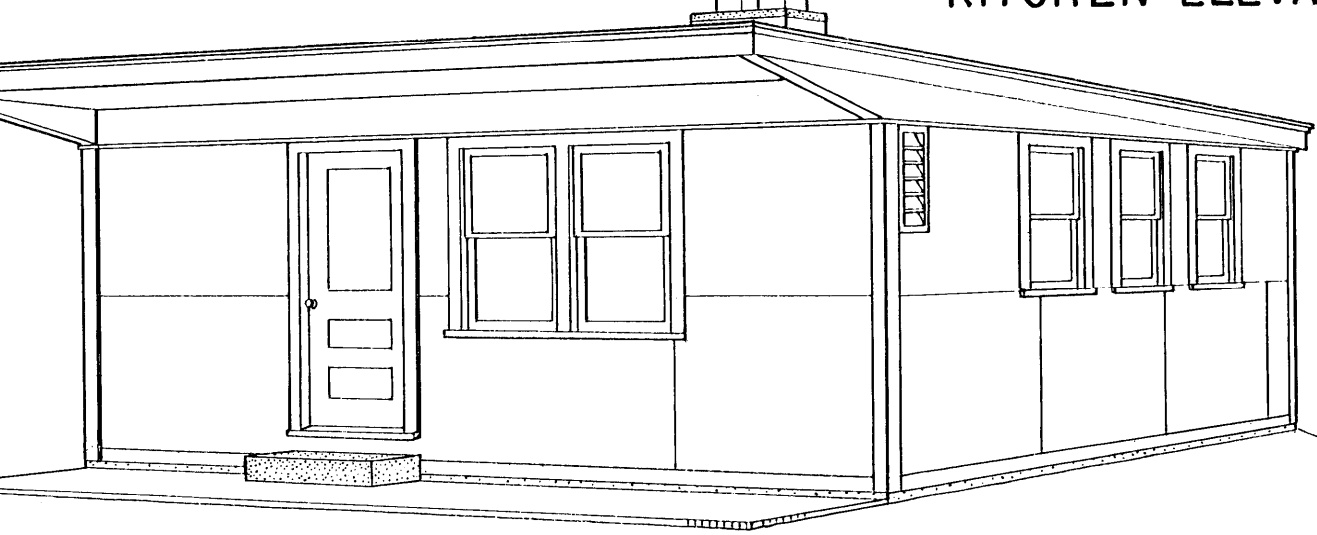
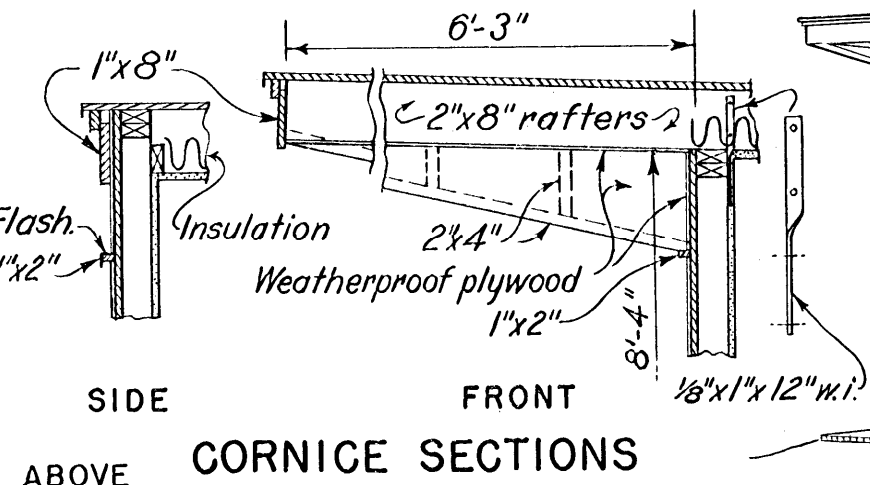
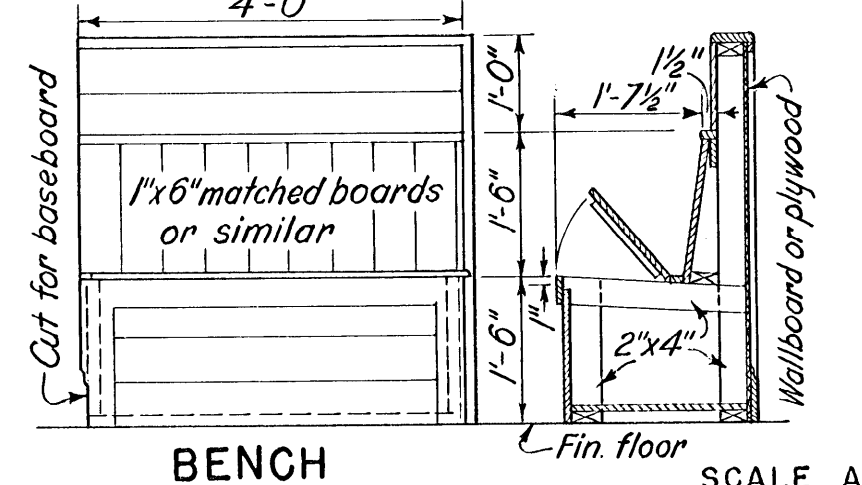
Note: Foundation & floor shown for Flat Roof exterior & Gable exterior are interchangeable



SECTION B.R. NO 1 ELEVATION
BEDROOM CLOSETS Finish bedroom wall & ceilings as for one room. Then erect framing, cover & apply trim (See plan) SCALE 0 2 4 1/2" = 1'-0"



SECTION B KITCHEN ELEVATIONS Details from Ex. 7024 may be used here



COOPERATIVE EXTENSION WORK IN AGRICULTURE AND HOME ECONOMICS
MISSISSIPPI STATE UNIVERSITY
AND
UNITED STATES DEPARTMENT OF AGRICULTURE COOPERATING

2 BEDROOM CABIN

USDA '47 EX. 7010 SHEET 2 OF 2