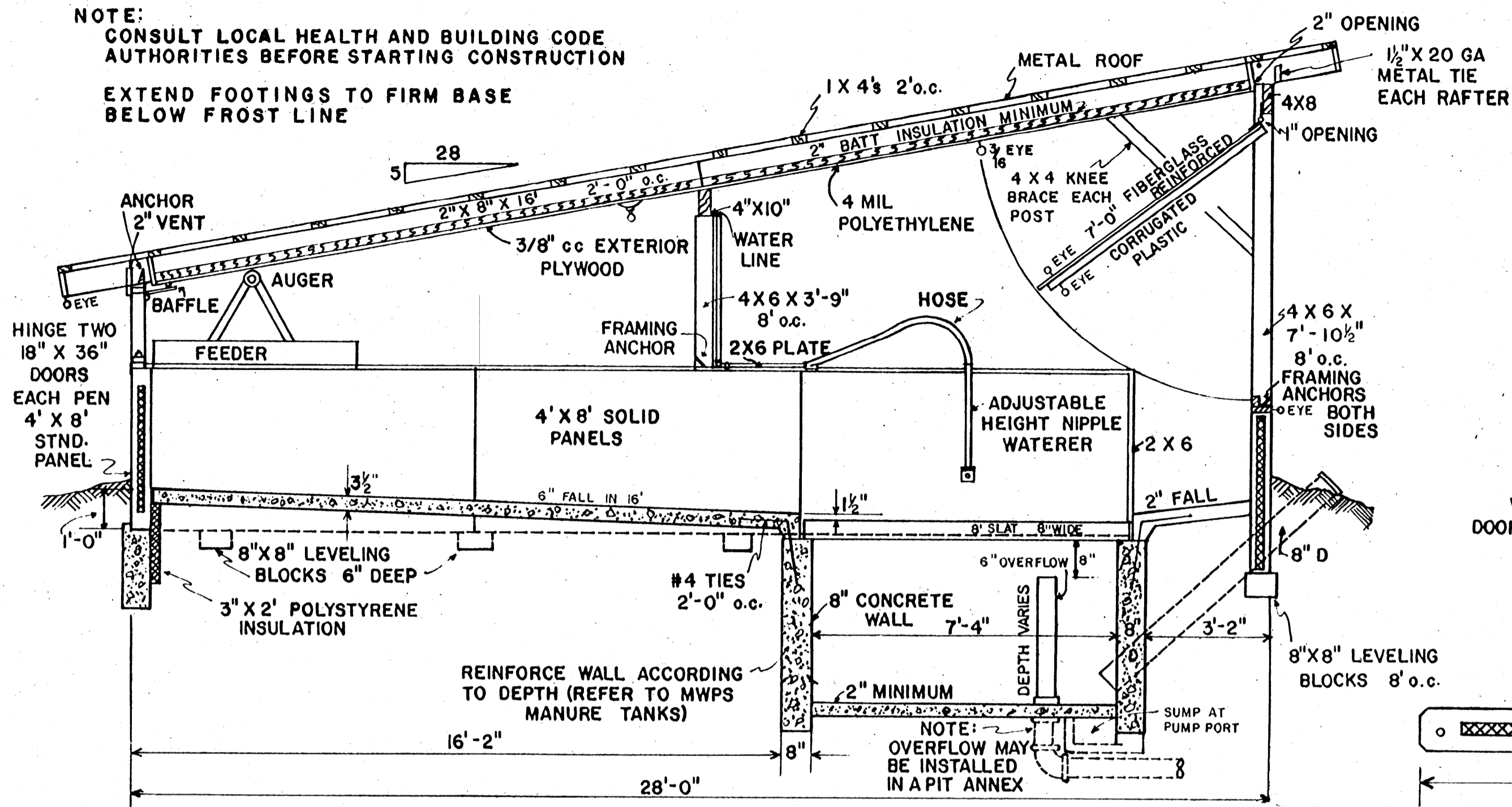
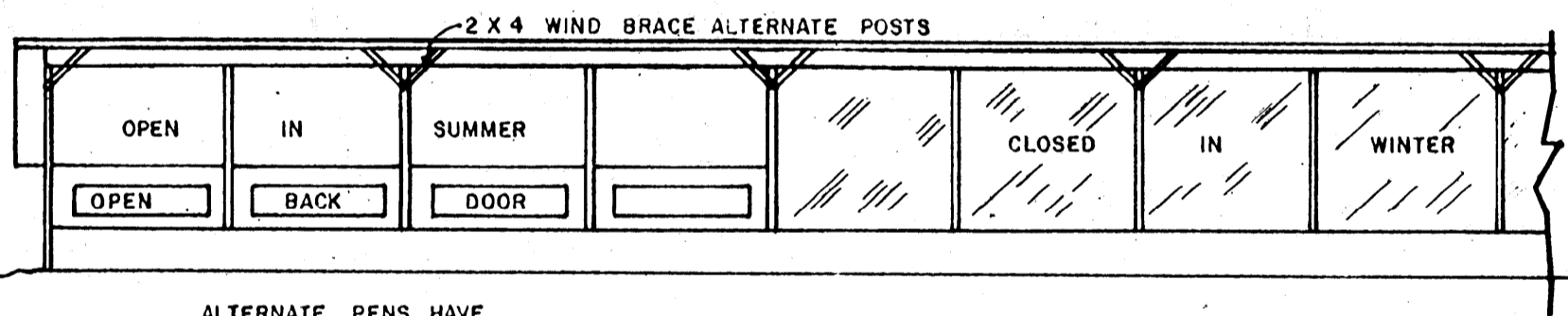


**NOTE:**  
 CONSULT LOCAL HEALTH AND BUILDING CODE  
 AUTHORITIES BEFORE STARTING CONSTRUCTION  
 EXTEND FOOTINGS TO FIRM BASE  
 BELOW FROST LINE

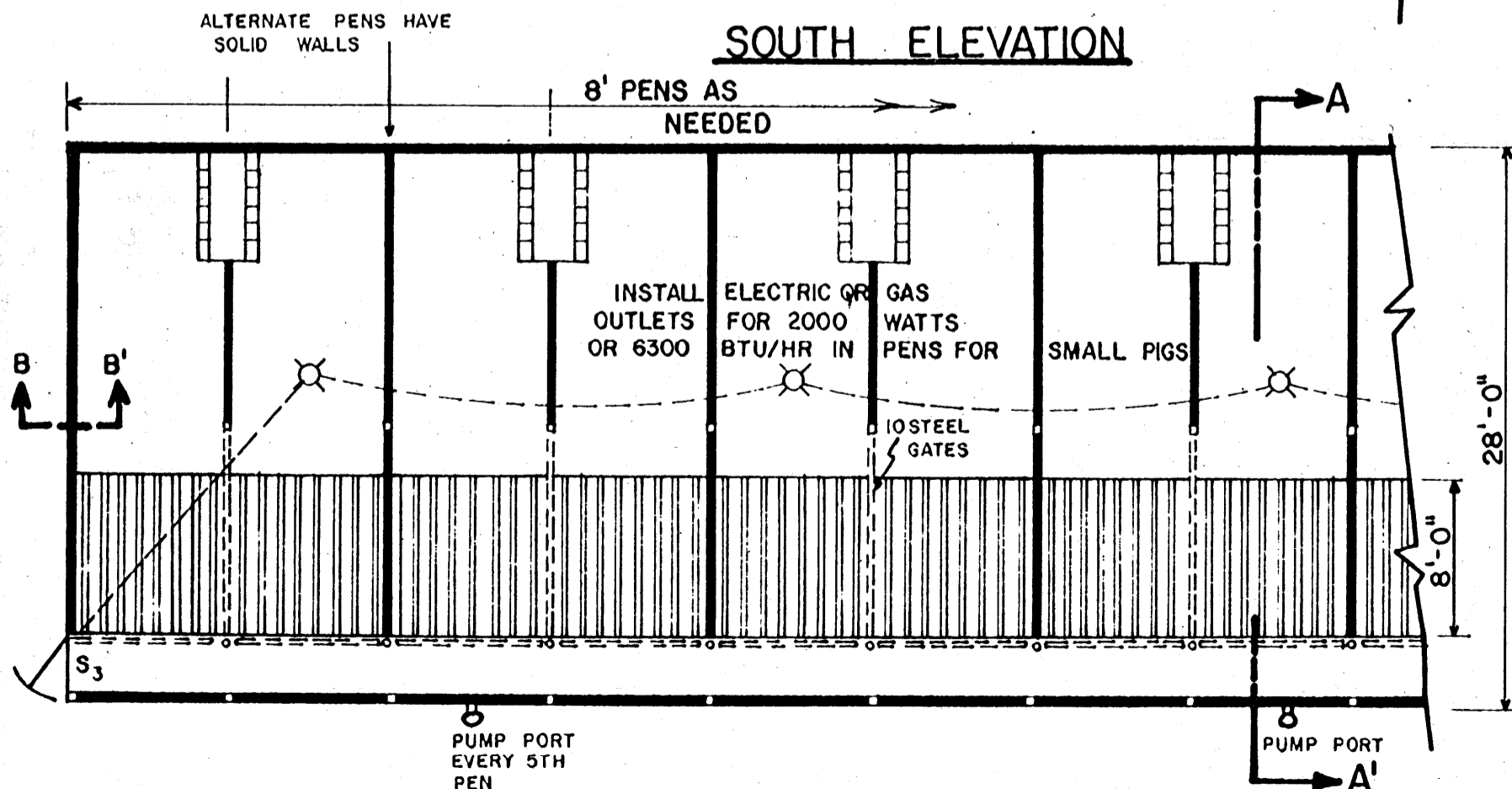


FOGGERS MAY BE INSTALLED OVER SLATS  
 1-1/2 GPH 90° NOZZLE PER PEN

**SECTION AA'**

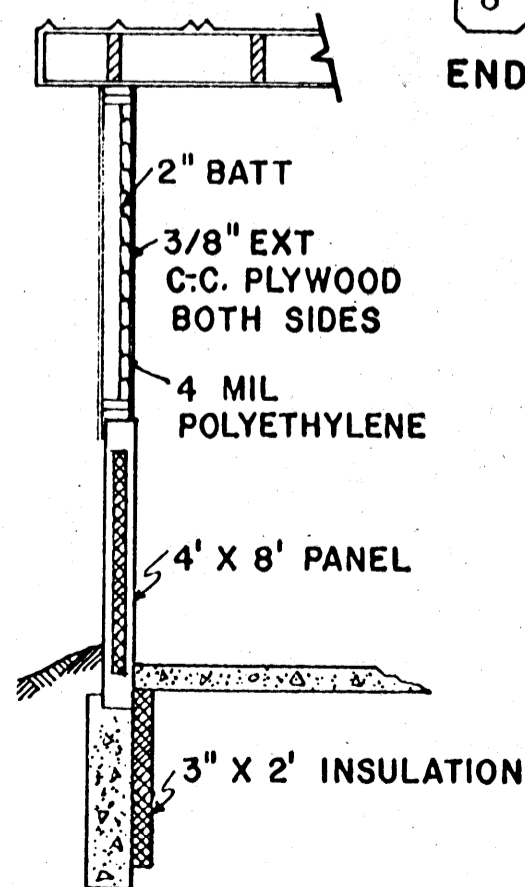


**SOUTH ELEVATION**

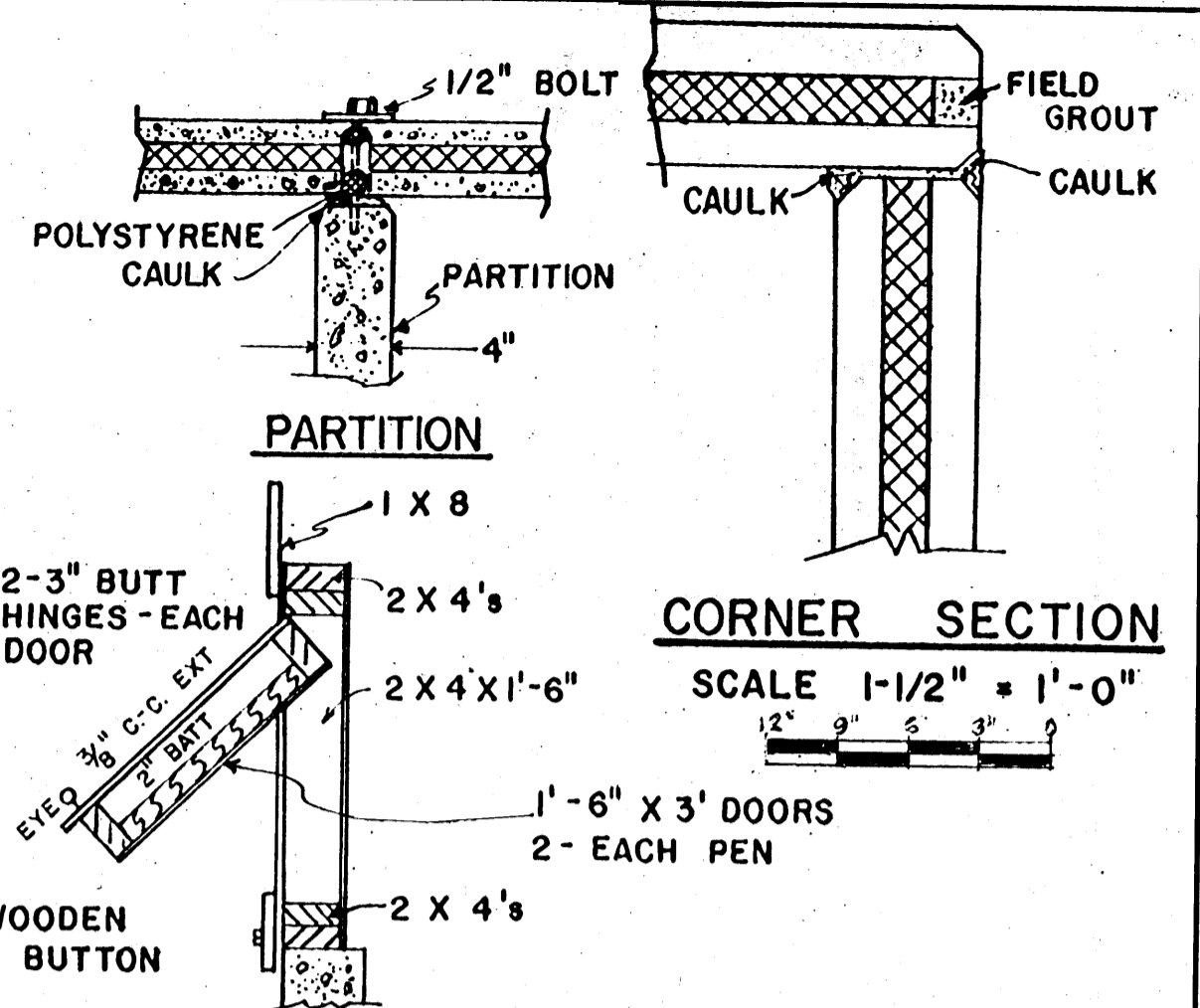


**PLAN**

SCALE 1/8" = 1'-0"



**SECTION BB'**

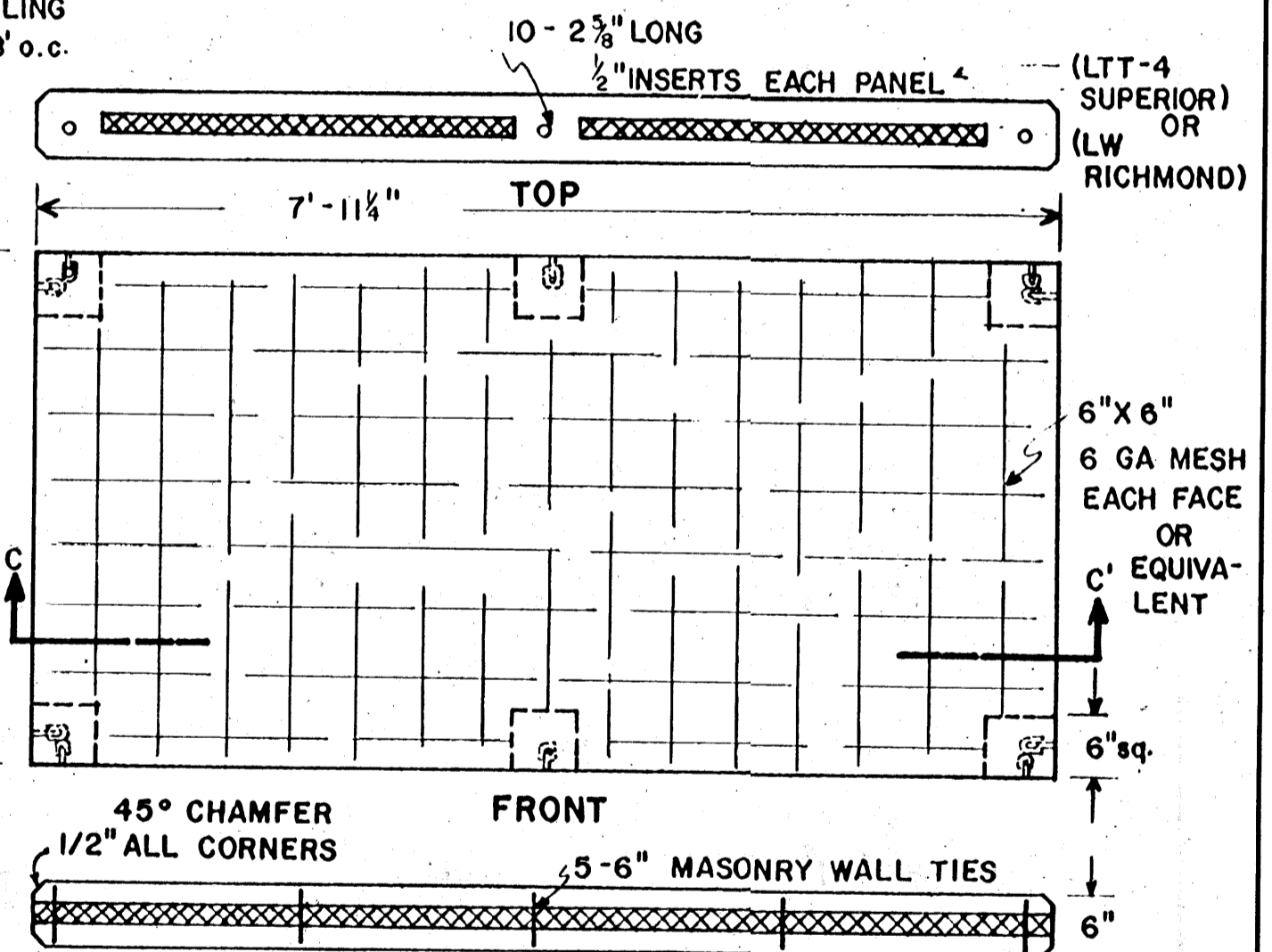


**PARTITION**

**CORNER SECTION**

SCALE 1-1/2" = 1'-0"

**BACK DOOR**  
 SCALE 1" = 1'-0"



**STANDARD PANEL SECTION CC'**

SCALE 3/4" = 1'-0"

PARTITION PANELS REINFORCED LIKE STANDARD BUT CONTAIN NO INSULATION  
 SOLID PARTITION PANELS 4" THICK

SCALE: 3/8" = 1'-0" UNLESS OTHERWISE NOTED.

BASED ON: UNIV. OF NEBR.  
 PLAN NO. 7046

COOPERATIVE EXTENSION WORK IN  
 AGRICULTURE AND HOME ECONOMICS  
 STATE OF MISSISSIPPI  
 MISSISSIPPI STATE UNIVERSITY  
 AND  
 UNITED STATES DEPARTMENT OF AGRICULTURE COOPERATING

**SWINE FINISHING BUILDING**

NEBR. '77 6274 SHEET 1 OF 1