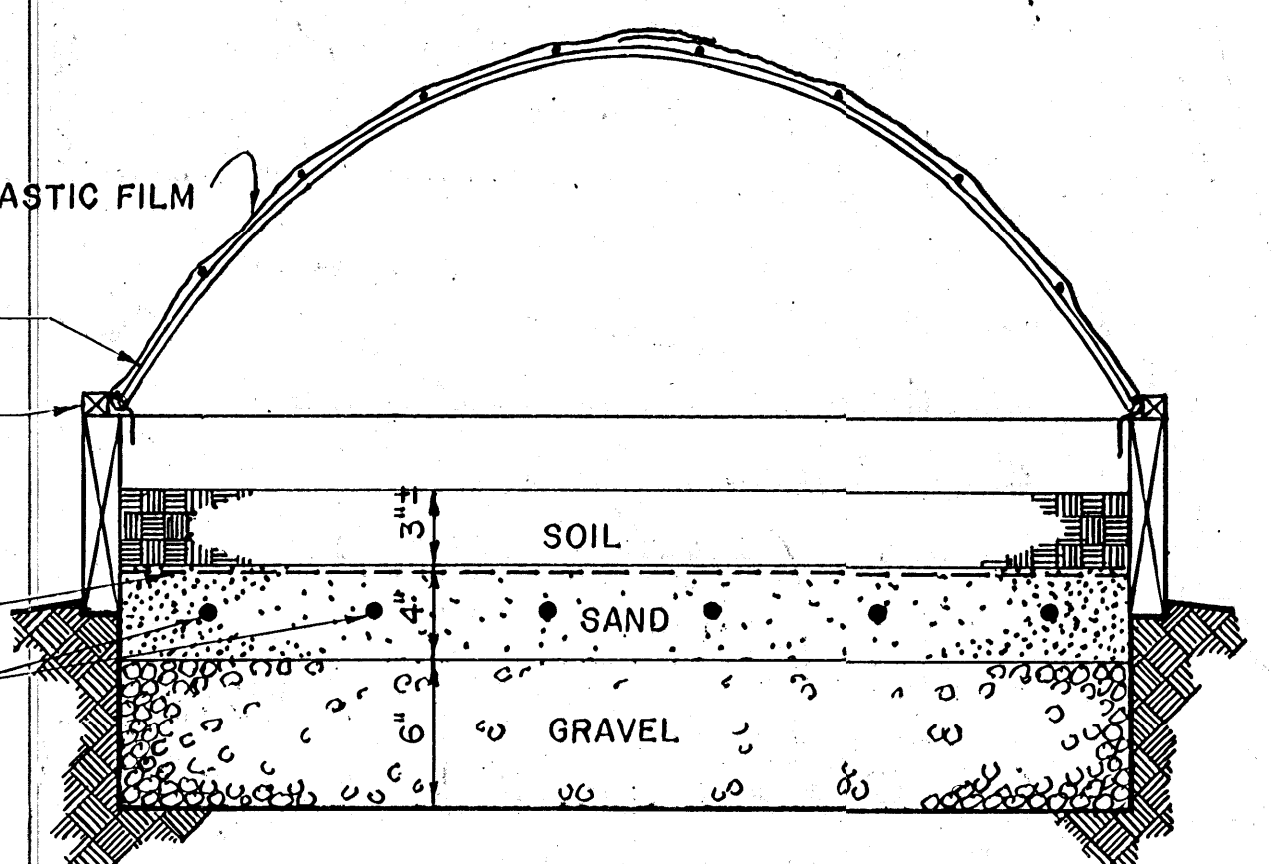


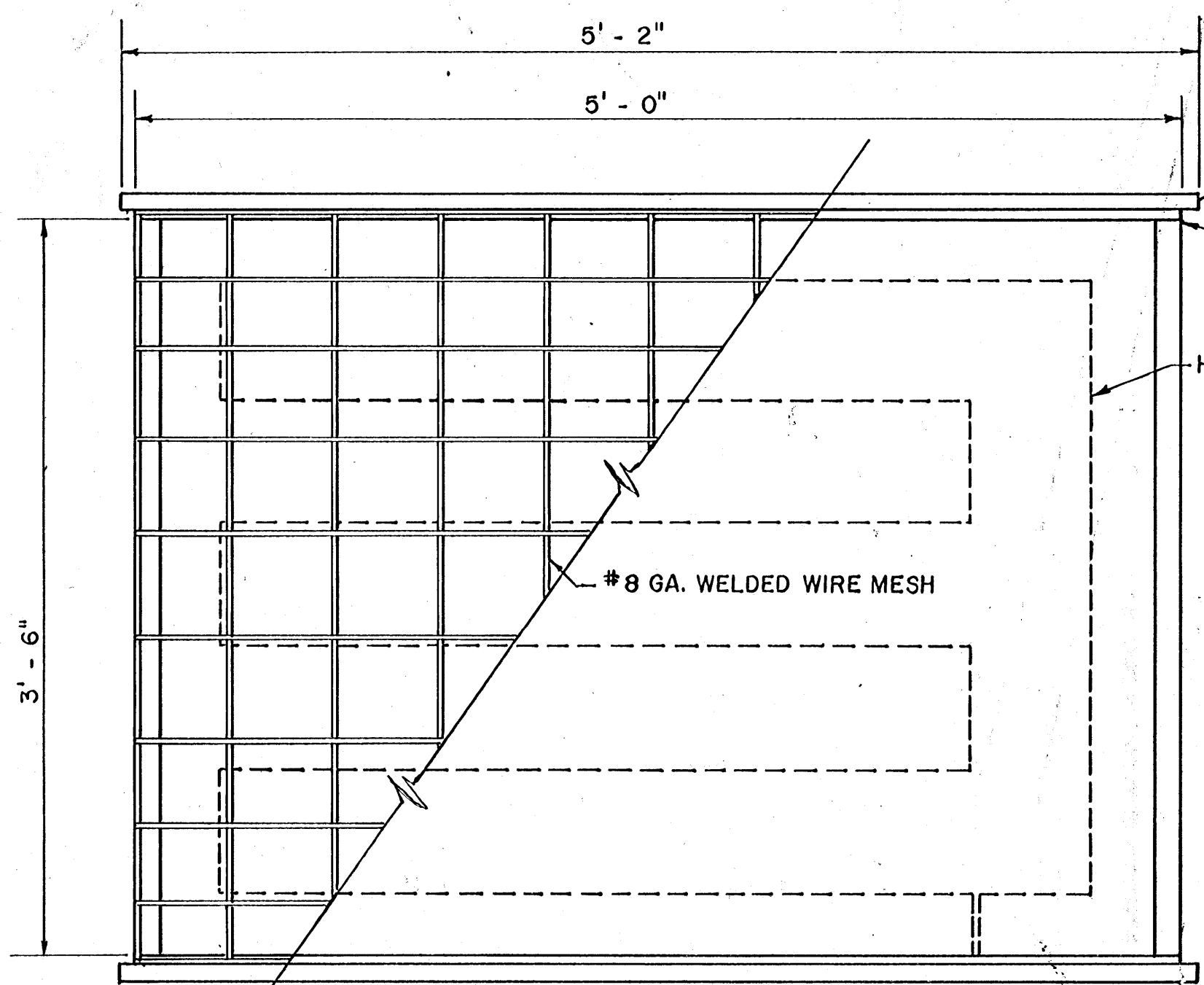
**SIDE VIEW**  
CUT AWAY



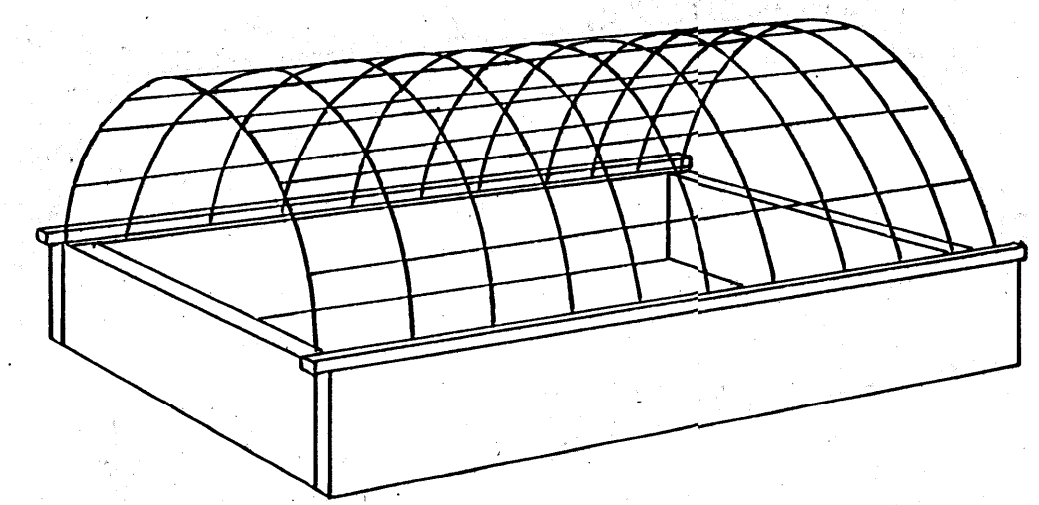
**END VIEW**  
SECTION

NOTE: SEPARATION OF HEATING CABLES IS VARIABLE TO AMOUNT OF HEAT NEEDED PER SQ. FT. ACCORDING TO GEOGRAPHIC LOCATION. REFER TO LEAFLET NO. 445 U.S.D.A.

ALL WOOD SHOULD BE TREATED WITH PRESERVATIVE AFTER CUTTING AND BEFORE ASSEMBLY.  
METAL PARTS AND FASTENINGS TO BE GALVANIZED OR OTHERWISE RESISTANT TO CORROSION.  
WOOD PARTS MAY BE FASTENED WITH SCREWS OR WITH NAILS.  
PLASTIC MAY BE FASTENED BY CLOTHES PINS OR BY PLASTIC WEBBING.



**TOP VIEW**  
CUT AWAY



**PERSPECTIVE VIEW**  
NOT TO SCALE

**MATERIAL LIST**

- 2 PCS. 2"x 8" - 5' LONG FOR SIDES
- 2 PCS. 2"x 8" - 3'-6" LONG FOR ENDS
- 2 PCS. 1"x 1" WIRE STOP - 5'-2" LONG FOR SIDES
- 1 PC. NO. 8 GAUGE 6'x6" WELDED WIRE, 5' LONG 4'-6" WIDE FOR TOP OF WOOD FRAME TO SUPPORT PLASTIC FILM.
- 3 PCS. PLASTIC WEBBING 2" WIDE - 5' LONG
- 2 PCS. PLASTIC FILM, 4 MIL, CLEAR 3' WIDE 7' LONG.
- 1 360-WATT SOIL HEATING CABLE, THERMOSTATICALLY CONTROLLED TO SHUT OFF AT 70°F.
- 1 PC. WHITE PLASTIC FILM, 4 MIL, 5'x8' FOR COVERING FRAME DURING WINTER.
- 2 PCS. CHEESECLOTH, 3'x7'
- 4 IN. SAND - 2" ABOVE, 2" BELOW HEATING CABLE
- 1 PC. 1/2" HARDWARE CLOTH, 5'x 3 1/2'

SCALE: 1 1/2" = 1'-0" UNLESS OTHERWISE NOTED

COOPERATIVE EXTENSION WORK IN AGRICULTURE AND HOME ECONOMICS		
STATE OF MISSISSIPPI		
MISSISSIPPI STATE UNIVERSITY		
AND UNITED STATES DEPARTMENT OF AGRICULTURE COOPERATING		
MINI-HOTBED AND PROPAGATING FRAME		
U.S.D.A. '69	6080	SHEET 1 OF 1

DESIGNED IN COOPERATION WITH:  
CROPS RESEARCH DIVISION