

POST PEELER PARTS LIST			
NO.	ITEM	SIZE	QUA.
1	3 PT. HITCH STUB	2"x1/4"x3" FLAT BAR	2
2	LOWER HITCH STUB	7/16"x3 1/2"	2
3	3 PT. HITCH FRAME	2"x2"x3/16"x60" ANGLE IRON	2
4	3 PT. HITCH CROSS PC.	2"x2"x3/16"x17 1/2" A. I.	1
5	3 PT. HITCH CROSS PC.	2"x2"x3/16"x16 3/4" A. I.	1
6	LOWER MAIN FRAME	2"x2"x3/16"x60" A. I.	2
7	UPPER MAIN FRAME	2"x2"x3/16"x60" A. I.	2
8	CROSS PIECES	2"x2"x3/16"x16 3/4" A. I.	1
9	CROSS PIECES	2"x2"x3/16"x16 1/2" A. I.	3
10	BEARING MOUNT	2"x2"x3/16"x17 1/2" A. I.	1
11	BEARING MOUNT	2"x2"x3/16"x16 1/2" A. I.	1
12	FRAME SUPPORT	2"x2"x3/16"x18" A. I.	1
13	FRAME SUPPORT	2"x2"x3/16"x20" A. I.	1
14	FRAME SUPPORT	2"x2"x3/16"x17 1/2" A. I.	1
15	FRAME SUPPORT	2"x2"x3/16"x19 1/2" A. I.	1
16	DOWN BRACE	2"x2"x1/4"x30" FLAT IRON	2
17	SAFETY ROD	1/2" DIAM. x 17" STEEL ROD	17
	EXPANDED METAL (STYLE 3/4" - 9-11 OR SIMILAR STYLE) CAN BE USED INSTEAD OF 1/2" DIA. RODS TO COVER TOP OF FRAME. TACK MESH TO ANGLE FRAME BY WELDING.		
18	SHAFT COLLAR	1 1/4"	2
19	PILLOW BLOCK BEARING	1 1/4"	2
20	COLD ROLL STEEL SHAFT	1 1/4" DIAM. x 24"	1
21	BOLTS W/NUTS & LOCK WSH.	7/16" x 1 1/2" SAE THREADS	4
22	COM. OR PROOF COIL CHAIN:		
	1 LINK - 3/8"-1 15/64"	(INSIDE LGTH.) x 5/8" (INSIDE WIDTH)	
	9 CHAINS @ 9 LINKS EACH	(NOT SHOWN) APPROX. 10 FT.	
23	POST SUPPORT ROD	5/8" x 17 1/2"	1
24	PEELER BOX TOP	18"x18"x12 GA. SHEET METAL	1
25	PEELER BOX SIDE	18"x20"x12 GA. SHEET METAL	1
26	PEELER BOX SIDE	18"x18"x12 GA. SHEET METAL	1

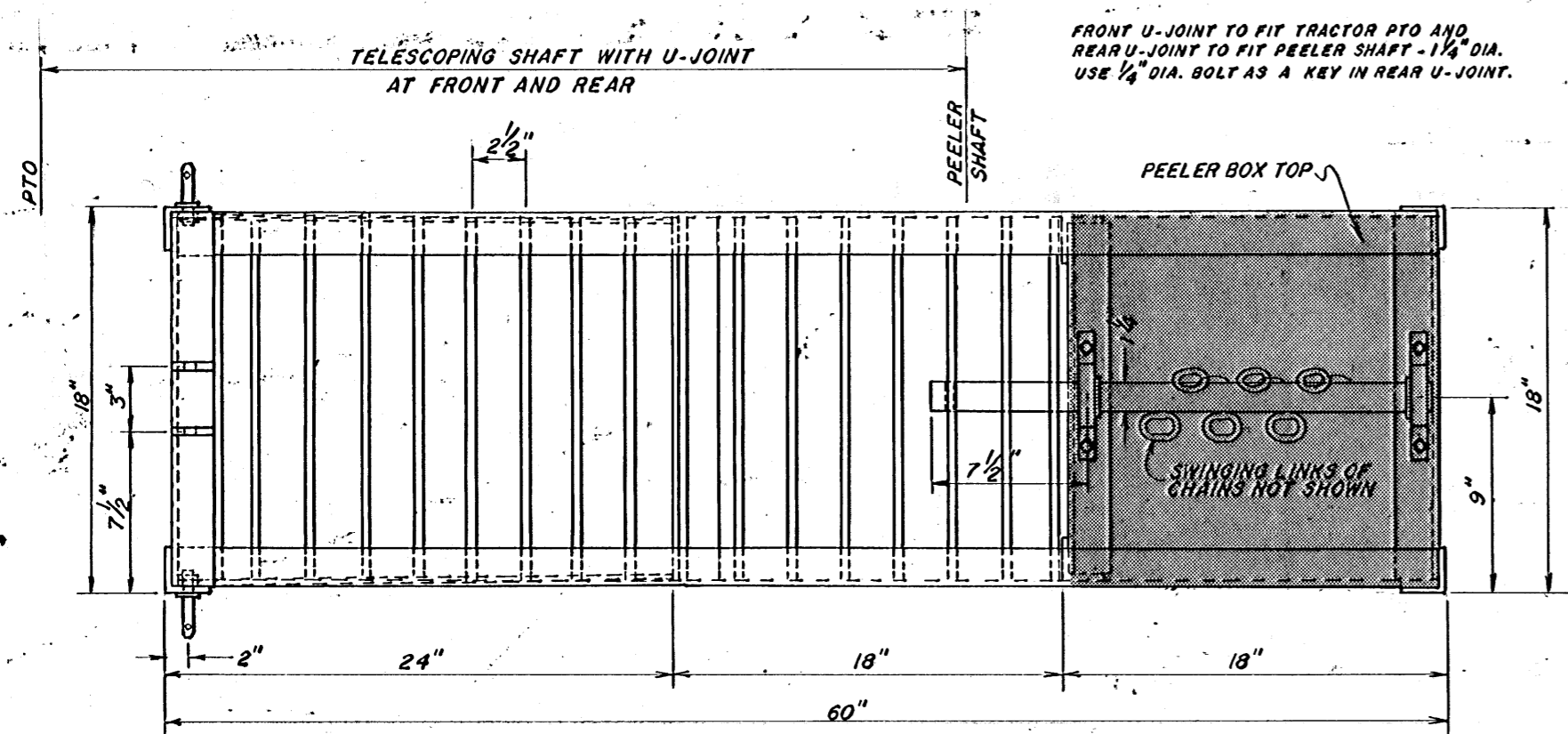
NOTE:
USE A COAT OF METAL PRIMER & ONE COAT OF METAL PAINT AS DESIRED.

22 CHAINS ARE NOT SHOWN. SEE SHEET TWO FOR PROPER PLACEMENT OF CHAINS ON SHAFT NO. 20.

POST PEELER

PARTS LIST & POST PEELER		PL. NO. 5961-B
POST PEELER		
	DESIGN BY <i>H.A.M.H. & L. MILLER</i>	SHEET
	DRAWN BY <i>Jerry Bingham</i>	1
	DATE <i>June, 1981</i>	OF 2

ADAPTED FROM DESIGN BY HAL, MILTON HARBOUR AND LARRY R. HURT

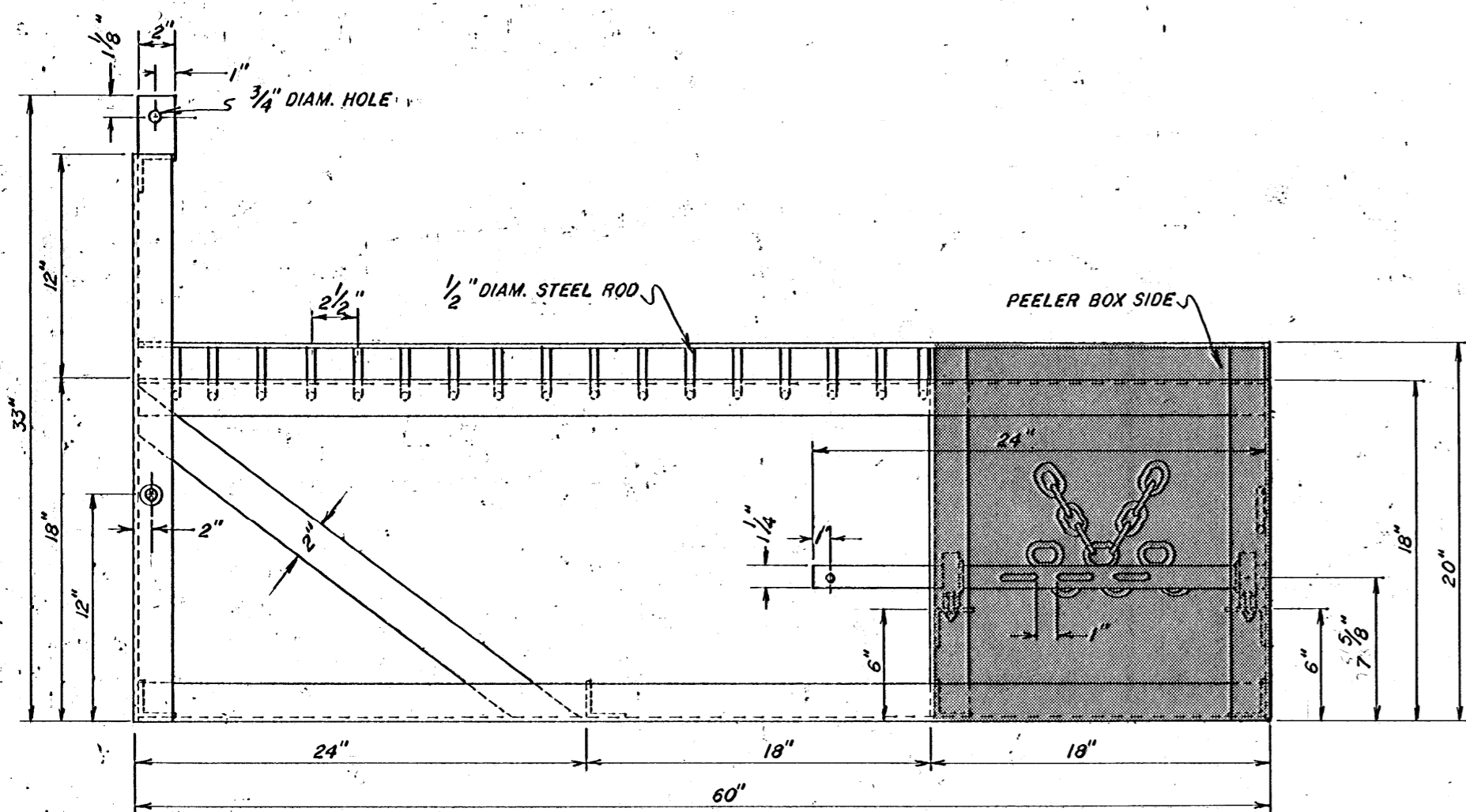


TOP VIEW

Scale: 1/2" = 1'-0"

NOTE:

THE LENGTH OF THE TELESCOPING SHAFT SHOULD HAVE A MINIMUM OF TWELVE INCHES, PLUS OR MINUS ADJUSTMENT FROM THE OPERATIONAL POSITION. THE SHAFT LENGTH IN THE DOWN POSITION DURING OPERATION WILL VARY. OVERALL LENGTH OF SHAFT APPROX. 64 INCHES.



FRONT VIEW

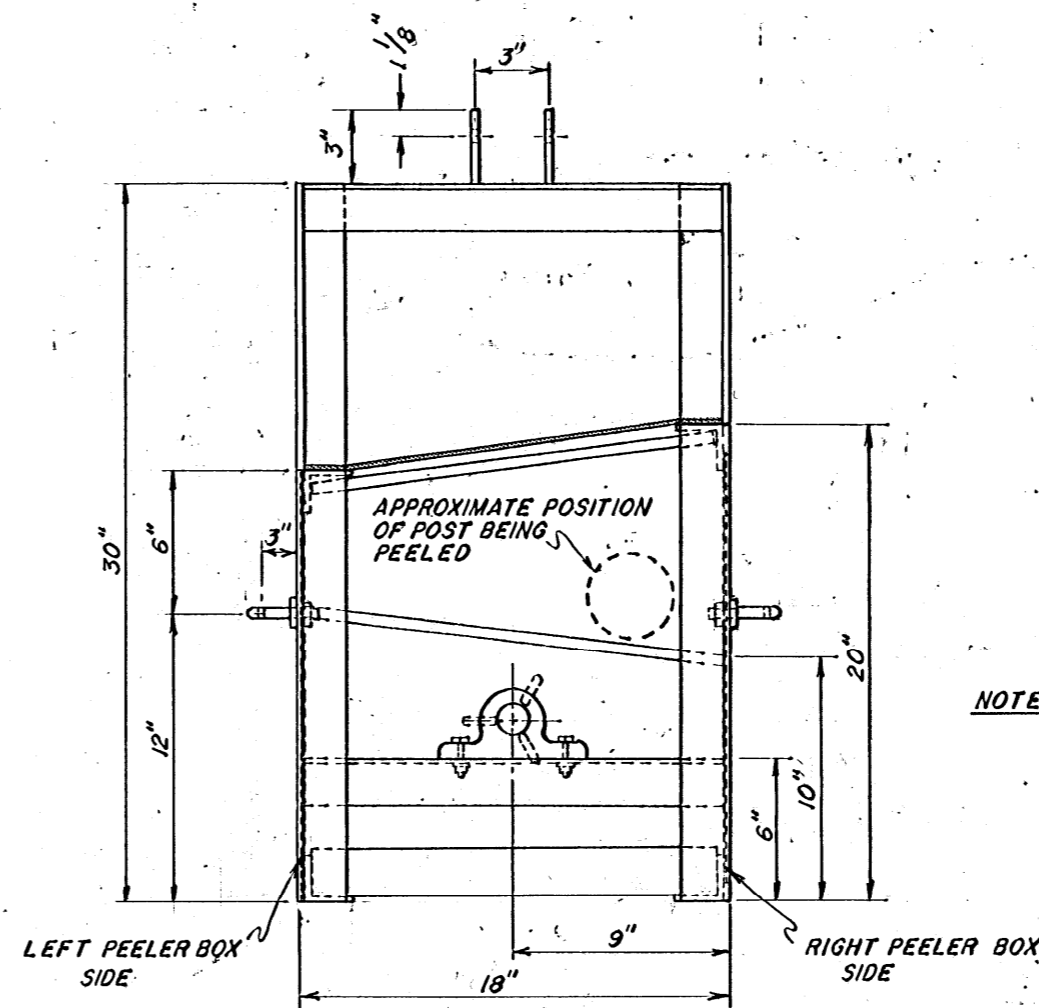
Scale: 1/2" = 1'-0"

OPERATION

When using this implement take all safety precautions. This implement uses free and rotating chains. Keep bystander away from peeler box and away from peeler a safe distance. Wear eye protection in case of flying bark or wood particles. Don't operate at over speeds. This is dangerous and will tire operator quickly. Don't take chances, stop equipment and shut tractor off before making repairs or inspecting implement.

Peeler operates between 300 to 400 RPM. The post is fed into the rear and down by the rotating chains. The post will come out to the side, (see sideview - sheet 2) but is not intended to go all the way through in one operation. Peel one half of the post then change ends and peel remaining part. This procedure permits a one man operation and lets the operator have control of the post at all times. When the post is peeled it can be stacked or reloaded.

Be mindful of growing timber - DO NOT leave bark piled up around trees. This may cause a weakening of the trees and a subsequent invasion by insects. (Bark is an excellent mulch and neighbors could move a lot of it if given permission and know the location).



SIDE VIEW

Scale: 1/2" = 1'-0"

NOTE:

SWINGING LINKS OF CHAINS NOT SHOWN.

POST PEELER ELEVATIONS

PL. NO. 5961-B

POST PEELER



DESIGN BY H. A. M. H. L. MILLER

SHEET

DRAWN BY Jerry Bingham

2

DATE June, 1981

OF 2