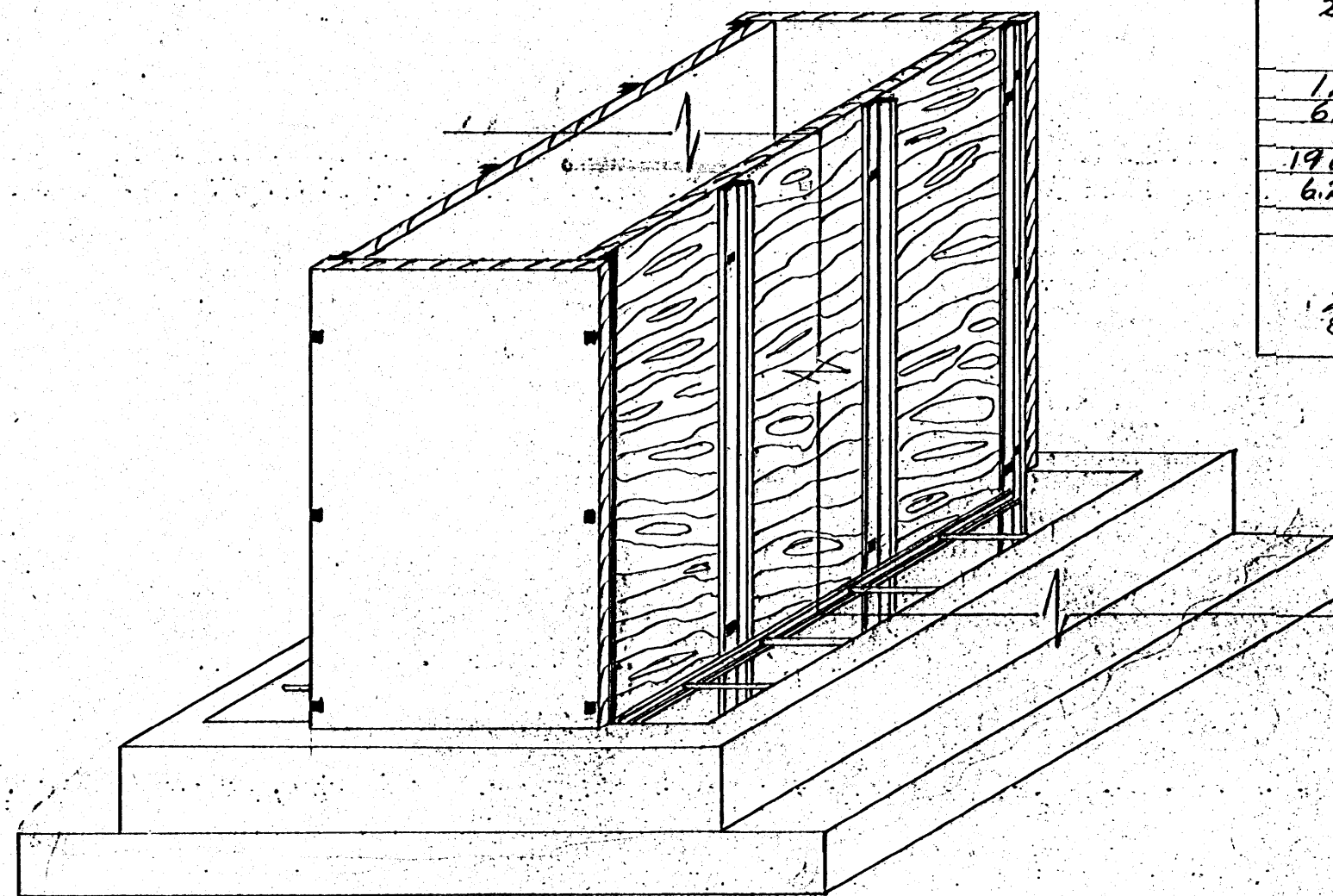


PLAN  
SCALE 3/4" = 1'0"



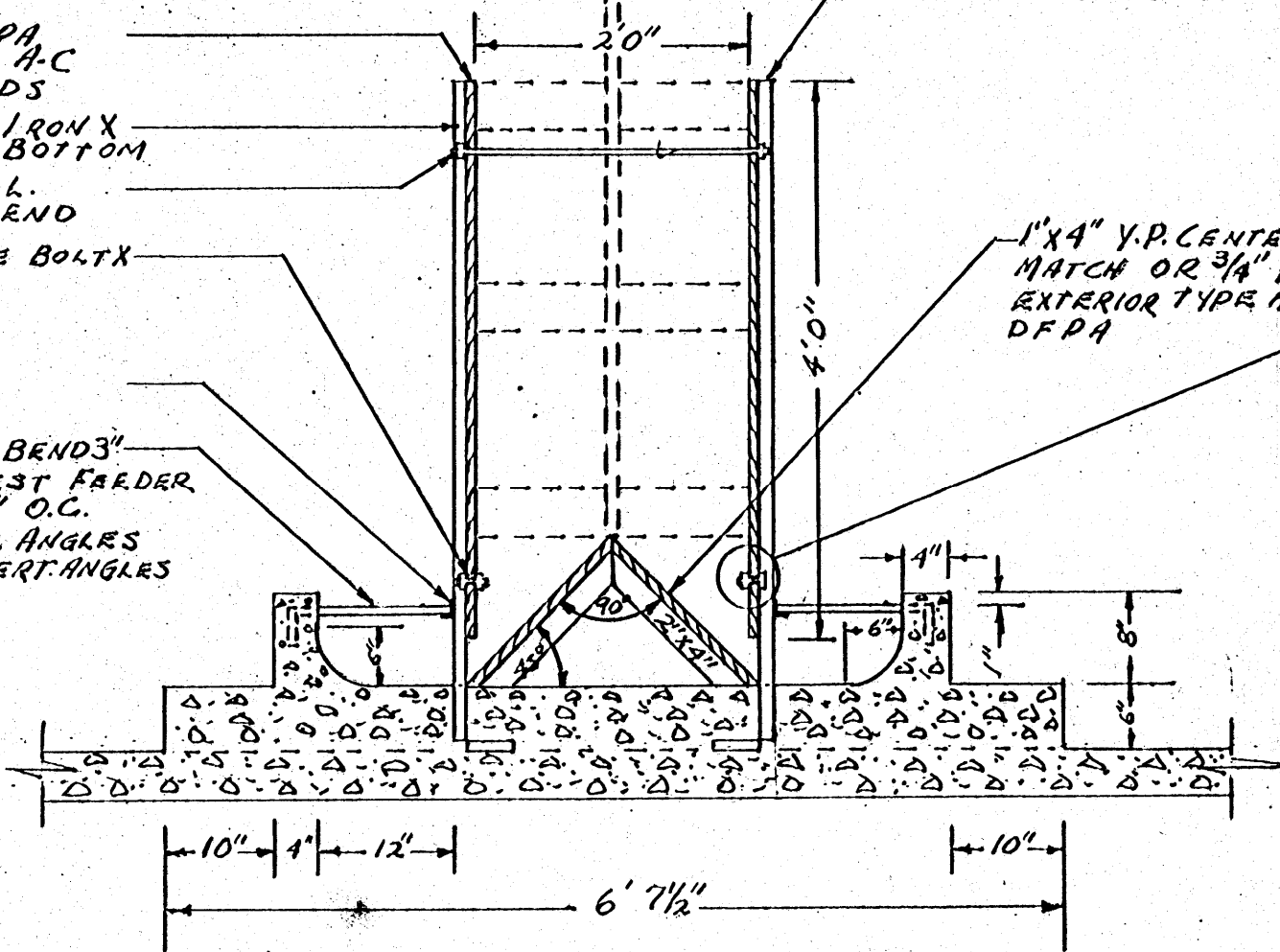
MATERIALS LIST	
QUANTITY	ITEM
10	HARDWARE 1/2" DIA X 15" CONSTRUCTION STEEL RODS BEND 90° 3"
1	3/16" DIA X 28" L SMOOTH ROD THREAD 2" EACH END
30	3/16" DIA X 1 1/2" L. MACHINE BOLTS
32	3/8" DIA WASHERS
10	1" X 1" X 3/16" - 5'0" L. ANGLE IRON BEND 3" AT BOTTOM
2	1" X 1" X 3/16" - 5'0" L. WELD TO UPRIGHT ANGLE
1 LB	6d COMMON NAILS
LUMBER	
2 PC	4' X 8" - 3/4" PLYBOARD TYPE A.C. SMOOTH SIDE 1 IN. EXTERIOR D.F.A.A. GRADE
1 PC	2" X 4" X 10' NO. 2 SPIB.S.A.S
6 PC	1" X 4" X 10' NO. 2 SPIB.C.M. CONCRETE
19 CUFT	PLATFORM
6.2 CUFT	BASE SIDE WALLS
CAPACITY	
1600 LBS AS DRAWN @ 40 LBS PER CUFT.	
2' EXTENDED HEIGHT GIVES 800 LB ADDITIONAL CAPACITY	

IF 2 RATIONS ARE TO BE  
FED IN FEEDER INSERT  
4' X 5' 3/4" PLYBOARD IN  
POSITION SHOWN  
BLOCK TOP AND BOTTOM  
AND MIDWAY BETWEEN  
BLOCK, EACH END AND  
MIDWAY BETWEEN  
BOTH WITH 2" X 4" WOOD ON  
EDGE - POSITION SIDES AND  
NAIL IN PLACE

3/4" PLYBOARD D.F.P.A.  
EXTERIOR TYPE A-C  
SIDES AND ENDS  
1" X 1" X 3/16" ANGLE IRON X  
5' L. BENDS 3" AT BOTTOM  
3/16" DIA. ROD X 28" L.  
THREAD 2" EACH END  
5/16" DIA. MACHINE BOLT X  
1 1/2" L.

1" X 1" X 3/16" X 5' L.

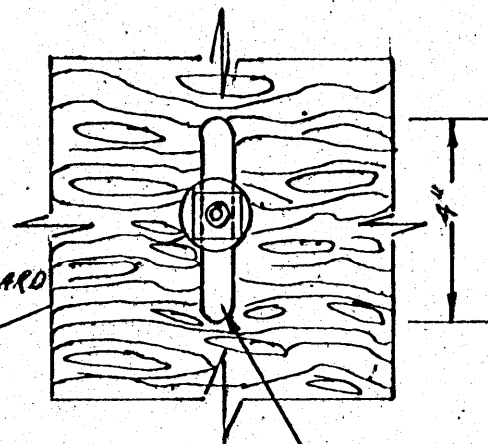
1/2" DIA. ROD 1'5" L. BENDS 3"  
WELD END NEAREST FEEDER  
TO ANGLE IRON 10" O.C.  
WELD HORIZONTAL ANGLES  
EACH SIDE TO VERT. ANGLES  
SAME SIDE



CROSS SECTION  
SCALE 3/4" = 1'0"

IF FEEDER IS BUILT WITHOUT  
PLATFORM SINK ANGLE IRONS  
IN FLOOR AS IT IS BEING  
FORMED

1" X 4" V.P. CENTER  
MATCH OR 3/4" PLYBOARD  
EXTERIOR TYPE A-C  
D.F.P.A.



MAKE SLOT FOR SIDE BOLTS AND ROD 3/8" W X 4" L.  
IN PLYBOARD. FEED OPENING AT  
BOTTOM ADJUSTABLE FROM 2" TO 6"  
4" SHOWN ON CROSS SECTION

SWINE FEEDER FOR FINISHING BARN  
Cooperative Extension Service  
STATE OF MISSISSIPPI AND MISSISSIPPI UNIV  
and  
U.S. DEPT. OF AGRICULTURE COOPERATING  
DESIGNED and DRAWN BY: Lee MILLER  
EXTENSION AGRIC. ENGINEER  
APPROVED BY: W.L. Richmond EXTENSION  
SWINE SPECIALIST

NO. 5956-A

NOV. 1964 NO. 511 SHEET 1 OF 1