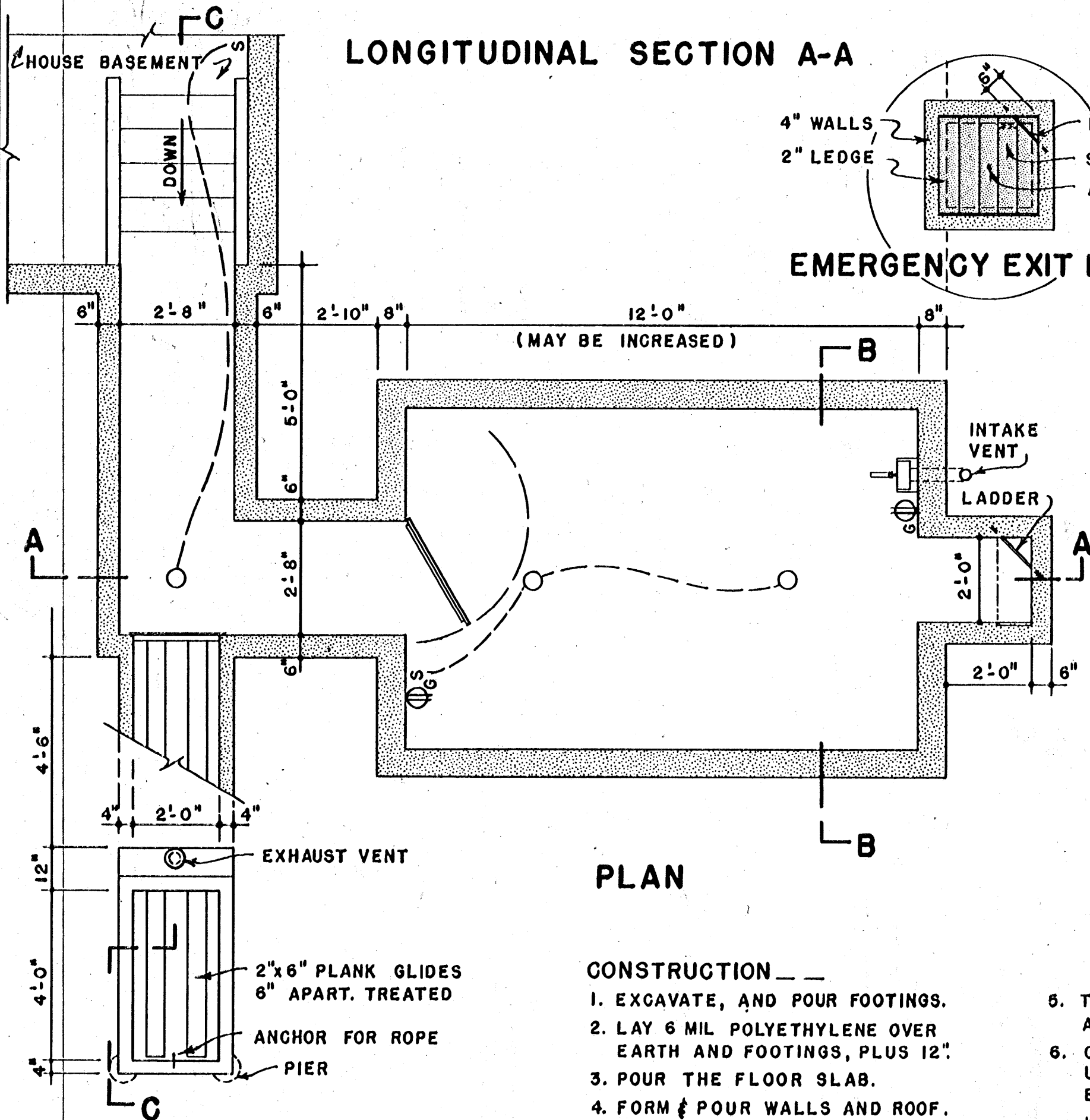


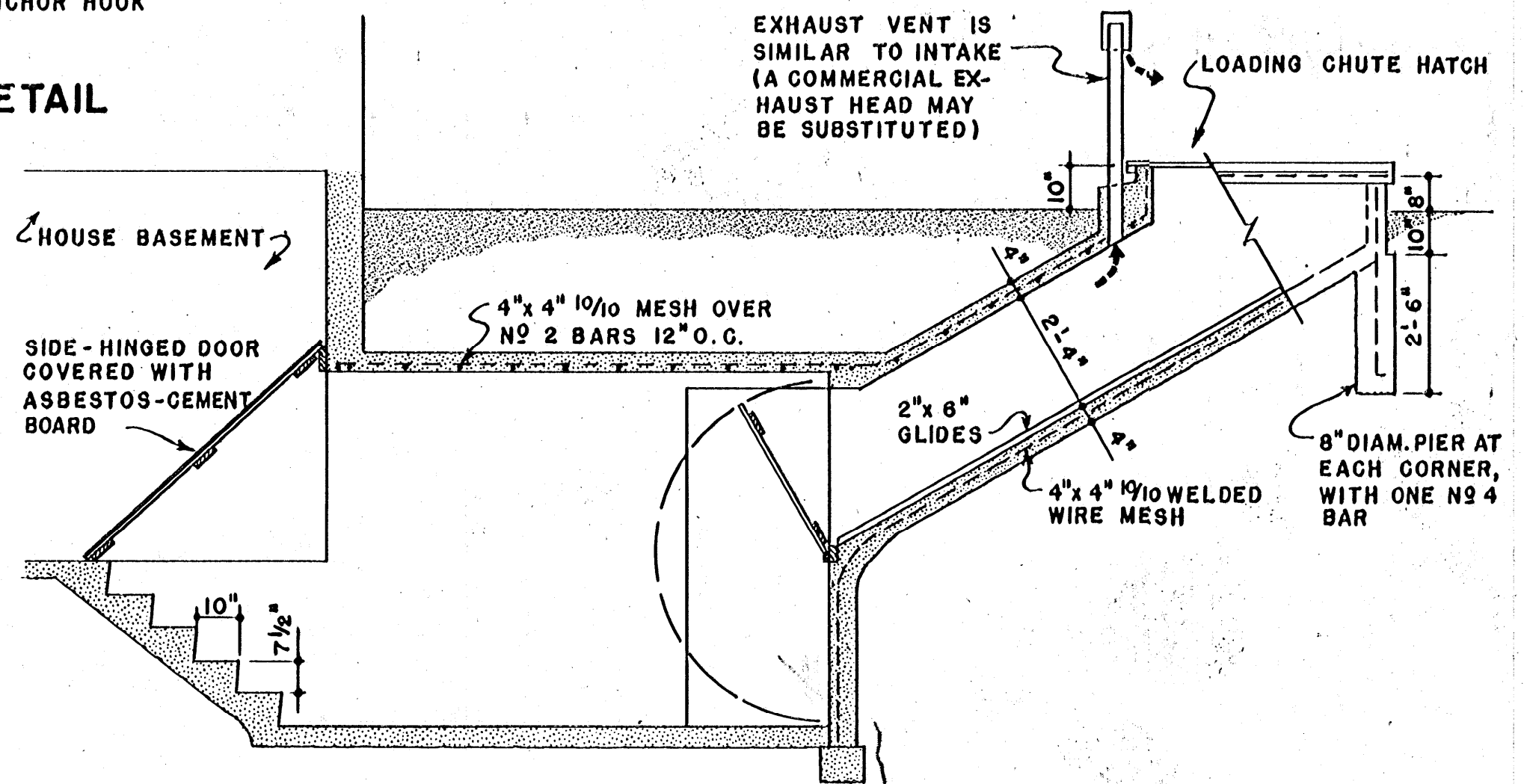
LONGITUDINAL SECTION A-A

CROSS SECTION B-B



EMERGENCY EXIT DETAIL

PLAN



SECTION C-C

CONSTRUCTION —

1. EXCAVATE, AND POUR FOOTINGS.
2. LAY 6 MIL POLYETHYLENE OVER EARTH AND FOOTINGS, PLUS 12".
3. POUR THE FLOOR SLAB.
4. FORM & POUR WALLS AND ROOF.
5. TURN POLYETHYLENE UP AND CEMENT TO WALLS.
6. COVER ENTIRE STRUCTURE UP TO GRADE WITH POLYETHYLENE, USING LAPPED JOINTS CEMENTED. TO BE WATERPROOF.

COOPERATIVE EXTENSION WORK IN
 AGRICULTURE AND HOME ECONOMICS
 STATE OF MISSISSIPPI
 MISSISSIPPI STATE UNIVERSITY
 AND
 UNITED STATES DEPARTMENT OF AGRICULTURE COOPERATING

**FARM FALLOUT SHELTER
 AND STORAGE**

USDA '61 EX. 5934 SHEET 1 OF 1