

Perilla Mint

(*Perilla frutescens*)

Perilla mint is an erect, herbaceous annual weed originally from eastern Asia. Also known as beefsteak plant, common mint, or Chinese basil, this plant has a history of use in the culinary, medicinal, and ornamental markets. In Mississippi, perilla mint has escaped cultivation and frequently occurs in natural areas, including pastures. When populations occur on grazing lands or fields harvested for hay, perilla mint poses serious health risks to livestock. It is considered a noxious weed throughout much of the eastern United States.

Description

Vegetative Growth

A member of the Lamiaceae, or mint, family, perilla mint usually reaches an average height of 2 feet at maturity. However, plants may reach up to 5–6 feet, especially in shaded, fertile areas. Leaves are coarsely serrated and are opposite each other on a square stem (Figure 1). Upper leaf margins and undersides of leaves are frequently purple (Figure 2). Like other plants in the mint family, leaves are highly aromatic when crushed. In Mississippi, seedlings may be seen as early as mid-May or when soil temperatures are between 68 and 77°F.

Flowering

A self-pollinating species, perilla mint typically begins flowering in late July to August, producing flower spikes up to 6 inches long (Figure 3). Each spike contains many small, white to purple flowers. Plants are prolific seeders, having the potential to produce 1,000–1,500 seeds per plant. Seed viability often remains high, with germination studies indicating greater than 60 percent after more than 4 years of room-temperature storage.

Dispersal

Seed is spread by disturbance, birds, or surface water movement. Late-season hay harvests tend to retain mature seed, which are likely transported across farms. Seed readily germinates in highly disturbed conditions. Length of seed viability under normal field conditions is unknown.



Figure 1

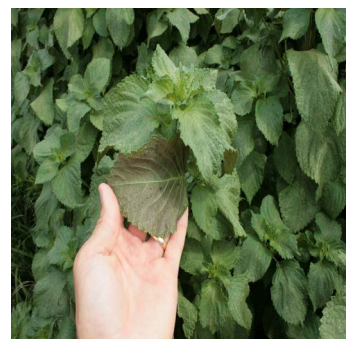


Figure 2

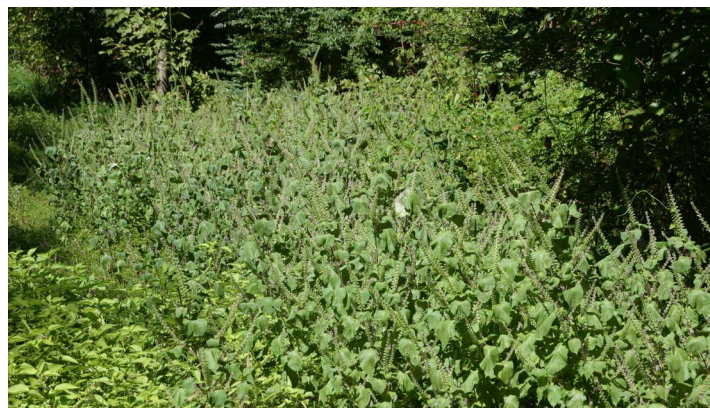


Figure 3

Habitat

Perilla mint is highly adaptable, but populations are most often dense and found in semi-shaded wooded understories, along streamside areas, and in damp swales (Figure 4). Disturbed areas of fertile soil around hay rings (Figure 5), feedlots, and barns tend to encourage healthy populations. In pastures, the invasive perilla competes with beneficial forage species, especially during intervals of limited rainfall.

Threat

Several volatile compounds, like perilla ketones, exist in perilla mint and cause atypical interstitial pneumonia (AIP) in cattle and other domestic animals. Fluid accumulates in the lungs, resulting in lower oxygen levels and shortness of breath. Plants are more toxic during flowering and fruiting, which coincides with periods of lower forage quantity and quality, excessive temperatures, and stress caused by insects. As a result, livestock congregate in shaded areas that may be infested with perilla mint (Figure 6). This means exposed livestock are at a greater risk of plant consumption when its toxicity is greatest.

Control Methods

Several herbicides are highly effective for controlling perilla mint. Some preemergence options include picloram, aminopyralid, dicamba, and imazapic (Table 1). These treatments should be applied before seedling emergence and just before rain to incorporate the chemical into the soil. Postemergence options include picloram, 2,4-D, glyphosate, and dicamba (Table 2). These may be applied to emerged plants from seedling through the early flowering stage for effective control. If treating large populations, livestock should be removed from the treated area to reduce risk of ingestion, especially if desirable forage is limited.

Additional control methods include mowing or hand pulling. These physical control techniques are suggested before flowering in late summer to avoid seed production and new plants in the following years.



Figure 4.



Figure 5.



Figure 6.

Table 1. Suggested preemergence herbicide treatments and rates to be soil-applied broadcast before perilla mint seedling emergence.

Herbicide	Trade Name	Rate (amount product/A)
picloram + 2,4-D	Grazon P+D	32 fl oz
aminopyralid + 2,4-D	GrazonNext HL	19 fl oz
dicamba + 2,4-D	Weedmaster	32 fl oz
imazapic	Plateau	6 fl oz

Table 2. Suggested postemergence herbicide treatments and rates to be foliar-applied broadcast to perilla mint until early flower stage.

Herbicide	Trade Name	Rate (amount product/A)
picloram + 2,4-D	Grazon P+D	16 fl oz
aminopyralid + 2,4-D	GrazonNext HL	19 fl oz
glyphosate	RoundUp (41% a.i.)	24 fl oz
dicamba + 2,4-D	Weedmaster	16 fl oz
2,4-D	2,4-D Amine 4	32 fl oz

All treatments include 0.25 percent v/v non-ionic surfactant.

The information given here is for educational purposes only. References to commercial products, trade names, or suppliers are made with the understanding that no endorsement is implied and that no discrimination against other products or suppliers is intended.

Publication 3865 (POD-10-24)

By **John Byrd**, PhD, Extension/Research Professor, and David Russell, PhD, former Extension Associate, Plant and Soil Sciences.



Copyright 2024 by Mississippi State University. All rights reserved. This publication may be copied and distributed without alteration for nonprofit educational purposes provided that credit is given to the Mississippi State University Extension Service.

Produced by Agricultural Communications.

Mississippi State University is an equal opportunity institution. Discrimination in university employment, programs, or activities based on race, color, ethnicity, sex, pregnancy, religion, national origin, disability, age, sexual orientation, gender identity, genetic information, status as a U.S. veteran, or any other status protected by applicable law is prohibited.

Extension Service of Mississippi State University, cooperating with U.S. Department of Agriculture. Published in furtherance of Acts of Congress, May 8 and June 30, 1914. ANGUS L. CATCHOT JR., Director