

Cucurbit Downy Mildew

Downy mildew is a potentially devastating disease of cucurbit crops that can cause significant yield losses. This disease, sometimes referred to as cucurbit downy mildew, is known to infect more than 40 cucurbit species, including cantaloupe, cucumber, pumpkin, squash, and watermelon. In Mississippi, this disease has been more of a problem in the fall than in the spring.

Signs and Symptoms

Signs and symptoms of downy mildew typically occur only on leaves. Leaves of all ages may be affected. Symptoms appear between 3 and 12 days after infection and begin as slightly yellow to bright yellow lesions on the upper leaf surface. Lesions may remain yellow or may turn brown. In most cucurbits, lesions have irregular margins (**Figures 1, 2, and 3**); however, in cucumbers, lesions are angular (**Figure 4**). The lesions may expand to cover much of the leaf surface, eventually resulting in the death of the entire leaf. Under favorable environmental conditions, the pathogen may produce gray- to purple-colored structures on the lower surface of leaves (**Figures 5 and 6**) below the yellow lesions present on the upper surface of leaves.



Figure 1. Symptoms of downy mildew on cantaloupe. Photo: G. Holmes, Cal Poly–San Luis Obispo, Bugwood.org.



Figure 2. Symptoms of downy mildew on pumpkin. Photo: R. A. Melanson, MSU Extension, Bugwood.org.



Figure 3. Symptoms of downy mildew on watermelon. Photo: J. Brock, University of Georgia, Bugwood.org.



Figure 4. Symptoms of downy mildew on cucumber. Photo: D. Ferrin, LSU AgCenter, Bugwood.org.



Figure 5. Gray- to purple-colored pathogen growth (sign) on the lower surface of a squash leaf. Photo: R. A. Melanson, MSU Extension, Bugwood.org.

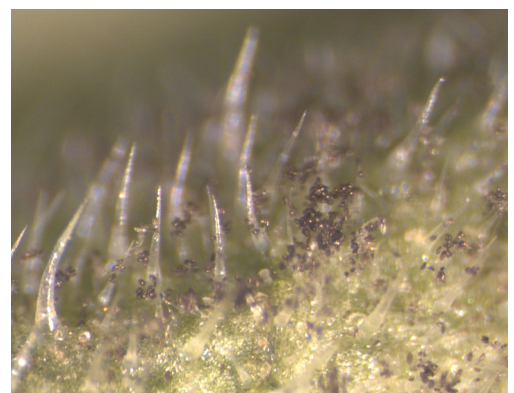


Figure 6. Magnified view of leaf hairs and pathogen spores (sign) on the lower surface of a squash leaf. Photo: R. A. Melanson, MSU Extension, Bugwood.org.

Pathogen and Disease Spread

Downy mildew in cucurbits is caused by the pathogen *Pseudoperonospora cubensis*. This pathogen is a member of a group of fungal-like organisms (oomycetes) commonly referred to as water molds. Several pathotypes (subdivisions) of the pathogen exist. Each pathotype differs in which cucurbit host or hosts it can infect. This means that, in a given area, downy mildew may develop on one or more cucurbit hosts but may not develop on others.

The cucurbit downy mildew pathogen requires a living host to survive and does not overwinter in areas where freezing temperatures prevent cucurbit production in the field. In these areas, pathogen spores are introduced each year on air currents from warmer areas. The timing of spore arrival each year often varies by prevailing weather patterns.

Disease development is favored by moderate temperatures, and moisture is required for infection.

Management

An integrated disease management program using several disease management methods should be used to manage downy mildew in cucurbits. While each of these practices can reduce the occurrence and development of downy mildew, fungicides are often necessary.

Biological Management

Plant cultivars that have some level of disease resistance. The cucumber varieties Calypso, Dasher II, General Lee, and Thunder are recommended for planting in Mississippi and have tolerance or resistance to downy mildew. Other cucurbit varieties with resistance may be available. Disease-resistance information is available on seed packets and seed company catalogs and websites.

Cultural Management

Use cultural practices that promote air flow and reduce leaf wetness. Cultural practices that promote air flow and reduce leaf wetness can help to reduce disease development; however, these practices may not be sufficient for managing downy mildew if favorable environmental conditions and high inoculum pressure are present. Leaf wetness may be reduced by increasing plant spacing, growing cucurbits on a trellis system, and avoiding overhead irrigation.

In protected structures, efforts should also be made to reduce the relative humidity.

Chemical Management (Fungicides)

Apply fungicides that are effective against downy mildew. Fungicides are often required to successfully manage downy mildew in cucurbits. Fungicides are most effective when applied before disease develops. It will be necessary to make regular applications of fungicides as long as the pathogen is present and environmental conditions are favorable for disease development. A list of fungicides labeled for use against downy mildew in various cucurbit crops grown for commercial production, as well as an efficacy table of those fungicides against certain diseases in each of the cucurbit crops, can be found in the latest edition of the [Southeastern U.S. Vegetable Crop Handbook](#). **Note:** Some products listed in this handbook may not be registered for use in Mississippi. Please see [MSU Extension Publication 3155 Pesticide Label Databases](#) for information on accessing online databases that provide state registration information for individual products.

Fungicides can be categorized as protectants and systemics. Protectant fungicides, such as chlorothalonil and mancozeb, remain on the surface of the plant and do not move into the plant; these fungicides prevent the pathogen from infecting the plant by acting like a shield. Systemic fungicides move into the plant and have some degree of mobility within it; these fungicides may attack the pathogen within the plant after infection has occurred. Protectant fungicides should be used in a spray program before the onset of disease; once disease has developed, systemic fungicides should be incorporated into a spray program.

Because the downy mildew pathogen can quickly develop resistance to fungicides, resistance-management strategies should be used when applying fungicides to manage downy mildew.

Rotating (alternating) fungicides is one method of resistance management. Each fungicide uses a specific biochemical mode of action to attack a pathogen. Fungicides are arranged into groups based on their mode of action. These groups, designated by the Fungicide Resistance Action Committee (FRAC), are assigned FRAC codes (e.g., M3, 21, 27). Rotation of fungicides should be based on the FRAC codes (groups) provided on the label, rather than by the product name or the active ingredient of a fungicide because different products may use the

same active ingredient or related active ingredients that have the same mode of action.

Tank-mixing a systemic fungicide with a protectant fungicide or a fungicide with a different mode of action (different FRAC group) is another method of resistance management. Always read the label to determine the FRAC group(s) of the active ingredient(s) in a product. It is not always necessary to tank-mix two products, each with a different active ingredient, since some products contain two active ingredients (sometimes a systemic and a protectant fungicide). Rotation and tank-mixing for resistance management can be used in combination as part of a spray program to manage downy mildew.

Homeowners do not have access to the variety of fungicides that are used to manage downy mildew in commercial cucurbit production. However, various trade name products containing the fungicides chlorothalonil or mancozeb are labeled for downy mildew on cucurbits and are available at local garden stores. These products can be used to manage downy mildew on cucurbits in home gardens. Since chlorothalonil and mancozeb have multiple modes of action, there is a decreased risk of the pathogen developing resistance to these fungicides. Various copper products are also available to homeowners and may also be labeled for use against downy mildew in cucurbits. Caution, however, must be used with the application of copper fungicides. Application during temperatures near or greater than 90°F or before 3 or more days of overcast, usually rainy, weather can burn plant tissue (cause phytotoxicity).

A number of approved organic or OMRI-listed products are labeled for use against downy mildew in cucurbits, including various biologicals, coppers, neem oil, and peroxides. The efficacy of tested products has varied across fungicide trials; however, coppers have generally shown the best efficacy. In these trials, tested products typically reduced disease in comparison to nontreated controls but did not prevent a significant level of disease from developing. Approved organic products are most effective before the onset of disease and will not provide adequate protection once disease pressure is high.

When using fungicides, remember: the label is the law. You must completely read product labels, and you must follow the label.

Use the [cucurbit downy mildew ipmPIPE website](#) to monitor outbreaks of downy mildew. A disease-forecasting system for cucurbit downy mildew was

started in North Carolina in 2008. From 2008 through 2022, this forecasting system tracked outbreaks of the disease and used disease reports and weather data to generate forecasts or risk-prediction maps of downy mildew occurring in a particular area. These forecasts helped growers decide when it was necessary to apply a fungicide to manage downy mildew. Forecasts were suspended in 2023, but the website is still used to track confirmed reports of cucurbit downy mildew. Website visitors can sign up to receive customized text or email alerts when outbreaks of cucurbit downy mildew are confirmed within a designated proximity of a specified location. These reports can be used to help growers make more informed decisions about when to incorporate fungicides for downy mildew into a spray program.

The website is most useful when cucurbit downy mildew outbreaks are reported in a timely fashion. Reports are most commonly provided by university personnel or plant pathologists who diagnose downy mildew on cucurbit samples from farms or gardens or from sentinel plots.

Sentinel plots are plantings of one or more crops or varieties that are susceptible to a particular disease and that are monitored regularly for the occurrence of that disease. The purpose of the cucurbit downy mildew sentinel plots is to regularly monitor susceptible cucurbit hosts for downy mildew to detect when the disease first appears in and remains active in an area. These plots are maintained to keep plants as healthy as possible, but fungicides that act against downy mildew are not applied. Sentinel plots for cucurbit downy mildew typically include cucumber, cantaloupe, pumpkin or kabocha squash, acorn squash, butternut squash, and watermelon.

Cucurbit Downy Mildew Sentinel Plots and Reports in Mississippi

Sentinel plots for cucurbit downy mildew were planted each spring and fall from 2016 through 2021 at the Truck Crops Branch Experiment Station in Crystal Springs (Copiah County), in the spring of 2016 and each fall from 2017 through 2021 at the North Mississippi Research and Extension Center in Verona (Lee County), and in the spring and fall of 2022 at the Beaumont Horticulture Unit (Perry County) to monitor for the occurrence of cucurbit downy mildew in Mississippi. Due to weather and limited resources, sentinel plots for cucurbit downy mildew have not been planted in Mississippi since 2023.

Cucurbit downy mildew has been detected each year in Mississippi since 2016, when monitoring efforts for this project began. The disease has most often first been detected in August or September, but it has been detected as early as mid-June. Downy mildew is commonly observed in fall cucurbit crops in many areas of Mississippi by September. A summary of counties with confirmed reports of cucurbit downy mildew in Mississippi since 2016 is available online on the [Monitoring and Reporting of Cucurbit Downy Mildew in Mississippi](#) webpage. A searchable database for previously confirmed reports of downy mildew in Mississippi is available on the cucurbit downy mildew ipmPIPE website; reports list the host, county, date of report, date of first occurrence, and type of planting.

If downy mildew on a cucurbit crop is suspected in Mississippi, please contact your local county Extension agent or Dr. Rebecca A. Melanson (rebecca.melanson@msstate.edu) so that samples can be obtained for disease confirmation and outbreaks of downy mildew can be reported.

References

- Colucci, S. J. & Holmes G. J. 2010. Downy mildew of cucurbits. *The Plant Health Instructor*, <https://doi.org/10.1094/PHI-I-2010-0825-01>
- Ivey, M. L. L. 2016. 2016 Louisiana cucurbit downy mildew spray recommendations. LSU AgCenter. 1 page.
- Keinath, A. P. 2015. Cucurbit downy mildew management for 2015. Clemson University Cooperative Extension. 2 pages.
- Ojiambo, P. S., Holmes, G. J., Britton, W., Keever, T., Adams, M. L., Babadoost, M., Bost, S. C., Boyles, R., Brooks, M., Damicone, J., Draper, M. A., Egel, D. S., Everts, K. L., Ferrin, D. M., Gevens, A. J., Gugino, B. K., Hausbeck, M. K., Ingram, D. M., Isakeit, T., Keinath, A. P., Koike, S. T., Langston, D., McGrath, M. T., Miller, S. A., Mulrooney, R., Rideout, S., Roddy, E., Seebold, K. W., Sikora, E. J., Thornton, A., Wick, R. L., Wyenandt, C. A., and Zhang, S. 2011. Cucurbit downy mildew ipmPIPE: A next generation web-based interactive tool for disease management and extension outreach. Online. *Plant Health Progress*, <https://doi.org/10.1094/PHP-2011-0411-01-RV>
- Zitter, T. A., Hopkins, D. L., & Thomas, C. E. (eds). 1996. *Compendium of Cucurbit Diseases*. American Phytopathological Society Press, St. Paul, MN. 87 pages.

Additional Resources

- Cucurbit Downy Mildew ipmPIPE website, <http://cdm.ipmpipe.org/>
- Organic Materials Review Institute (OMRI) website, <https://www.omri.org>
- How to Collect and Package Plant Disease Specimens for Diagnosis (M1562), <http://extension.msstate.edu/publications/miscellaneous/how-collect-and-package-plant-disease-specimens-for-diagnosis>
- Pesticide Label Database (P3155), <http://extension.msstate.edu/publications/publications/pesticide-label-databases>
- Plant Disease Sample Submission Form (F1139), http://extension.msstate.edu/sites/default/files/topic-pdfs/Plant%20Diseases%20and%20Nematode%20Diagnostic%20Services/F1139_web.pdf
- Southeast U.S. Vegetable Crop Handbook, available at www.vegcrophandbook.com or by contacting your local county Extension office.
- Taking Photos of Plant Disease Problems (P3022), <http://extension.msstate.edu/publications/publications/taking-photos-plant-disease-problems>

Some revisions to this publication were supported by a United States Department of Agriculture Agricultural Marketing Service Specialty Crop Multi-State Program grant administered by the Pennsylvania Department of Agriculture, PDA No. 44187029, Subaward No. 6060-MSU-PDA-7029. Any opinions or recommendations expressed in this publication do not necessarily reflect the views of any of these organizations.

The information given here is for educational purposes only. References to commercial products, trade names, or suppliers are made with the understanding that no endorsement is implied and that no discrimination against other products or suppliers is intended.

Publication 3076 (POD-06-24)

By **Rebecca A. Melanson**, PhD, Associate Extension Professor, Plant Pathology, Central Mississippi Research and Extension Center.



Copyright 2024 by Mississippi State University. All rights reserved. This publication may be copied and distributed without alteration for nonprofit educational purposes provided that credit is given to the Mississippi State University Extension Service.

Produced by Agricultural Communications.

Mississippi State University is an equal opportunity institution. Discrimination in university employment, programs, or activities based on race, color, ethnicity, sex, pregnancy, religion, national origin, disability, age, sexual orientation, gender identity, genetic information, status as a U.S. veteran, or any other status protected by applicable law is prohibited.

Extension Service of Mississippi State University, cooperating with U.S. Department of Agriculture. Published in furtherance of Acts of Congress, May 8 and June 30, 1914. ANGUS L. CATCHOT JR., Director