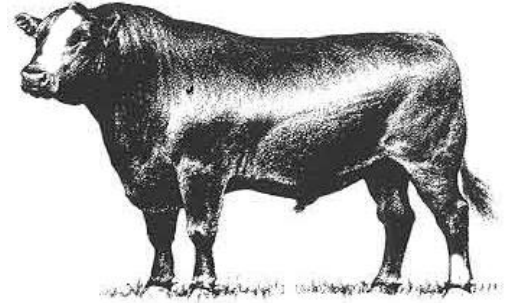


Hinds Community College Bull Test
Mississippi Beef Cattle Improvement Association

2021 Spring Bull Sale

Thursday, March 4, 2021 • 12:00 Noon
Hinds Community College
1310 Seven Springs Road, Raymond, MS



MISSISSIPPI STATE UNIVERSITY™
EXTENSION

Dear Cattle Producers:

The Hinds Community College Bull Test and Mississippi Beef Cattle Improvement Association cattle marketing partnership is a proven source for breeding cattle that build profits. In today's cattle market, the payoffs from using quality herd sires make acquiring high quality genetics a must for producers.

We recognize that quality bulls are essential to producing profitable calf crops. Time and time again our bull buyers cite the breed leading genetics, environmental adaptability, freight, and customer service advantages of purchasing bulls raised in Mississippi. All bulls in our spring sale are screened for structure, disposition, and performance and are guaranteed as breeders. These bulls have passed breeding soundness examinations, met minimum growth and scrotal circumference requirements, and represent quality genetics.

The sale will be broadcast live from the Raymond sale site over the Extension distance education system. A link to the sale site will be available at extension.msstate.edu/beef.

The cattle will be available for viewing at the Hinds Community College Sale Facility in Raymond, MS starting on the afternoon of March 3rd. BCIA members, breeders, and Extension personnel will be glad to assist you in selecting breeding cattle that will work well for your operation. We look forward to seeing you at the sale on March 4th.

Sincerely,

Kenny Banes

Hinds Bull Test Manager

Brandi B. Karisch

Extension Beef Cattle Specialist

Cooperative Extension Service · Mississippi State University
Box 9815 · Mississippi State, MS 39762-9815 · Office (662) 325-3516 · Fax (662) 325-8873

Mississippi State University, United States Department of Agriculture, Counties Cooperating
Mississippi State University does not discriminate on the basis of race, color, religion, national origin, sex, age, disability, or veteran status.

Consignors

- Monogram Farms
- Blossom Hill Farm
- Thames Angus Farms
- Mississippi State University
- Vista Farms, LLC
- R&K Cattle



Consignor Contact Information

Hinds Consignors:

Monogram Farms (Angus)

Roland Preuss
1614 Ford Road
Terry, MS 39170
(601)878-5896

Blossom Hill Farm (SimAngus)

Sammy Blossom
2147 Joe Hall Road
Flora, MS 39071
601-941-1276

BCIA Consignors:

Mississippi State University Beef Unit (Angus)

Bryan Carter &
Dr. Brandi Karisch
Box 9815
Mississippi State, MS 39762
Bryan: (541) 377-0440
Brandi: (662) 325-7465
brandi.karisch@msstate.edu

R&K Cattle (SimAngus)

Mike Keene
1090 Churchwell Rd
Hattiesburg, MS 39401
601-606-7382
mike.keene@msstate.edu

Thames Angus Farms (Angus & SimAngus)

Tony Thames
187 Carmel New Hope Rd
Jayess, MS 39641
(601) 756-1357
thamesfarm@gmail.com

Vista Farms, LLC (Angus)

Scott & Sarah McElfresh
3514 CR 23
Fayette, AL 35555
(205) 904-8384, (912) 257-5707
info@vistafarms.org

Terms, Conditions, and General Sale Information

TERMS: Terms of the sale are cash. Settlements are to be made with the clerk immediately after the conclusion of the auction. The Mississippi Beef Cattle Improvement Association acts as an agent only. The contract is between the buyer and seller.

BIDDING & DISPUTES: All cattle will be sold at public auction to the highest bidder. The auctioneer will settle any disputes concerning bids, and auctioneer decisions will be final. *Auctioneer: Jarvene Shackelford - American Livestock Brokers: H: (662) 837-4904 | Mobile: (662) 837-1776*

HEALTH: Health papers from licensed veterinarians accompany cattle to the sale. It is the responsibility of the buyer to know the health restrictions of his/her state and be aware of the possibility of any subsequent testing of animals purchased through this sale as required by law.

REGISTRATION: All bulls have been registered with their respective breed associations. Properly signed certificate of registry transfers will be furnished to the buyer.

BREEDING GUARANTEE: Animals are guaranteed to be without defects, but nothing more.

Bulls: All sale bulls will have documentation of a passed breeding soundness exam, including scrotal measurements within 30 days prior to sale. Scrotal circumference measurement minimums for sale bulls are 32 cm for 12–16 month old bulls, 34 cm for 17–23 month old bulls, and 36 cm for 24+ month old bulls. Bulls failing to breed after a trial of six months may be returned to the seller, if in good condition. The seller reserves the right to try said animal for six months, and if he proves to be a breeder, to return him to the buyer at the buyer's expense. If the bull proves to be a non-breeder, a satisfactory exchange will be made or purchase price refunded.

ANNOUNCEMENTS: Announcements made from the auction block on sale day shall take precedence over information printed in the catalog. It is therefore the buyer's responsibility to pay attention to any such announcements.

PROCESSING FOR SALE: Cattle are to be delivered to the sale location by 12:00 noon on March 3, 2021(the day preceding the sale). Cattle will be weighed, beginning at 1:00 p.m. that day and available for viewing afterwards.

SALE ORDER: Hinds Bull Test Bulls will sell first based on an index $(2 \times \text{WDA} + 1 \times \text{ADG})/3$. The MBCIA bulls will sell based on individual performance data, EPDs, general conformation and quality. A selection index based on the individual bull's score in the following categories will be used to rank bulls for determination of sale order (highest scoring will sell first); CE or BW EPD (max of 5 points), WW EPD (max. of 7.5 points), YW EPD (max. of 7.5 points), scrotal circumference (max. of 5 points), weight per day of age (max. of 15 points), IMF EPD (max of 5 points), REA EPD (max of 5 points), and visual appraisal (max. of 40 points). Five points will be added to a bull's selection index total if ultrasound scan results are provided.

CATTLE REMOVAL: Cattle purchased will be cared for 24 hours after the conclusion of the sale without charge. Arrangements for removal from grounds must be made at the conclusion of the 24 hours.

LIABILITY: All persons who attend this sale do so at their own risk. The owners and sponsors assume no responsibility, legal or otherwise, for any accidents that may occur.

Explanation of Performance Records

*

Bull Designations

Bulls meeting certain expected progeny difference (EPD) requirements are noted with one or more of the following designations:

- **Balanced Trait:** *should provide moderation for calving ease, growth, and milking ability*
- **Terminal:** *should produce calves with exceptional growth performance*
- **Calving Ease:** *should reduce the risk of calving difficulty in females to which a bull is bred*
- **Carcass Merit:** *should produce calves with good post-weaning growth, ribeye area, and marbling*

Individual Bull Performance Records

<i>BW</i>	<i>Adj. WW</i>	<i>WW Ratio</i>	<i>Adj. YW</i>	<i>YW Ratio</i>	<i>Adj. IMF</i>	<i>IMF Ratio</i>	<i>Adj. REA</i>	<i>REA Ratio</i>
1	2	3	4	5	6	7	8	9

1. **Birth Weight** – Actual birth weight.
2. **Adjusted Weaning Weight** – Weaning weight adjusted to 205 days of age.
3. **Adjusted Weaning Weight Ratio** – Bull's weaning weight as compared to his contemporary group. Average = 100.
4. **Adjusted Yearling Weight** – Yearling weight adjusted to 365 days of age.
5. **Adjusted Yearling Weight Ratio** – Bull's yearling weight as compared to his contemporary group. Average = 100.
6. **Adjusted Intramuscular Fat** – Percent intramuscular fat of the ribeye adjusted to 12 months of age.
7. **Adjusted Intramuscular Fat Ratio** – Bull's adjusted percent intramuscular fat as compared to his contemporary group. Average = 100.
8. **Adjusted Ribeye Area** – Area of the ribeye in square inches adjusted to 12 months of age.
9. **Adjusted Ribeye Area Ratio** – Bull's adjusted ribeye area as compared to his contemporary group. Average = 100.

Expected Progeny Differences

Expected progeny differences are a useful genetic selection tool. They provide predictions of the expected performance of the calves sired by a bull compared to the expected performance of calves sired by other bulls of the same breed. They are calculated as part of national cattle evaluation programs and are based on the performance records of an individual animal, its relatives, and its progeny. Most breed associations publish EPDs on individual animals in sire summaries and searchable Internet databases. Breed associations also publish tables that show where individual animals rank within the breed for specific traits.

Expected progeny differences can be used to make herd genetic improvement in both commercial and seedstock operations. They should be used in conjunction with other selection criteria in a balanced approach to select herd sires with acceptable combinations of economically relevant traits that will complement cow herds and match market targets. Genetic improvement can mean increased weaning weights and growth performance, enhanced reproductive performance and better performance on the rail, all of which can enhance the profitability of a cattle operation. **Printed EPD values are accurate as of 2/18/2021.**

Accuracy Values (ACC)

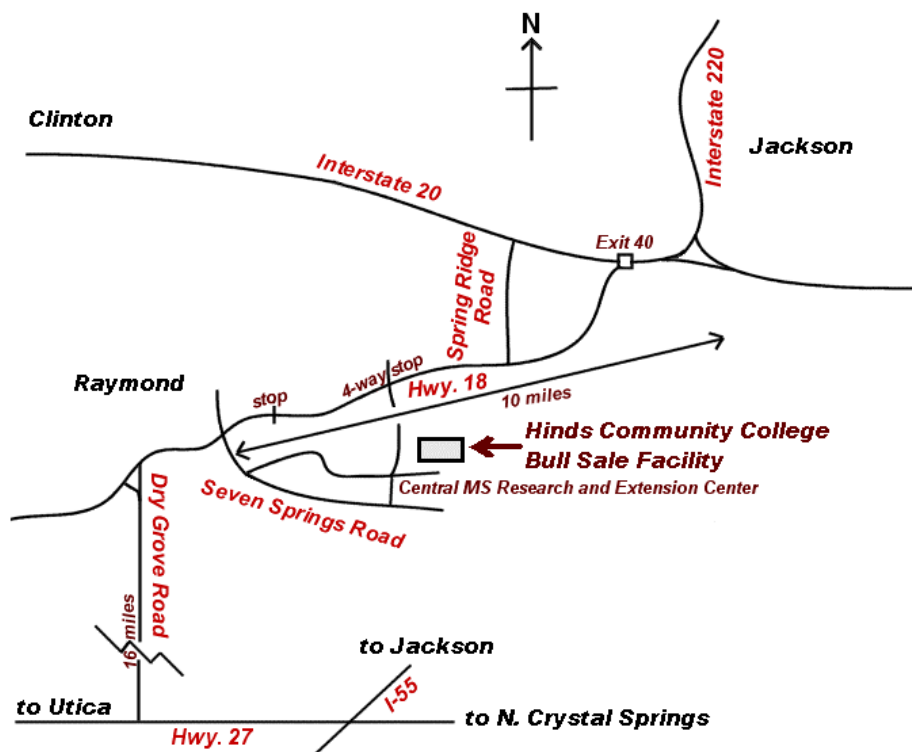
Expected progeny differences come with **accuracy values (ACC)** that give an indication of the reliability of the EPDs. Accuracy values help breeders determine the level of uncertainty or risk associated with selection decisions. They are reported as a decimal number between zero and one. Larger values indicate greater accuracy. Remember, EPDs can be directly compared regardless of accuracy. Accuracies simply reflect risk.

Expected change tables are published by breed associations as part of national cattle evaluations to show how much variation can be expected for EPDs at specific accuracy levels. As more usable performance information becomes available for an animal and its relatives and progeny, the more accurate or reliable its EPDs become. Thus, a young, unproven bull with no calves will have lower accuracy EPDs than a proven sire with hundreds of calf records.

Spring 2021 EPD Percentile Rankings for Non-Parents

BREED	% RANKING	EPD							
		CE	Birth	Weaning	Yearling	Milk	Scrotal	Marb	REA
Angus	TOP 25%	10	0.1	65	115	29	1.17	0.77	0.73
	50%	7	1.3	57	101	25	0.78	0.54	0.56
	75%	3	2.4	49	87	22	0.39	0.33	0.40
SimAngus	Top 25%	14.2	-0.8	80.9	126.1	25.3		0.43	0.78
	50%	12.1	0.5	74.1	114.4	22.5		0.28	0.64
	75%	10.2	1.8	67.5	102.8	19.6		0.17	0.50

Map to Sale Location



Please join us next fall in Raymond for the 2021 Fall BCIA Bull and Heifer Sale on Thursday, November 4, 2021.

Monogram Farms



MONOGRAM 62 RENOWN 1079

1

ANGUS

Hinds
Bull Test

Calved: 10/4/2019 Tattoo:1079 Reg. #: 198277987

S A V Renown 3439
Monogram Renown 626
Monogram Queen 2649
Monogram Net Worth 2819
Monogram Queen 421
Monogram Queen 2028

BW	Adj. WW	Adj. YW	On Test Weight	End Test Weight	Test WDA	WDA Ratio	Test ADG	ADG Ratio						
70	711	1315	1010	1755	3.55	109	6.65	123						
	CED	BW	WW	YW	RADG	YH	SC	Doc	HP	CEM	Milk	MW	MH	\$EN
EPD	-1.6	+5.1	+64	+112			+4.9			+2	+29			-28
ACC	0.05	0.05	0.05	0.05			0.05			0.05	0.05			
	CW	Marb	RE	Fat	\$M	\$W	\$F	\$G	\$B	\$C				
EPD	45	.26	.74	.010	37	54	88	36	124	198				
ACC	0.21	0.16	0.20	0.23										

Monogram Farms



MONOGRAM 62 RENOWN 1049

2

ANGUS

Hinds
Bull Test

Calved: 10/8/2019 Tattoo: 1049 Reg. #: 19827985

S A V Renown 3439
Monogram Renown 626
Monogram Queen 2649
HARB Pendleton 765 J H
Monogram Evergreen 2401
Monogram Evergreen 4443

BW	Adj. WW	Adj. YW	On Test Weight	End Test Weight	Test WDA	WDA Ratio	Test ADG	ADG Ratio						
86	672	1273	1020	1680	3.43	105	5.89	109						
	CED	BW	WW	YW	RADG	YH	SC	Doc	HP	CEM	Milk	MW	MH	\$EN
EPD	-8	5.9	57	100						2	31			-21
ACC	0.17	0.35	0.30	0.19						0.11	0.14			
	CW	Marb	RE	Fat	\$M	\$W	\$F	\$G	\$B	\$C				
EPD	45	.19	.45	.025	34	47	88	28	116	184				
ACC	0.22	.17	.21	.18										

Monogram Farms



MONOGRAM 62 RENOWN 1379

3

ANGUS

Hinds
Bull Test

Calved: 9/28/2019 Tattoo: 1379 Reg. #: 19827998

S A V Renown 3439
Monogram Renown 626
Monogram Queen 2649
S A V Priority 7283
Monogram Queen 2643
Monogram Queen 5274

BW	Adj. WW	Adj. YW	On Test Weight	End Test Weight	Test WDA	WDA Ratio	Test ADG	ADG Ratio						
80	587	1139	870	1530	3.06	94	5.89	109						
	CED	BW	WW	YW	RADG	YH	SC	Doc	HP	CEM	Milk	MW	MH	\$EN
EPD	-4	4.8	50	82						3	25			-1
ACC	0.17	0.35	0.29	0.18						0.11	0.14			
	CW	Marb	RE	Fat	\$M	\$W	\$F	\$G	\$B	\$C				
EPD	+34	+0.07	+0.60	+0.002	51	40	75	31	106	188				
ACC	0.05	0.05	0.05	0.05										

Monogram Farms



MONOGRAM 115 BN 1579

7

ANGUS

*Hinds
Bull Test*

Calved: 9/15/2019 Tattoo: 1579 Reg. #: 19828006

S A V Renown 3439
Monogram Renown 626
Monogram Queen 2649
S A V Brilliance 8077
Monogram Queen 424
Monogram Queen 2028

<i>BW</i>	<i>Adj. WW</i>	<i>Adj. YW</i>	<i>On Test Weight</i>	<i>End Test Weight</i>	<i>Test WDA</i>	<i>WDA Ratio</i>	<i>Test ADG</i>	<i>ADG Ratio</i>						
80	560	1128	915	1495	3.03	93.03	5.18	96						
	<i>CED</i>	<i>BW</i>	<i>WW</i>	<i>YW</i>	<i>RADG</i>	<i>YH</i>	<i>SC</i>	<i>Doc</i>	<i>HP</i>	<i>CEM</i>	<i>Milk</i>	<i>MW</i>	<i>MH</i>	<i>\$EN</i>
<i>EPD</i>	-5	4.7	48	85						1	28			-7
<i>ACC</i>	0.17	0.35	0.29	0.18						0.11	0.13			
	<i>CW</i>	<i>Marb</i>	<i>RE</i>	<i>Fat</i>	<i>\$M</i>	<i>\$W</i>	<i>\$F</i>	<i>\$G</i>	<i>\$B</i>	<i>\$C</i>				
<i>EPD</i>	28	.31	.35	.022	42	39	67	32	100	172				
<i>ACC</i>	0.23	0.18	0.22	0.18										

Monogram Farms



MONOGRAM MS 29

8

ANGUS

*Hinds
Bull Test*

Calved: 11/11/2019 Tattoo: 29 Reg. #: 19827961

GDAR Leupold 298
Monogram Moonshadow 5927
Monogram Queen 9432
Monogram Resource 625
Monogram Betty 1167
Monogram Betty 302

<i>BW</i>	<i>Adj. WW</i>	<i>Adj. YW</i>	<i>On Test Weight</i>	<i>End Test Weight</i>	<i>Test WDA</i>	<i>WDA Ratio</i>	<i>Test ADG</i>	<i>ADG Ratio</i>						
72	655	1151	915	1420	3.11	96	4.51	83						
	<i>CED</i>	<i>BW</i>	<i>WW</i>	<i>YW</i>	<i>RADG</i>	<i>YH</i>	<i>SC</i>	<i>Doc</i>	<i>HP</i>	<i>CEM</i>	<i>Milk</i>	<i>MW</i>	<i>MH</i>	<i>\$EN</i>
<i>EPD</i>	8	1.2	54	93						7	29			-12
<i>ACC</i>	0.19	0.33	0.26	0.14						0.09	0.10			
	<i>CW</i>	<i>Marb</i>	<i>RE</i>	<i>Fat</i>	<i>\$M</i>	<i>\$W</i>	<i>\$F</i>	<i>\$G</i>	<i>\$B</i>	<i>\$C</i>				
<i>EPD</i>	48	.52	.60	.003	81	58	84	47	131	251				
<i>ACC</i>	0.20	0.15	0.19	0.17										

Blossom Hill Farm



YELLOWSTONE BHF 9G

9

SIMANGUS (3/4 SM 1/4 AN)

*Hinds
Bull Test*

Calved: 9/1/2019 Tattoo: 9G Reg. #: 3773620

HOOKS TAURUS 24T
HOOK'S YELLOWSTONE 97Y
HOOKS SHEYENNE 77S
GW LUCKY DICE 187H
MISS CK MS 1/2 SIM 425W
IRVINGTON 265 3572 4225

<i>BW</i>	<i>Adj. WW</i>	<i>Adj. YW</i>	<i>On Test Weight</i>	<i>End Test Weight</i>	<i>Test WDA</i>	<i>WDA Ratio</i>	<i>Test ADG</i>	<i>ADG Ratio</i>						
64		1130	1095	1600	3.04	100	4.51	100						
	<i>CED</i>	<i>BW</i>	<i>WW</i>	<i>YW</i>	<i>ADG</i>	<i>MWW</i>	<i>Doc</i>	<i>Stay</i>	<i>CEM</i>	<i>Milk</i>				
<i>EPD</i>	14.1	-1.1	71	111.1	0.27	61.5	9	15.1	7.5	26				
<i>ACC</i>	0.23	0.25	0.23	0.24	0.92	0.25	0.22	0.19	0.22	0.24				
	<i>CW</i>	<i>Marb</i>	<i>RE</i>	<i>Fat</i>	<i>YG</i>	<i>Shr</i>	<i>API</i>	<i>TI</i>						
<i>EPD</i>	35.7	0.27	0.68	-0.064	-0.27	-0.47	132.7	76.9						
<i>ACC</i>	0.31	0.28	0.30	0.27	0.25	0.06								

Monogram Farms



MONOGRAM 114 RESOURCE 1929

10

ANGUS

Hinds
Bull Test

Calved: 10/16/2019 Tattoo: 1929 Reg. #: 19828018

Monogram Resource 625
 Monogram 62 Resource 1147
 Monogram Evergreen 752
 Monogram Brand Name 463
 Monogram Evergreen 1366
 Monogram Evergreen 2403

<i>BW</i>	<i>Adj. WW</i>	<i>Adj. YW</i>	<i>On Test Weight</i>	<i>End Test Weight</i>	<i>Test WDA</i>	<i>WDA Ratio</i>	<i>Test ADG</i>	<i>ADG Ratio</i>
88	648	1052	915	1361	2.82	87	3.98	73

	<i>CED</i>	<i>BW</i>	<i>WW</i>	<i>YW</i>	<i>RADG</i>	<i>YH</i>	<i>SC</i>	<i>Doc</i>	<i>HP</i>	<i>CEM</i>	<i>Milk</i>	<i>MW</i>	<i>MH</i>	<i>\$EN</i>
<i>EPD</i>	-6	5.5	73	123						2	25			-24
<i>ACC</i>	0.14	0.32	0.26	0.13						0.06	0.08			

	<i>CW</i>	<i>Marb</i>	<i>RE</i>	<i>Fat</i>	<i>\$M</i>	<i>\$W</i>	<i>\$F</i>	<i>\$G</i>	<i>\$B</i>	<i>\$C</i>
<i>EPD</i>	45	.23	.59	.017	64	58	93	32	125	226
<i>ACC</i>	0.19	0.14	0.19	0.18						

Mississippi State University



MSU Profit G071

Balanced, Terminal

Connealy Counselor
Hoover Counselor N29
Erica of Ellston G366
S A V Final Answer 0035
MSU Traveler A091
MSU Traveler X140

Lot 11

ANGUS

Calved: 09/25/2019 Tattoo: G071 Reg. #: 19777186

BW	Adj. WW	WW Ratio	Adj. YW	YW Ratio	Adj. IMF	IMF Ratio	Adj. REA	REA Ratio						
72	740	100	1007	110										
	CED	BW	WW	YW	RADG	DMI	YH	SC	HP	CEM	Milk	MW	MH	\$EN
EPD	7	0.7	59	104	I+0.23	I+0.84	I+0.5	I+1.37	I+12.6	6	29	I+56	I+0.3	-17
ACC	0.22	0.31	0.23	0.21	0.05	0.05	0.05	0.05	0.05	0.12	0.14	0.05	0.05	
	CW	Marb	RE	Fat	\$M	\$W	\$F	\$G	\$B	\$C				
EPD	I+42	I+0.53	I+0.61	I+0.018	56	62	87	46	134	230				
ACC	0.05	0.05	0.05	0.05										

Mississippi State University



MSU Ten X G074

Balanced, Calving Ease

RC Ten X A106
MSU Ten X C093
MSU Entense W083 Z173
Basin Excitement
MSU Traveler E062
MSU Traveler A081

Lot 12

ANGUS

Calved: 10/05/2019 Tattoo: G074 Reg. #: 19620941

BW	Adj. WW	WW Ratio	Adj. YW	YW Ratio	Adj. IMF	IMF Ratio	Adj. REA	REA Ratio						
44	534	94	929	103										
	CED	BW	WW	YW	RADG	DMI	YH	SC	HP	CEM	Milk	MW	MH	\$EN
EPD	16	-2.4	51	90	I+0.20	I+0.56	I+0	0.93	I+12.9	15	27	I+21	I-0.2	-2
ACC	0.20	0.33	0.28	0.22	0.05	0.05	0.05	0.28	0.05	0.09	0.09	0.05	0.05	
	CW	Marb	RE	Fat	\$M	\$W	\$F	\$G	\$B	\$C				
EPD	I+16	I+0.42	I+0.41	I+0.028	73	61	56	38	93	194				
ACC	0.21	0.19	0.19	0.17										

Mississippi State University



MSU Jetset G077

Balanced

O C C Jet Stream 825J
Duff Jetset 7122
O C C Revolution Rose 887H
C R A Bextor 872 5205 608
BPG 876 Emerge 8222
PCT Rosie's Jauer 6036

Lot 13

ANGUS

Calved: 10/14/2019 Tattoo: G077 Reg. #: 19782249

BW	Adj. WW	WW Ratio	Adj. YW	YW Ratio	Adj. IMF	IMF Ratio	Adj. REA	REA Ratio						
81	624	100	930	100										
	CED	BW	WW	YW	RADG	DMI	YH	SC	HP	CEM	Milk	MW	MH	\$EN
EPD	I+5	I+1.7	I+51	I+90	I+0.19	I+0.89	I+0.3	I+0.49	I+11.3	I+3	I+31	I+41	I+0.1	-12
ACC	0.05	0.05	0.05	0.05	0.05	0.05	0.05	0.05	0.05	0.05	0.05	0.05	0.05	
	CW	Marb	RE	Fat	\$M	\$W	\$F	\$G	\$B	\$C				
EPD	I+33	I+0.34	I+0.75	I+0.018	47	59	71	39	110	190				
ACC	0.05	0.05	0.05	0.05										

Vista Farms, LLC



VF Monumental 9140



Balanced, Calving Ease, Terminal

ANGUS

Lot 20

Calved: 08/06/2019 Tattoo: 9140 Reg. #: 19754018

3F Epic 4631

EXAR Monumental 6056B

FWY 7008 of C085 4029

Plattemere Weigh Up K360

Deer Valley Rita 2206

Deer Valley Rita 9266

BW	Adj. WW	WW Ratio	Adj. YW	YW Ratio	Adj. IMF	IMF Ratio	Adj. REA	REA Ratio						
83	685	93	1008	97										
	CED	BW	WW	YW	RADG	DMI	YH	SC	HP	CEM	Milk	MW	MH	\$EN
EPD	12	-1.0	56	98	0.21	0.86	0.4	1.56	8.6	12	33	33	0.2	-10
ACC	0.35	0.55	0.48	0.43	0.34	0.34	0.46	0.48	0.23	0.31	0.31	0.35	0.38	
	CW	Marb	RE	Fat	\$M	\$W	\$F	\$G	\$B	\$C				
EPD	44	1.05	0.77	0.001	54	73	83	74	156	256				
ACC	0.43	0.38	0.38	0.34										

Vista Farms, LLC



VF Jet Black 9141



Balanced, Terminal

ANGUS

Lot 21

Calved: 08/07/2019 Tattoo: 9141 Reg. #: 19755050

Connealy Black Granite

Bar R Jet Black 5063

Bar R Iris Anita 0113

Rito 9Q13 of Rita 5F56 GHM

FWY 9Q13 of 9306 9545

2 Bar Mile High 9360

BW	Adj. WW	WW Ratio	Adj. YW	YW Ratio	Adj. IMF	IMF Ratio	Adj. REA	REA Ratio						
82	667	90	1069	103										
	CED	BW	WW	YW	RADG	DMI	YH	SC	HP	CEM	Milk	MW	MH	\$EN
EPD	5	2.5	69	126	0.28	1.15	0.9	1.32	11.5	10	26	97	1.1	-36
ACC	0.34	0.54	0.46	0.42	0.33	0.33	0.46	0.48	0.20	0.29	0.28	0.35	0.38	
	CW	Marb	RE	Fat	\$M	\$W	\$F	\$G	\$B	\$C				
EPD	64	0.41	1.01	-0.003	52	65	117	48	161	261				
ACC	0.41	0.36	0.36	0.32										

Vista Farms, LLC



VF Jet Black 9147



Balanced, Terminal, Calving Ease

ANGUS

Lot 22

Calved: 08/08/2019 Tattoo: 9147 Reg. #: 19755060

Connealy Black Granite

Bar R Jet Black 5063

Bar R Iris Anita 0113

B/R New Day 454

Maplecrest GAR Blackcap 1014

G A R Total 9A38

BW	Adj. WW	WW Ratio	Adj. YW	YW Ratio	Adj. IMF	IMF Ratio	Adj. REA	REA Ratio						
71	755	102	1133	109										
	CED	BW	WW	YW	RADG	DMI	YH	SC	HP	CEM	Milk	MW	MH	\$EN
EPD	12	0.2	76	142	0.31	1.43	0.7	0.99	6.1	11	21	96	0.7	-33
ACC	0.36	0.56	0.48	0.44	0.36	0.36	0.48	0.49	0.23	0.30	0.31	0.37	0.40	
	CW	Marb	RE	Fat	\$M	\$W	\$F	\$G	\$B	\$C				
EPD	70	0.50	1.03	-0.022	39	72	124	53	177	269				
ACC	0.43	0.38	0.38	0.34										

Vista Farms, LLC



Deer Valley Capitalist 9205

Balanced, Terminal

ANGUS

Lot 23

Calved: 02/02/2019 Tattoo: 9205 Reg. #: 19607164

Connealy Capitalist 028
LD Capitalist 316
LD Dixie Erica 2053
G A R Prophet
Deer Valley 5828
Deer Valley Rita 0212

BW	Adj. WW	WW Ratio	Adj. YW	YW Ratio	Act. IMF	IMF Ratio	Act. REA	REA Ratio						
76	732	106	1065	108										
	CED	BW	WW	YW	RADG	DMI	YH	SC	HP	CEM	Milk	MW	MH	\$EN
EPD	7	2.8	77	127	0.22	1.40	0.9	0.40	8.4	14	24	81	0.9	-27
ACC	0.34	0.53	0.44	0.39	0.32	0.32	0.43	0.44	0.25	0.30	0.31	0.34	0.36	
	CW	Marb	RE	Fat	\$M	\$W	\$F	\$G	\$B	\$C				
EPD	56	0.68	0.39	0.027	58	75	93	49	142	242				
ACC	0.41	0.36	0.36	0.32										

Thames Angus Farms



TAF 6216 H Dam 1350

ANGUS

Lot 24

Calved: 02/01/2020 Tattoo: 1350 Reg. #: 19937328

TAF H Dam 5877
TAF 5863 H Dam 6216
TAF Princess 6782
Hoff Limited Edition S C 594
TAF Princess 850
Thames Princess 8350

BW	Adj. WW	WW Ratio	Adj. YW	YW Ratio	Act. IMF	IMF Ratio	Act. REA	REA Ratio						
75	745	117	1147	105										
	CED	BW	WW	YW	RADG	DMI	YH	SC	HP	CEM	Milk	MW	MH	\$EN
EPD	3	3.4	47	77	0.15	0.65	1.0	0.37	6.5	4	23	54	0.3	-14
ACC	0.25	0.48	0.40	0.32	0.22	0.22	0.35	0.28	0.11	0.19	0.23	0.27	0.30	
	CW	Marb	RE	Fat	\$M	\$W	\$F	\$G	\$B	\$C				
EPD	41	0.63	0.48	0.032	29	39	79	48	127	194				
ACC	0.32	0.26	0.27	0.22										

Thames Angus Farms



TAF Gregor 6200

ANGUS

Lot 25

Calved: 01/04/2020 Tattoo: 6200 Reg. #: 19846821

Hoover Dam
TAF Hashtag 1115
TAF Princess 906
S A V 004 Density 4336
TAF Princess 773
TAF Princess 6718

BW	Adj. WW	WW Ratio	Adj. YW	YW Ratio	Act. IMF	IMF Ratio	Act. REA	REA Ratio						
69	562	88	978	89										
	CED	BW	WW	YW	RADG	DMI	YH	SC	HP	CEM	Milk	MW	MH	\$EN
EPD	2	2.9	52	91	I+0.26	I+0.53	I+0.5	I+1.46	I+9.6	4	23	I+59	I+0.3	-6
ACC	0.17	0.35	0.29	0.22	0.05	0.05	0.05	0.05	0.05	0.09	0.13	0.05	0.05	
	CW	Marb	RE	Fat	\$M	\$W	\$F	\$G	\$B	\$C				
EPD	I+45	I+0.47	I+0.70	I+0.005	54	44	93	46	138	233				
ACC	0.05	0.05	0.05	0.05										

Thames Angus Farms



TAF Hashtag 6270
★ Terminal

ANGUS

Calved: 01/25/2020 Tattoo: 6270 Reg. #: 19846819

Hoover Dam
TAF Hashtag 1115
TAF Princess 906
S A V 004 Density 4336
TAF Princess 6602
TAF Princess 6185

Lot 26

BW	Adj. WW	WW Ratio	Adj. YW	YW Ratio	Act. IMF	IMF Ratio	Act. REA	REA Ratio						
72	606	95	1156	106										
	<i>CED</i>	<i>BW</i>	<i>WW</i>	<i>YW</i>	<i>RADG</i>	<i>DMI</i>	<i>YH</i>	<i>SC</i>	<i>HP</i>	<i>CEM</i>	<i>Milk</i>	<i>MW</i>	<i>MH</i>	<i>\$EN</i>
<i>EPD</i>	4	3.9	61	113	0.30	0.35	1.0	2.32	10.7	0	27	79	0.7	-28
<i>ACC</i>	0.31	0.52	0.45	0.37	0.28	0.28	0.41	0.36	0.18	0.25	0.28	0.33	0.36	
	<i>CW</i>	<i>Marb</i>	<i>RE</i>	<i>Fat</i>	<i>\$M</i>	<i>\$W</i>	<i>\$F</i>	<i>\$G</i>	<i>\$B</i>	<i>\$C</i>				
<i>EPD</i>	45	0.62	0.52	0.003	41	53	98	50	148	233				
<i>ACC</i>	0.38	0.32	0.32	0.28										

Thames Angus Farms



TAF 5047 Resource 7389

ANGUS

Calved: 12/20/2019 Tattoo: 7389 Reg. #: 19862170

S A V Resource 1441
TAF Resource 5047
TAF Pride 5372
Hoover Dam
TAF Princess 6741
TAF Princess 6256

Lot 27

BW	Adj. WW	WW Ratio	Adj. YW	YW Ratio	Act. IMF	IMF Ratio	Act. REA	REA Ratio						
70	591	113	980	100										
	<i>CED</i>	<i>BW</i>	<i>WW</i>	<i>YW</i>	<i>RADG</i>	<i>DMI</i>	<i>YH</i>	<i>SC</i>	<i>HP</i>	<i>CEM</i>	<i>Milk</i>	<i>MW</i>	<i>MH</i>	<i>\$EN</i>
<i>EPD</i>	-1	4.3	70	123	0.29	0.73	1.2	1.99	9.3	-3	26	81	0.6	-29
<i>ACC</i>	0.32	0.54	0.45	0.36	0.30	0.30	0.43	0.38	0.20	0.26	0.29	0.34	0.38	
	<i>CW</i>	<i>Marb</i>	<i>RE</i>	<i>Fat</i>	<i>\$M</i>	<i>\$W</i>	<i>\$F</i>	<i>\$G</i>	<i>\$B</i>	<i>\$C</i>				
<i>EPD</i>	67	0.12	0.82	-0.025	44	63	116	33	15	239				
<i>ACC</i>	0.39	0.34	0.34	0.30										

Thames Angus Farms



MR NLC UPGRADE U8676
SVF ALLEDIANCE Y802
DOUBLE R MISS 29G T18
CONNEALY RIGHT ANSWER

Lot 28

SIMANGUS (1/2 SM 1/2AN)

Calved: 11/30/2019 Tattoo: 1539G Reg. #: 3850162

746
TAF CHARISMA 1413

TAF CHARISMA 1081

BW	Adj. WW	WW Ratio	Adj. YW	YW Ratio	Adj. IMF	IMF Ratio	Adj. REA	REA Ratio		
74	627	100	1003	100						
	CE	BW	WW	YW	ADG	MCE	Milk	MWW	Stay	Doc
EPD	12.3	1.2	86.1	135.1	0.31	5.3	18.6	61.6	9.5	14.3
ACC	0.19	0.19	0.19	0.19	0.19	0.18	0.19	0.19	0.14	0.23
	CW	YG	Marb	BF	REA	Shr	API	TI		
EPD	48.9	-0.12	0.20	-0.040	0.57	-0.26	116.4	79.7		
ACC	0.27	0.22	0.25	0.23	0.27	0.04				

R & K Cattle



MR NLC UPGRADE U8676
RYALS GRADE UP
LIMESTONE ROYAL LASS S600
KRIEGERS MR RIGHT Z185
RYALS MISS HARVEY 89
HARVEY MISS ENAMEL 218

Lot 29

SIMANGUS (1/2 SM 1/2AN)

Calved: 10/15/2019 Tattoo: G2B Reg. #: 3749752

BW	Adj. WW	WW Ratio	Adj. YW	YW Ratio	Adj. IMF	IMF Ratio	Adj. REA	REA Ratio		
75	645	104	1110	105						
	CE	BW	WW	YW	ADG	MCE	Milk	MWW	Stay	Doc
EPD	10.9	1.6	77.4	120.1	0.27	6.3	21.5	60.1	12.4	9.1
ACC	0.15	0.14	0.18	0.17	0.17	0.12	0.11	0.14	0.08	0.12
	CW	YG	Marb	BF	REA	Shr	API	TI		
EPD	39.6	-0.11	0.41	-0.024	0.54		127.3	79.2		
ACC	0.24	0.20	0.22	0.22	0.24					