

Mississippi Beef Cattle Improvement Association

Mississippi Beef Cattle Improvement Association—Productivity and Quality



Upcoming events:

- March 6—MBCIA Annual Membership Meeting, Raymond, MS, 6:00 p.m.
- March 7—Hinds Bull Test and MBCIA Spring Bull Sale, Raymond, MS, Noon
- March 12—Beef Heifer Development Short Course
- March 14-16—MSU-ES Cattle Artificial Insemination School, Mississippi State, MS
- March 25-26—Fed Beef Challenge Cattle Delivery, Mississippi State, MS
- April 2—Cattlemen's Exchange Feeder Calf Board Sale, Winona, MS
- April 12—Beef Cattle Boot Camp, Mississippi State, MS
- April 19—Beef Cattle Boot Camp, Raymond, MS

Inside this issue:

2013 Cattle Inventory Estimates	2
Cattlemen's College Videos	3
Beef Cattle Boot Camps	3
Judicious Antimicrobial Use	4
MBCIA Membership Application	4

Mississippi BCIA Annual Membership Meeting and Supper

Space is still available for the Mississippi BCIA annual membership meeting and supper event. Mississippi BCIA will hold its annual membership meeting on Wednesday, March 6, 2013 starting at 6:00 p.m. at the Hinds Community College Bull Sale Facility in Raymond, MS.

The annual meeting is open to new and current MBCIA members. Many current MBCIA board members will be present and available to take input and ideas regarding the association's programs. A sponsored supper will be provided along with an educational program.

The program will feature Dr. Dave Smith, Mikell and Mary Cheek Davis Endowed Chair with the MSU College of Veterinary Medicine, speaking on "Trichomoniasis: What Cattle Producers Should Know".

Meeting attendees will also have the opportunity that evening to view the 75 bulls and 8 bred heifers scheduled to sell at the Hinds Community College Bull Test and MBCIA Spring Bull and Heifer Sales the following day.

Please RSVP to Mari Quinn at: (662) 325-3516 or mquinn@ads.msstate.edu



MBCIA Annual Membership Meeting

Wednesday, March 6, 2013, 6:00 p.m.
Hinds CC Bull Sale Facility, Raymond,

MARCH 7, 2013 • Noon

BULL SALE

HINDS BULL TEST • MBCIA



75 Registered Bulls • 8 Bred Heifers

Raymond, MS

2013 Cattle Inventory Estimates Released



The greater calf crop in 2012 over the year before provided a bright spot in the recent Mississippi cattle inventory statistics

The U.S. Department of Agriculture (USDA) National Agricultural Statistics Service (NASS) released the January Cattle Inventory Report on February 1, 2013.

United States cattle inventory estimates

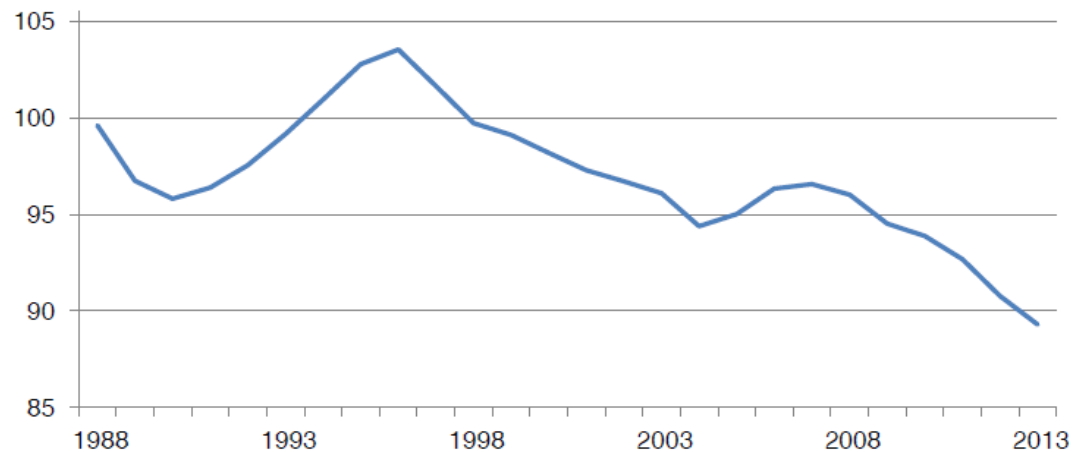
- U.S. cattle inventory declined by 2 percent in 2012
- On January 1, 2013, all cattle and calves in the U.S. totaled 89,299,600 head

Mississippi estimates (cont.)

- Milk cows that have calved, at 14,000 head, were unchanged as well
- All heifers 500 pounds and over at 120,000 head, were down 4 percent
- Beef cow replacement heifers at 78,000 head, were down 5 percent
- Milk cow replacement heifers at 7,000 head, were unchanged

Cattle Inventory – United States: January 1

Million head



Mississippi cattle inventory estimates

- Mississippi January cattle inventory was down 4 percent from last year
- On January 1, 2013, all cattle and calves in Mississippi totaled 910,000 head
- All cows and heifers that have calved, at 500,000 head, were level from the year before
- Beef cows that have calved, at 486,000 head, was also steady year over year
- Other heifers at 35,000 head, were down 3 percent
- Steers weighing 500 pounds and over at 41,000 head, were down 33 percent
- Bulls weighing 500 pounds and over at 39,000 head, were unchanged
- Calves under 500 pounds at 210,000 head, were down 7 percent
- The 2012 calf crop is estimated at 400,000 head, up 4 percent from 2011

“...The Mississippi cow herd remained steady over the last year, but steer and heifer numbers declined slightly.”

Cattlemen's College Videos Online

This year marked the 20th anniversary of the Pfizer (now Zoetis) Cattlemen's College at the Cattle Industry Annual Convention and NCBA Trade Show. This annual event brings in premier speakers from across the country to address a variety of topics important to U.S. beef producers.

Several sessions from the recent 2013 Cattlemen's College are now archived online for anytime viewing. Online videos include:

- Credit Availability to Operate
Video length: 55 minutes 32 seconds
- Financial Management
Video length: 51 minutes 2 seconds

Archived presentation materials from previous years are included on the website as well. This archive is an informative resource pool of recent information relevant to U.S. cattle production operations.



Sponsored by Pfizer Animal Health



"...Educational presentations are available online for producers interested in learning more about how to manage cattle operation finances."

Hands-on Knowledge—Beef Cattle Boot Camps

The Beef Cattle Boot Camps offered through the Mississippi State University Extension Service and Mississippi Agricultural and Forestry Experiment Stations (MAFES) are an opportunity to gain hands-on experience with cattle management skills.

The 2013 Boot Camp topics include:

- ✓ Hoof care
- ✓ Calf preconditioning
- ✓ Aging by dentition
- ✓ Crossbreeding
- ✓ Clover Management
- ✓ Interpreting feed test reports
- ✓ Mineral nutrition
- ✓ Environmental BMPs
- ✓ Farm equipment maintenance



The 2013 Boot Camps are scheduled for Friday, April 12, 2013 at the MAFES South Farm Beef Unit on the Mississippi State University campus and Friday, April 19, 2013 at the MAFES Brown Loam Branch Station in Raymond, MS. The program will be the same at each location.

Registration fees are \$35 per person in advance and \$45 per person at the door. A lunch meal will be provided to Boot Camp participants. For more information on the Beef Cattle Boot Camps, contact Jane Parish, in the MSU Animal and Dairy Sciences Department at jparish@ads.msstate.edu or 662-325-7466. Boot Camp brochures are available online at msucares.com/livestock/beef/beef_calendar.html

"The Beef Cattle Boot Camp topics change each year, so past attendees can learn new information at each Boot Camp..."

BEEF CATTLE BOOT CAMP



The Boot Camps take place on MAFES research stations and provide for hands-on experience in practical cattle operation management

Mississippi Beef Cattle Improvement
Association—Productivity and Quality

Mississippi Beef Cattle Improvement Assn.
Box 9815
Mississippi State, MS 39762

Phone: 662-325-7466
Fax: 662-325-8873
Email: jparish@ads.msstate.edu



Send questions or comments to
Jane Parish, Extension Beef Cattle Specialist,
Mississippi State University Extension Service

Joe Parish

Mississippi State
University does not discriminate on the
basis of race, color, religion, national
origin, sex, sexual orientation or group
affiliation, age, disability, or veteran status.



Visit MBCIA online at
[http://msucares.com/
livestock/beef/mbcia/](http://msucares.com/livestock/beef/mbcia/)

MBCIA Membership Application

Name: _____

Address: _____

City: _____

County: _____ State: _____ Zip: _____

Phone: _____ Email: _____

(Check one) Seedstock: Commercial:

Cattle breed(s): _____

Completed applications and \$5 annual dues or \$100 life-time dues payable to Mississippi BCIA should be mailed to:

Mississippi Beef Cattle Improvement Association
Jane Parish, Extension Beef Cattle Specialist
Box 9815, Mississippi State, MS 39762

A Beef Producers Guide for Judicious Use of Antimicrobials in Cattle

1. Prevent Problems: Emphasize appropriate husbandry and hygiene, routine health examinations, and vaccinations.

2. Select and Use Antibiotics Carefully: Consult with your veterinarian on the selection and use of antibiotics. Have a valid reason to use an antibiotic. Therapeutic alternatives should be considered prior to using antimicrobial therapy.

3. Avoid Using Antibiotics Important in Human Medicine as First Line Therapy: Avoid using as the first antibiotic those medications that are important to treating strategic human or animal infections.

4. Use the Laboratory to Help You Select Antibiotics: Cultures and susceptibility test results should be used to aid in the selection of antimicrobials, whenever possible.

5. Combination Antibiotic Therapy is Discouraged Unless there is Clear Evidence the Specific Practice Is Beneficial: select and dose an antibiotic to affect a cure.

6. Avoid Inappropriate Antibiotic Use: Confine therapeutic antimicrobial use to proven clinical indications, avoiding inappropriate uses such as for viral infections without bacterial complication.

7. Treatment Programs Should Reflect Best Use Principles: Regimens for therapeutic antimicrobial use should be optimized using current pharmacological information and principles.

8. Treat the Fewest Number of Animals Possible: Limit antibiotic use to sick or at risk animals.

9. Treat for the Recommended Time Period: To minimize the potential for bacteria to become resistant to antimicrobials.

10. Avoid Environmental Contamination with Antibiotics: Steps should be taken to minimize antimicrobials reaching the environment through spillage, contaminated ground run off or aerosolization.

11. Keep Records of Antibiotic Use: Accurate records of treatment and outcome should be used to evaluate therapeutic regimens and always follow proper withdrawal times.

12. Follow Label Directions: Follow label instructions and never use antibiotics other than as labeled without a valid veterinary prescription.

13. Extralabel Antibiotic Use Must Follow FDA Regulations: Prescriptions, including extra label use of medications must meet the Animal Medicinal Drug Use Clarification Act (AMDUCA) amendments to the Food, Drug, and Cosmetic Act and its regulations. This includes having a valid Veterinary-Client-Relationship.

14. Subtherapeutic Antibiotic Use is Discouraged: Antibiotic use should be limited to prevent or control disease and should not be used if the principle intent is to improve performance.

Guidelines 1-13 adapted from AVMA, AABP and AVC
Appropriate Veterinary Antibiotic Use Guidelines.

Source: www.bqa.org/CMDocs/bqa/JudiciousMicrobials.pdf