

# County Health Economics Profile

## MS Congressional District 2

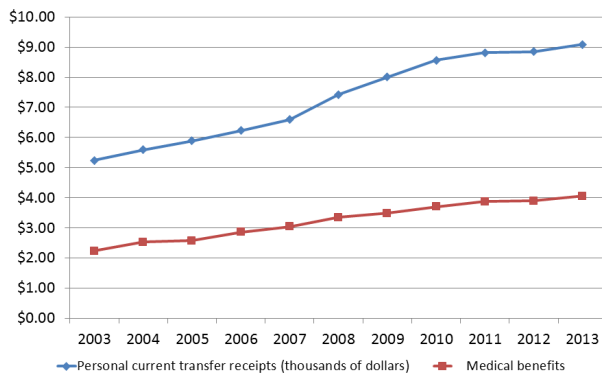
[msucares.com/crd/county\\_profiles](http://msucares.com/crd/county_profiles)



**MISSISSIPPI STATE**  
UNIVERSITY  
EXTENSION SERVICE

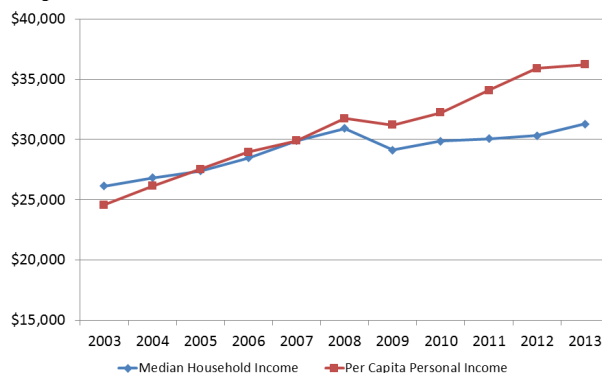
Demographics	Congressional 2	Mississippi	United States
Total Population, 2014 (Census)	830,821	2,994,079	318,857,056
Percent Change in Total Population, 2010-2013 (Census)	-1.2%	0.9%	3.3%
Percent of the Population that is Non-white, 2013 (Census)	62.0%	39.7%	21.6%
Pct of Population that is Older than 64 years, 2013 (Census)	12.4%	13.1%	13.4%
Percent of the Population in Poverty, 2013 (SAIPE)	29.9%	23.9%	15.8%
Pct of the Population under 18 in Poverty, 2013 Estimate (SAIPE)	26.0%	34.0%	22.2%
Current Median Household Income, 2013 Estimate (SAIPE)	\$31,301	\$38,191	\$52,250
Not Covered by Health Insurance — 2013 (Census)	17.9%	17.4%	14.9%
Covered by Private Health Insurance — 2013 (Census)	51.4%	56.8%	66.0%
Covered by Public Health Insurance — 2013 (Census)	39.9%	36.4%	30.2%

**Per Capita Transfer Payments (Total Govt Payments and Govt Medical Benefits)**  
Congressional District 2



Source: Bureau of Economic Analysis

**Median Household Income and Per Capita Personal Income**  
Congressional District 2



Median Household Income was estimated by averaging county household income across the district

Source: Bureau of Economic Analysis

### Economic Impact of Healthcare Sector 2014— EMSI/IMPLAN

Sector	Direct Impact	Mult	Total Impact
Output (Sales)	\$7,710,059,378	1.71	\$13,161,920,014
Labor Income	\$6,597,106,776	1.25	\$8,235,673,690
Employment	119,406	1.38	164,755

### Economic Impact of Healthcare Sector 2014— EMSI/IMPLAN

Sector	Sector	Jobs	Earnings
482	Hospitals	77,052	\$3,678,286,822
478	Outpatient Care	2,246	\$150,802,827
475-7	Office of prov.	17,126	\$1,770,245,368
478	Med/diag labs	2,246	\$150,802,827
483	Nur & Res Care	13,956	\$452,356,895
480	Home health	5,266	\$353,724,313

Gross County/State Product (Bureau of Economic Analysis)	Adams County		Mississippi		% Chg in County	% of County GCP
Top Ten Sectors (Millions of dollars)	2010	2014	2010	2014	10-14	2014
Total Gross County Product	28,696	30,862	95,539	104,851	7.5%	100.0%
Total Healthcare	2,522	2,717	7,024	7,729	7.7%	8.8%
Ambulatory Health Care Services	426	462	3,777	4,232	8.4%	1.5%
All Hospitals/Res Care Facilities	404	410	2,631	2,837	1.4%	1.3%
Social Assistance	57	65	616	660	13.3%	0.2%

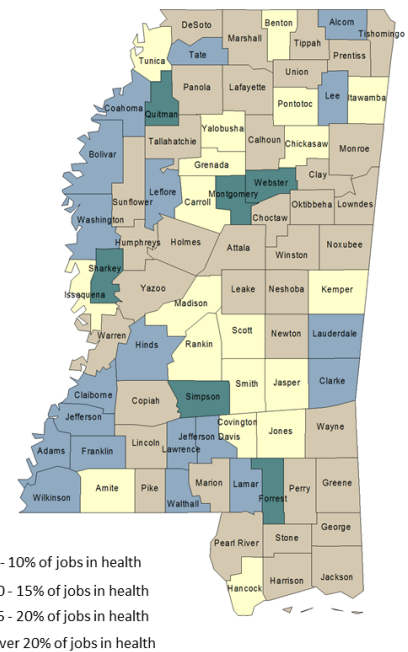
### Top Health & Social Assistance Employment Sectors 2014— EMSI

NAICS	Sector	2014 Jobs	Ann Earn/Job
6221	Gen Med/Surgical Hospitals	9,534	\$56,373
6241	Individual/Family Services	7,747	\$19,268
6211	Offices of Physicians	5,449	\$88,655
6231	Skilled Nursing Care Fac	5,349	\$30,435
6244	Child Day Care Services	3,536	\$19,534
90362	Hospitals (Local Govt)	3,085	\$60,991

### Top Health & Social Assistance Occupation Sectors 2014— EMSI

SOC	Sector	2014 Jobs	Median Hr Earn
	Total	36,566	\$23.05
31-1010	Nursing/Psy/Home Health Aides	10,948	\$9.95
29-1140	Registered Nurses	9,062	\$29.59
29-2060	Lic Practical/Lic Voc Nurses	2,891	\$18.40
29-1120	Therapists	1,853	\$32.37
31-9090	Misc Healthcare Support Occ	1,828	\$14.22
29-2050	Health Pract Support Techs	1,786	\$14.74
29-1060	Physicians and Surgeons	1,394	\$67.99

### Percentage of Jobs in Health Care Sector (2014)



### Health Occupations per 100,000 Population (2014)— EMSI

Sector	Occup
Physicians/Surgeons (all types)	169
Reg Nurses/Nurse Pract/Phys Assts	1,177
Lic Practical/Vocational Nurses	348
Technologist/Technicians (all types)	558
Nursing/Psy/Home Health Aides	1,318

Discrimination based upon race, color, religion, sex, national origin, age, disability, or veteran's status is a violation of federal and state law and MSU policy and will not be tolerated. Discrimination based upon sexual orientation or group affiliations is a violation of MSU policy and will not be tolerated.

Data assembled by Alan Barefield, Lauren Behel, Shelby Hayes, and Cassidy Pitts, Dept of Agricultural Economics, Mississippi State University Extension Service. For further information, contact Alan Barefield at 662.325.7995 or [alan.barefield@msstate.edu](mailto:alan.barefield@msstate.edu).