

PRICE IMPACTS OF TARIFFS ON U.S. IMPORTS OF LIVE/FRESH AND FROZEN OYSTERS

ABSTRACT

- This newsletter compiles the monthly selected U.S. oyster imports and calculated duties from January 2021 to January 2026.
- The average oyster import prices are imputed from the values and volumes of selected oyster imports.
- This newsletter explores the impacts on the imputed average prices of selected U.S. oyster imports by calculated duties and selected economic factors.

KEYWORDS

- Oyster imports, calculated duties, and price impacts.

SUGGESTED CITATION

Posadas, Benedict C. 2026. Price Impacts of Tariffs on U.S. Imports of Live/Fresh and Frozen Oysters. Vol. 16, No. 6. Mississippi State University Extension and Mississippi-Alabama Grant Publication MASGP-26-059-6. May 15, 2026.

<https://extension.msstate.edu/newsletters/mississippi-marketmaker>.

METHODS

- Monthly data on selected U.S. oyster imports are compiled from the NOAA Fisheries website from January 2021 to January 2026.
- The calculated duties on selected U.S. oyster imports are summarized monthly since January 2021.
- An econometric model is estimated to measure the impacts of calculated duties and selected economic factors on the imputed average prices of selected U.S. oyster products.
- Source of raw data: <https://www.fisheries.noaa.gov/foss>.

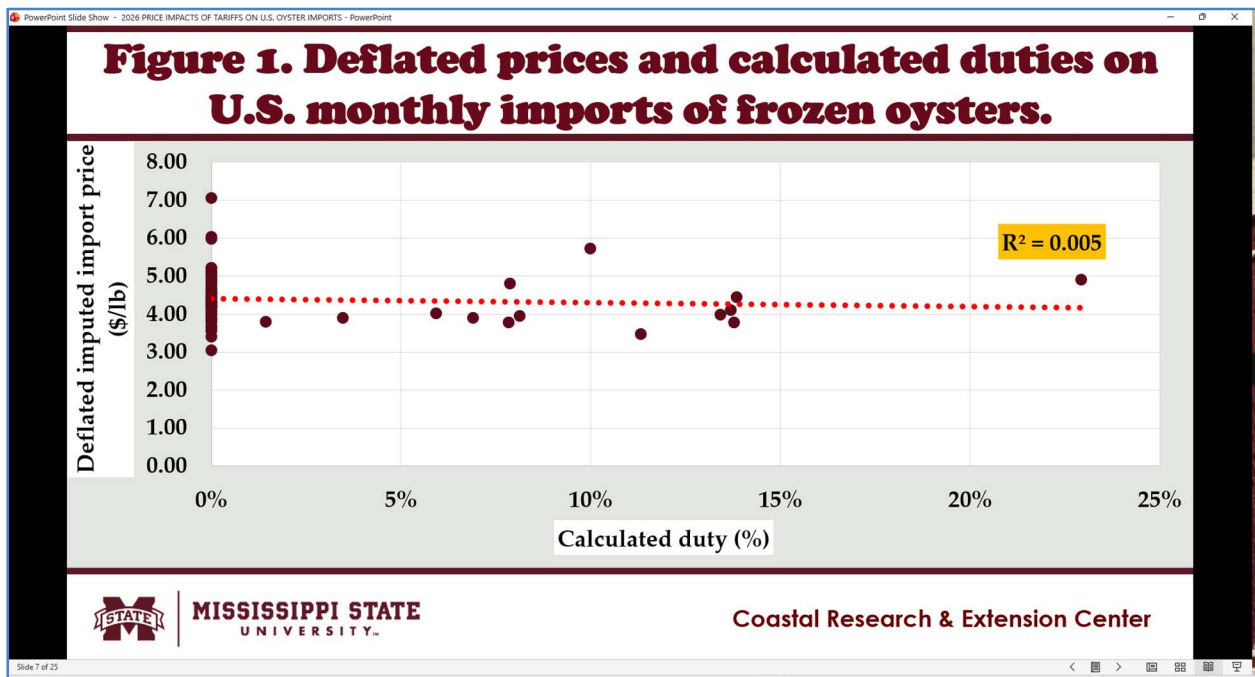
U.S. SEAFOOD TRADE MODEL

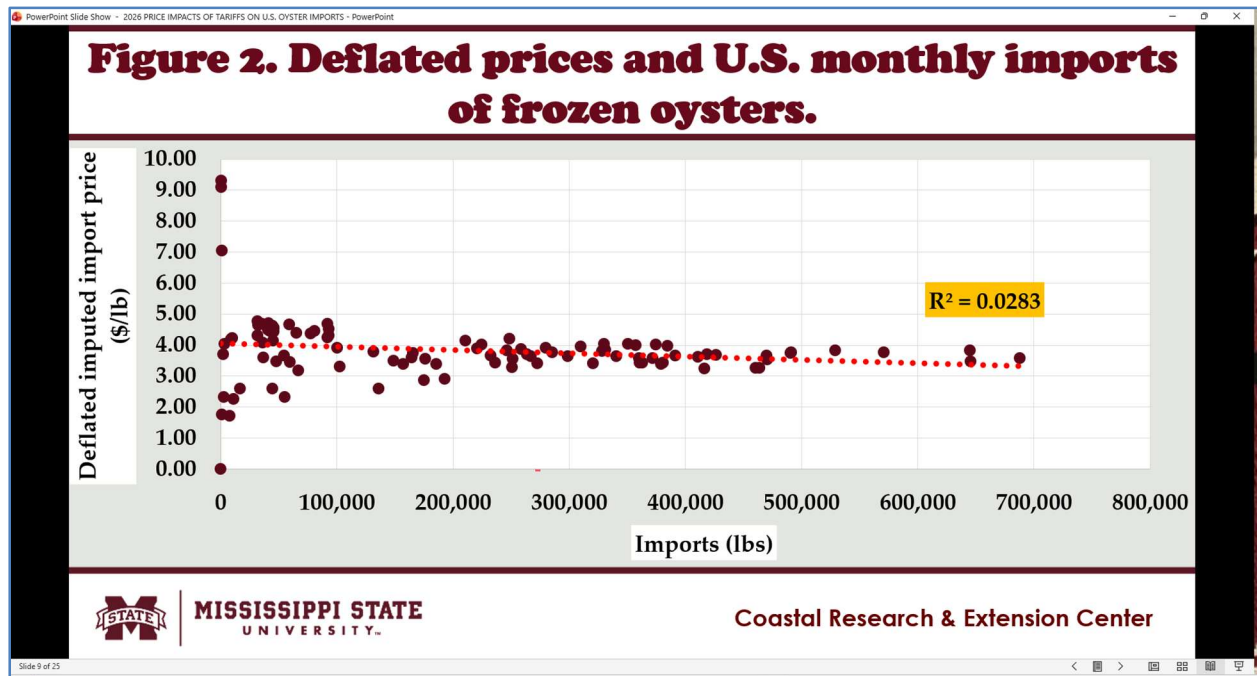
- The econometric model of the **U.S. SEAFOOD TRADE** assumes that import prices could be explained by:
 - Year,
 - Month,
 - Product source (wild or farmed),
 - Product form (live/fresh, frozen),
 - Average calculated duties (%),
 - Volume of imports (lb),
 - Other variables.
- The **Ordinary Least Squares** (OLS) model of **U.S. SEAFOOD TRADE** consists of the following dependent variables:
 - Deflated imputed average import price (\$/kg).
- The OLS model of U.S. seafood trade is estimated using the robust variance procedure in Stata 19.
- The **variation inflation factor** is calculated to detect the possible presence of multicollinearity.
- The marginal impacts are computed using the **margins procedure**.

Mississippi State University is an equal opportunity institution.

U.S. MONTHLY IMPORTS OF FROZEN OYSTERS

- Figure 1 shows the relatively flat scatter diagram between the deflated prices and calculated duties on U.S. monthly imports of frozen oysters.
- Figure 2 shows the downward sloping scatter diagram between the deflated prices and U.S. monthly imports of frozen oysters.
- U.S. imports of frozen oysters consisted of frozen farmed oysters and frozen wild oysters.
- Frozen farmed oyster imports were subjected to calculated duties starting in April 2025.
- Calculated duties were imposed on frozen wild oyster imports starting February 2025.

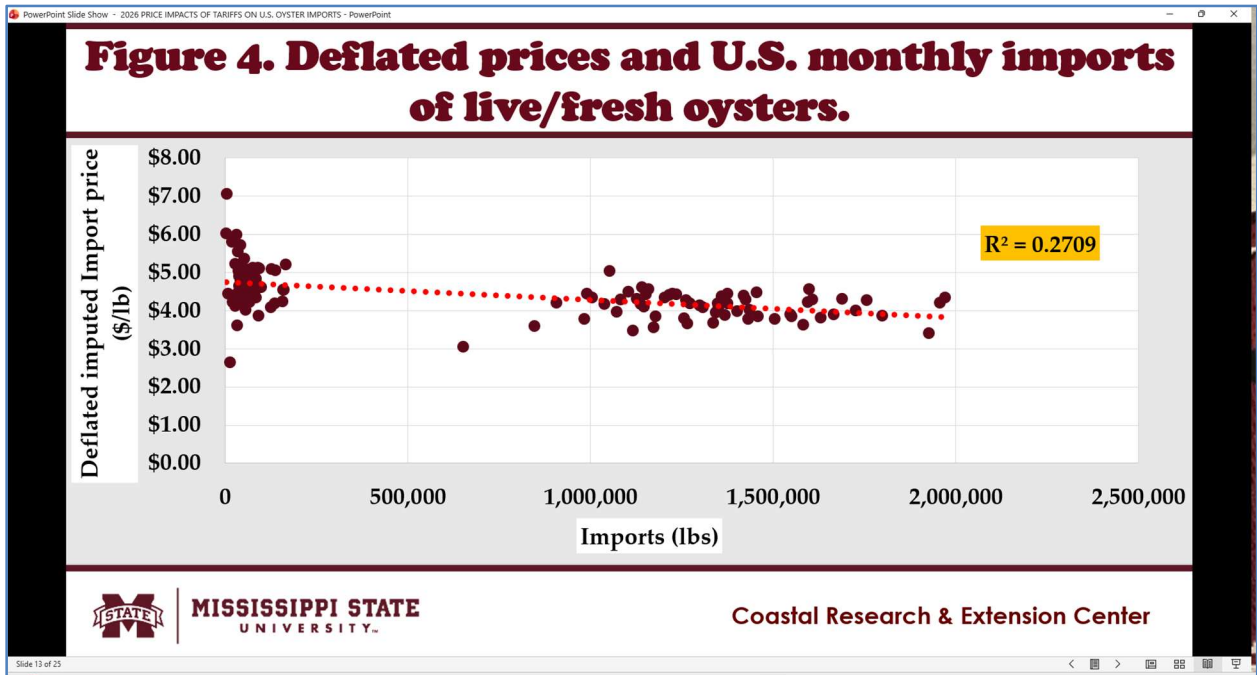
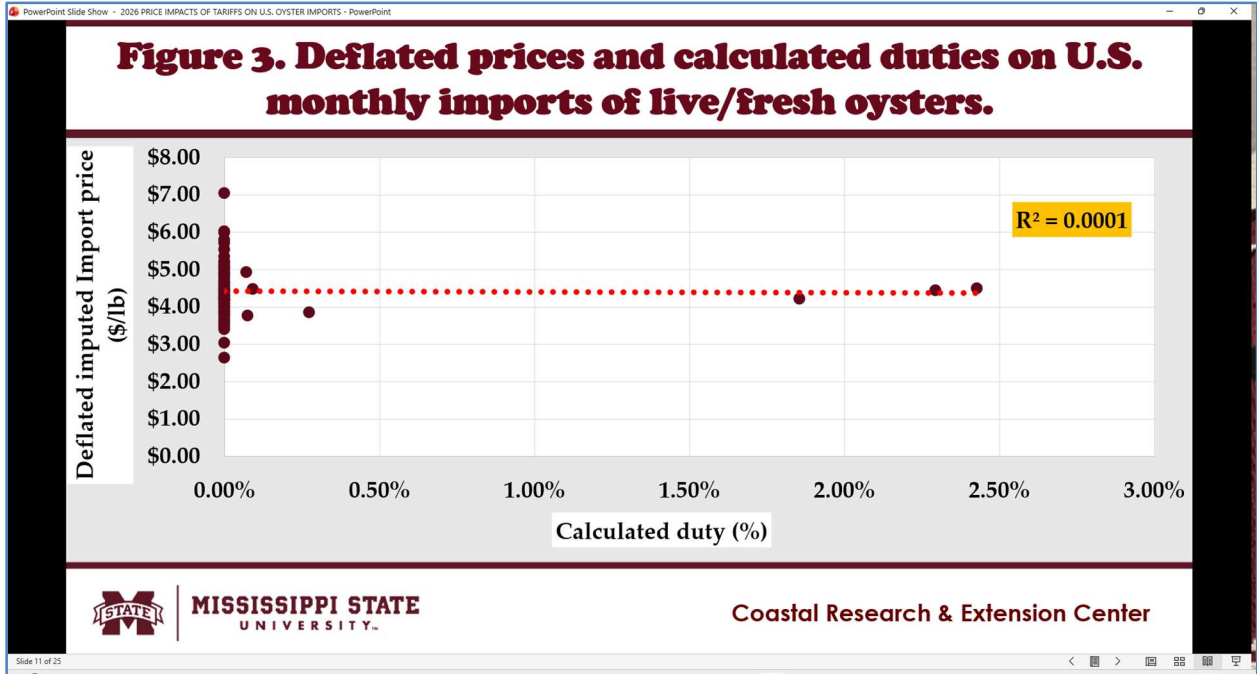




U.S. MONTHLY IMPORTS OF LIVE/FRESH OYSTERS

- Figure 3 shows the relatively flat scatter diagram between the deflated prices and calculated duties on U.S. monthly imports of live/fresh oysters.
- Figure 4 shows the downward sloping scatter diagram between the deflated prices and U.S. monthly imports of live/fresh oysters.
- U.S. imports of live/fresh oysters consisted of live/fresh farmed oysters and live/fresh wild oysters.
- Live/Fresh farmed oysters imports were subjected to calculated duties starting in June 2025.
- Calculated duties were imposed on live/fresh wild oyster imports starting May 2025.

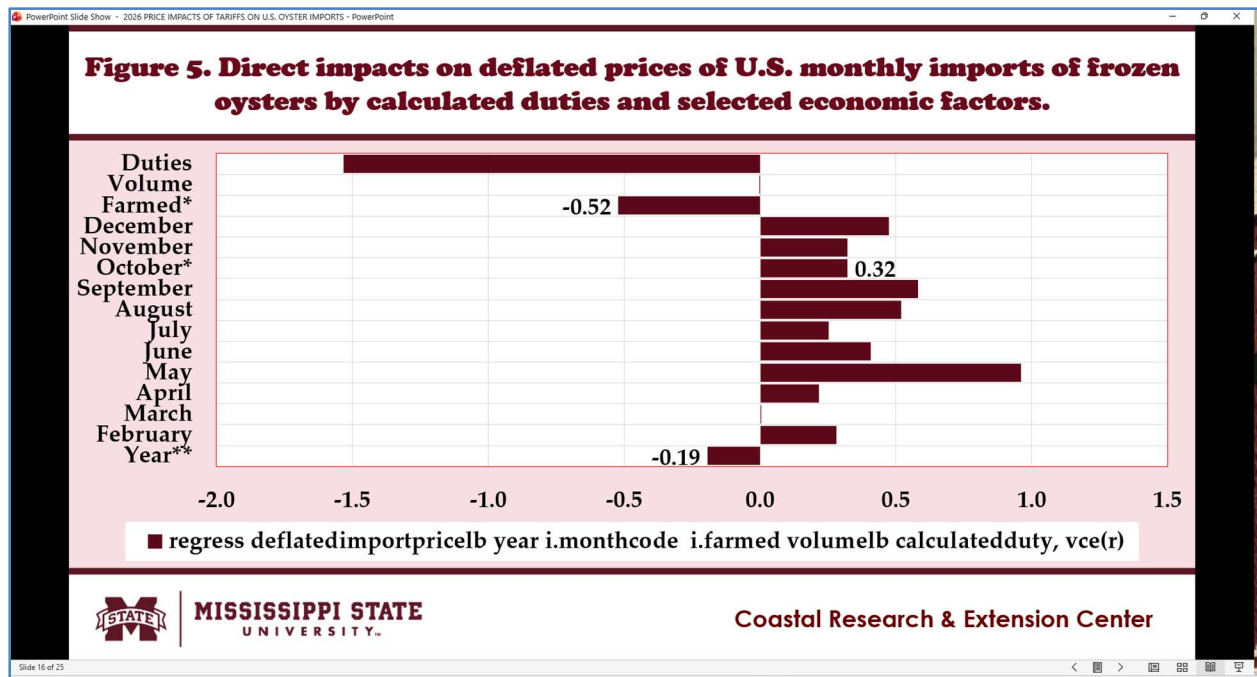
Mississippi State University is an equal opportunity institution.



Mississippi State University is an equal opportunity institution.

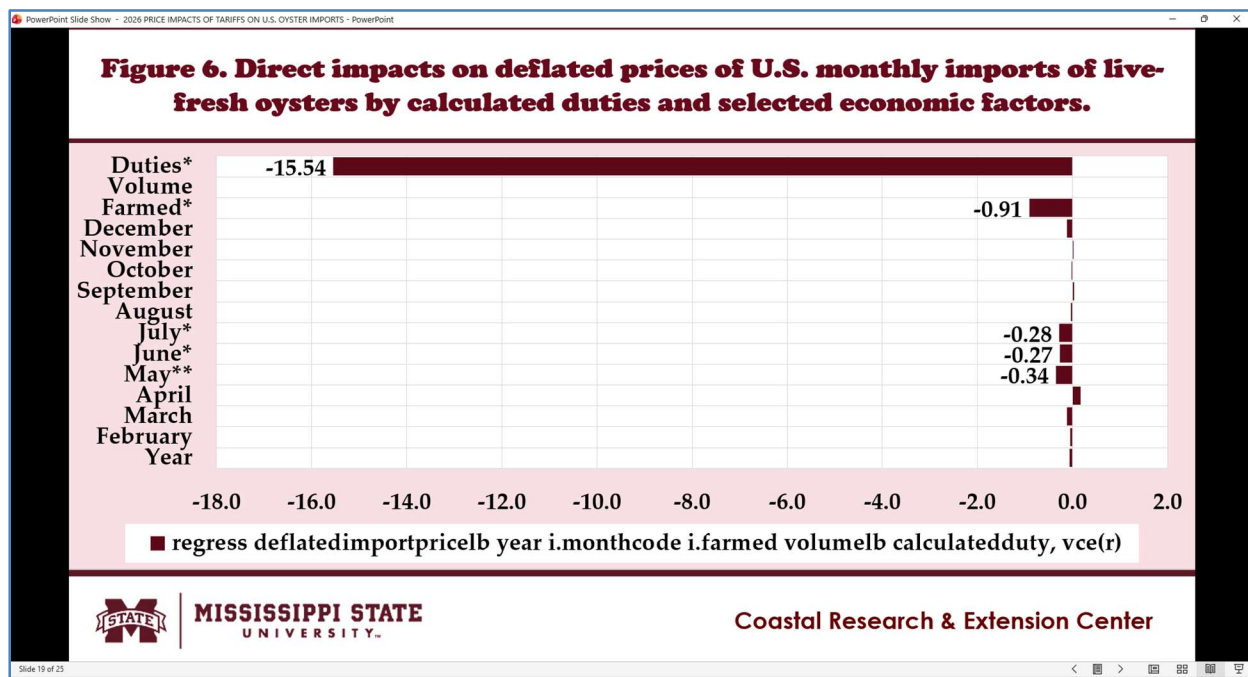
DIRECT IMPACTS ON DEFLATED PRICES OF U.S. MONTHLY IMPORTS OF FROZEN OYSTERS

- Figure 5 shows the direct impacts on deflated prices of U.S. monthly imports of frozen oysters by calculated duties and selected economic factors.
- Three factors exerted significant impacts on the deflated prices of U.S. monthly imports of frozen oysters.
- The deflated prices of U.S. monthly imports of frozen oysters were significantly declining over time.
- Significantly higher deflated prices of U.S. monthly imports of frozen oysters were observed in October.
- The deflated prices of U.S. monthly imports of farmed frozen oysters were significantly lower than the wild frozen oysters.
- Calculated duties have negative but insignificant effects on deflated prices of U.S. monthly imports of frozen oysters.



DIRECT IMPACTS ON DEFLATED PRICES OF U.S. MONTHLY IMPORTS OF LIVE-FRESH OYSTERS

- Figure 6 shows the direct impacts on deflated prices of U.S. monthly imports of live-fresh oysters by calculated duties and selected economic factors.
- Five factors exerted significant impacts on the deflated prices of U.S. monthly imports of live-fresh oysters.
- Significantly lower deflated prices of U.S. monthly imports of live-fresh oysters were observed in May, June, and July.
- The deflated prices of U.S. monthly imports of farmed live-fresh oysters were significantly lower than the wild live-fresh oysters.
- Calculated duties have negative and significant effects on deflated prices of U.S. monthly imports of live-fresh oysters.



SUMMARY, LIMITATIONS, AND IMPLICATIONS

- U.S. imports of frozen oysters consisted of frozen farmed oysters and frozen wild oysters.
- Frozen farmed oyster imports were subjected to calculated duties starting in April 2025.
- Calculated duties were imposed on frozen wild oyster imports starting February 2025.
- U.S. imports of live/fresh oysters consisted of live/fresh farmed oysters and live/fresh wild oysters.
- Live/Fresh farmed oysters imports were subjected to calculated duties starting in June 2025.
- Calculated duties were imposed on live/fresh wild oyster imports starting May 2025.
- Three factors exerted significant impacts on the deflated prices of U.S. monthly imports of frozen oysters.
- The deflated prices of U.S. monthly imports of frozen oysters were significantly declining over time.
- Significantly higher deflated prices of U.S. monthly imports of frozen oysters were observed in October.
- The deflated prices of U.S. monthly imports of farmed frozen oysters were significantly lower than the wild frozen oysters.
- Calculated duties have negative but insignificant effects on deflated prices of U.S. monthly imports of frozen oysters.
- Five factors exerted significant impacts on the deflated prices of U.S. monthly imports of live-fresh oysters.
- Significantly lower deflated prices of U.S. monthly imports of live-fresh oysters were observed in May, June, and July.
- The deflated prices of U.S. monthly imports of farmed live-fresh oysters were significantly lower than the wild live-fresh oysters.
- Calculated duties have negative and significant effects on deflated prices of U.S. monthly imports of live-fresh oysters.

ACKNOWLEDGEMENTS

- This newsletter is a contribution of the Mississippi Agricultural and Forestry Experiment Station and the Mississippi State University Extension Service.
- This material is based on work supported in part by the National Institute of Food and Agriculture, U.S. Department of Agriculture, Hatch project under accession number 100004, and
- The Mississippi-Alabama Sea Grant Consortium, National Oceanic and Atmospheric Administration, U.S. Department of Commerce, and the states of Alabama and Mississippi. Federal grant number NA24OARX417C0155-T1-01.
- The statements, findings, conclusions, and recommendations are those of the authors and do not necessarily reflect the views of any of these funders.