

# PRODUCER REGISTRATION FORM

Farm/Business Name: \_\_\_\_\_

Primary Contact Person: \_\_\_\_\_

Mailing Address: \_\_\_\_\_

Physical Address of Farm  
(if different from address above): \_\_\_\_\_

County: \_\_\_\_\_

Primary Phone Number: \_\_\_\_\_

Secondary Phone Number: \_\_\_\_\_

Business Type: *(Check one)*

- Individual     Partnership     Incorporated  
 LLC     Other Business Type

Location Type: *(Check all that apply)*

- Farm     Clinic     Market  
 Exhibition     Other Operation Type

Species at Location: *(Check all that apply)*

- Cattle     Swine     Horses  
 Goats     Sheep     Other

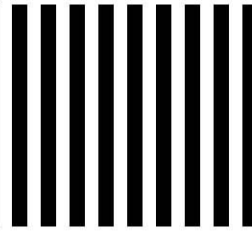
*If animals are located at different locations, then please apply for multiple producer registrations on additional forms.*



MISSISSIPPI  
**ANIMAL DISEASE  
AND DISASTER  
PREPAREDNESS**  
PROGRAM



NO POSTAGE  
NECESSARY  
IF MAILED  
IN THE  
UNITED STATES



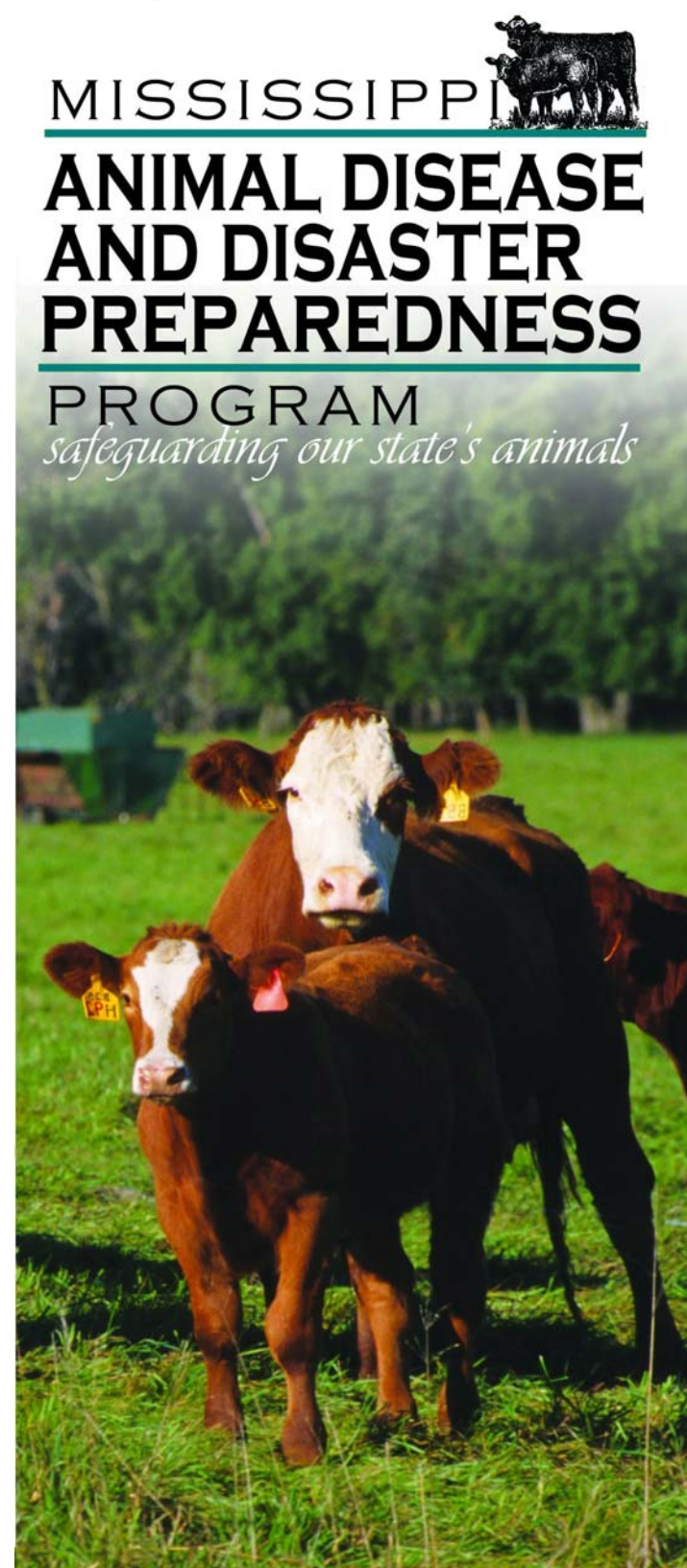
**BUSINESS REPLY MAIL**  
FIRST-CLASS MAIL    PERMIT NO. 74    JACKSON MS

POSTAGE WILL BE PAID BY ADDRESSEE

MISSISSIPPI BOARD OF ANIMAL HEALTH  
PO BOX 3889  
JACKSON MS 39207-9902



MISSISSIPPI   
**ANIMAL DISEASE  
AND DISASTER  
PREPAREDNESS**  
PROGRAM  
*safeguarding our state's animals*



# BE A PART OF THE SOLUTION

*Do your part to protect the health of Mississippi's livestock herds.*

It is very important that Mississippi livestock producers move forward as an industry to safeguard the health of our herds. The danger of a contagious disease outbreak in the national cow herd, whether by natural occurrence or terrorist attack, makes it imperative that the location of producers and their herds be readily available to animal health officials. Producer cooperation is essential for rapid disease response in the instance of a contagious disease outbreak.

Rapid response to disease events is critical to maintain the health of the state herd. Not only do certain diseases endanger the entire industry, they could cripple our nation's economy. Diseases such as Foot and Mouth Disease, Bovine TB or Johne's Disease have far-reaching potential for major economic impact on cattle producers. Quick and effective disease containment is vital for keeping a disease from affecting additional producers.

Enrollment in the program also gives animal health officials contact information to coordinate aid and relief efforts for natural disasters such as hurricanes. For example, ranchers with registered farms were called by the Colorado Department of Agriculture's State Veterinarian's Office during recent blizzards. Those phone calls helped locate animals and find out if they have had access to feed. Emergency hay drops then followed.

Similarly, a state-level animal disease and disaster preparedness program here at home will be invaluable when severe weather or other disasters in Mississippi threaten animal agriculture.

# HOW THE PROGRAM WORKS

*Step 1) Fill out a producer registration form.*

A producer registration form is included in this brochure. These forms are also available from the Mississippi Board of Animal Health. Filling out a producer registration form means making basic contact available to state animal health officials for use only in the event of an animal health emergency. An online version of the form is available at the following website: <http://www.mbah.state.ms.us/> The Mississippi State University Extension Service can assist producers in obtaining and filling out these forms as well.

*Step 2) Return your completed producer registration form to the State Veterinarian's office at the Mississippi Board of Animal Health.*

Completed producer registration forms can be mailed, faxed, e-mailed, or completed online. Contact information for the State Veterinarian's office is included on the producer registration form.

*Step 3) Receive your unique producer registration confirmation in the mail.*

A randomly generated unique producer registration number will be assigned to your producer registration form. You will receive a letter from the State Veterinarian's office confirming receipt of your producer registration information and notifying you of your producer registration. **In the event of an animal health emergency, this information will be used to rapidly respond to the emergency to protect your animals and Mississippi's livestock industries.** Otherwise, this basic contact information will sit in a database at the Mississippi Board of Animal Health.

# WHAT DO I NEED TO KNOW?

*What does it cost to sign up?*

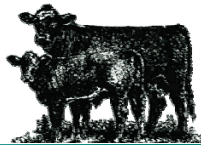
Enrollment in the program is **free of charge to Mississippi livestock producers.** The only cost is a few minutes of your time to complete the sign-up process. This is a small price to pay for protecting the health of animal agriculture in Mississippi.

*Why should I register my farm?*

In an animal health emergency, no one can help you protect your animals if they do not know you are there. This basic contact information opens the lines of communication between producers and animal health officials. Registering your farm means that you will be alerted quickly when there is a potential disease threat to your animals. You then have the information and assistance you need to take action and protect your animals and your investment.

*Where will the data be stored?*

The Mississippi Board of Animal Health will be responsible for keeping the data on file. The information provided as part of this state animal disease preparedness program will only be accessed on an as-needed basis in the event of an animal health emergency.



**MISSISSIPPI**  
**ANIMAL DISEASE**  
**AND DISASTER**  
**PREPAREDNESS**  
**PROGRAM**