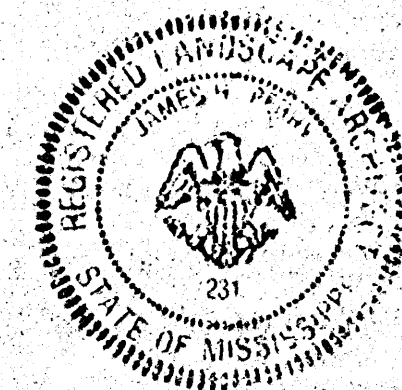
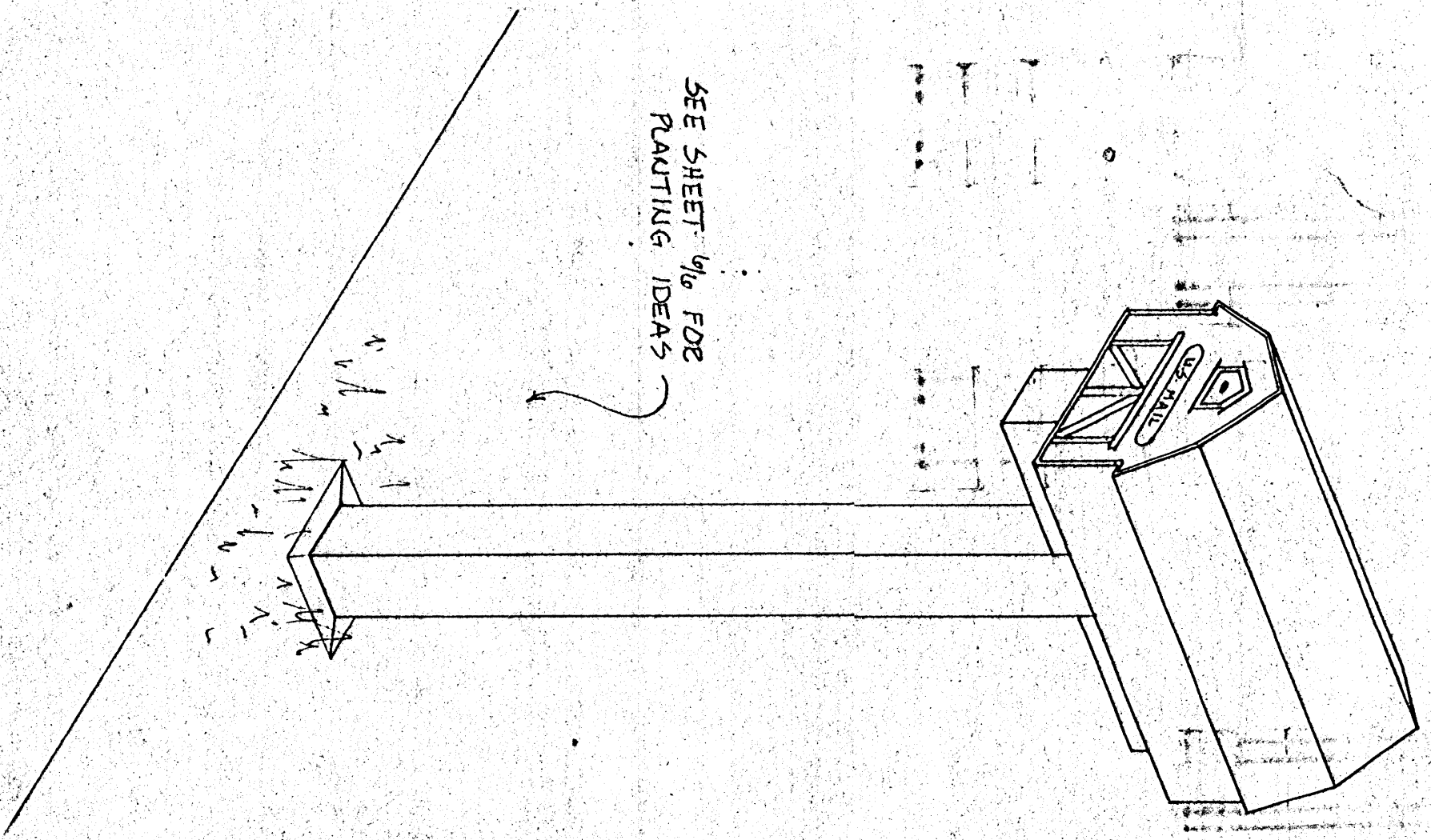


- MATERIALS LIST**
- | | | |
|--------------------|------------------------|--|
| LUMBER: | | HARDWARE: |
| 2PCS 4x4x6'11" | 3 CUT FROM 2PCS 4x4x8' | 4PCS 5/16x4 LG. CARRIAGE BOLTS W/ NUTS |
| 2PCS 4x4x2'6 9/16" | 3 CUT FROM 1PC 4x4x8' | 4PCS 5/16 DIA. STD. FLAT WASHERS |
| 4PCS 2x4x10'7 1/2" | 3 CUT FROM 1PC 2x4x8' | 10PCS 5/16x6 LAG SCREWS |
| | | 12PCS DIA 3 1" LENGTH WOOD SCREWS |

SCALE: 1/8" = 1"



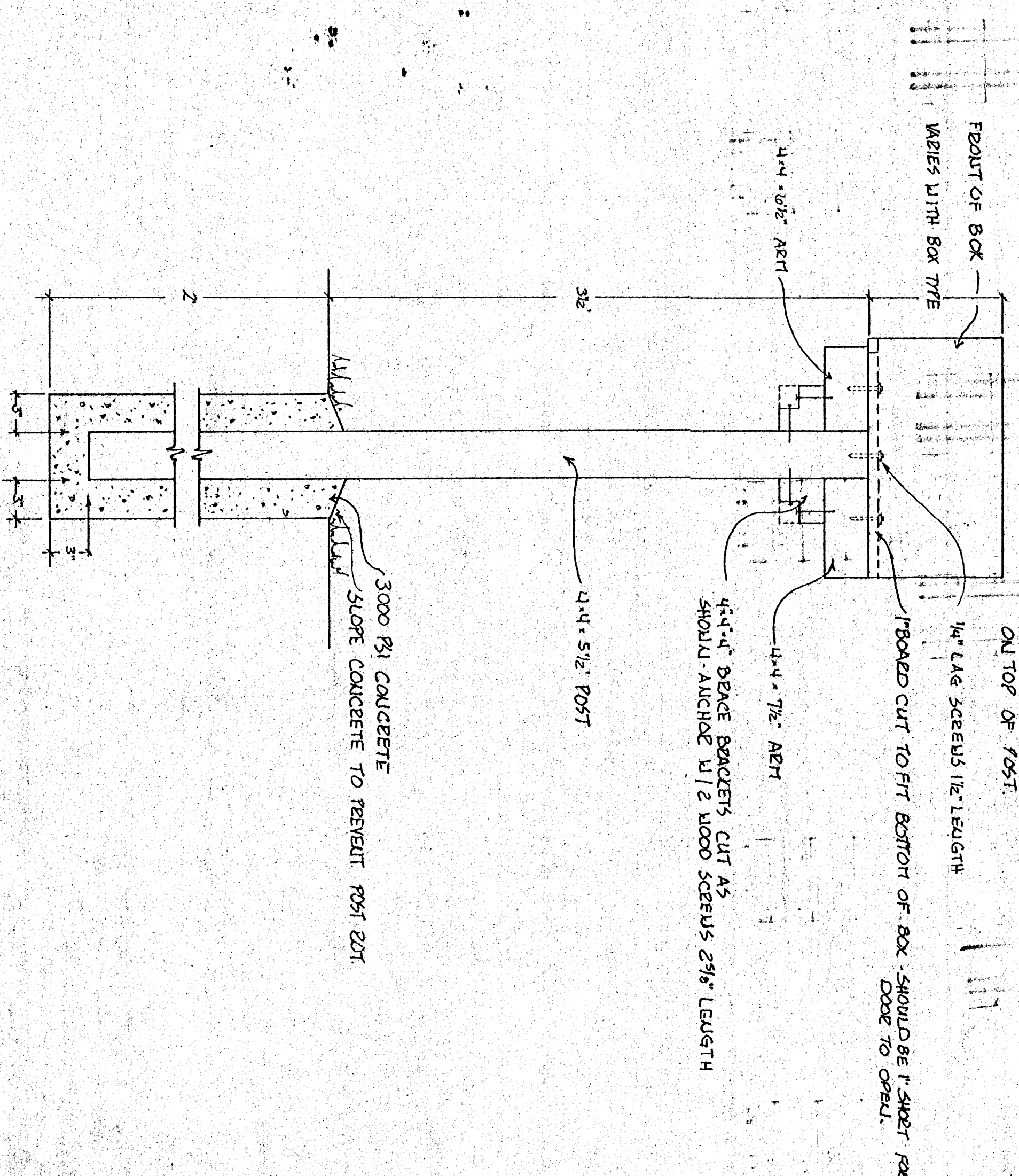
MAILBOX SERIES		PL. NO. 8216
DOUBLE MAILBOX		
MCS Mississippi Cooperative Extension Service Mississippi State University USDA and Counties Cooperating	DESIGN BY D. FILES	SHEET
	DRAWN BY D. FILES	1
	DATE 8/19/82	OF 6



MATERIALS LIST

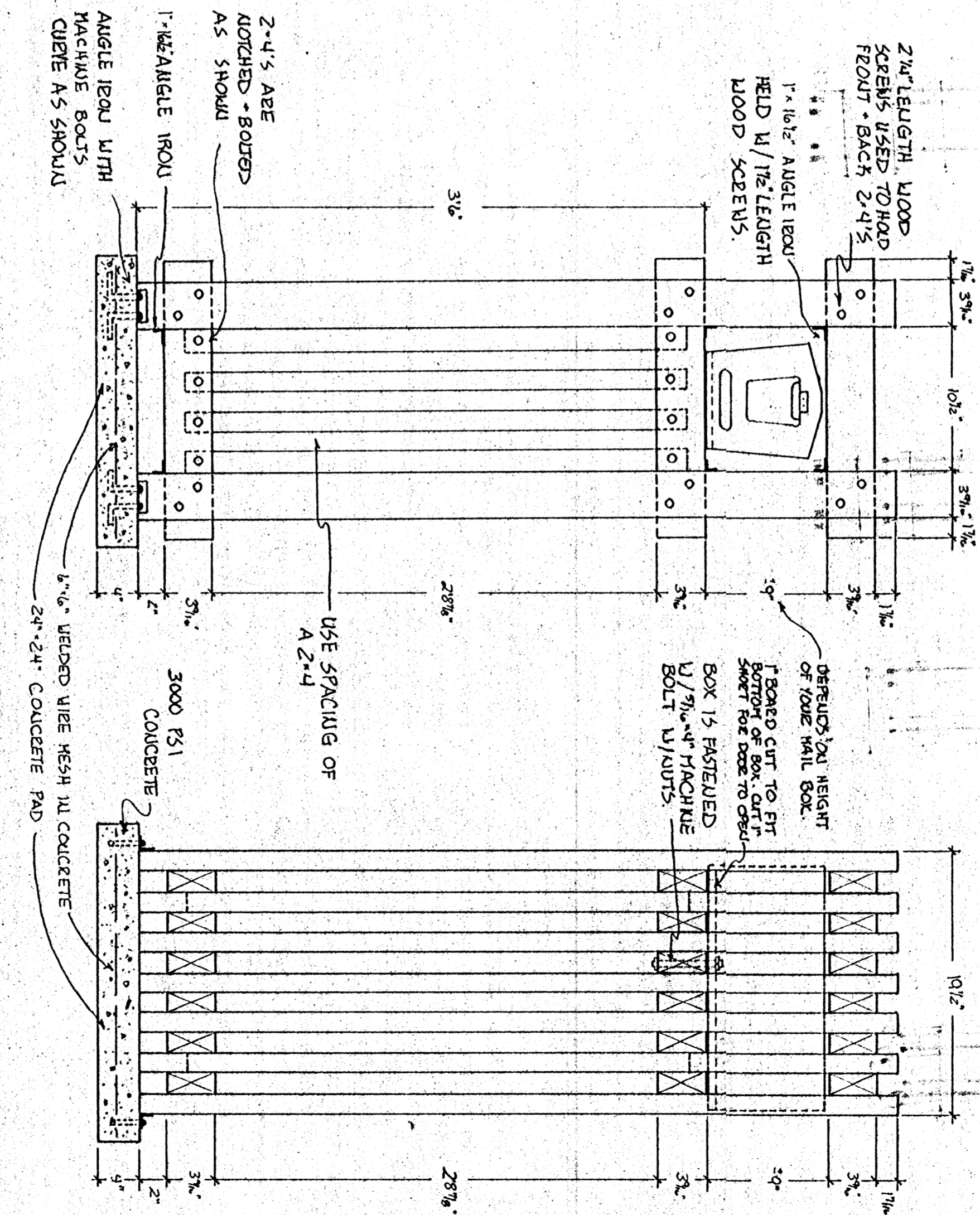
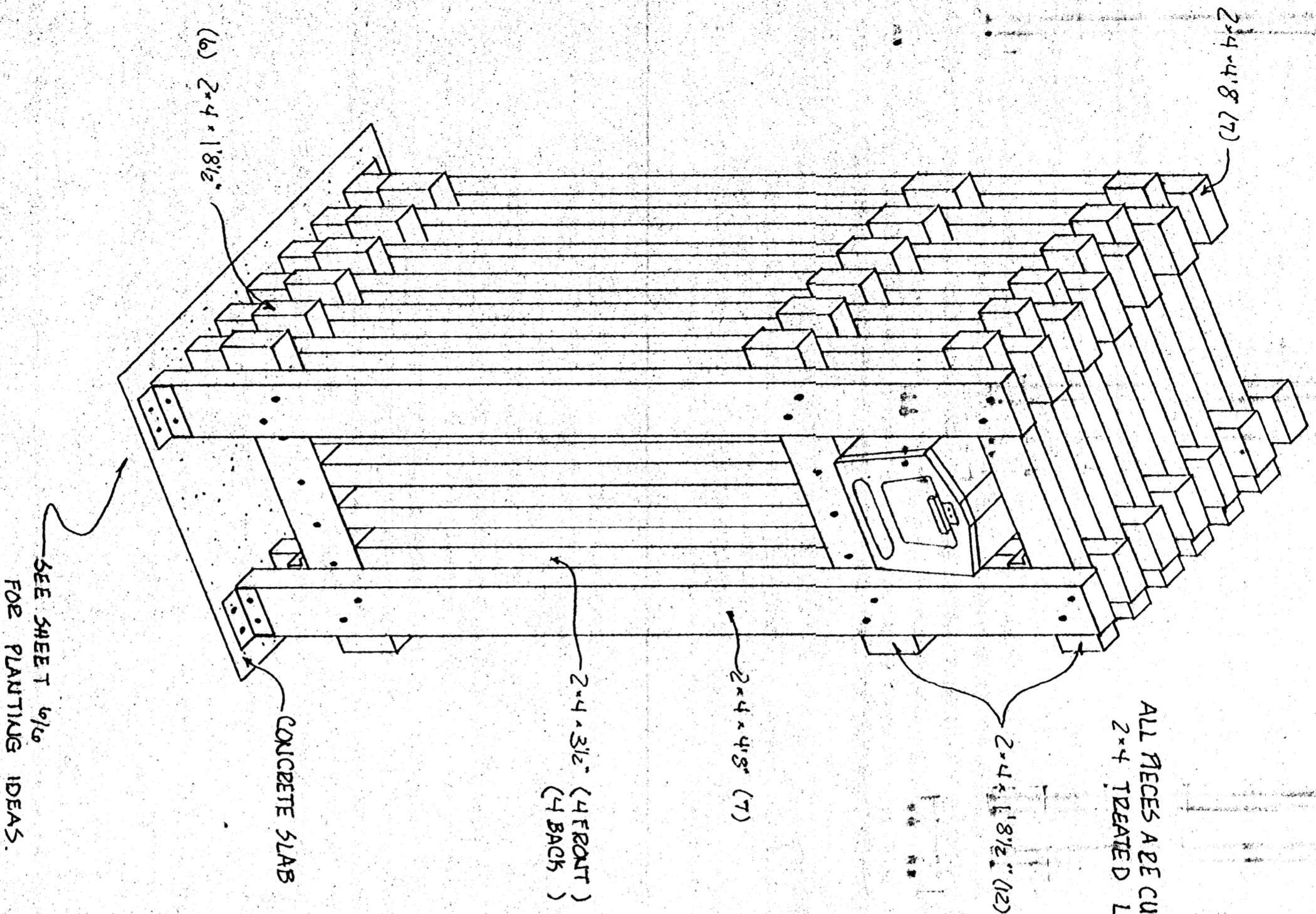
LUMBER:
 1PC 4x4-5.3' POST
 1PC 4x4-6.12' 2x4
 1PC 4x4-7.12' 2x4
 2PCS 4x4-4' BRACE

HARDWARE:
 3PCS 1/2" LAG SCREWS 12" LENGTH
 4PCS WOOD SCREWS 2 3/8" LENGTH



MAIL BOX SERIES		PL. NO. 82116
SINGLE MAIL BOX #1		
DESIGN BY D. FILES	SHEET	
DRAWN BY D. FILES	2	
DATE 8/1982	OF 6	

SCALE: 1/8" = 1'



- LUMBER:**
- 14 PCS 2x4x4'8"
 - 18 PCS 2x4x1'8 1/2"
 - 8 PCS 2x4x3'1 1/2"
- 3 CUT FROM 9PCS 2x4x12'
+ 1PC 2x4x8'

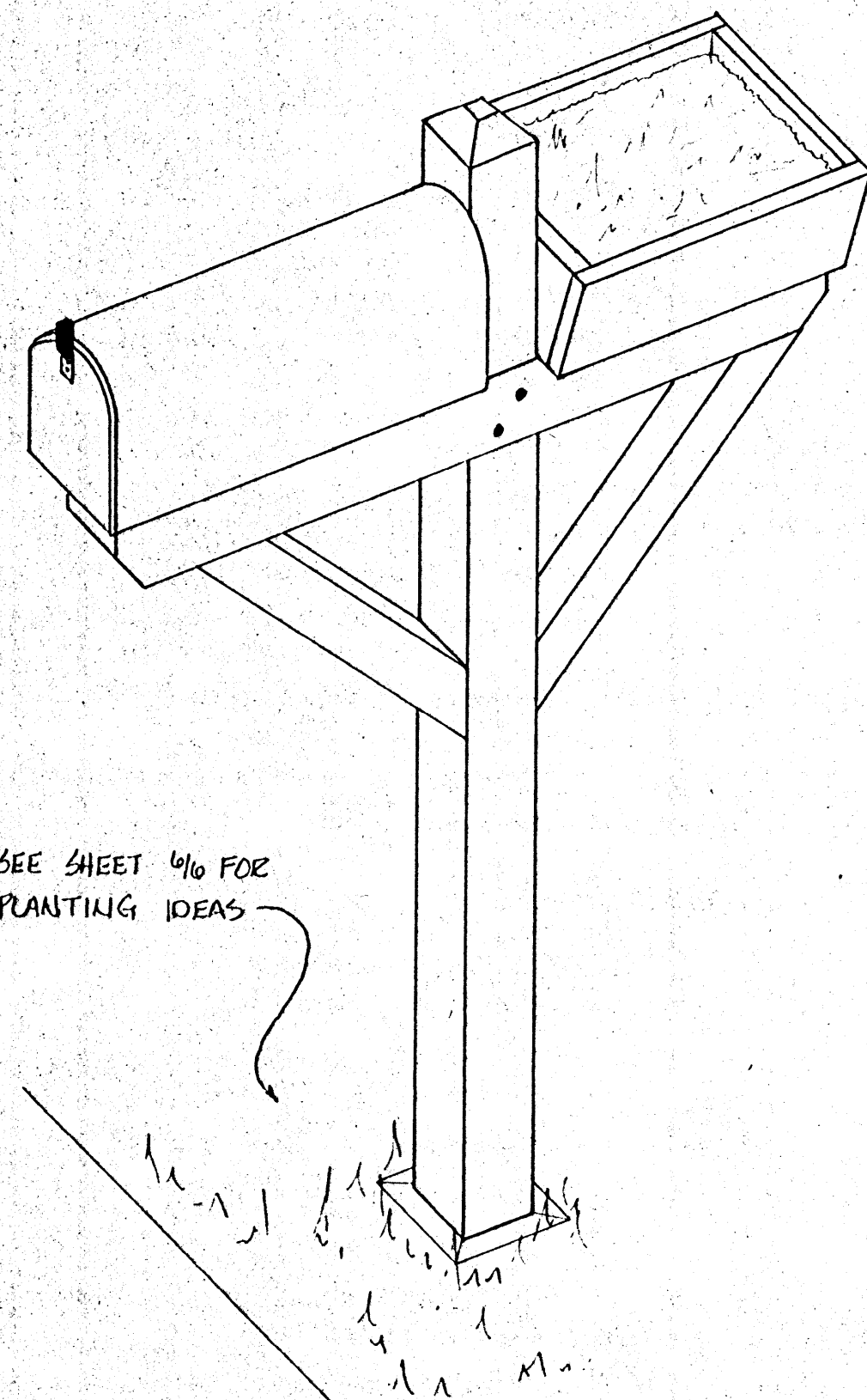
- HARDWARE:**
- 6 PCS 1" ANGLE IRON 1 1/2" LENGTHS
 - 6 PCS DIA 4, 1 1/2" LENGTH WOOD SCREWS
 - 16 PCS 5/16x4" CARRIAGE BOLTS W/ NUTS
 - 4 PCS 1" ANGLE IRON 2' LENGTHS
 - 8 PCS 3/8x6" MACHINE BOLTS W/ L SHAPED END
 - 1 PC 5/16x4" MACHINE BOLT W/ NUT
 - 26 PCS 5/16 DIA STD FLAT WASHERS
 - 24 PCS DIA 6, 2 1/2" LENGTH WOOD SCREWS
 - 1 PC 24x24" 6x6 WELDED WIRE MESH
 - 1 SACK CONCRETE MIX

MATERIALS LIST

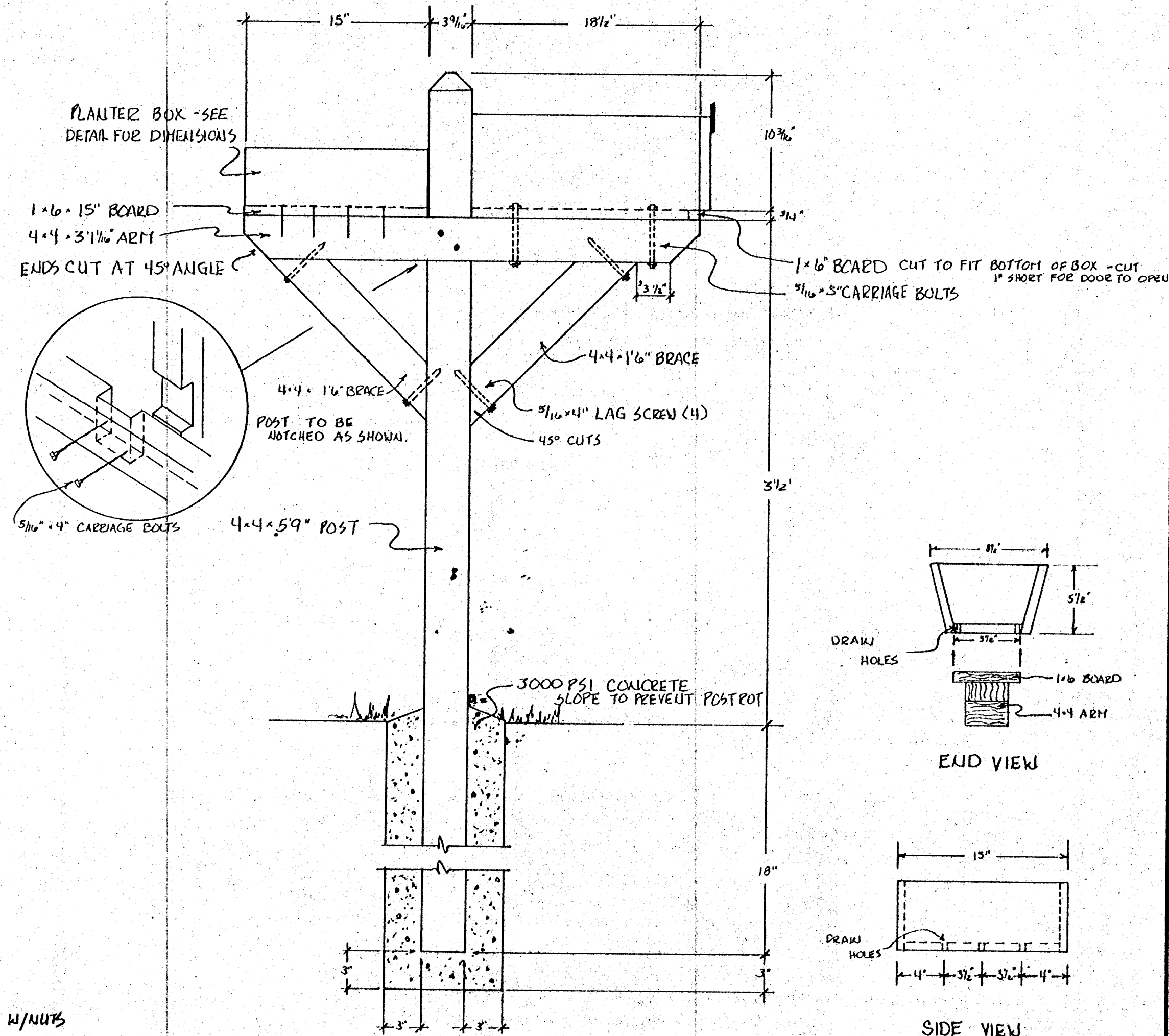
SCALE : 1 1/2" = 1'00"
WRITTEN DIMENSIONS PER MAIL



MAIL BOX SERIES		PL. NO. 8216
VANDAL PROOF MAIL BOX		
DESIGNED BY D. FILES	SHEET 3	
DRAWN BY D. FILES	OF 6	
DATE 8/1982		



SEE SHEET 6/10 FOR PLANTING IDEAS



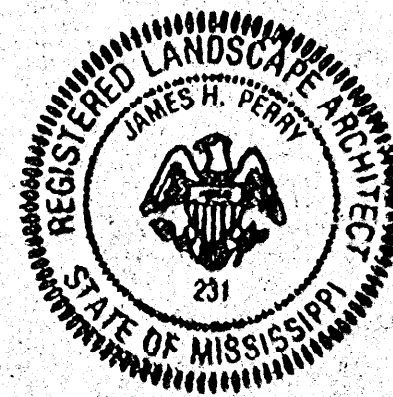
MATERIALS LIST

LUMBER:

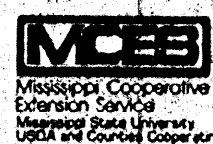
- 1PC 4x4x5 10" POST
 - 1PC 4x4x3 1/2" ARM
 - 2PC 4x4x1 1/2" BRACE
 - 1PC 1x6x3 1"
 - 2PC 1x6x15"
 - 2PC 1x6x8 1/2"
- CUT FROM 1PC 4x4x12'
- CUT FROM 1PC 1x6x8'

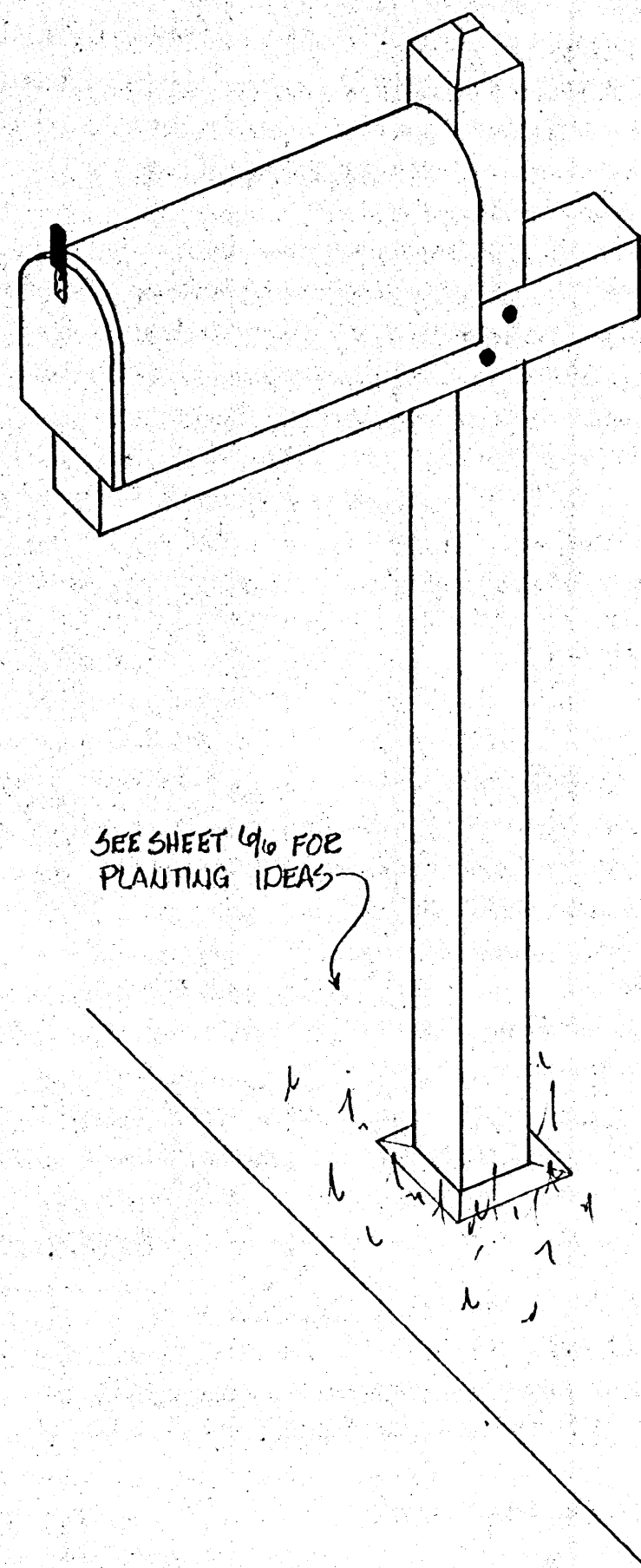
HARDWARE:

- 2PCS 5/16x4" LG CARRIAGE BOLTS W/NUTS
- 4PCS 5/16x4" LG LAG SCREWS
- 2PCS 5/16x5" LG CARRIAGE BOLTS W/NUTS
- 8PCS 5/16 DIA STD FLAT WASHERS
- 8PCS 8d COMMON NAILS
- 18PCS 6d FINISHING NAILS



MAIL BOX SERIES	PL. NO. 8216
PLANTER - MAILBOX	
DESIGN BY D. FILES	SHEET 4
DRAWN BY D. FILES	OF 6
DATE 8/1982	

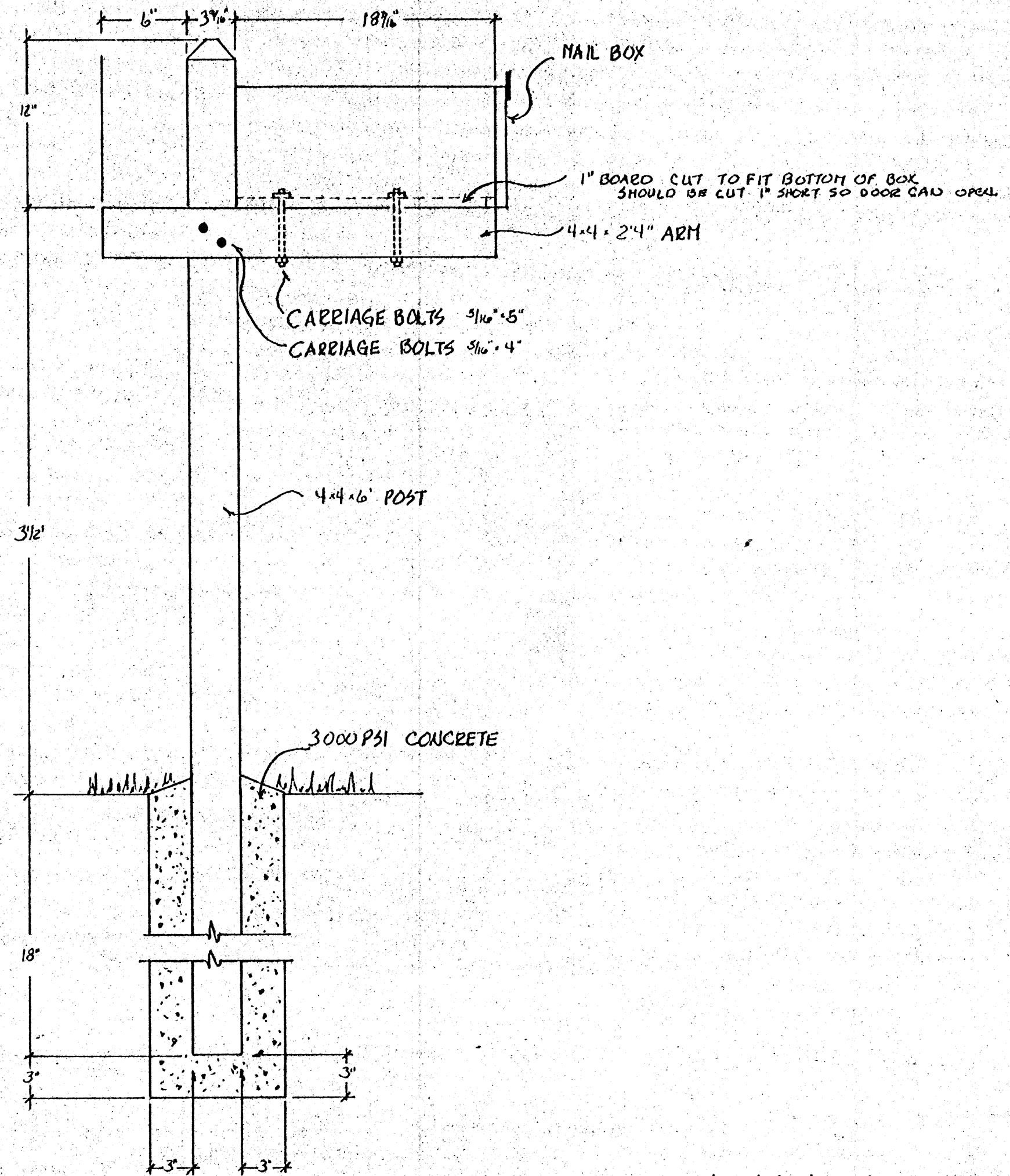




LUMBER:
 1PC 4x4x6' POST
 1PC 4x4x2'4" ARM

MATERIAL LIST
 } CUT FROM 2PCS 4x4x8'

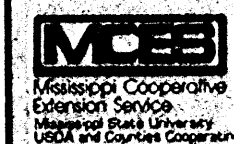
HARDWARE:
 2PCS 5/16x4" LG. CARRIAGE BOLTS W/NUTS
 2PCS 5/16x5" LG. CARRIAGE BOLTS W/NUTS
 8PCS 5/16 DIA STD FLAT WASHERS

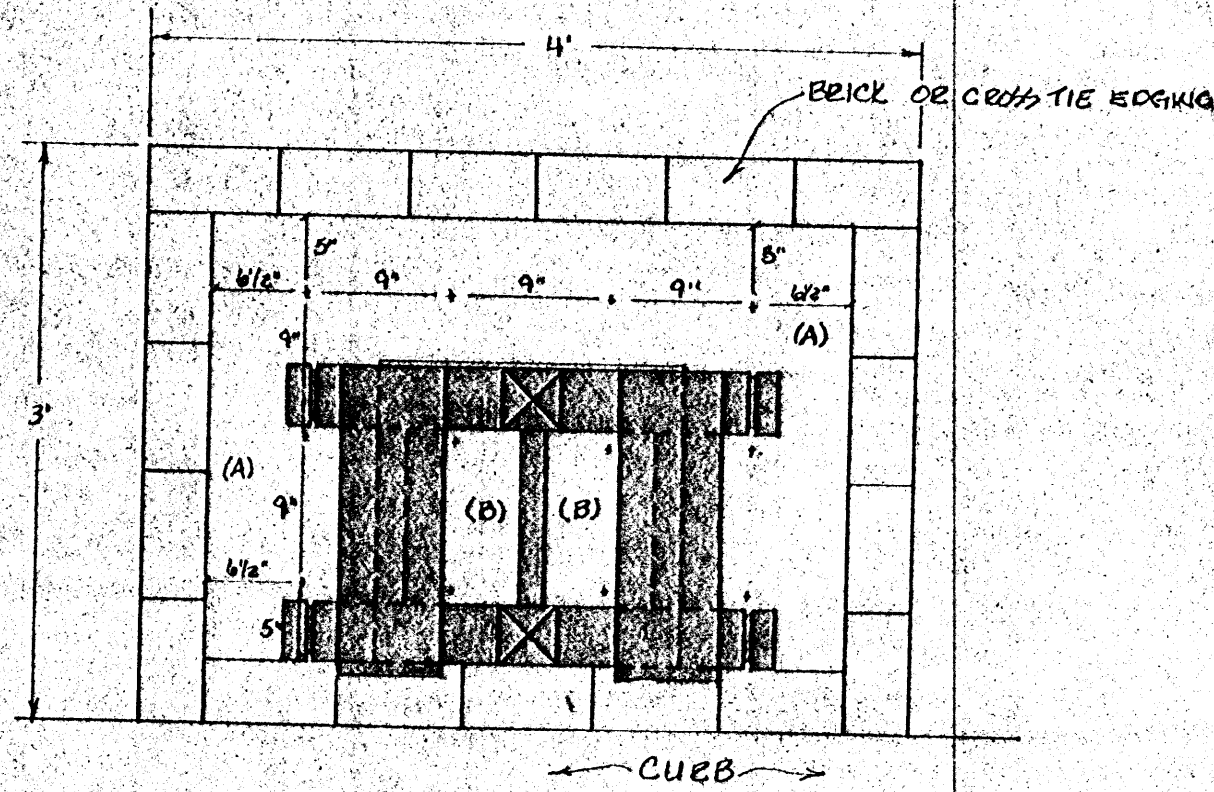


SCALE: 1/8" = 1"

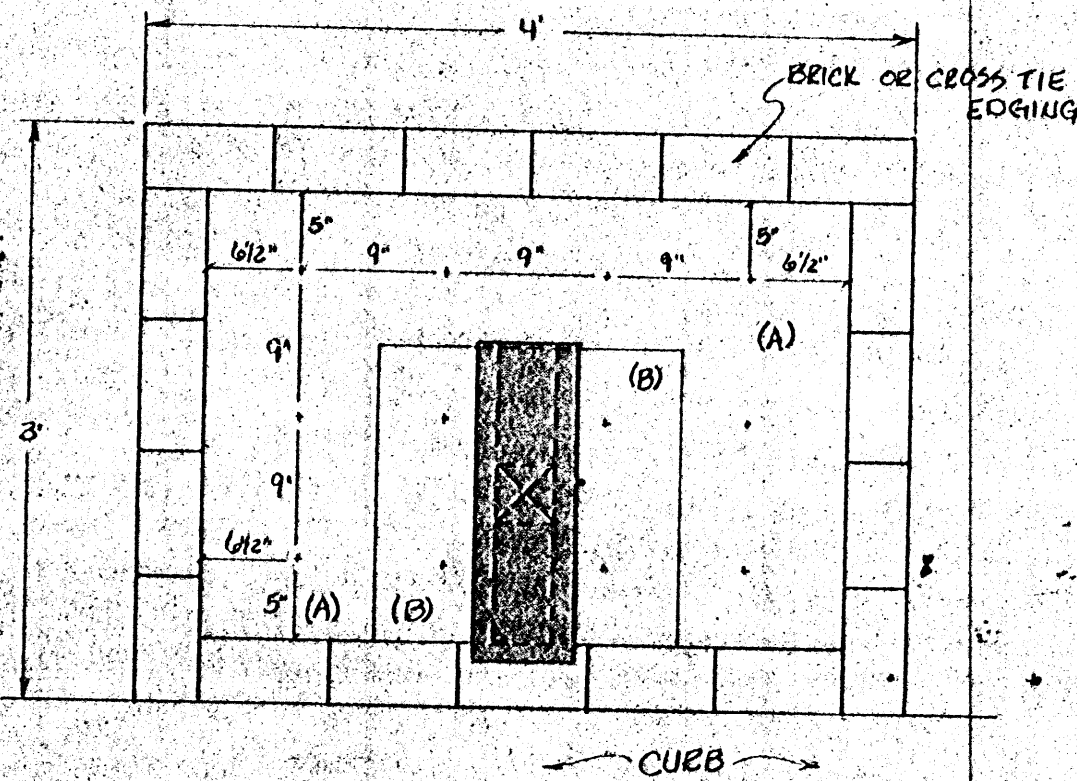


MAIL BOX SERIES	PL. NO. 8216
SINGLE MAILBOX # 2	
DESIGN BY D. FILES	SHEET 5
DRAWN BY D. FILES	OF 6
DATE 8/1982	

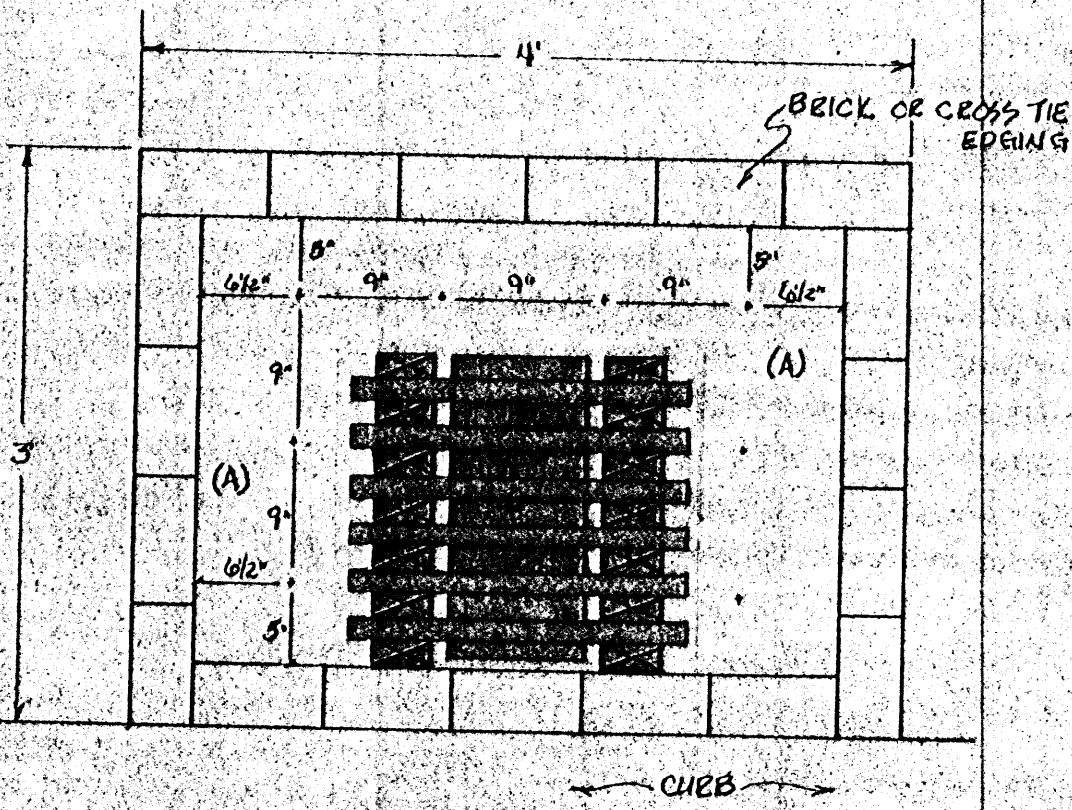




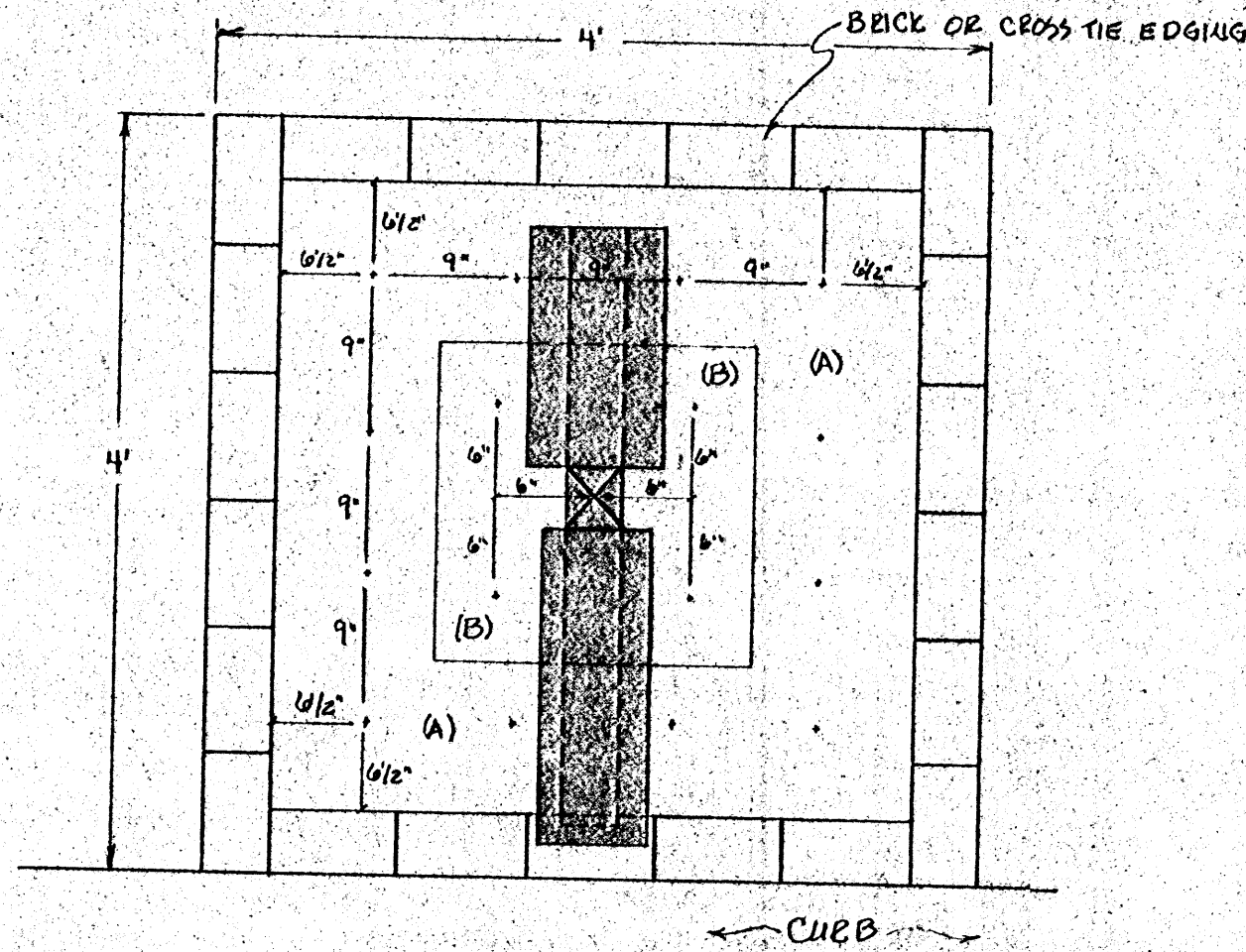
PLANTING FOR DOUBLE MAIL BOX



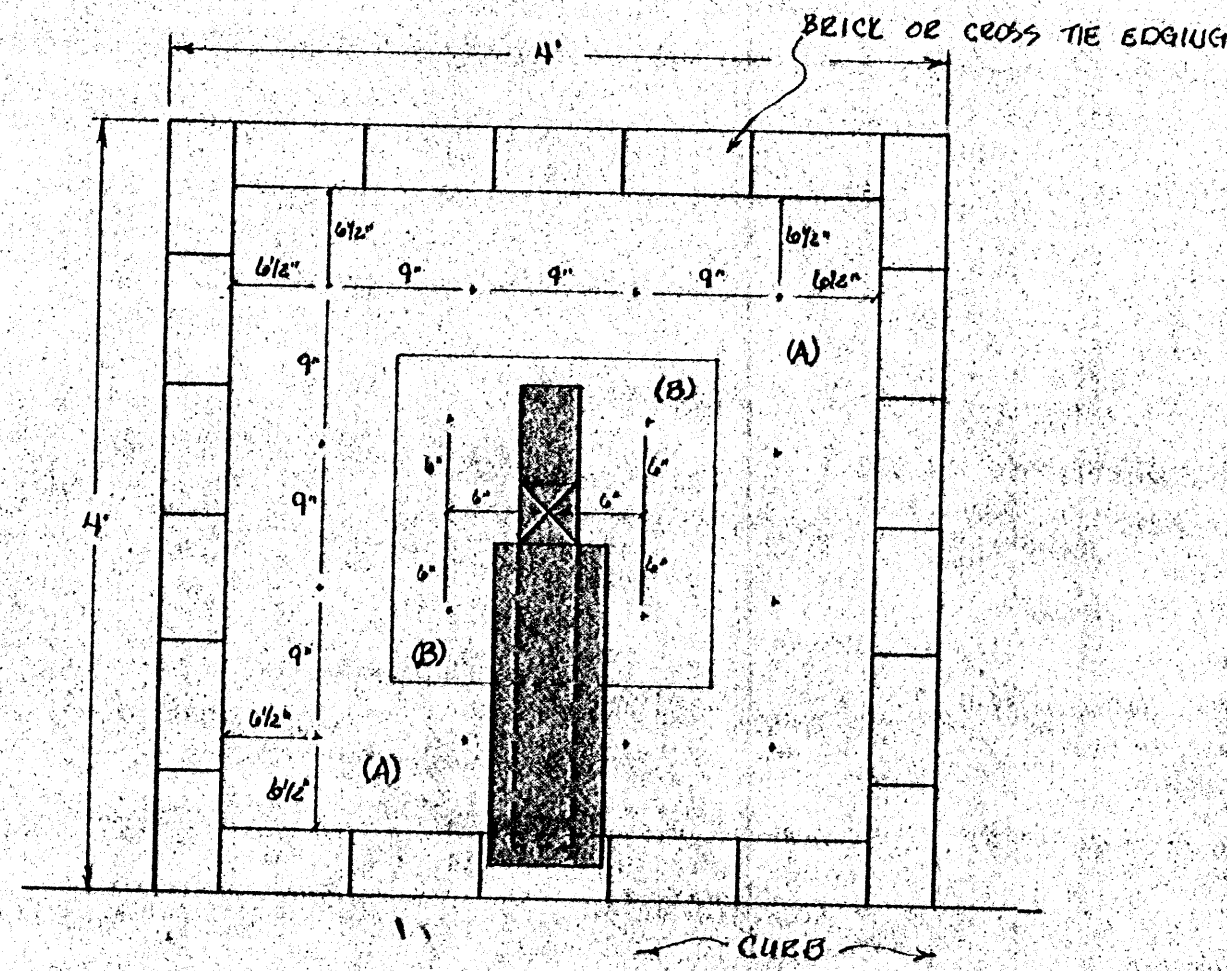
PLANTING FOR SINGLE MAIL BOX #1



PLANTING FOR VANDAL PROOF BOX



PLANTING FOR PLANTER-MAIL BOX



PLANTING FOR SINGLE MAILBOX #2

PLANT LIST

For Sun:

PLANT KEY	PLANT NAME
A	LIRIOPE MUSCARI - MONKEY GRASS
B	HARIGOLDS OR SALVIA
*C	LONICERA SEMPERVIRENS - TRUMPET HONEYSUCKLE OR GELSEMIUM SEMPERVIRENS - CAROLINA JESSAMINE

For Shade:

PLANT KEY	PLANT NAME
A	LIRIOPE MUSCARI - MONKEY GRASS
B	SWEET VIOLETS OR PETUNIAS
*C	TRACHELOSPERMUM JASMINEOIDES CU. CONFEDERATE JASMINE OR HEDERA HELIX GOLD DUST - ENGLISH IVY 'GOLD DUST'

* PLANT IN SAME LOCATION AS AREA B BUT PLANT ONLY 2 OF 4 SHOWN.



PLAN VIEW OF DIFFERENT MAIL BOXES



PLANTING DESIGN + SPACING		PL. NO. 8216
PLANTING IDEAS FOR MAILBOX SERIES		
DESIGN BY D. FILES	SHEET 6	
DRAWN BY D. FILES	OF 6	
DATE 1982		

