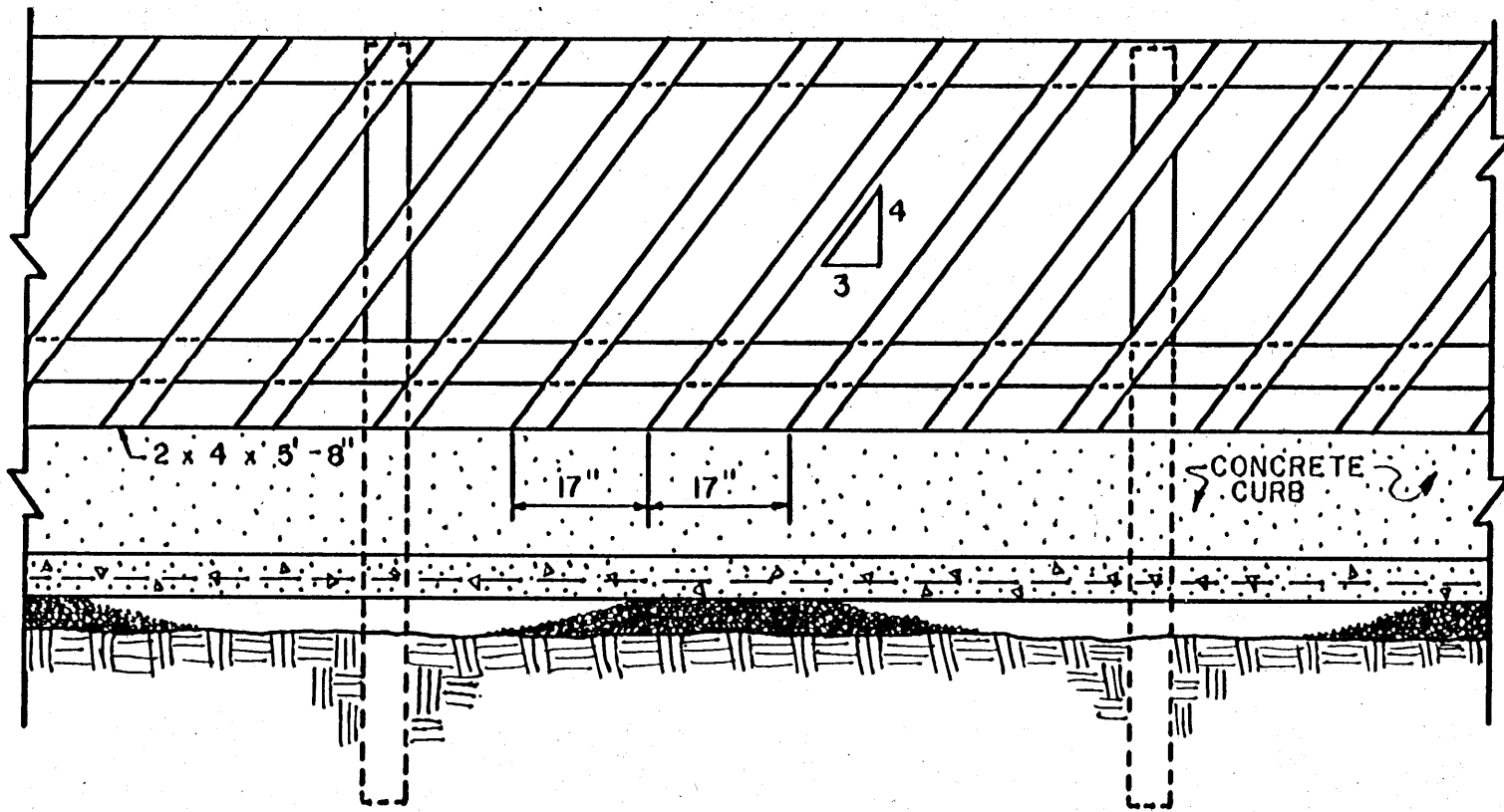
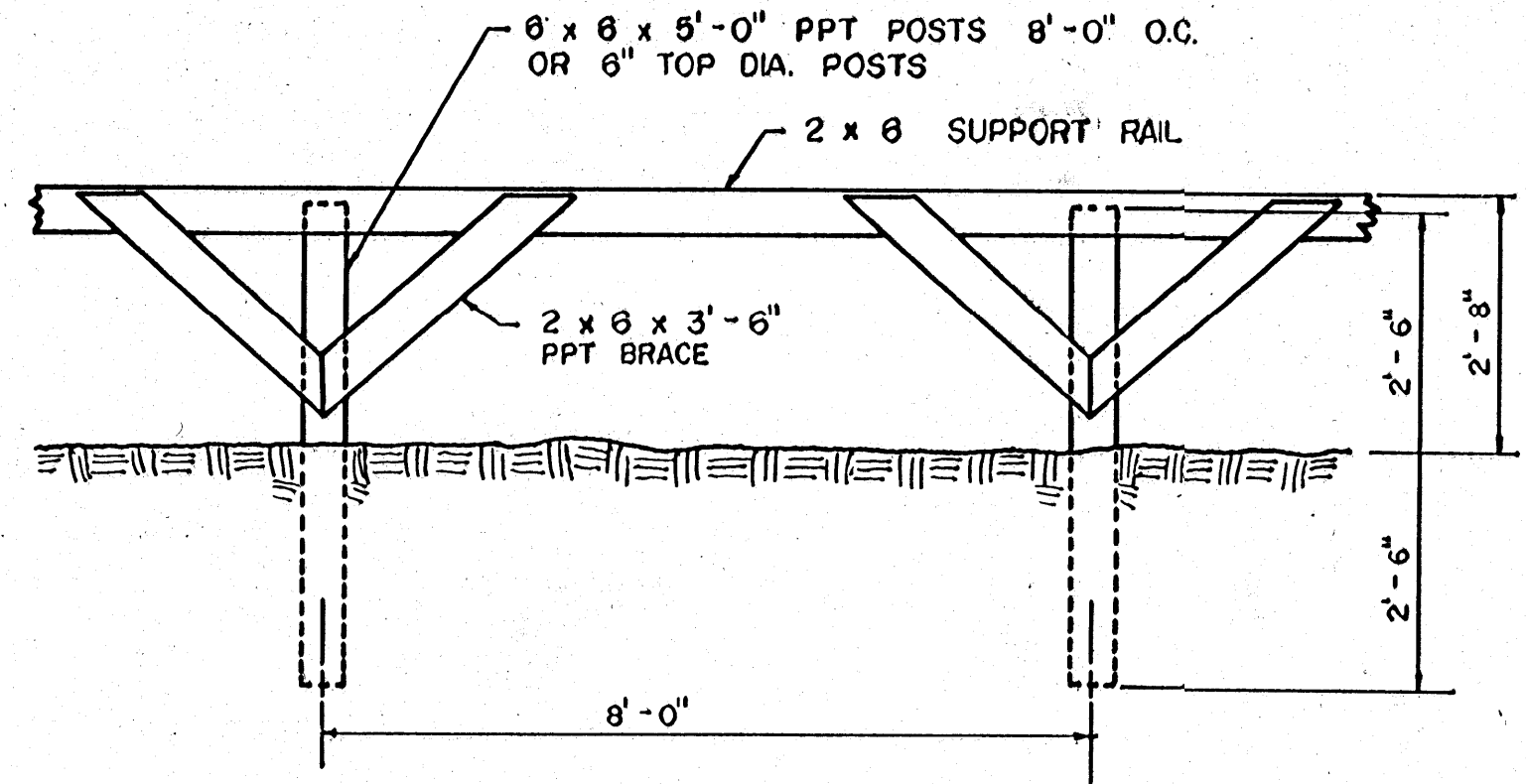


DIMENSIONS IN THE OPTIONAL FRONT VIEW ARE THE SAME AS IN THE FRONT VIEW UNLESS OTHERWISE NOTED.

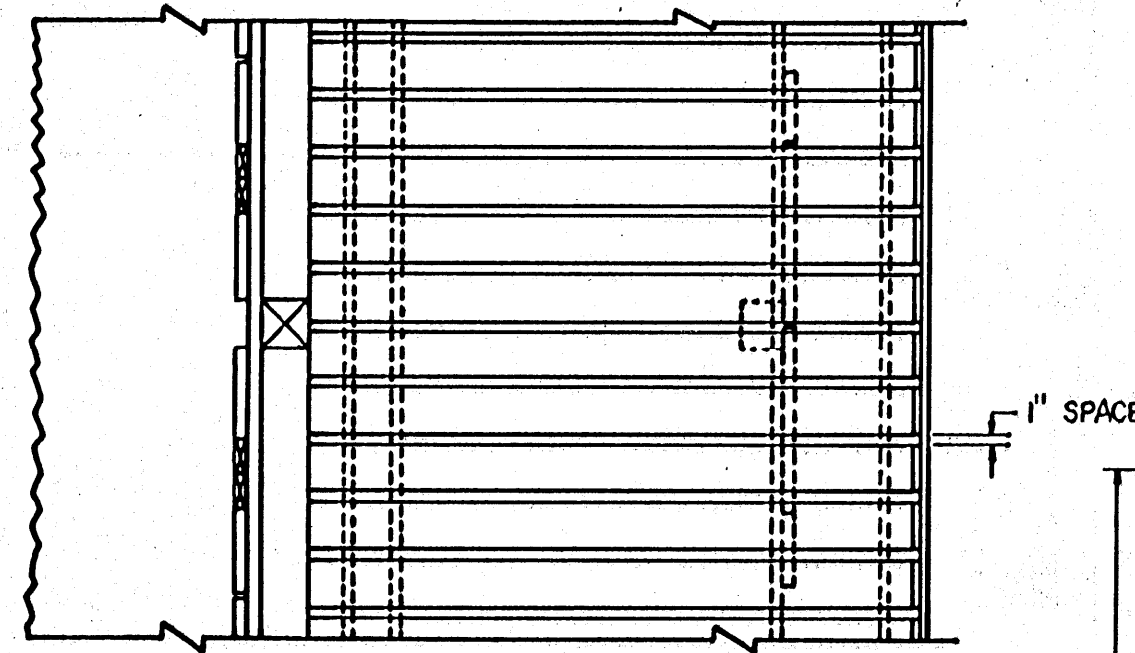


FRONT VIEW (OPTIONAL - W/ SLANTED STANCHION)

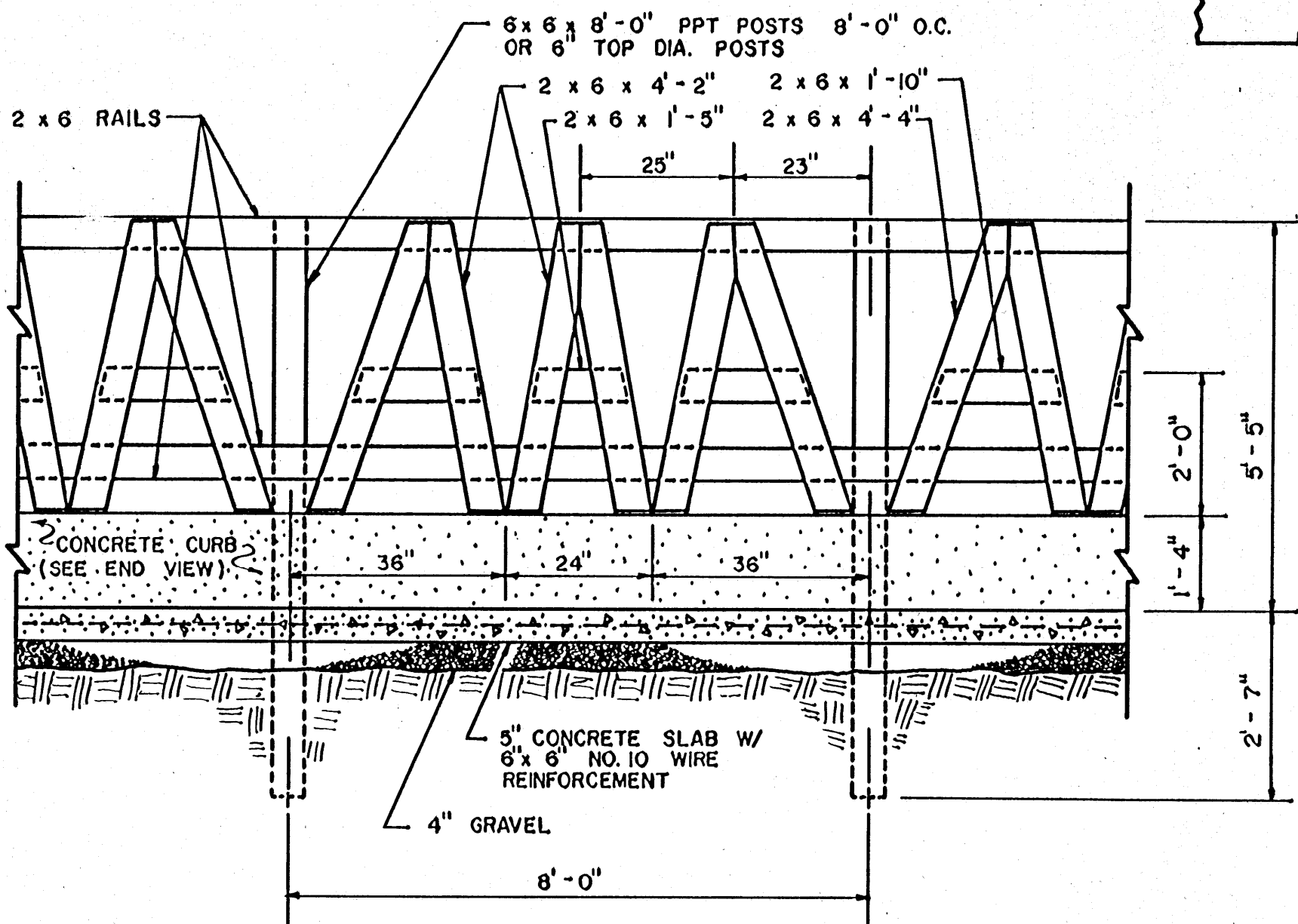


REAR VIEW - POST & BRACE DETAILS FOR MANGER PLATFORM

12' 6" 0' 1' 2' SCALE 1/2" = 1'-0"

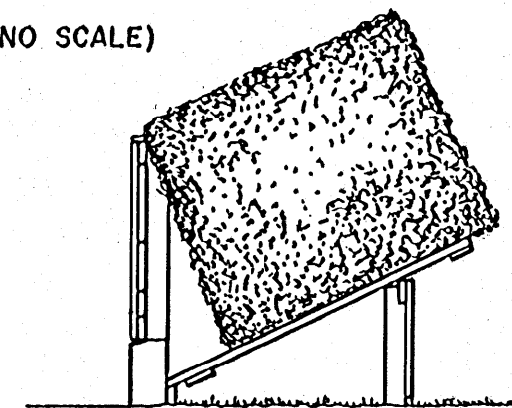


TOP VIEW

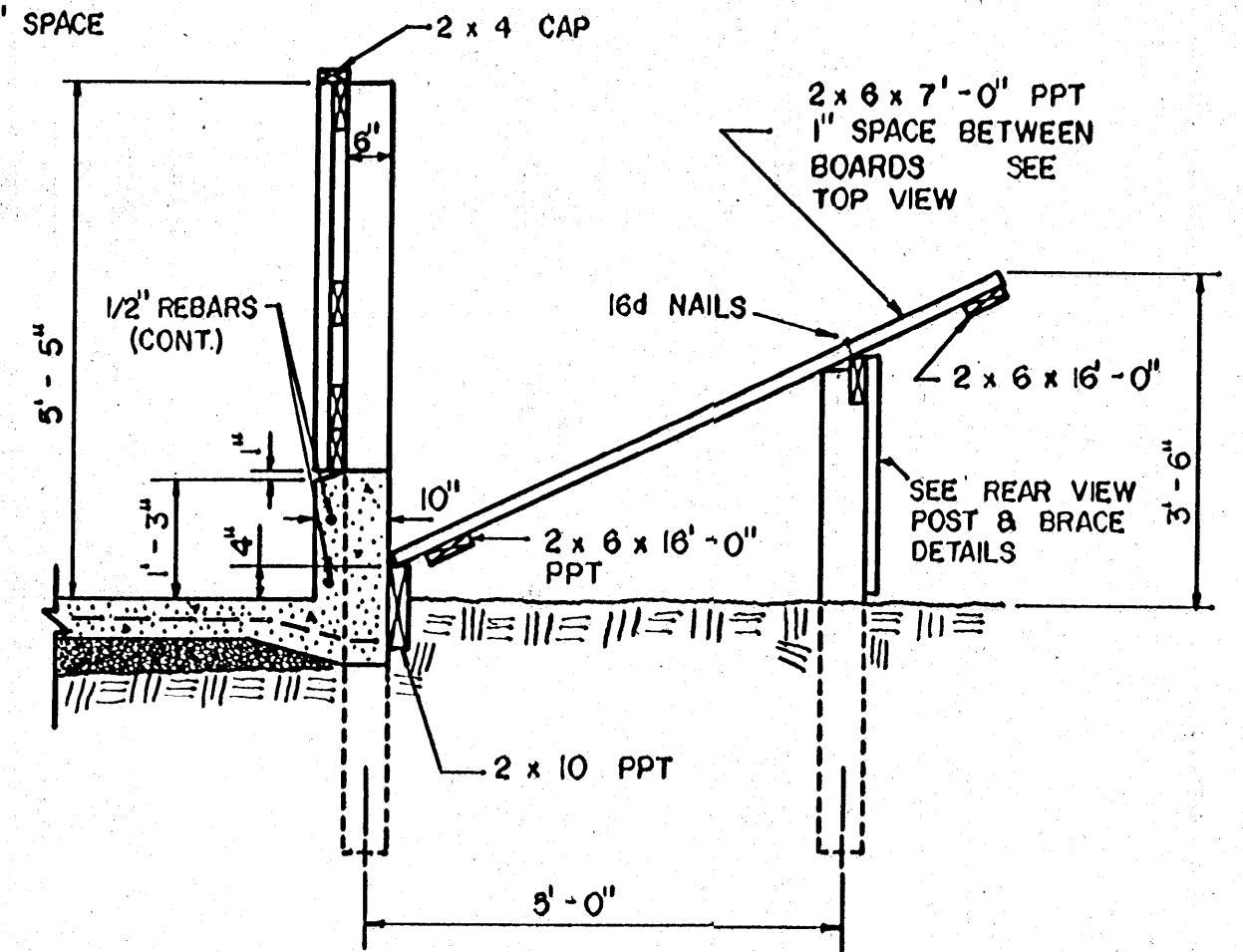


FRONT VIEW

(NO SCALE)



ONE BALE PER 8' SECTION



END VIEW

NOTES:

1. USE HOT DIPPED GALVANIZED POLE BUILDING NAILS ON ALL PPT (PRESSURE PRESERVATIVE TREATED) LUMBER.
2. PROVIDE 30# ROOFING FELT AROUND POSTS WHERE CONTACT IS MADE WITH CONCRETE.
3. INSTALL POSTS BEFORE CONCRETE CURB. PLACE CONTINUOUS REBARS IN 4" SECTION ON COW SIDE OF POSTS.
4. SLOPE CONCRETE FLOOR 3/4"-1"/FT. TO PROVIDE DRAINAGE AWAY BUNK.

| | | |
|---|------|--------------|
| COOPERATIVE EXTENSION SERVICE AGRICULTURE AND HOME ECONOMICS | | |
| AND UNITED STATES DEPARTMENT OF AGRICULTURE COOPERATING | | |
| SELF FEEDING HAY BUNK | | |
| W. VA '87 | 6385 | SHEET 1 OF 1 |