

NOTE:
ALL POLES ARE C.P.T.
(CREO. PRESSURE TREATED)

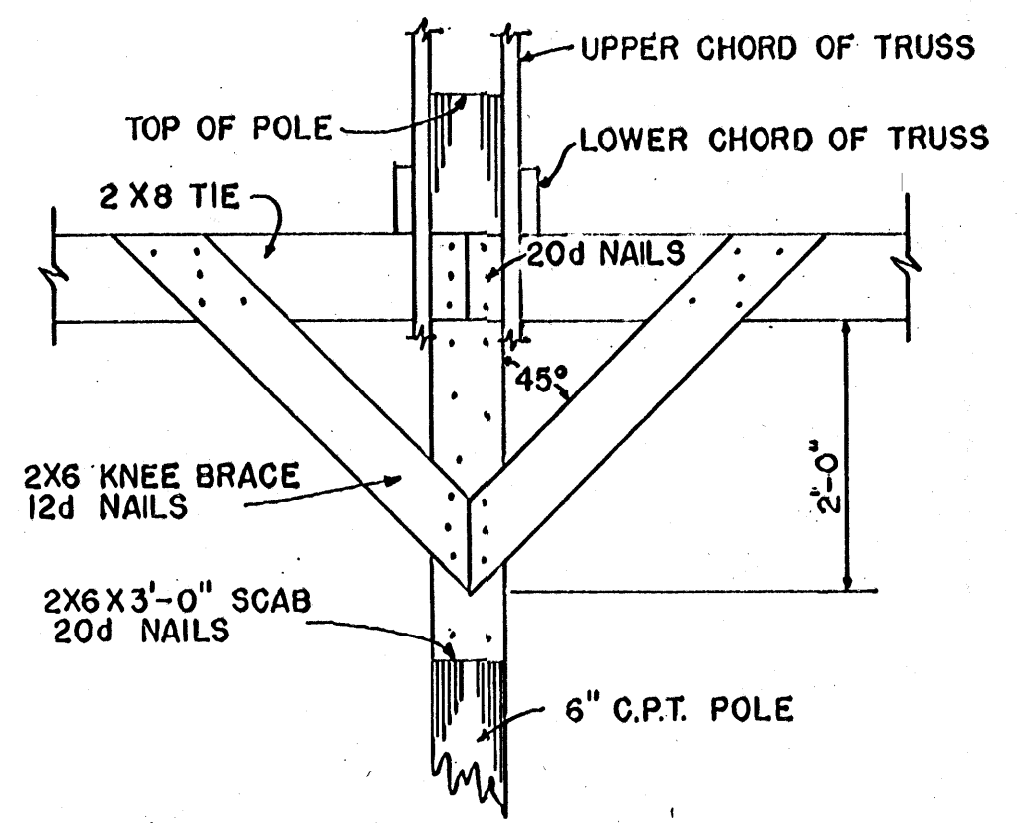
○ = 4" DIA. X 5'-0" POLES 2'-6" BELOW SURFACE

IF DRIVE THROUGH IS DESIRED, OMIT INTERMEDIATE SIDE POST AND SIDE WALL.

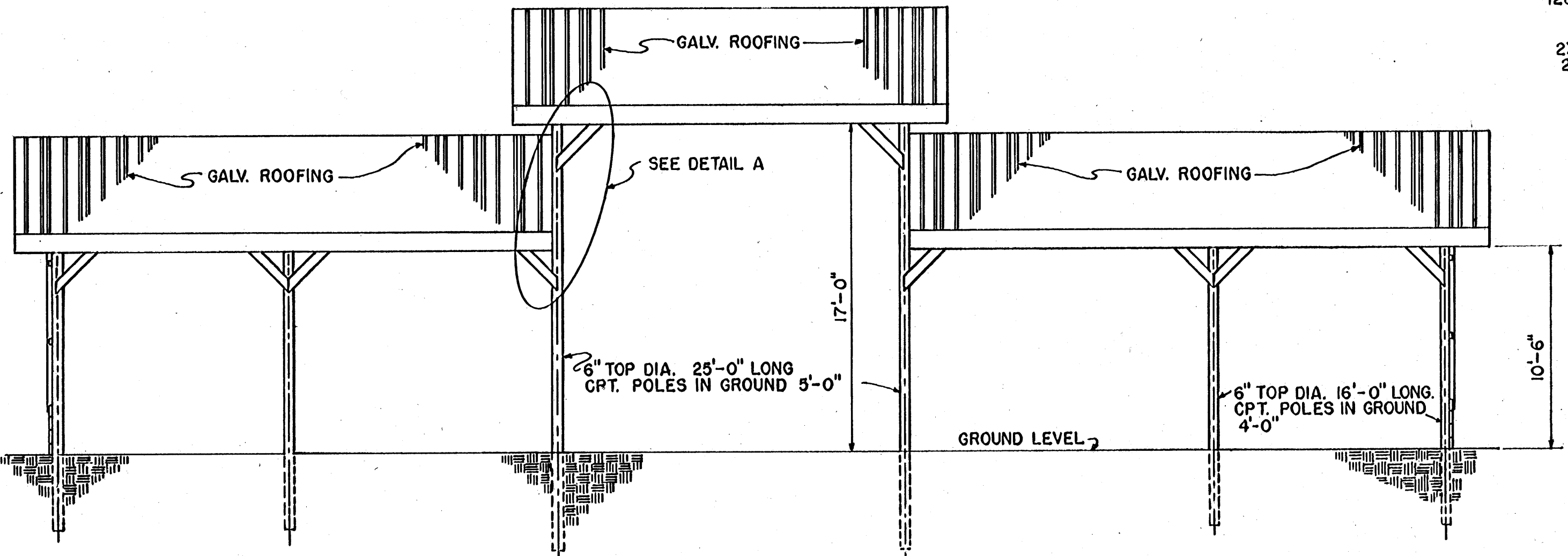
NOTE:
END WALLS CAN BE OMITTED FOR STORAGE OF WIDER THAN 12'-0" IMPLEMENTS.

POLE ON BOTH ENDS ARE THE SAME.

FLOOR PLAN



KNEE BRACE DETAIL
SCALE: 3/4" = 1'-0"



FRONT ELEVATION

NOTE: CONSULT LOCAL HEALTH AND BUILDING CODE AUTHORITIES BEFORE STARTING CONSTRUCTION.

SCALE: 3/6" = 1'-0" UNLESS OTHERWISE NOTED.

COOPERATIVE EXTENSION WORK IN AGRICULTURE AND HOME ECONOMICS

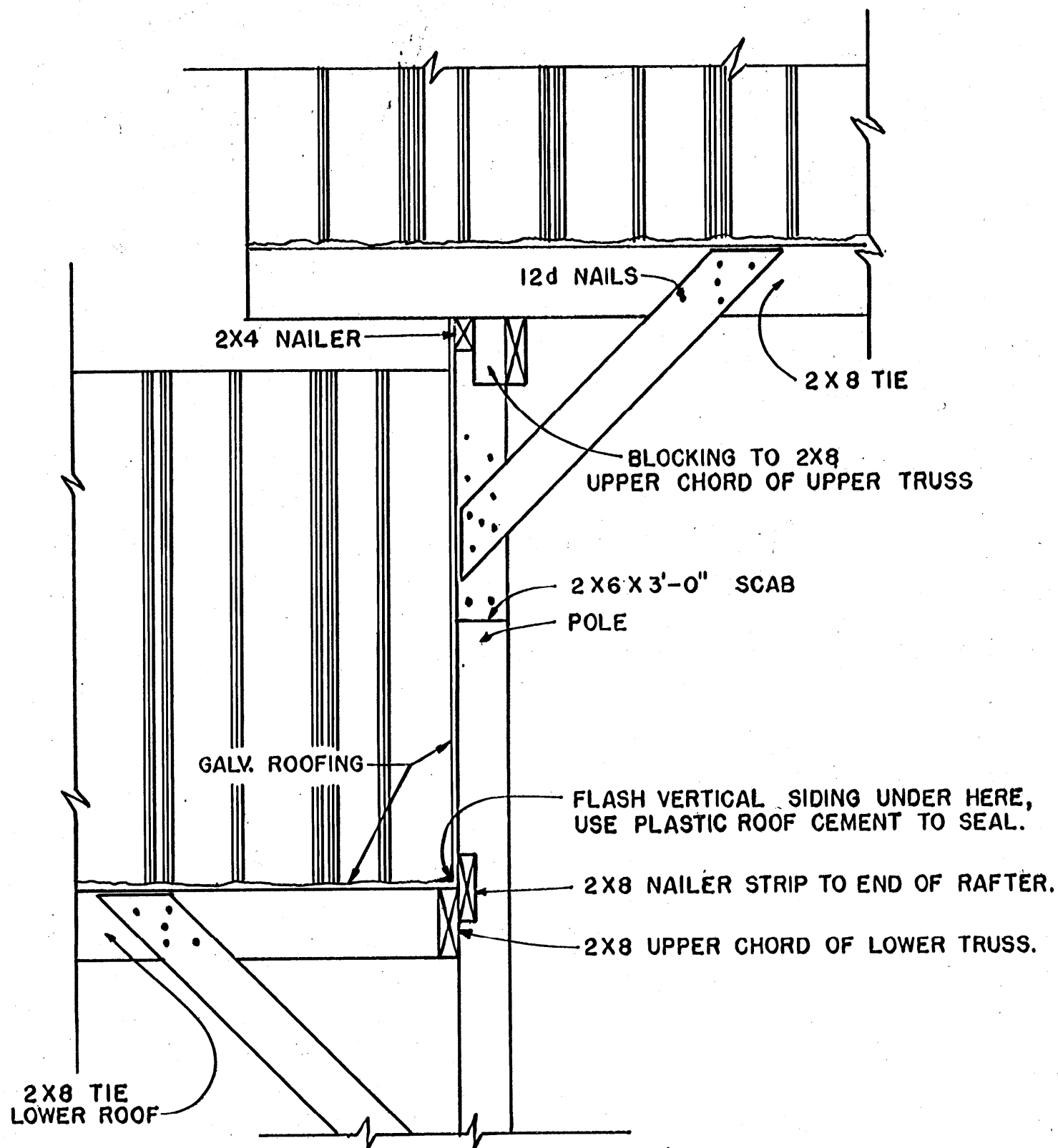
STATE OF MISSISSIPPI

MISSISSIPPI STATE UNIVERSITY

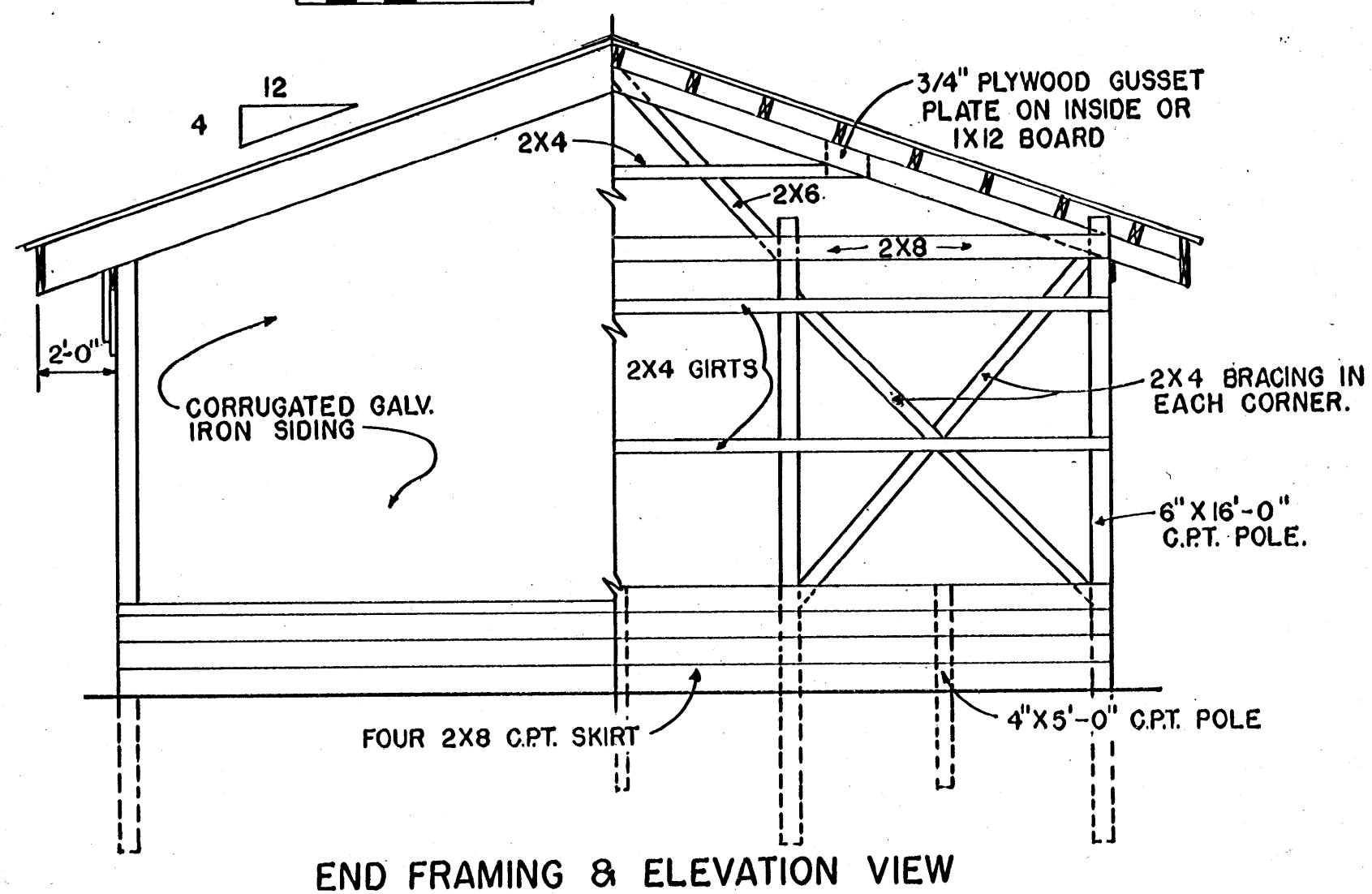
AND UNITED STATES DEPARTMENT OF AGRICULTURE COOPERATING

MACHINERY SHED		
MISS. '75	6220	SHEET 1 OF 2

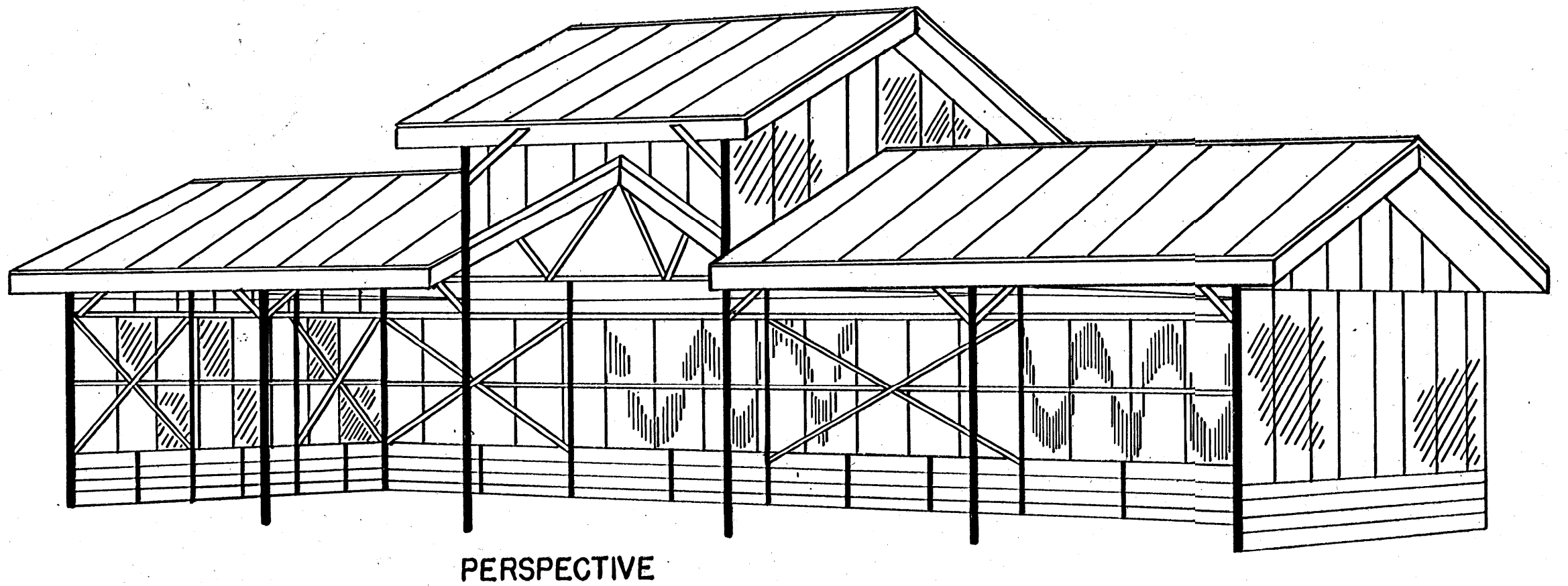
BASED ON: MISS. STATE UNIV. PLAN NO. 5841-A



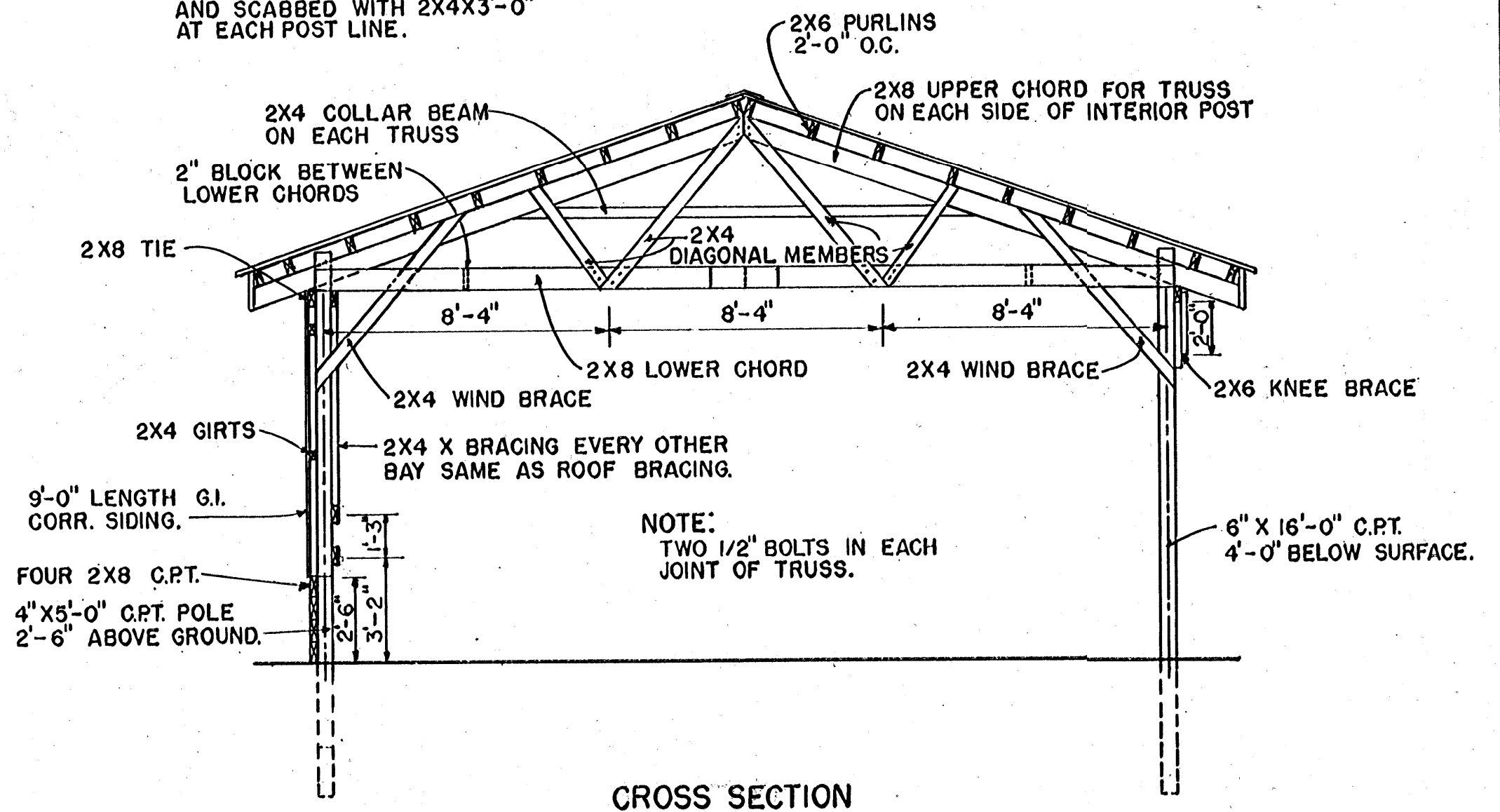
DETAIL A
SCALE: 3/4" = 1'-0"



END FRAMING & ELEVATION VIEW

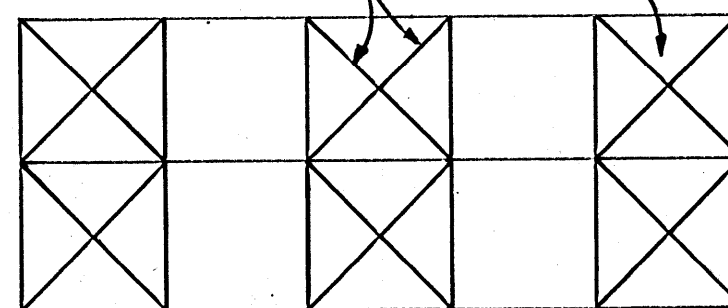


NOTE:
PURLINS BUTT JOINTED AND SCABBED WITH 2X4X3'-0" AT EACH POST LINE.



CROSS SECTION

1X4 BRACES EVERY OTHER BAY NAILED UNDER PURLINS.



12' 0' 1' 2' 3' 4' 5'

SCALE: 1/4" = 1'-0" UNLESS OTHERWISE NOTED.

COOPERATIVE EXTENSION WORK IN
AGRICULTURE AND HOME ECONOMICS
STATE OF MISSISSIPPI
MISSISSIPPI STATE UNIVERSITY
AND
UNITED STATES DEPARTMENT OF AGRICULTURE COOPERATING

MACHINERY SHED

MISS. '75	6220	SHEET 2 OF 2
-----------	------	--------------