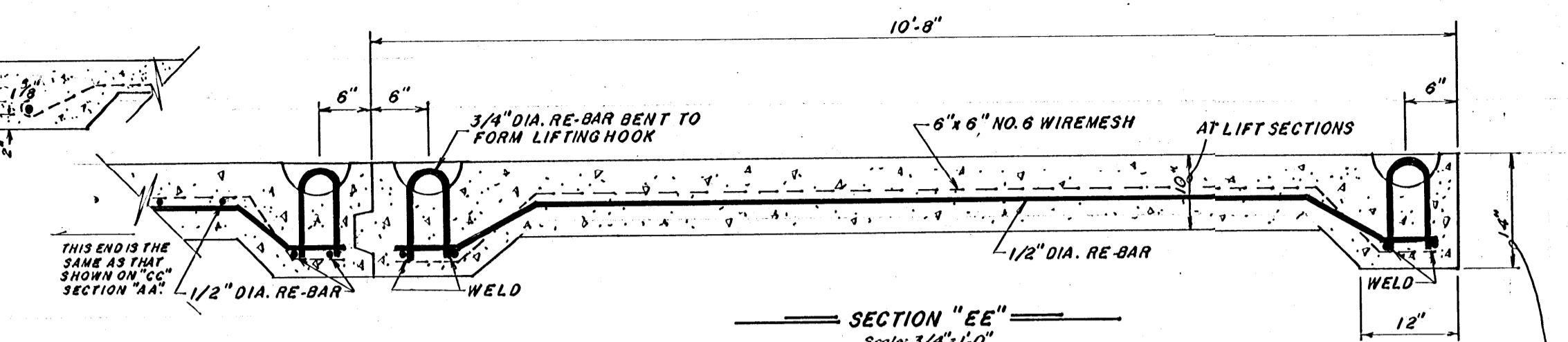
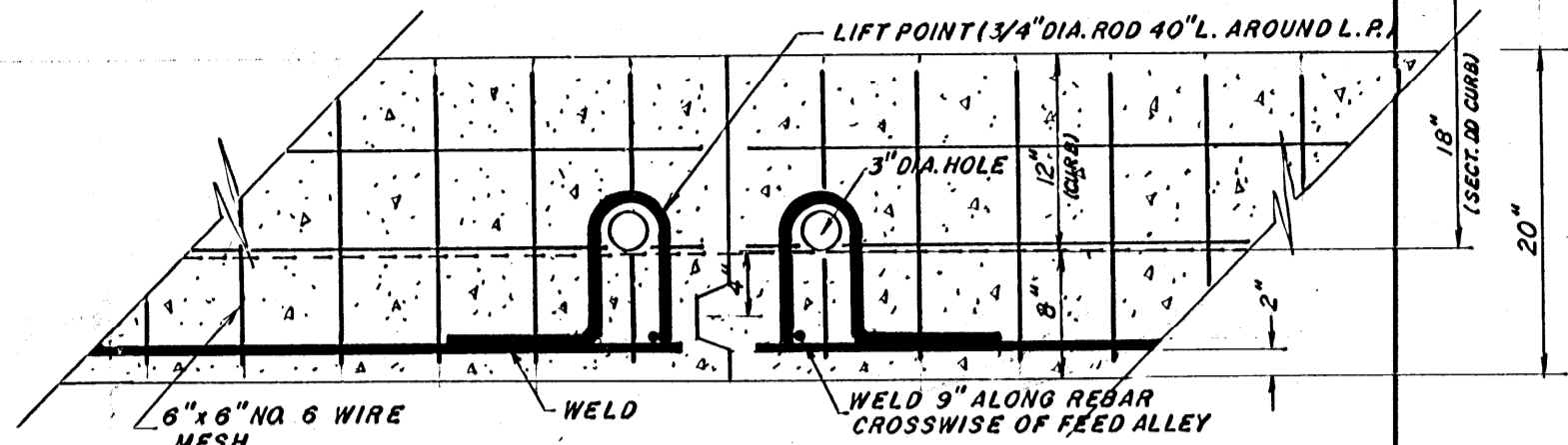


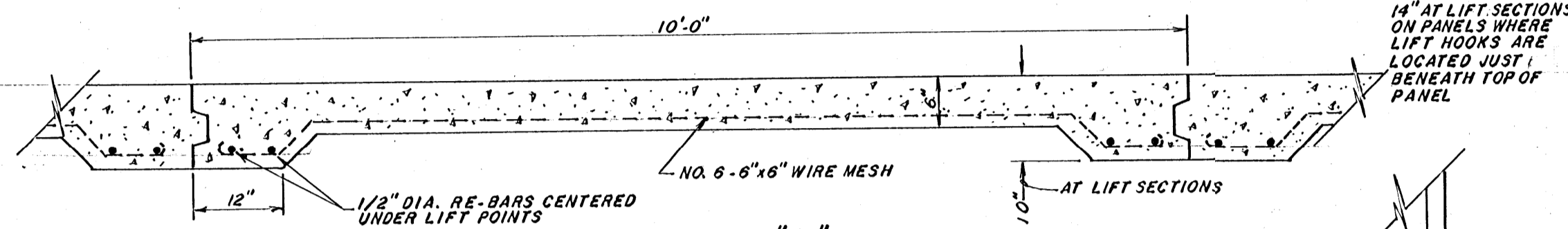
SECTION "BB"
Scale: 3/4"=1'-0"



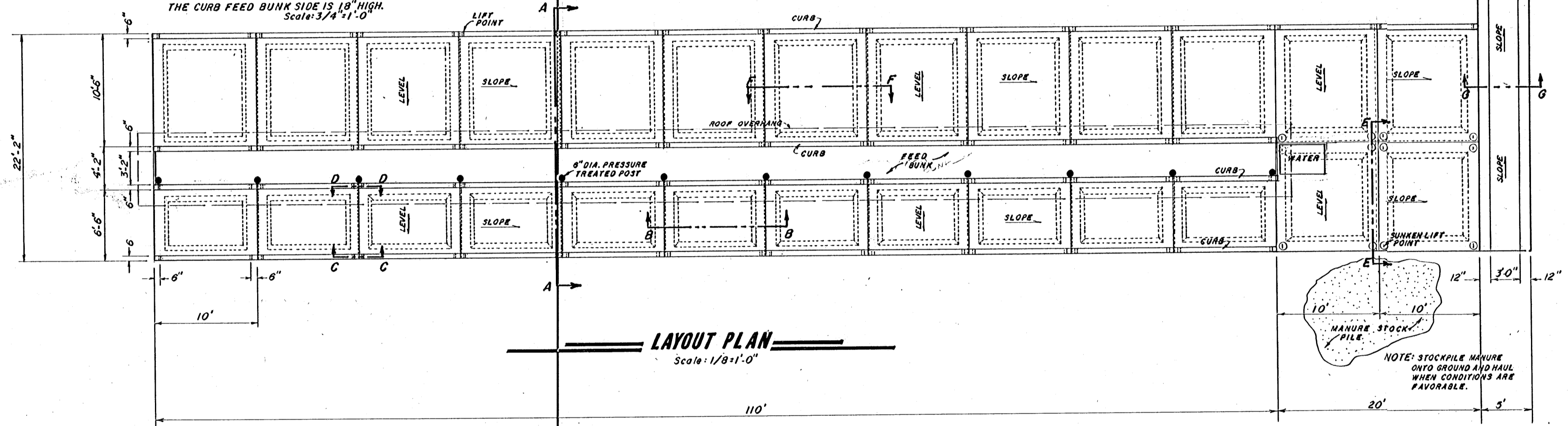
SECTION "EE"
Scale: 3/4"=1'-0"



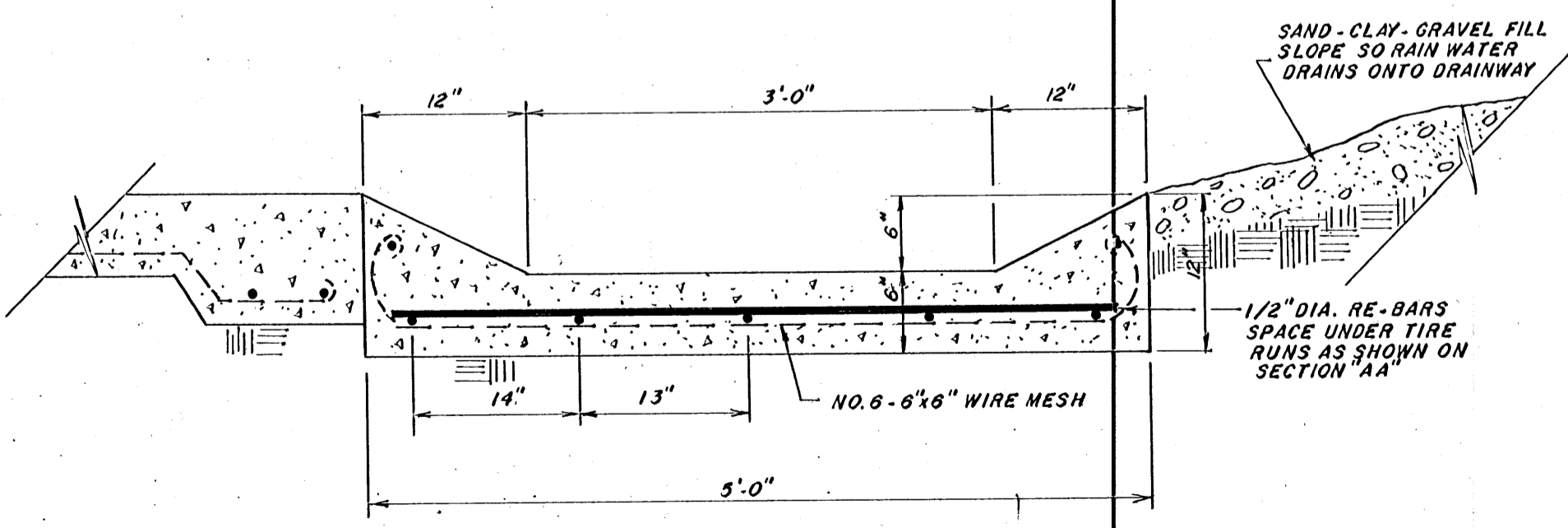
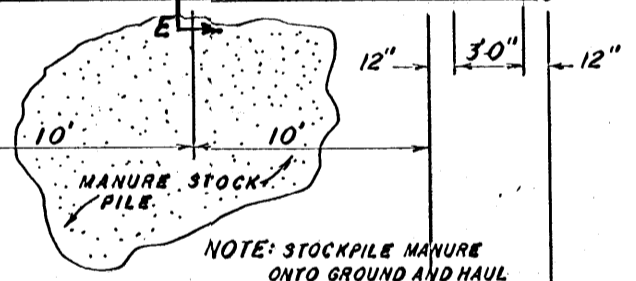
SECTION "CC"
"CC" SECTION "DD" ESSENTIALLY THE SAME EXCEPT THE CURB FEED BUNK SIDE IS 18" HIGH.
Scale: 3/4"=1'-0"



SECTION "FF"
Scale: 3/4"=1'-0"



LAYOUT PLAN
Scale: 1/8"=1'-0"

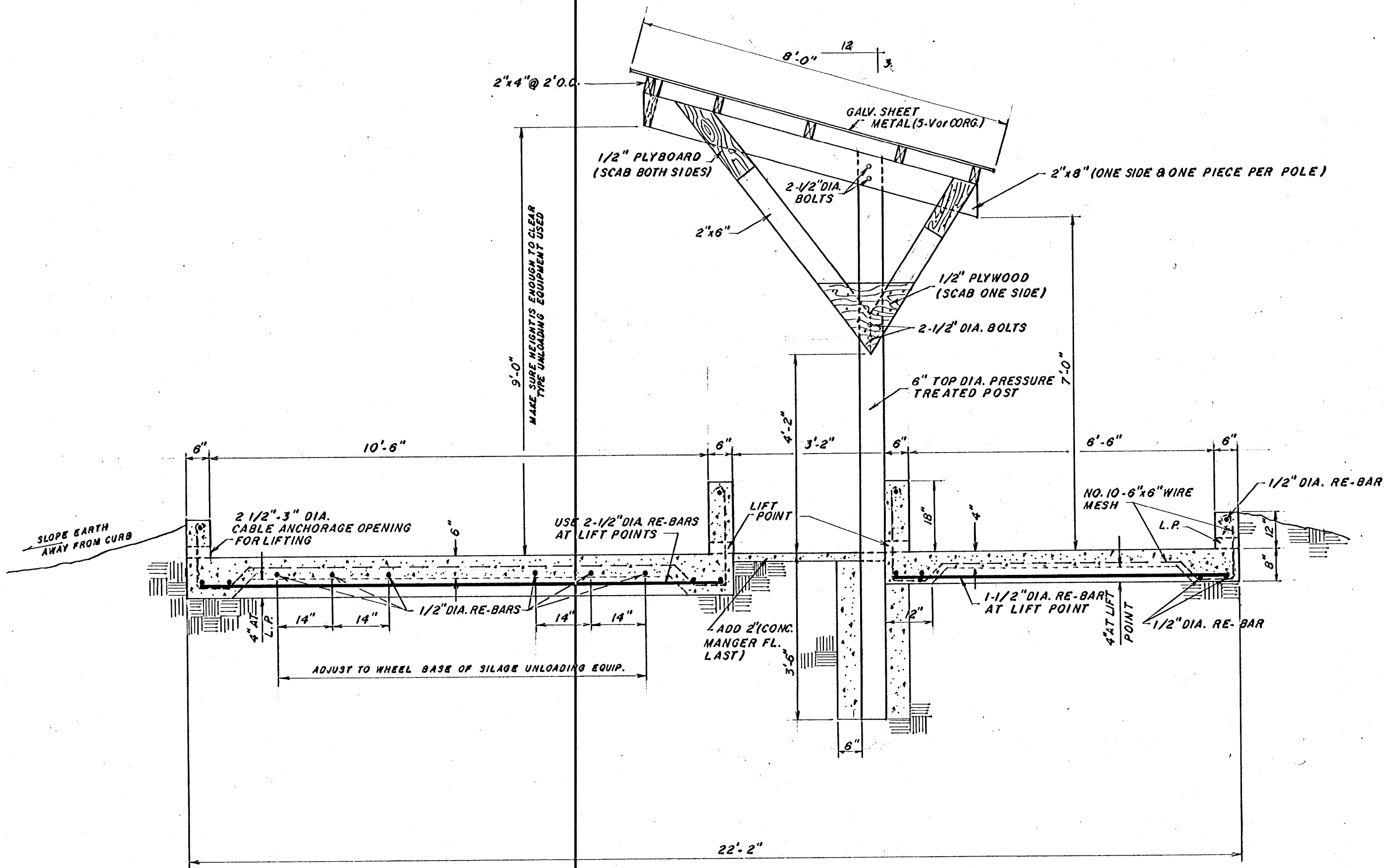


SECTION "GG"
Scale: 1"=1'-0"

CONCRETE SLABS REINFORCED FOR FUTURE RELOCATION.

LAYOUT PLAN	PL. NO. 6167-B
FEED LOT FOR BACK GROUNDING BEEF CATTLE (REINFORCED FOR FUTURE LIFTING & MOVING)	
DESIGN BY LEE MILLER	SHEET 1
DRAWN BY JERRY BINGHAM	OF 2
DATE AUGUST, 1982	





SECTION "A A"
Scale: 1/2"=1'-0"

DETAIL	PL. NO. 6167-B
FEED LOT FOR BACK GROUNDING BEEF CATTLE	
DESIGN BY LEE MILLER	SHEET 2
DRAWN BY JERRY BINGHAM	OF 2
DATE AUGUST, 1982	

