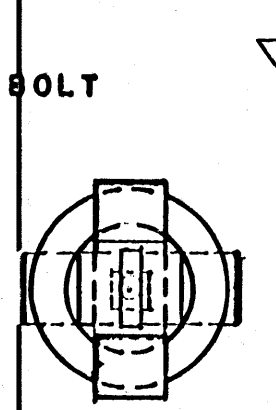
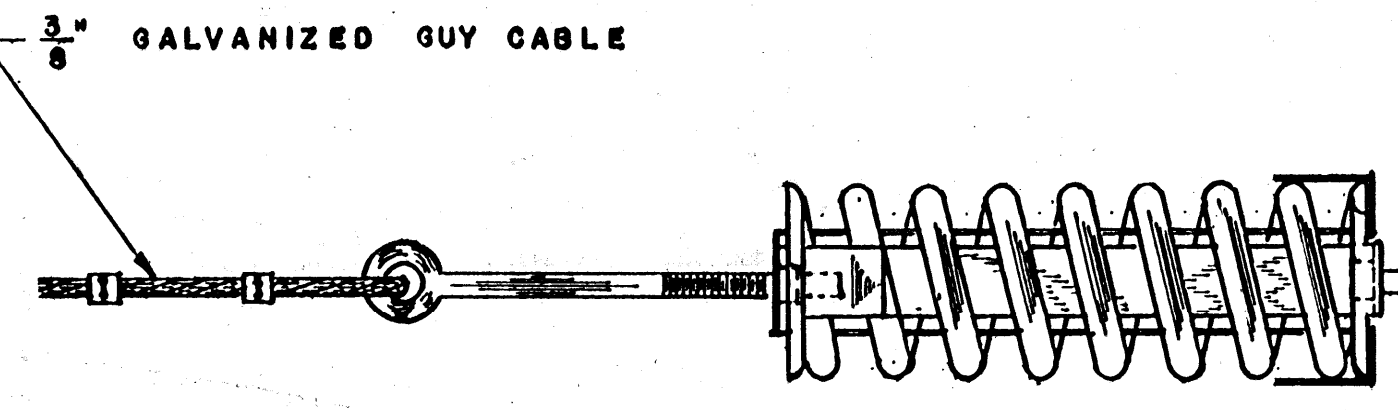


SHACKLE & SPRING

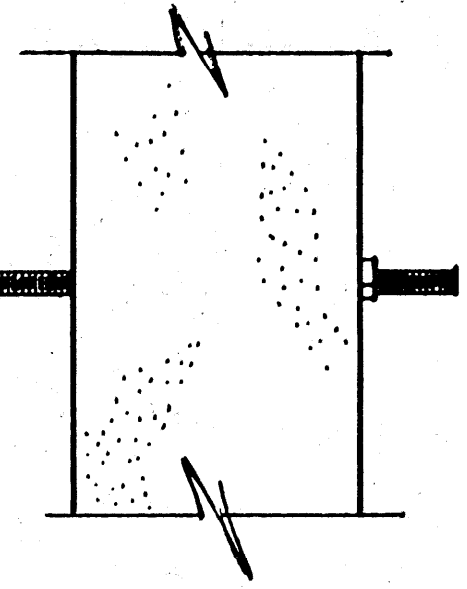
NOTE:
SHACKLES SHOULD NOT BE
MADE TILL AFTER SPRINGS
ARE SECURED



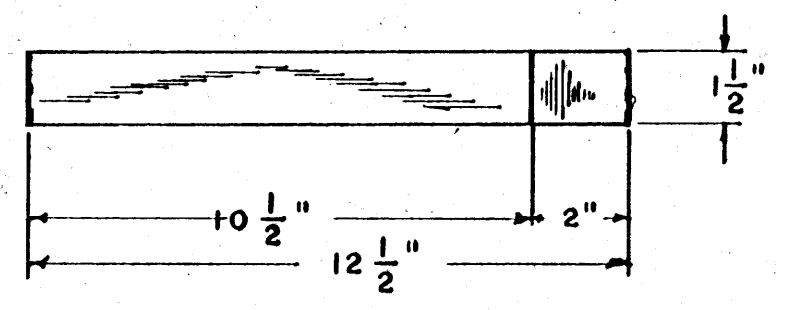
END VIEW



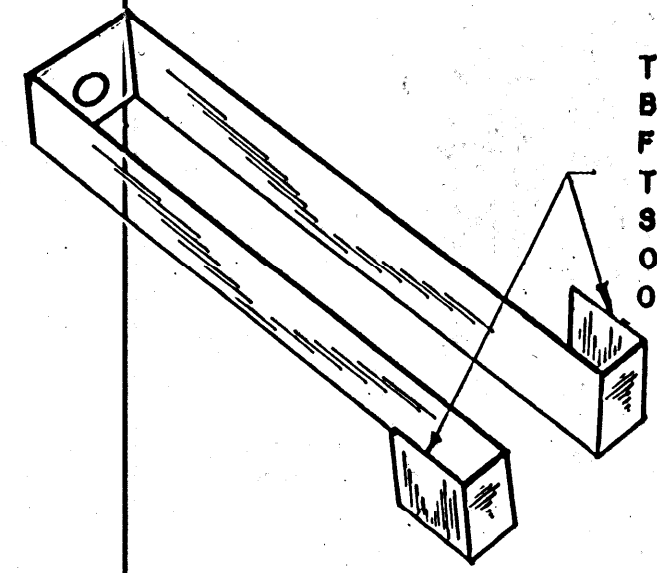
COMPRESSION OF SPRING



NOTE:
1/2" GALVANIZED EYE BOLTS
FOR USE ON END POSTS

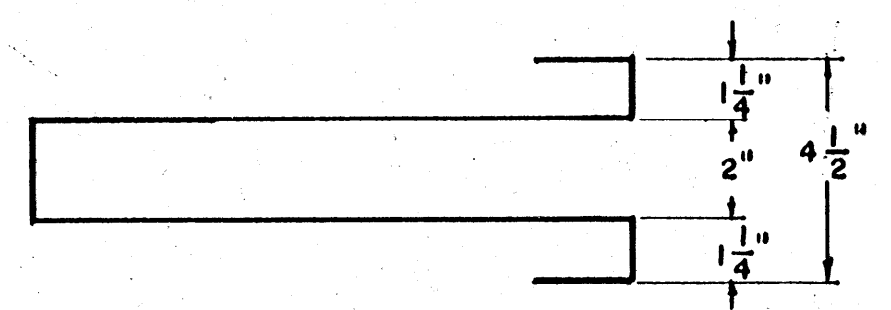


TOP VIEW

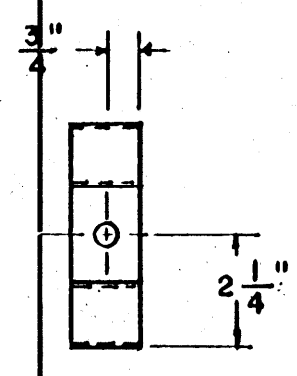


THE LEG OF SHACKLE SHOULD
BE LONG ENOUGH TO COMPENSATE
FOR THE SHAPE OF THE SPRING.
TWO SHACKLES REQUIRED PER SPRING.
SECOND SHACKLE MUST BE FORMED
OVER SPRING END AFTER INSTALLATION
OF THE FIRST SHACKLE.

SHACKLE

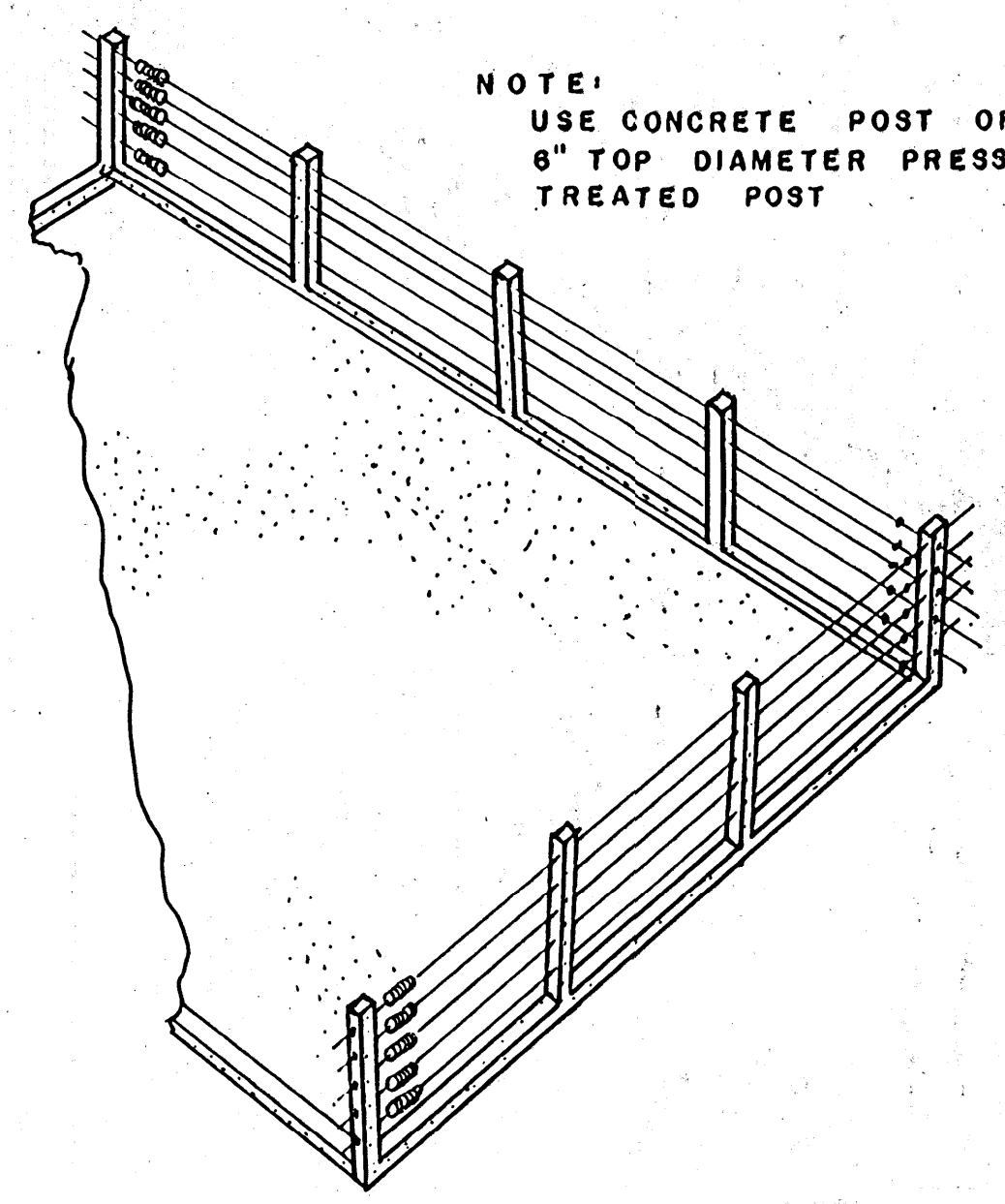


FRONT VIEW



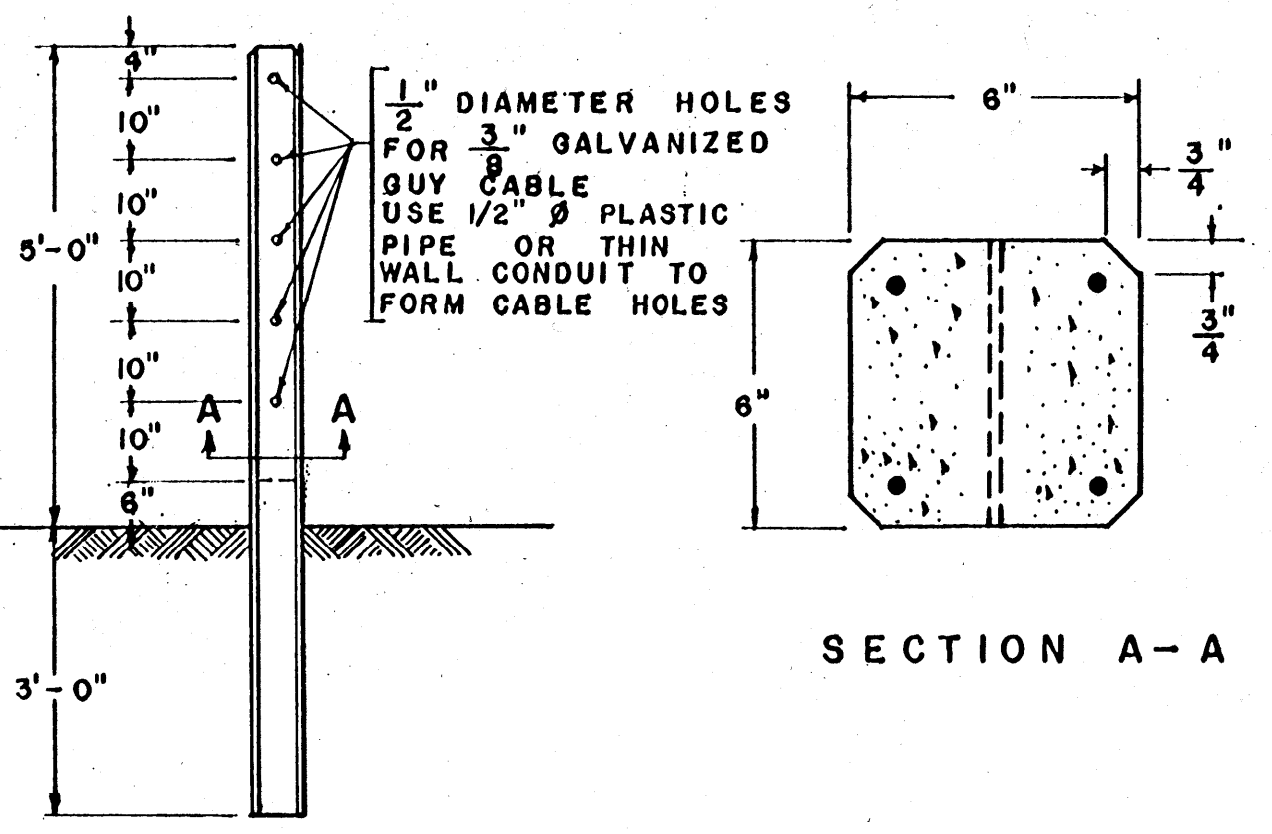
END VIEW

NOTE:
OUTSIDE DIAMETER OF
AUTOMOBILE SPRING FROM
SALVAGE SHOULD BE A
MINIMUM OF 4"



NOTE:
USE CONCRETE POST OR
6" TOP DIAMETER PRESSURE
TREATED POST

PERSPECTIVE



SECTION A-A

NOTE:
4 NO. 3 (3/8") RE-BARS PLACED IN THE
CORNERS AND COVERED WITH
A MINIMUM OF 3/4" OF
CONCRETE AT ALL POINTS.

THE LARGEST SIZE AGGREGATE
SHOULD BE 1/2"

BEVEL CORNERS BY PLACING
1/2" TRIANGULAR STRIP
IN FORM

CONCRETE POST
SCALE: 1/2" = 1'-0"

BASED ON: MISS. STATE UNIV. PLAN NO. 5961A

SCALE: 3" = 1'-0" UNLESS OTHERWISE NOTED.

COOPERATIVE EXTENSION WORK IN AGRICULTURE AND HOME ECONOMICS		
STATE OF MISSISSIPPI		
MISSISSIPPI STATE UNIVERSITY		
UNITED STATES DEPARTMENT OF AGRICULTURE COOPERATING		
CABLE FENCING		
MISS. '73	EX. 6162	SHEET 1 OF 1