

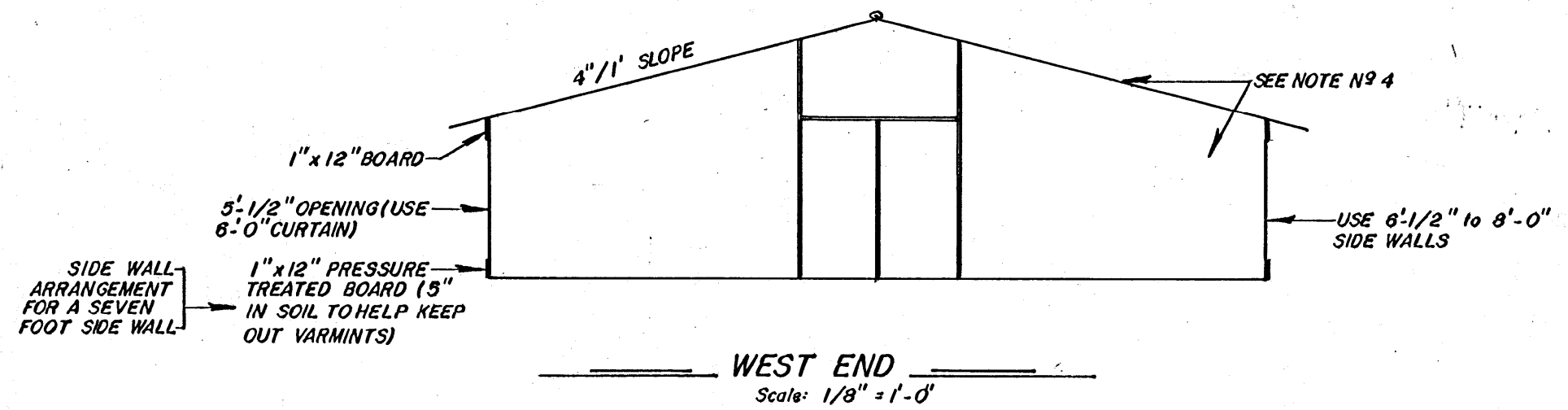
NOTES:

1. THIS FLOOR PLAN IS OFFERED ONLY AS A SUGGESTION FOR HOUSE & PEN SIZE, IT IS NOT INTENDED TO BE COMPLETE IN ALL DETAILS.
2. YOU MAY CHOOSE TO PLACE DOORS ON THE OUTSIDE WALL OF THE PENS TO USED IN LOADING AND UNLOADING LITTER MATERIAL AND BIRDS. IF SO, YOU MAY CHOOSE TO REDUCE THE 8'-0" AISLE TO 6'-0" OR 4'-0" WIDE. THE HOUSE WIDTH SHOULD REDUCE BY THE SAME AMOUNT.
3. USING TWO 15,000-20,000 BTU SIZE BROODERS AFFORDS SAFETY AGAINST A BROODER GOING OUT AND BEING LEFT WITH NO HEAT. IF YOU CHOOSE TO USE ONLY ONE BROODER, USE ONE WITH ABOUT A 30,000 BTU OUTPUT.
4. INSULATE ROOF AND END WALLS WITH INSULATION HAVING R FACTOR RATING OF ELEVEN.

FLOOR PLAN
Scale: 1/8" = 1'-0"

1. EACH OF THE EIGHT PENS HAS THE CAPACITY TO ACCOMMODATE 1,000 BOBWHITE QUAIL 7 TO 14 WEEKS OF AGE
2. TOTAL SQUARE FEET = 4,000
3. SQUARE FEET/PEN = 400
4. SQUARE FOOT/BIRD = .40

BOTH SIDE WALLS AS BELOW



FLOOR PLAN & WEST END	PL. NO. 6084 C
BOBWHITE QUAIL GROWOUT HOUSE	
Mississippi Cooperative Extension Service Mississippi State University USDA and Counties Cooperating	DESIGN BY DR. R. HAYNES DRAWN BY PAM BENNETT DATE JANUARY, 1986
SHEET / OF /	