

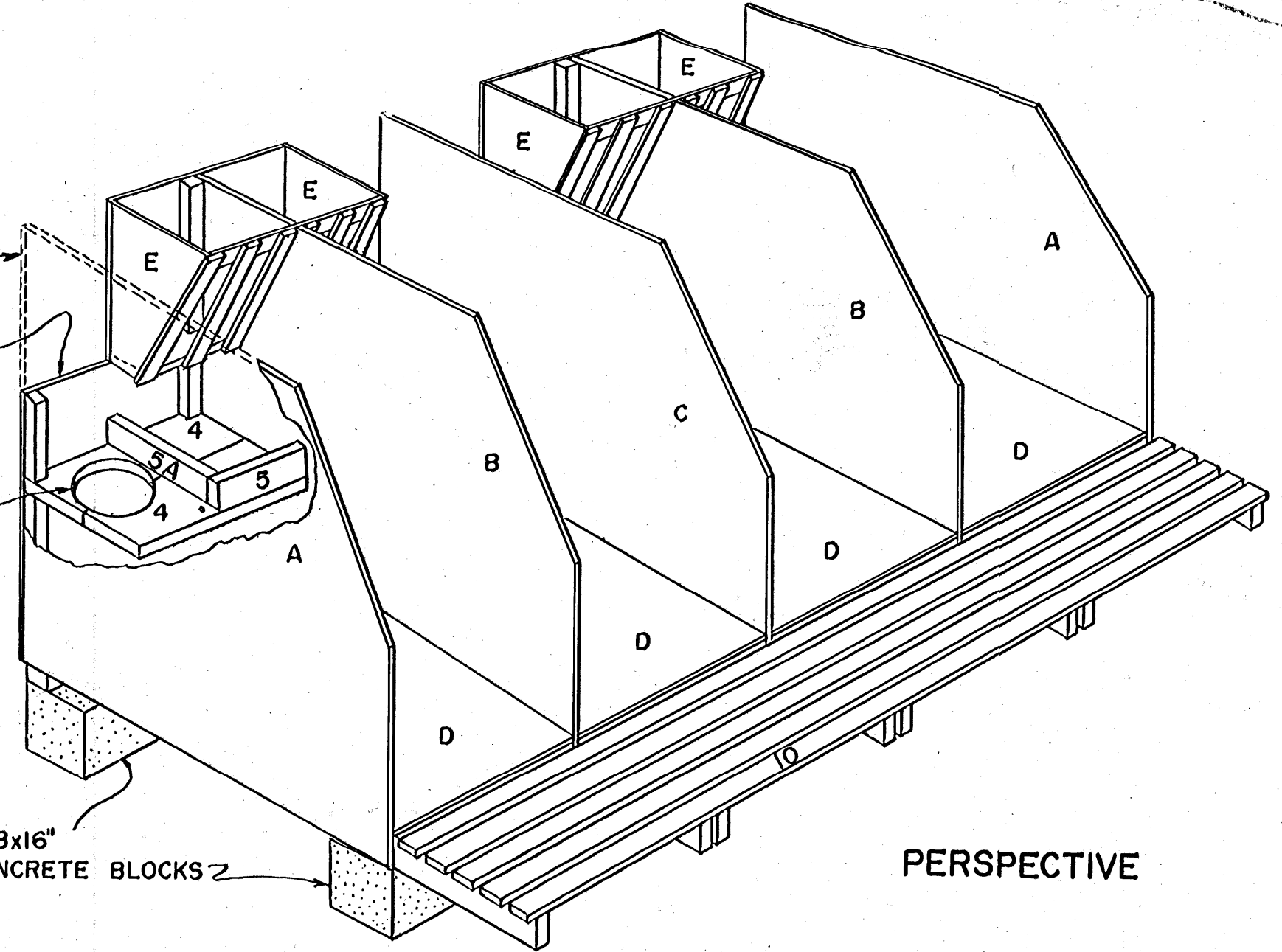
CROSS SECTION

END OMITTED FOR CLARITY  
CUT OUT AFTER ASSEMBLY IF FED FROM THE FRONT

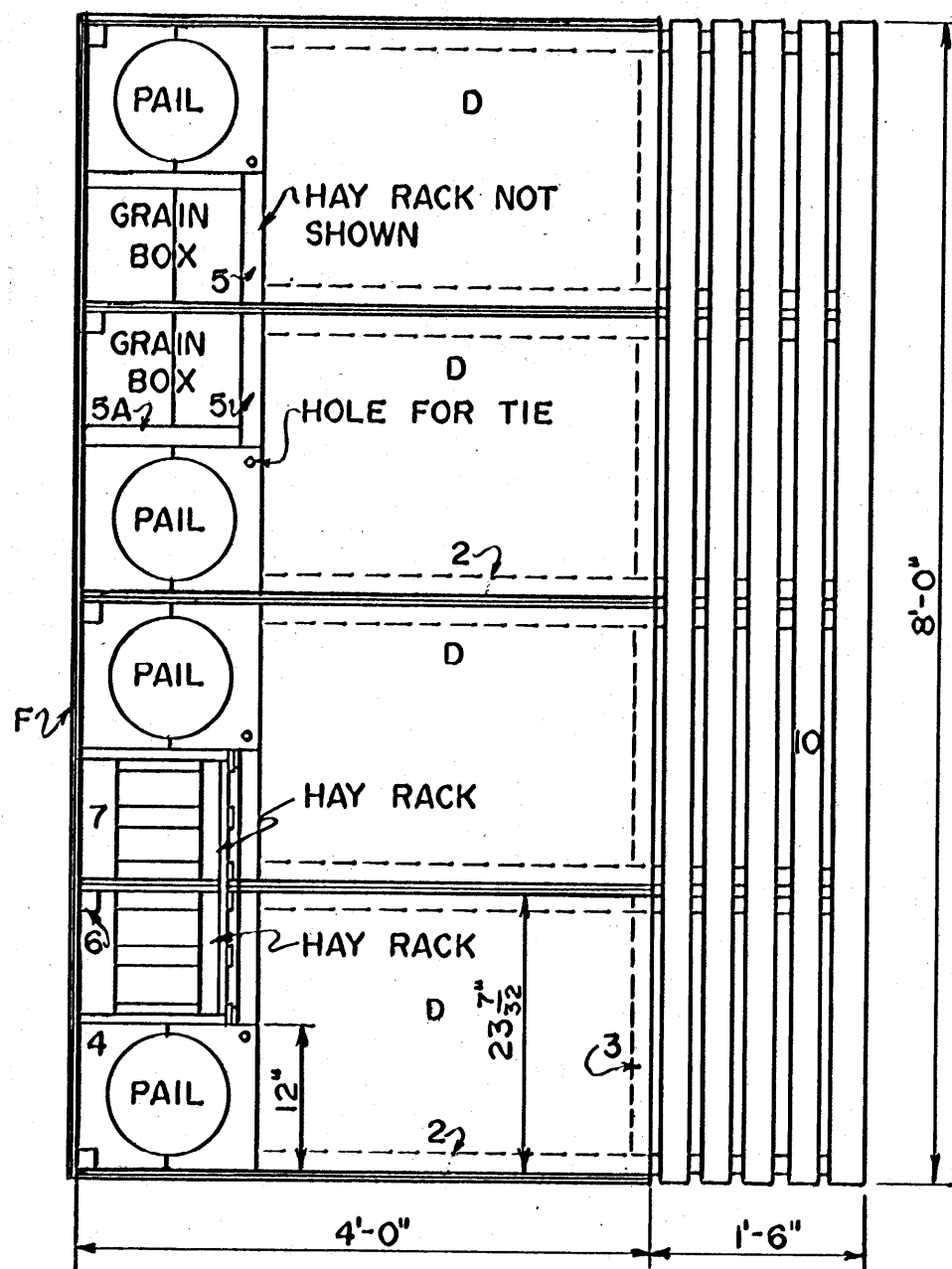
CUT PAIL OPENING BEFORE ASSEMBLY

8x8x16" CONCRETE BLOCKS 2

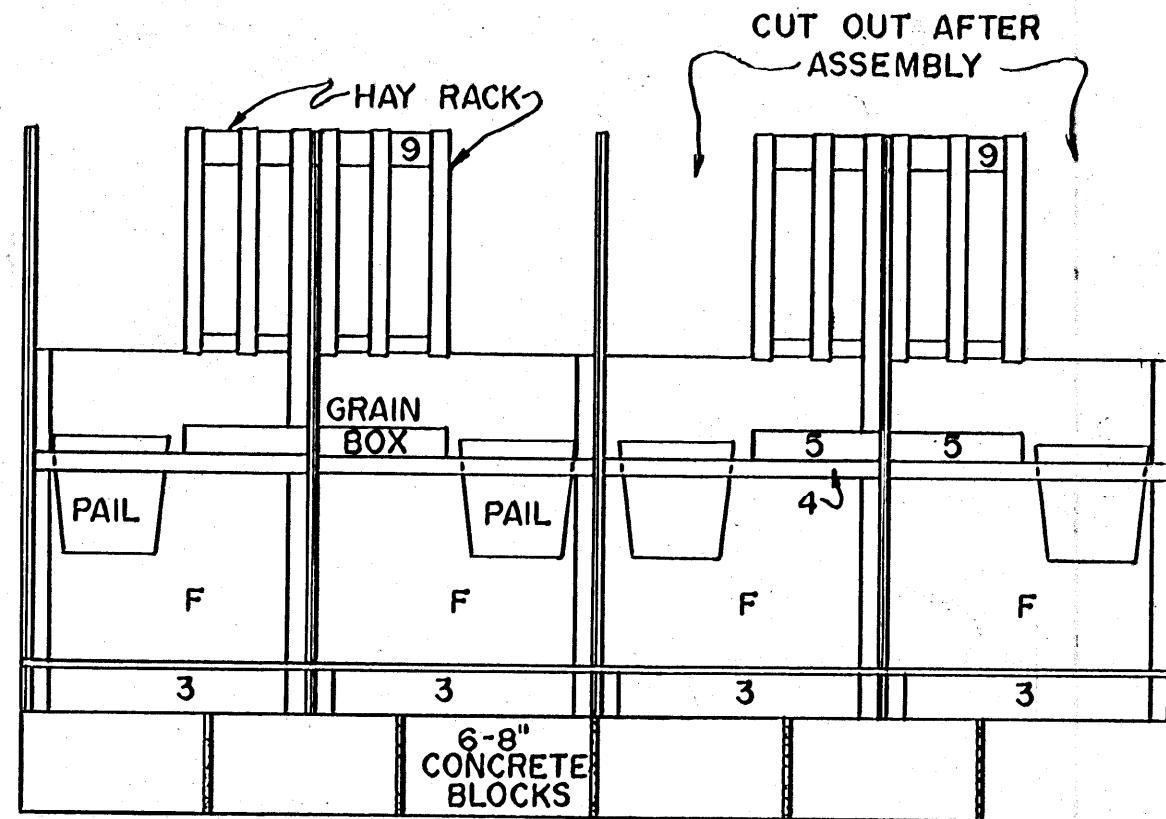
CUT OUT AFTER ASSEMBLY



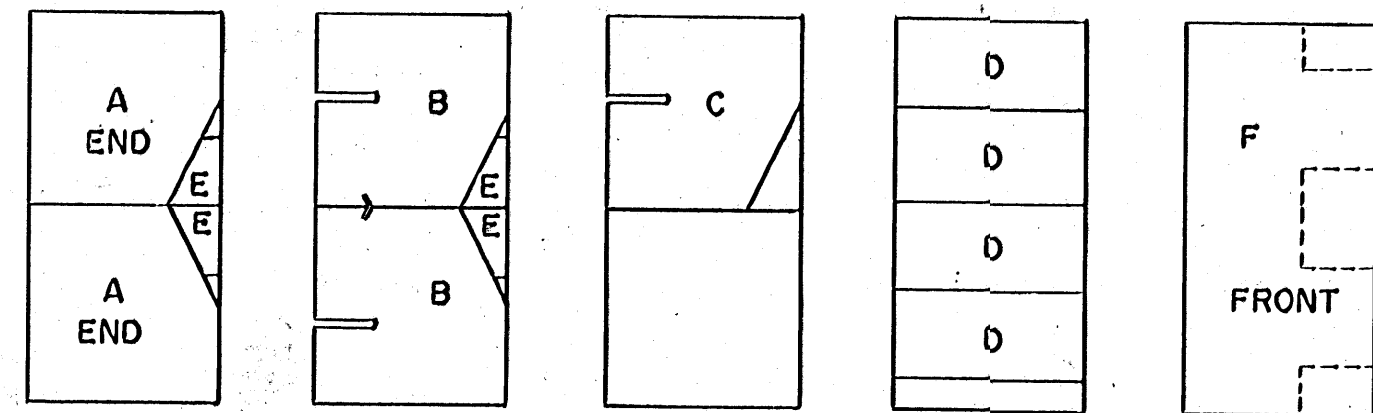
PERSPECTIVE



PLAN VIEW



REAR VIEW



PLYWOOD CUTTING DIAGRAM  
SCALE: 1/4" = 1'-0"

**PARTS LIST**

1. FRONT ELEVATION BLOCK	1 PC	2x4x8'-0"
2. BED PIECES	8 PCS	2x4x5'-6"
3. FILLER BLOCKS	4 PCS	2x4x20"
4. TRAY BOTTOM	2 PCS	2x8x8'-0"
5. BOX EDGE	4 PCS	2x4x12"
5A. BOX EDGE	4 PCS	2x4x14"
6. CORNER BLOCKS	5 PCS	2x2x4'-0"
7. HAY RACK BOTTOM	4 PCS	2x4x12"
8. HAY RACK SLATS	12 PCS	1x2x20"
9. HAY RACK TOP RAIL	2 PCS	1x3x24"
10. REAR FLOOR SLATS	5 PCS	1x3x8'-0"

**MATERIALS NEEDED FOR A SECTION OF FOUR STALLS**

8 PCS	2x4x12'-0"	FOR PARTS NUMBER 1,2,3,5A,7
2 PCS	2x8x8'-0"	FOR PART NUMBER 4
44 LINEAR FT.	1x3	FOR PARTS NUMBER 9,10
5 SHEETS	4x8 PLYWOOD, 5/8" EXTERIOR CUT AS IN DIAGRAMS	
12	8x8x16" CONCRETE BLOCKS FOR BASE	
PORTLAND CEMENT MORTAR		
RUSTPROOF NAILS OR SCREWS		
1 PC	2x2x12'-0"	FOR PART NUMBER 6
1 PC	2x2x8'-0"	FOR PART NUMBER 6
20 LINEAR FT.	1x2	FOR PART NUMBER 8

NOTE: SCALE: 3/4" = 1'-0" UNLESS OTHERWISE NOTED.

NOTE: MEASUREMENTS OF SOME PARTS ARE NOT DEFINITE. DIMENSION LUMBER VARIES SLIGHTLY IN SIZE, SO PIECES MUST BE CUT TO FIT.

PENNA. STATE UNIV. PLAN 723-215

COOPERATIVE EXTENSION WORK IN AGRICULTURE AND HOME ECONOMICS  
STATE OF MISSISSIPPI  
MISSISSIPPI STATE UNIVERSITY  
UNITED STATES DEPARTMENT OF AGRICULTURE COOPERATING

**CALF TIE STALL**

PA. '68 EX. 6057 SHEET 1 OF 1