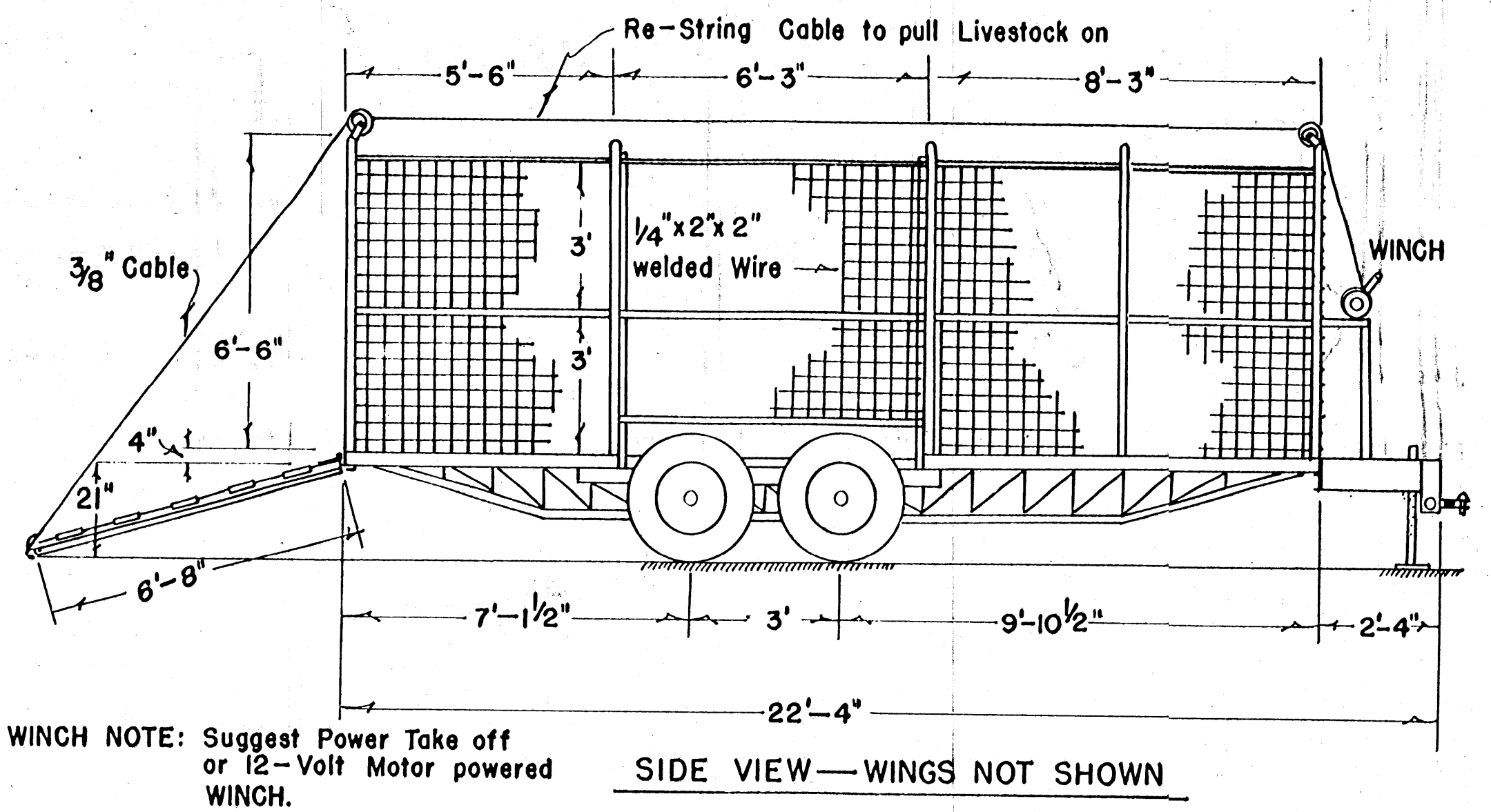
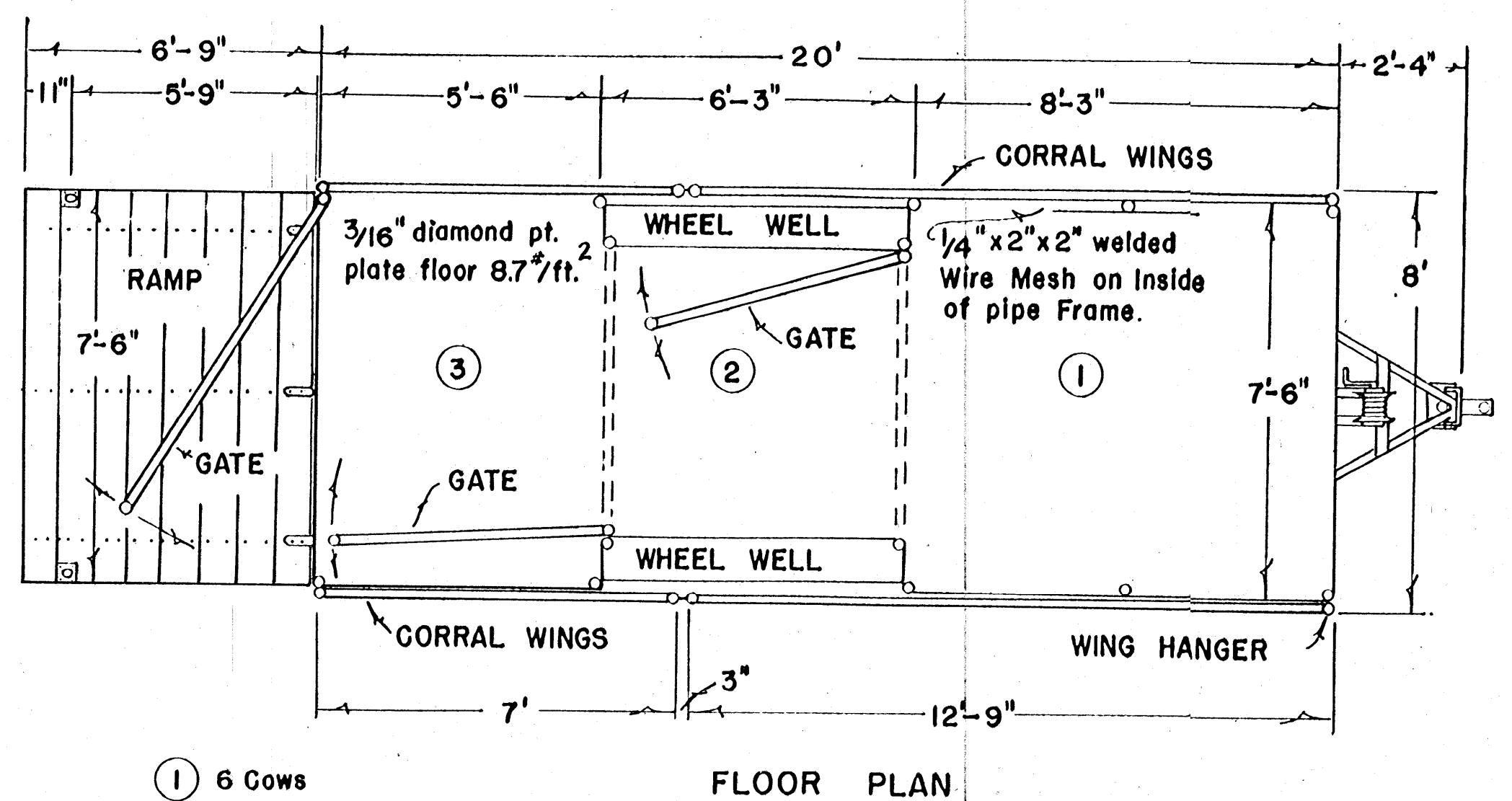


HITCH NOTE: A Gooseneck or heavy duty Ball Hitch maybe preferred — check Tractor & Truck Hitch Dimensions.



WINCH NOTE: Suggest Power Take off or 12-Volt Motor powered WINCH.



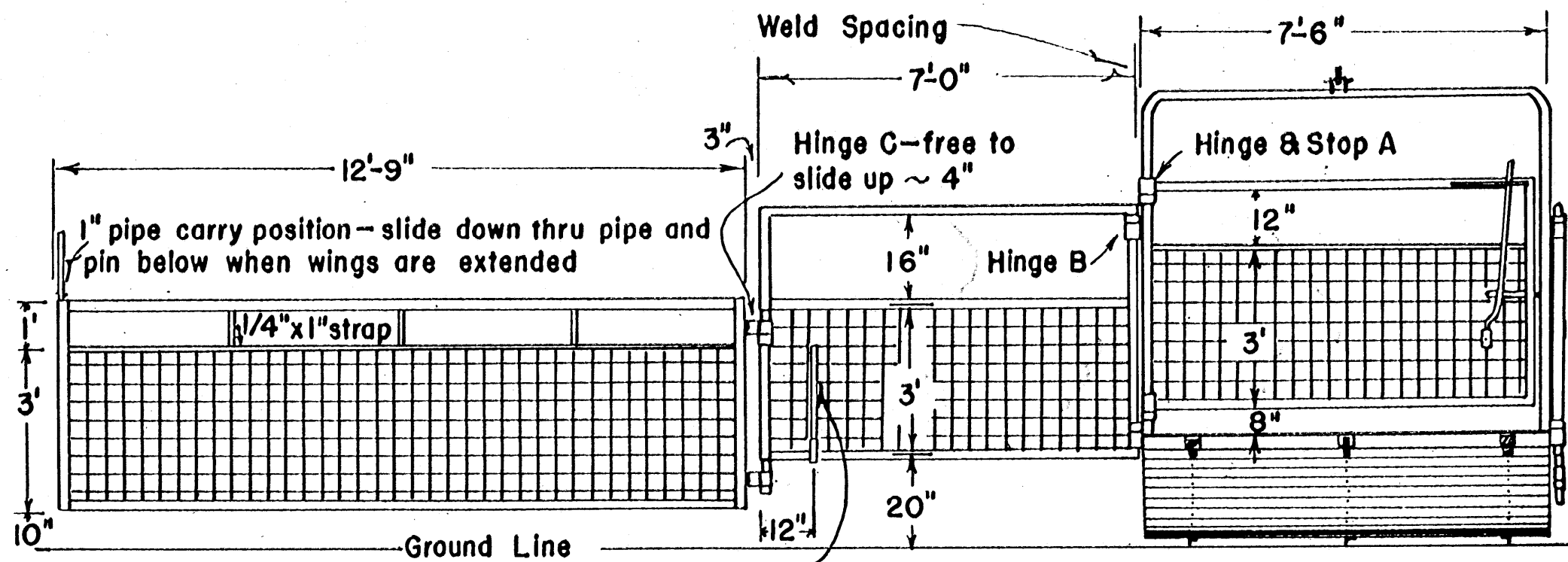
- ① 6 Cows
- ② 6 Calves
- ③ 2 Saddle Horses
- ① + ② + ③ 25 Calves (400 #)

COOPERATIVE EXTENSION WORK IN AGRICULTURE AND HOME ECONOMICS  
 STATE OF MISSISSIPPI  
 MISSISSIPPI STATE UNIVERSITY  
 AND  
 UNITED STATES DEPARTMENT OF AGRICULTURE COOPERATING

**PORTABLE CORRAL TRANSPORT**

ARIZ.	'68	EX. 6041	SHEET 1 OF 3
-------	-----	----------	--------------

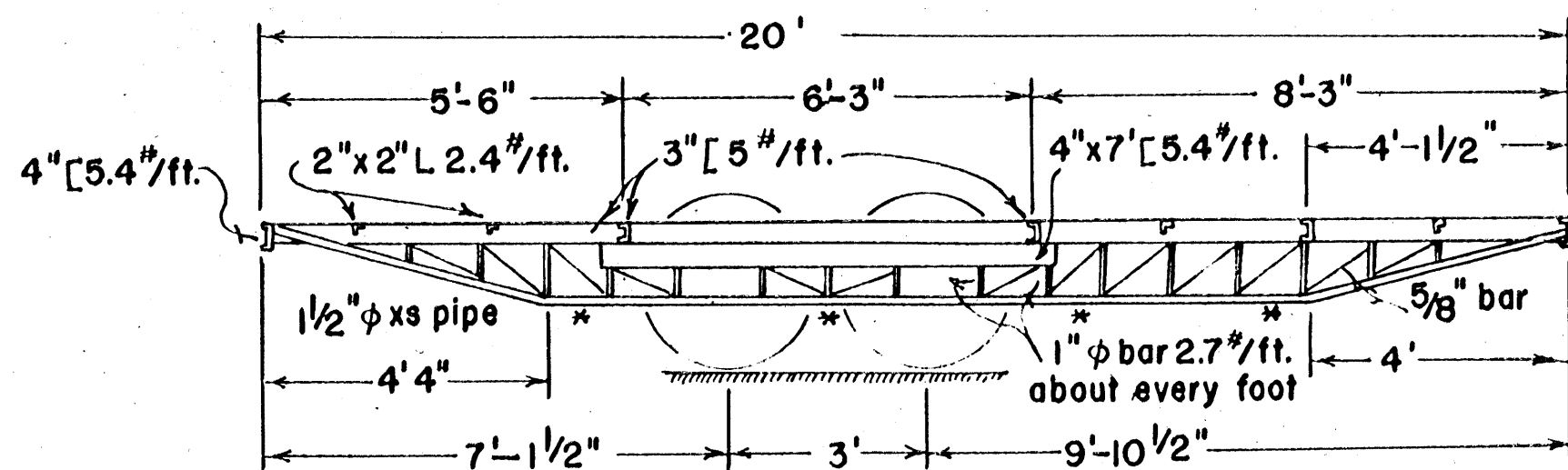
ORIGINAL DESIGN: FRED VOORHEES,  
 YERBA BUENA RANCH, NOGALES, ARIZONA.



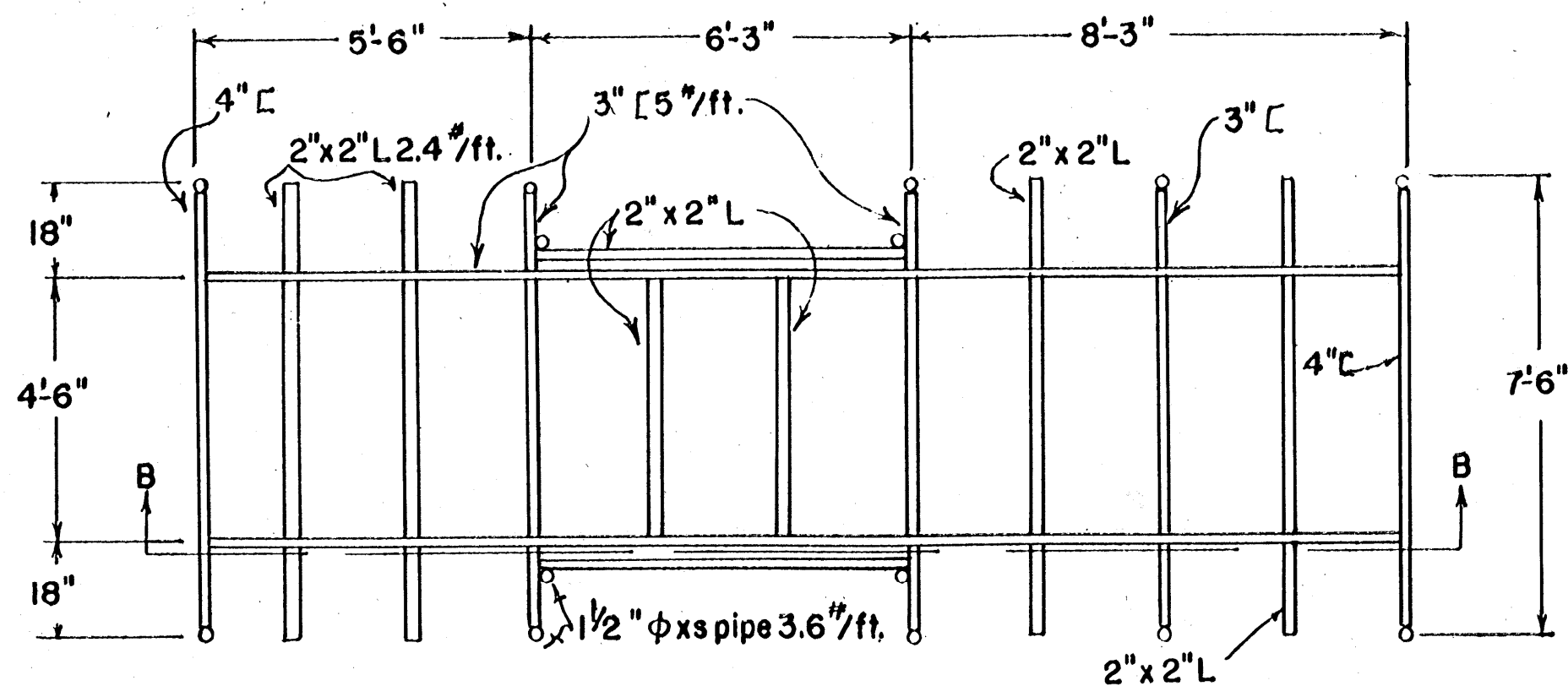
NOTE: Suggest TECO SQUARE BOLT GATE LATCH for all 3 PARTITION GATES.

1" pipe carry position—slide down and insert into rear of ramp when wings are extended

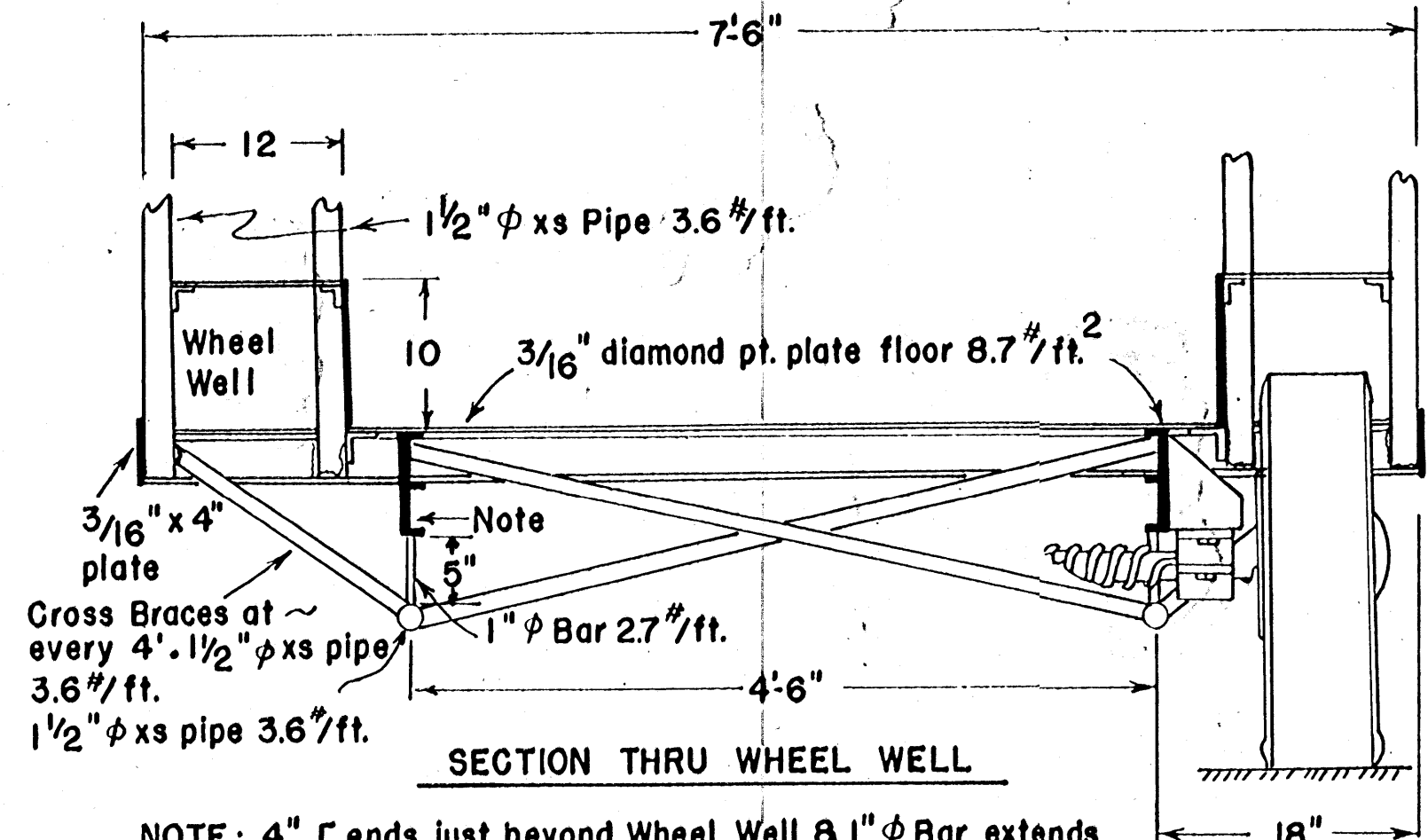
REAR VIEW of TRAILER W/LOADING RAMP DOWN, RIGHT WING IN CARRY POSITION & LEFT WING EXTENDED TO SHOW DETAIL.



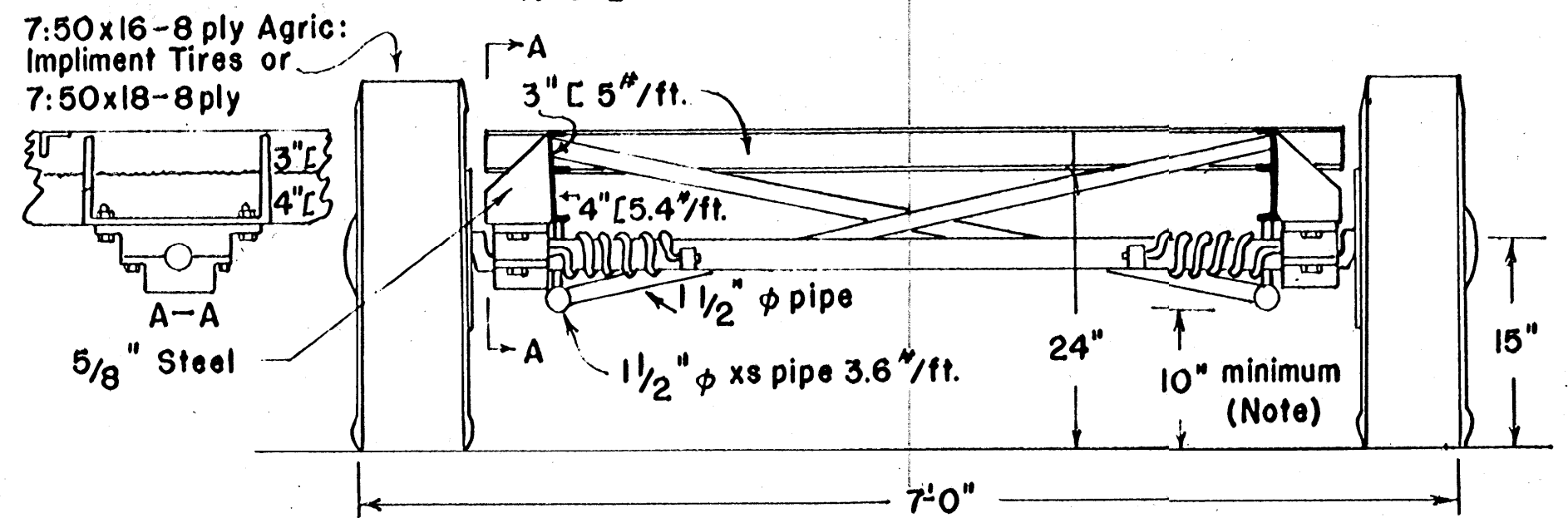
SECTION B-B FLOOR FRAME-TRUSS



FLOOR FRAME PLAN



NOTE: 4" C ends just beyond Wheel Well & 1" phi Bar extends to 3" C



TANDEM AXLE W/TORSION SPRINGS

NOTE: Other Wheel Systems may also be used in Tandem:

1. Straight Axle W/Leaf Springs
2. Straight Axle — no Springs

An increased Truss Clearance to 14" would be desirable for range conditions. This can be done by increasing Tire Size or via Raised Axle. Torsion Spring Axle is a short drop Axle that tends to drop slightly more as load increases.

CAUTION: Expected Maximum Load will approach 7 tons. Therefore, Specify each Axle & Wheel System to carry at least 3 1/2 tons (non highway use and less than 20 mph) when ordering from Carriage Manufacturer.

\* Cross Brace Locations — also suggested: Diagonal Braces from right front to left rear and left front to right rear of Trusses.

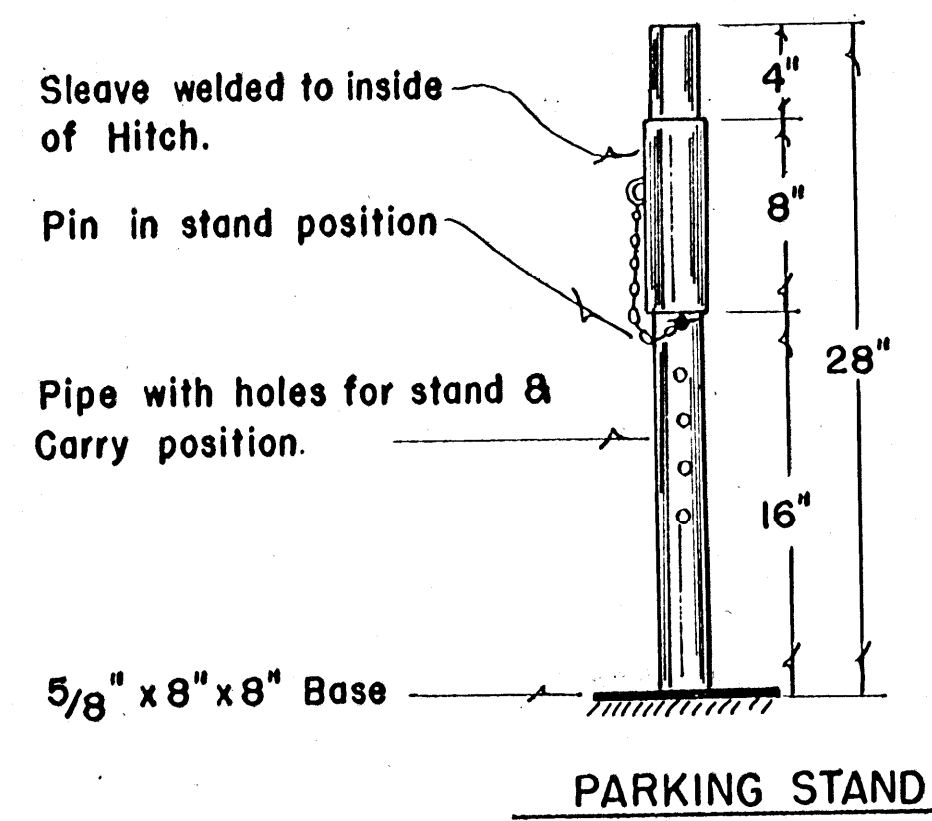
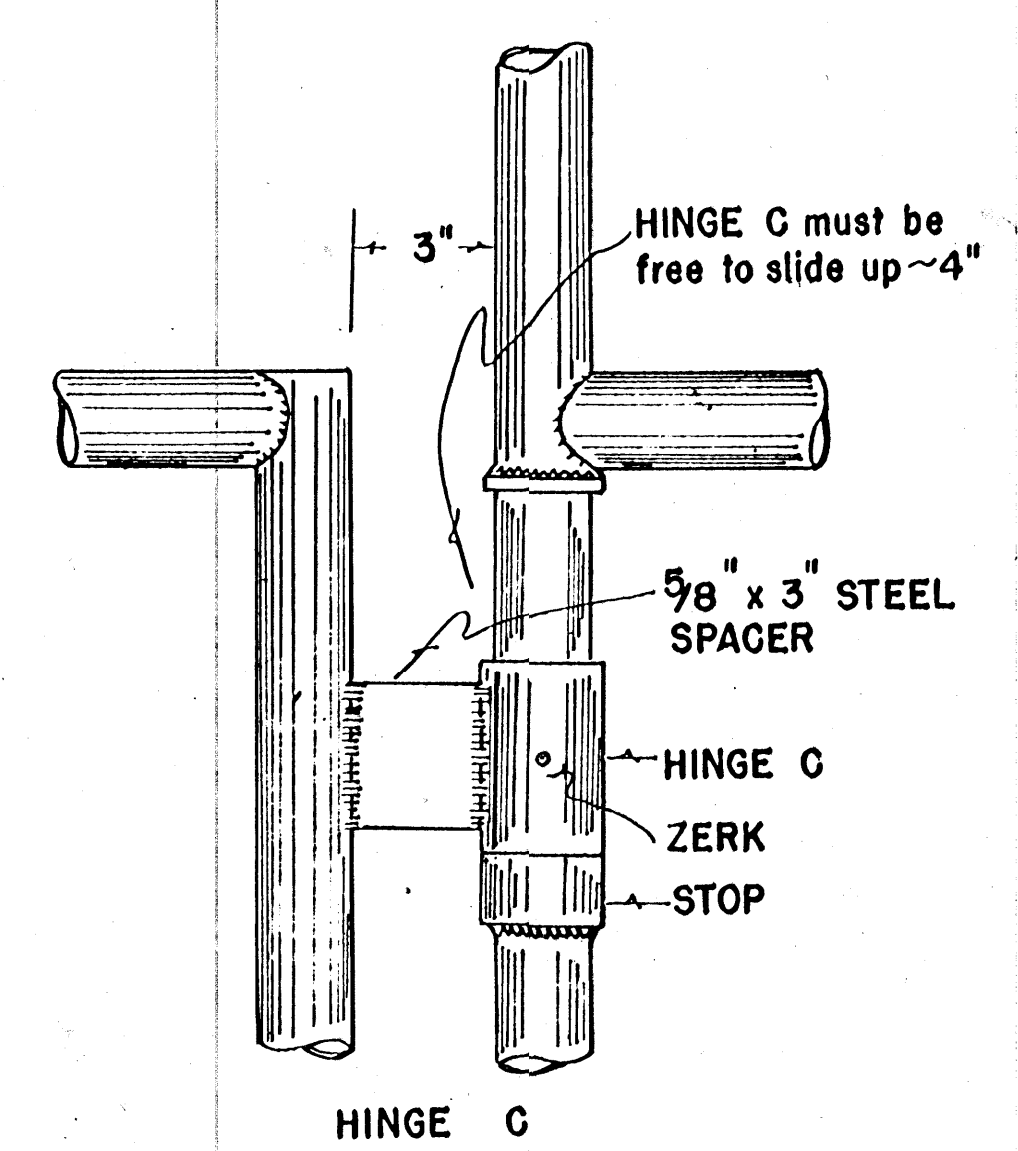
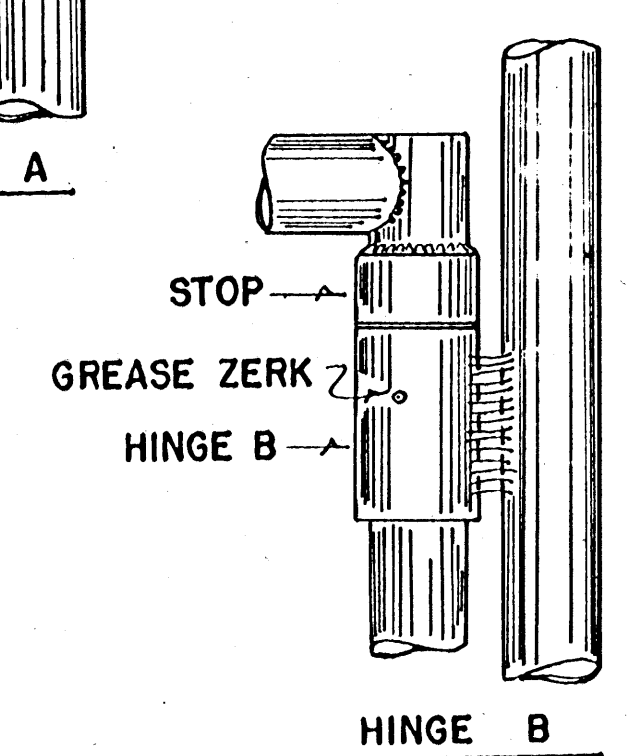
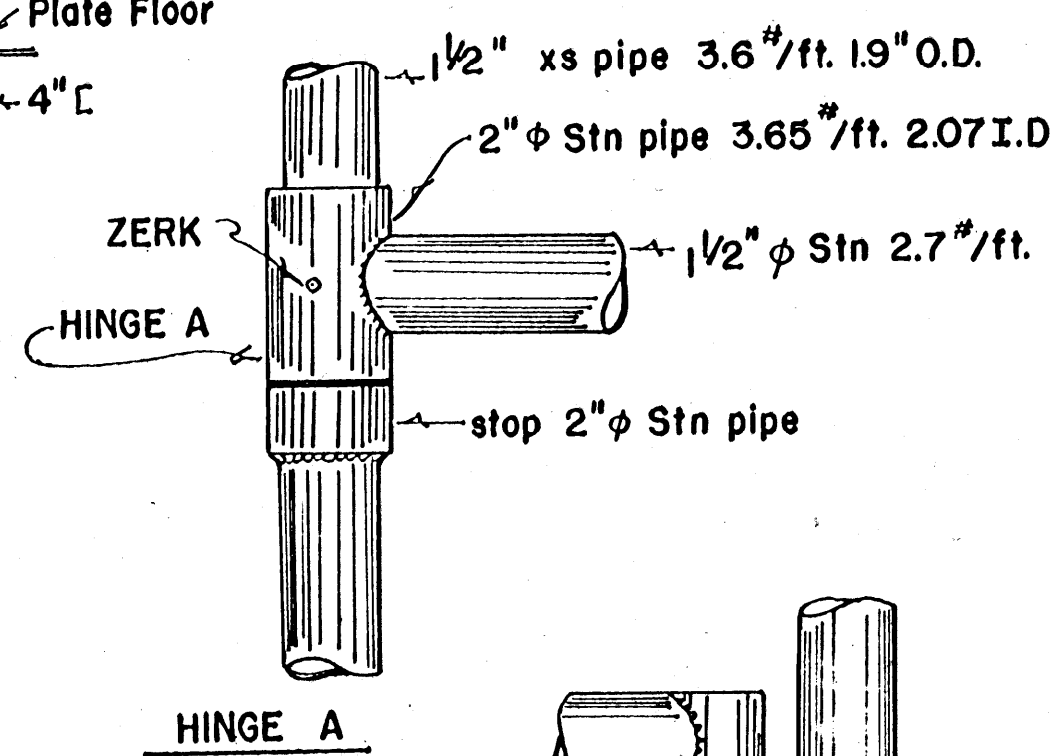
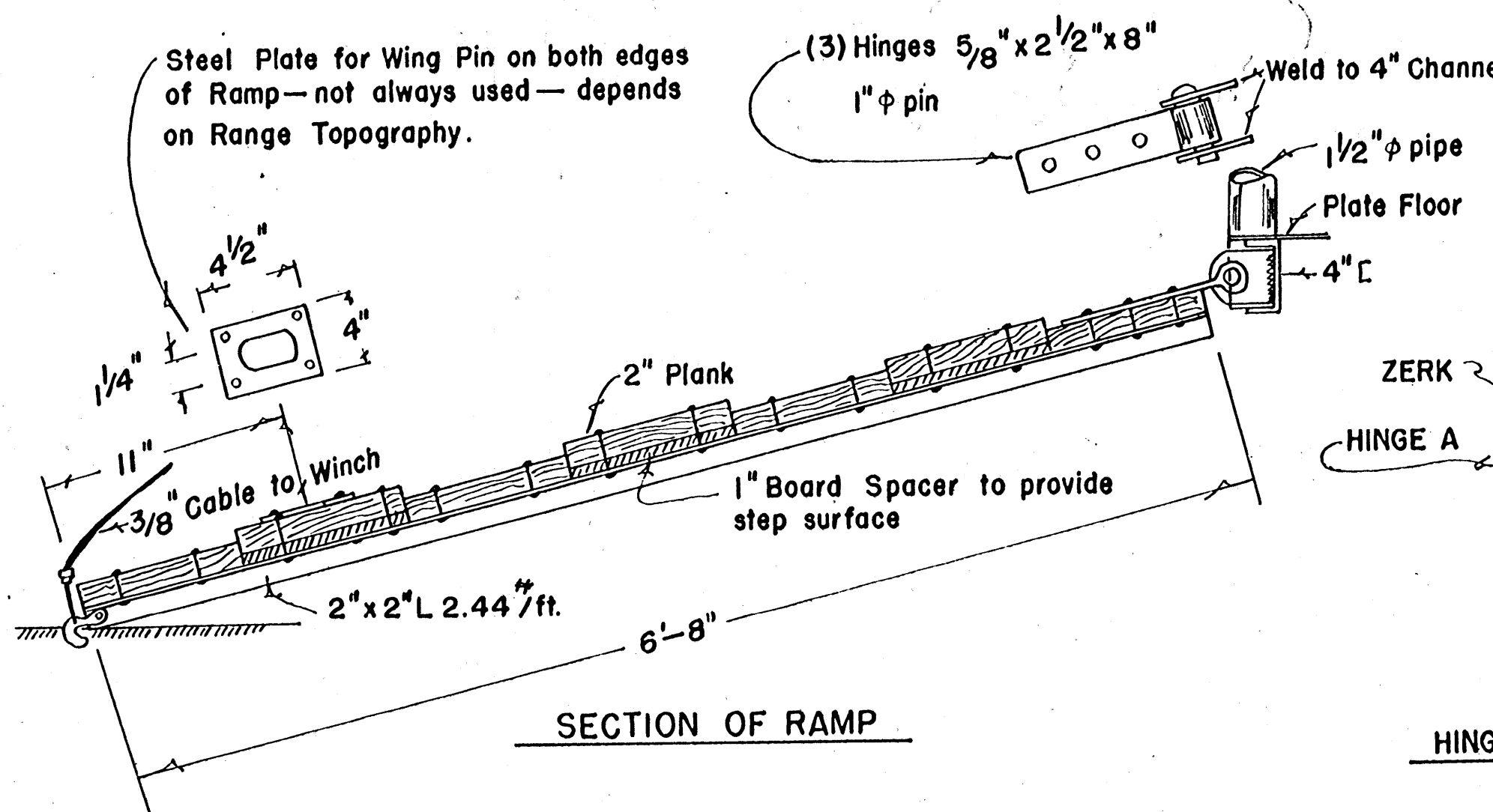
PIPE FRAME & COLLAR OR HINGE SCHEDULE ALTERNATES

POST

SHOWN  $1\frac{1}{2}$ "  $\phi$  xs pipe 3.6<sup>#</sup>/ft. 1.9" O.D.  
 ALT. 1. 2" Stn (or xs or xxs) 3.65<sup>#</sup>/ft. 2.375 O.D.  
 ALT. 2.  $2\frac{1}{2}$ " Stn pipe 5.79<sup>#</sup>/ft. 2.875" O.D.

HINGE OR COLLAR

2"  $\phi$  Stn pipe 3.65<sup>#</sup>/ft. 2.07" I.D.  
 $2\frac{1}{2}$ "  $\phi$  Stn pipe 5.79<sup>#</sup>/ft. 2.47 I.D.  
 3"  $\phi$  Stn pipe 7.62<sup>#</sup>/ft. 3.07 I.D.



- SYMBOLS
- $\phi$  = DIAMETER
  - O.D. = OUTSIDE DIAMETER
  - I.D. = INSIDE DIAMETER
  - L = ANGLE
  - C = CHANNEL
  - Stn = STANDARD
  - xs = EXTRA STRONG
  - xxs = DOUBLE EXTRA STRONG

COOPERATIVE EXTENSION WORK IN  
 AGRICULTURE AND HOME ECONOMICS  
 STATE OF MISSISSIPPI  
 MISSISSIPPI STATE UNIVERSITY  
 AND  
 UNITED STATES DEPARTMENT OF AGRICULTURE COOPERATING

PORTABLE CORRAL TRANSPORT

ARIZ.	'68	EX. 6041	SHEET 3 OF 3
-------	-----	----------	--------------