

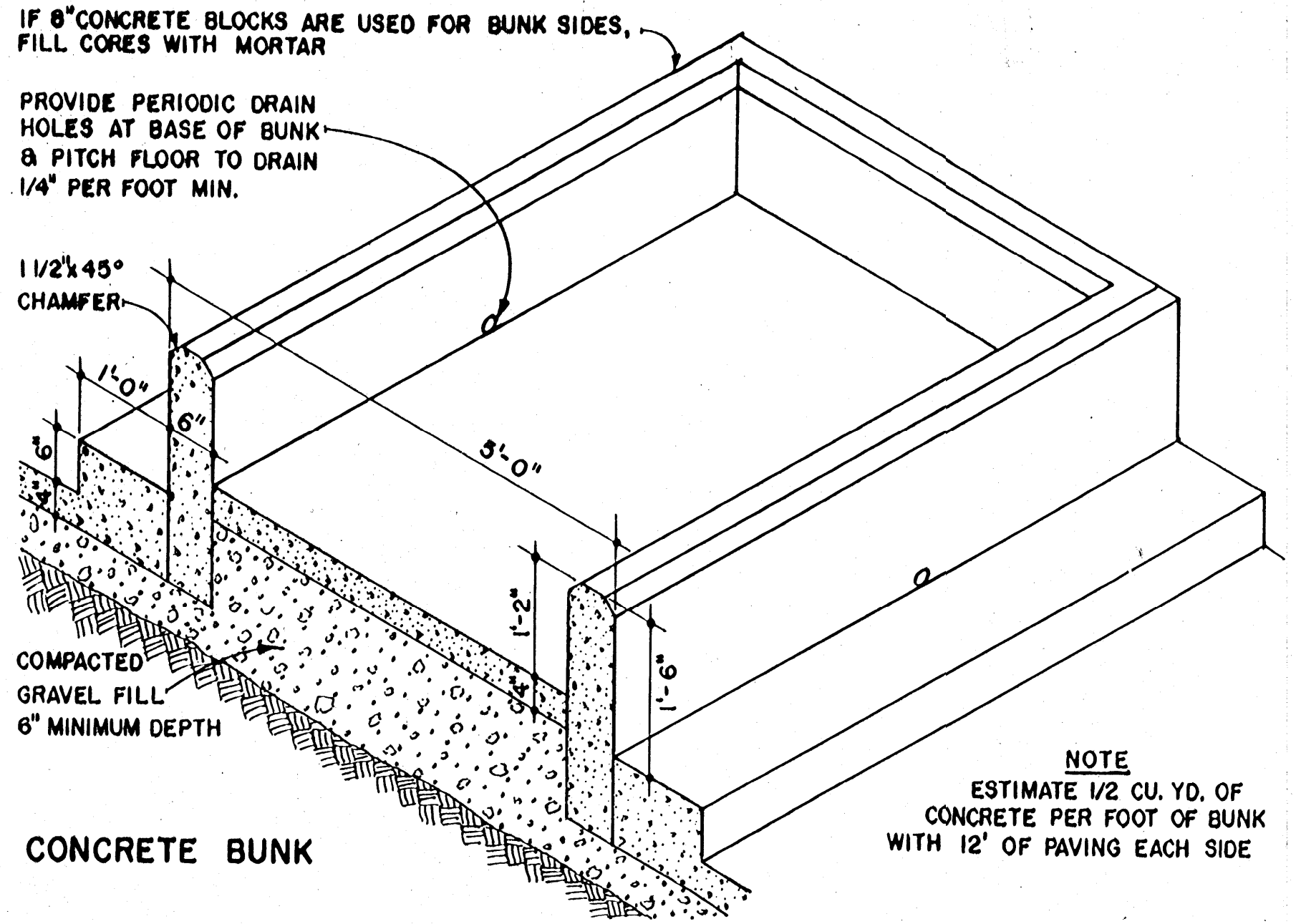
CROSS SECTION
SCALE: 3/4" = 1'-0"

BILL OF MATERIALS
10'-0" LONG BUNK

ITEM	DESCRIPTION	AMOUNT
CONCRETE	BUNK-SIDES, BOTTOM	1.4 CU. YDS.
CONCRETE PAVING	12' WIDE-BOTH SIDES	3.75 CU. YDS.
PLANK	2" x 10" x 10'-0"	2
ANGLES	1 1/2" x 1 1/2" x 2'-0"	4
REINFORCING	*3 Ø ROD	40 FEET
	*2 Ø ROD	33 FEET
BOLTS	CARRIAGE 1/2" x 3"	8

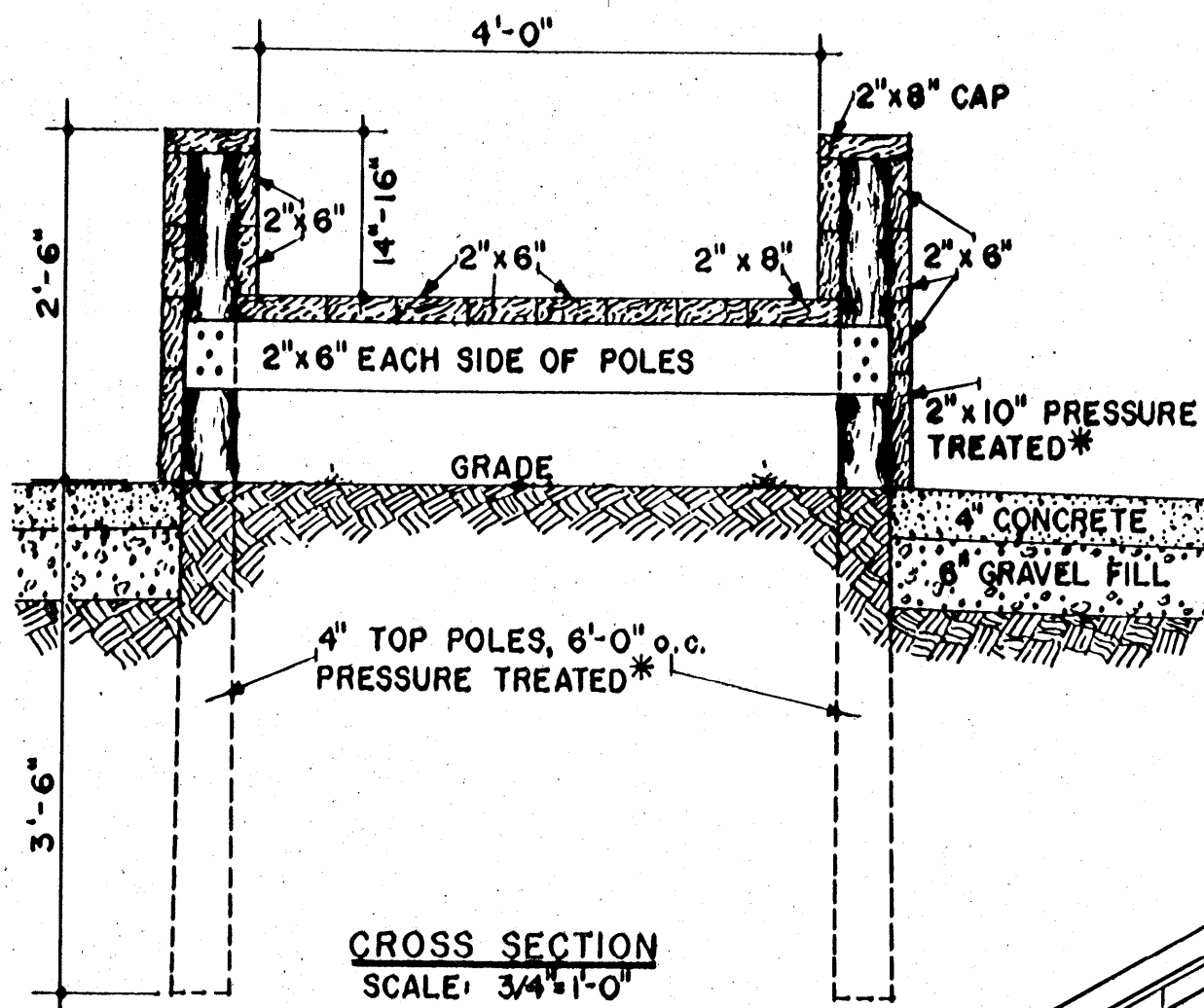
1. REMOVE ALL TOPSOIL AND ORGANIC MATERIAL PRIOR TO PLACEMENT OF GRAVEL FILL.
2. USE AIR-ENTRAINED CONCRETE TO REDUCE SCALING AND FROST ACTION ON THE SURFACE.

REINFORCED CONCRETE BUNK



CONCRETE BUNK

NOTE
ESTIMATE 1/2 CU. YD. OF CONCRETE PER FOOT OF BUNK WITH 12' OF PAVING EACH SIDE

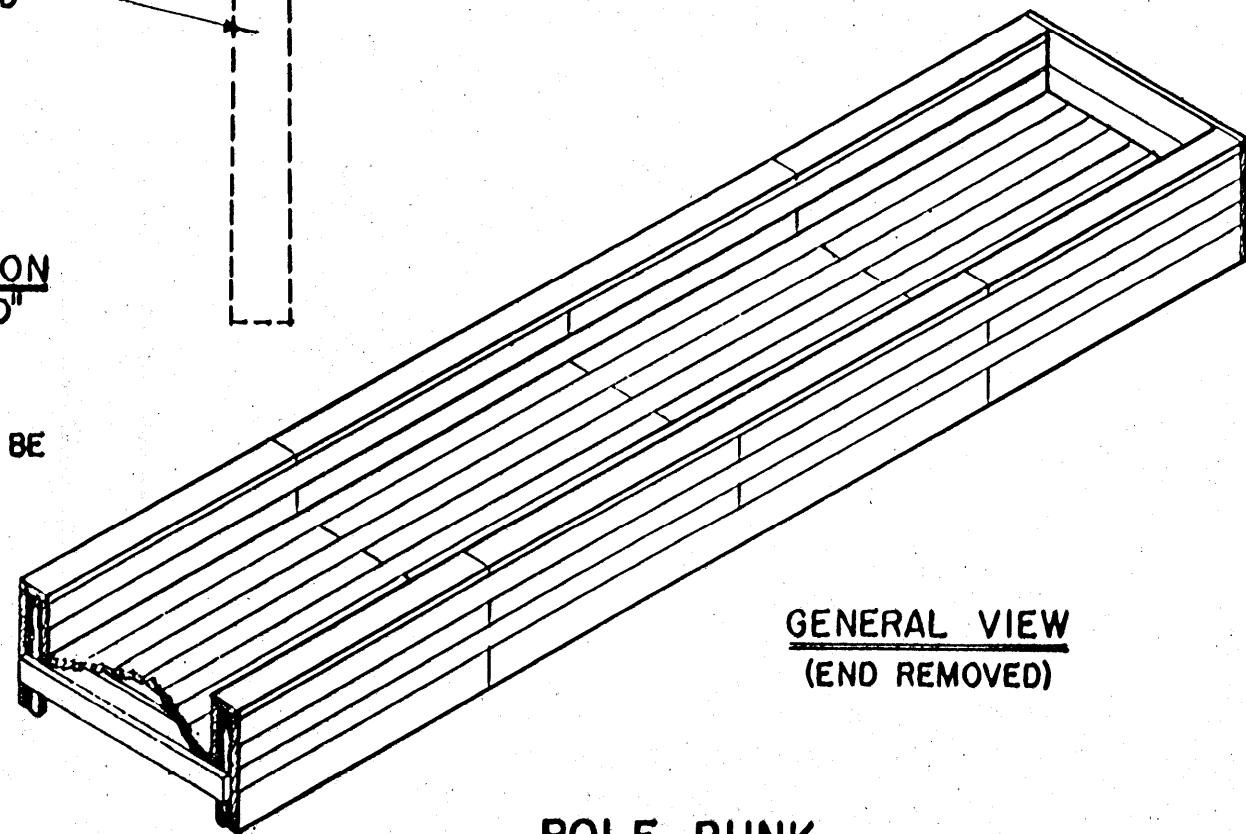


CROSS SECTION
SCALE: 3/4" = 1'-0"

BILL OF MATERIALS
60'-0" LONG BUNK

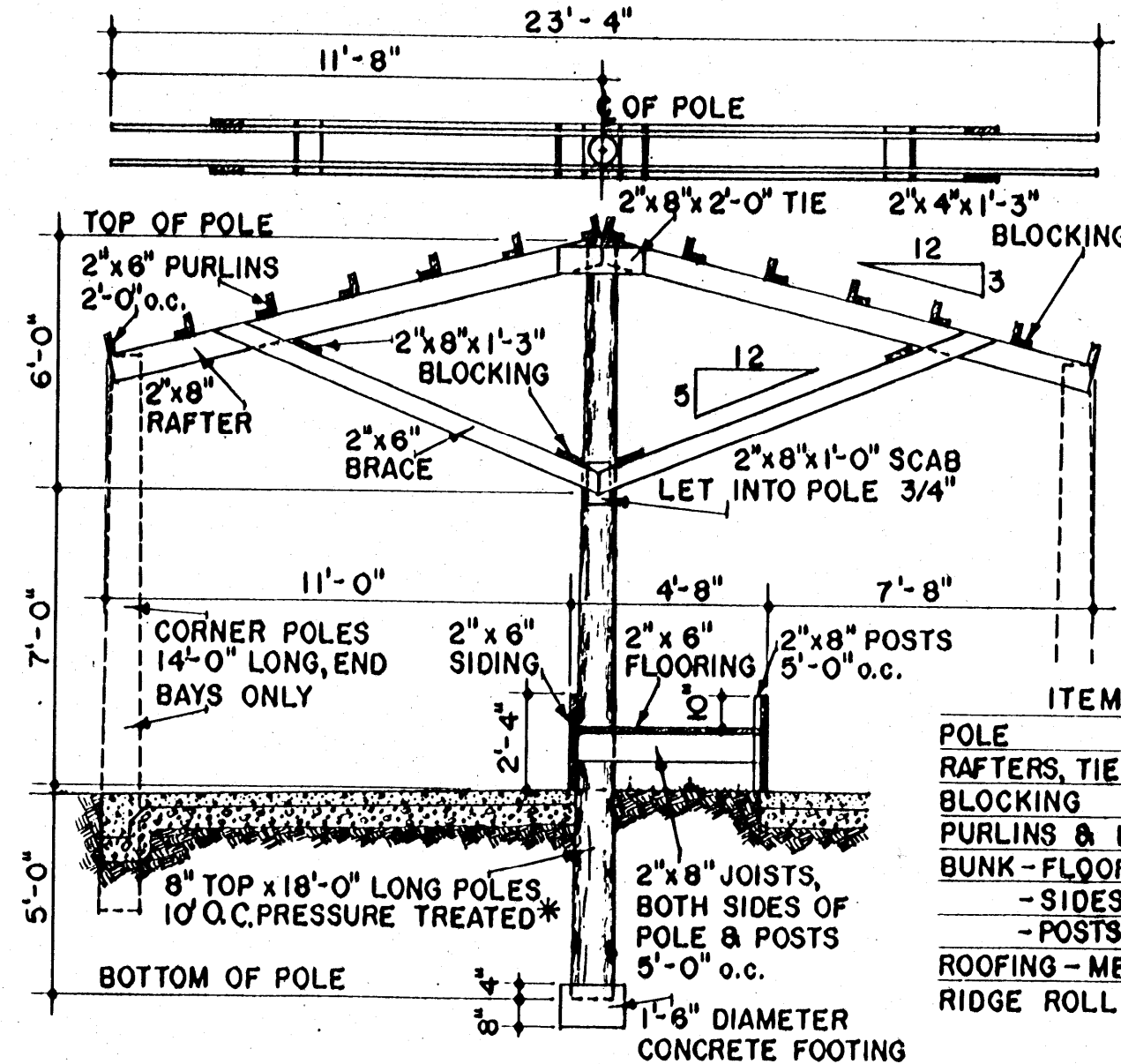
ITEM	SIZE	PCS.
POLES	4" TOP x 6'-0" LONG	22
JOISTS	2" x 6" x 5'-0"	22
FLOORING	2" x 6" x 12'-0"	30
	2" x 8" x 12'-0"	10
SIDES	2" x 6" x 12'-0"	50
	2" x 10" x 12'-0"	10
CAP	2" x 8" x 12'-0"	10
ENDS	2" x 6" x 5'-4"	4
	2" x 8" x 5'-4"	2
	2" x 10" x 5'-4"	2

* PRESSURE TREATED MATERIAL SHALL BE CONSTRUCTION GRADE DOUGLAS FIR OR EQUAL & SHALL BE PRESSURE TREATED TO A PRESERVATIVE RETENTION OF 5-7 LBS PER CUBIC FOOT AS PER A.W.P.A. STANDARDS



GENERAL VIEW
(END REMOVED)

POLE BUNK



CROSS SECTION
SCALE: 1/4" = 1'-0"

UMBRELLA BUNK

NOTE:
BUILD RAFTER-BRACE FRAME AS A UNIT BEFORE FASTENING TO POLES. BUILD ROOF PANELS AS A 12' x 10' UNIT.

BILL OF MATERIALS
10'-0" LONG BUNK

ITEM	SIZE	PCS.
POLE	8" TOP x 18'-0" LONG	1
RAFTERS, TIES, SCABS	2" x 8" x 12'-0"	5
BLOCKING	2" x 4" x 16'-0"	1
PURLINS & BRACES	2" x 6" x 10'-0"	18
BUNK-FLOOR	2" x 8" x 10'-0"	7
- SIDES	2" x 6" x 10'-0"	10
- POSTS & JOISTS	2" x 8" x 14'-0"	2
ROOFING - METAL	240 SQ. FT.	
RIDGE ROLL	10 LINEAL FT.	

COOPERATIVE EXTENSION WORK IN AGRICULTURE AND HOME ECONOMICS

AND UNITED STATES DEPARTMENT OF AGRICULTURE COOPERATING

SILAGE FEED BUNKS

CONN. '67 EX. 6012 SHEET 1 OF 1

REVISED '88