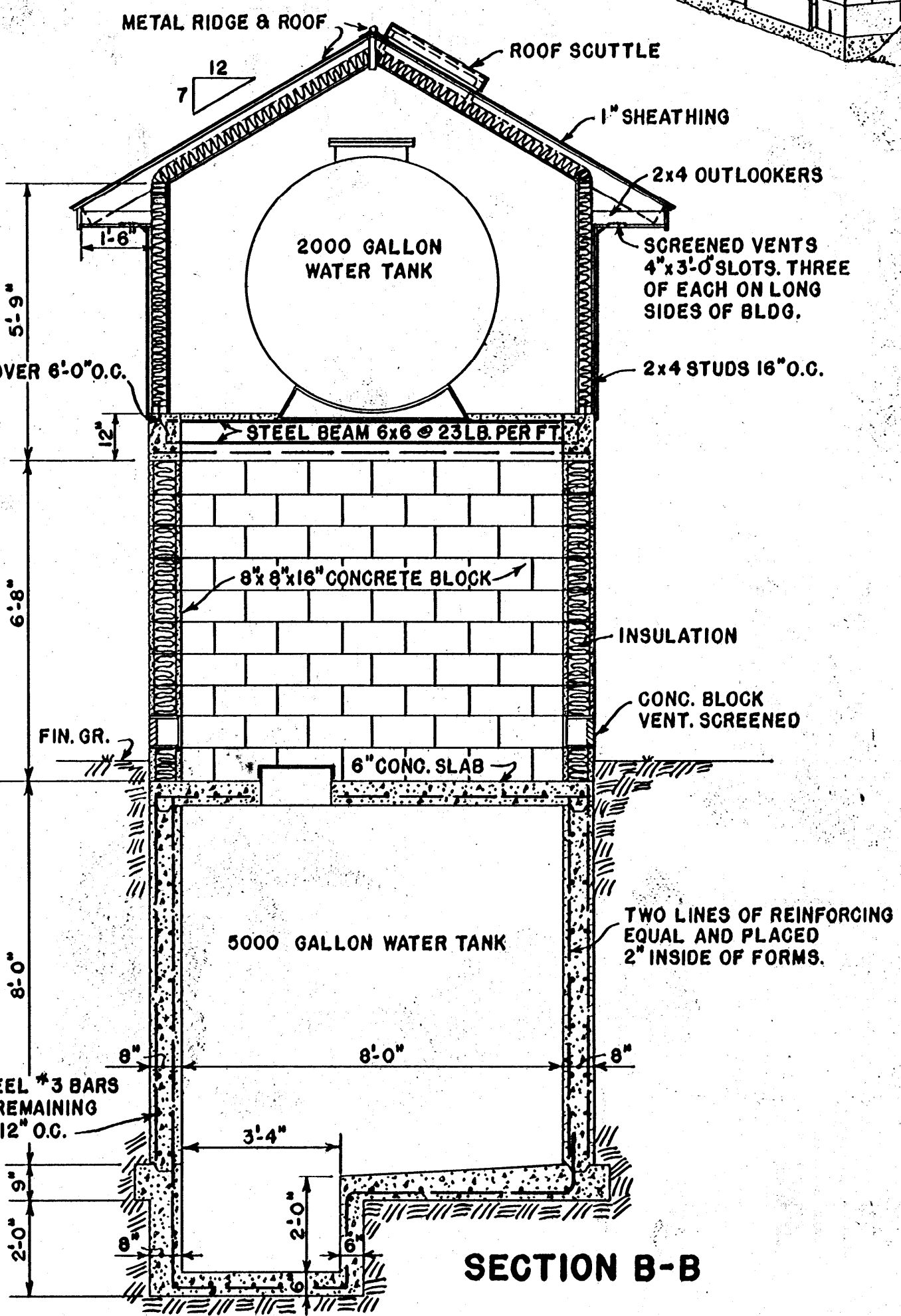
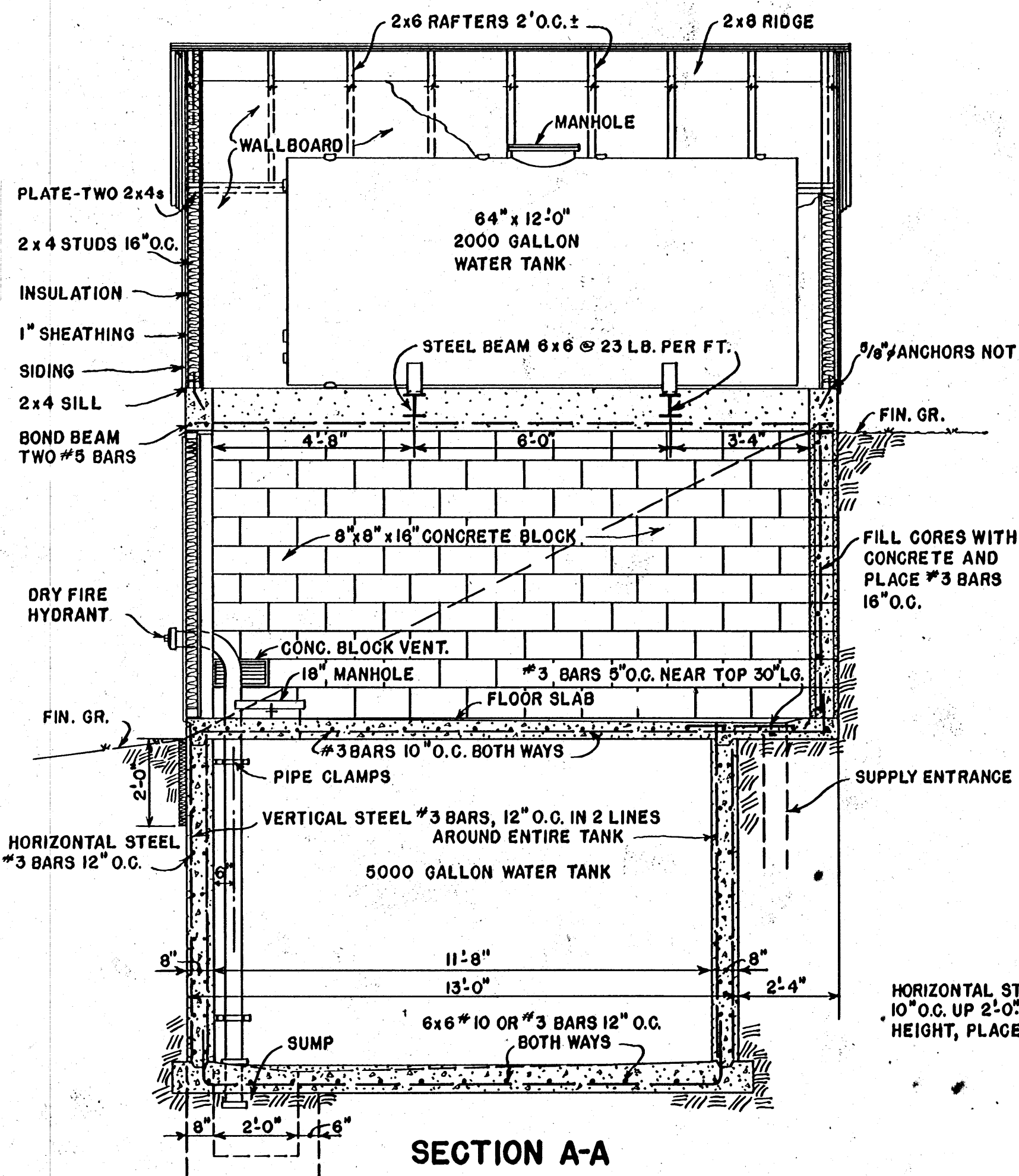
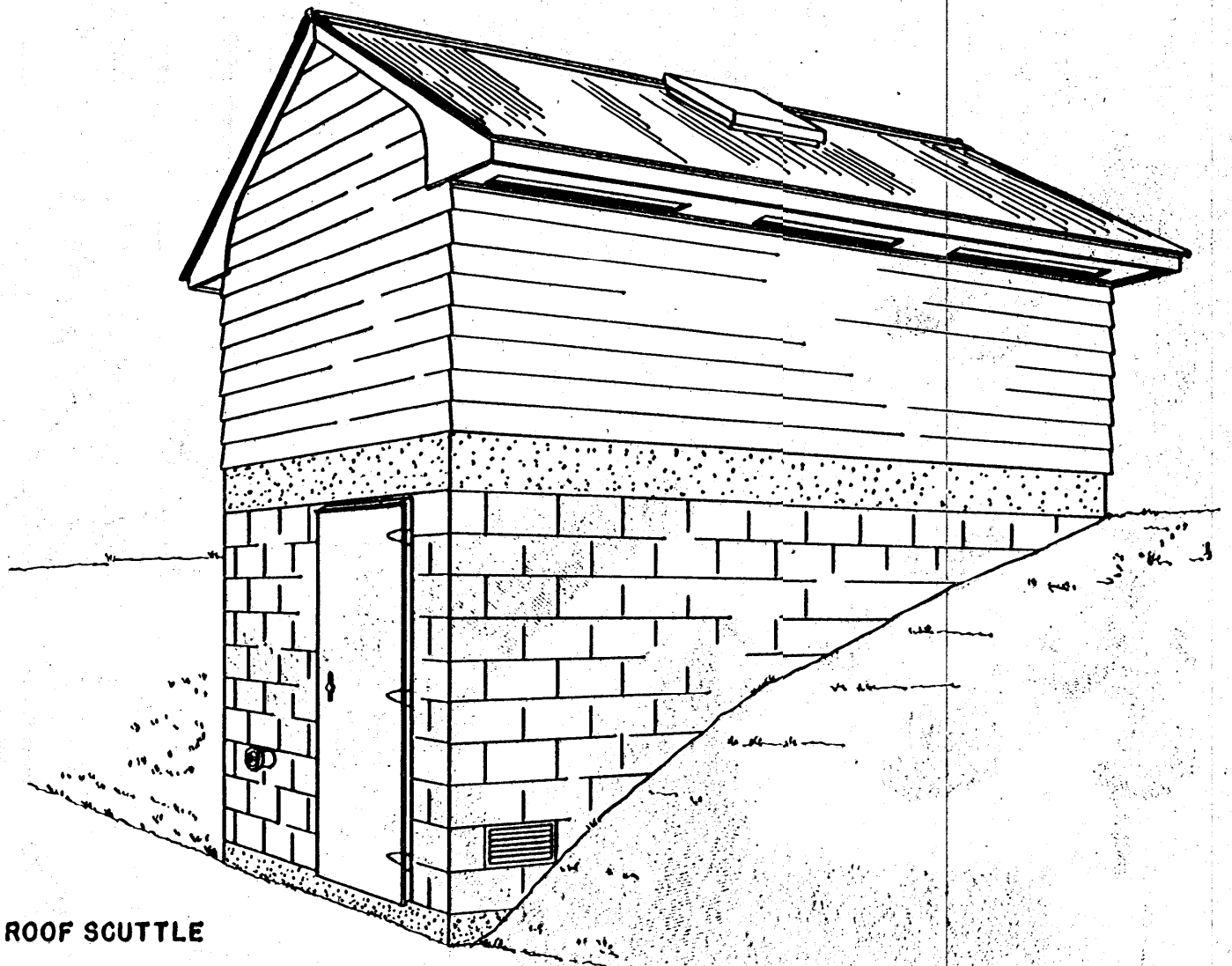


DISTRIBUTION MANIFOLD 2" 150 LB. ABS (ACRYLONTRILE BUTADIENE-STYRENE). ALL TEES 2" x 2" x 2". BUSH TO REDUCE. MINIMUM PIPE SIZE FOR DISTRIBUTION 1 1/4"



NOTES:
 CHECK INSURANCE REGULATIONS FOR WATER STORAGE REQUIREMENTS. PROVIDE GROUNDED DOUBLE CONVENIENCE OUTLETS.
 WALLS AND ROOF OF BUILDING TO BE INSULATED IN LOCALITIES SUBJECT TO FREEZING TEMPERATURES.
 EQUIP WITH ADEQUATE LIGHTNING PROTECTION SYSTEM IN AREAS WHERE NEEDED.

SCALE: 3/8" = 1'-0" UNLESS OTHERWISE NOTED.

COOPERATIVE EXTENSION WORK IN AGRICULTURE AND HOME ECONOMICS

STATE OF MISSISSIPPI

MISSISSIPPI STATE UNIVERSITY

AND

UNITED STATES DEPARTMENT OF AGRICULTURE COOPERATING

FARMSTEAD WATER SUPPLY SYSTEM

USDA '63 EX. 5963 SHEET 1 OF 1