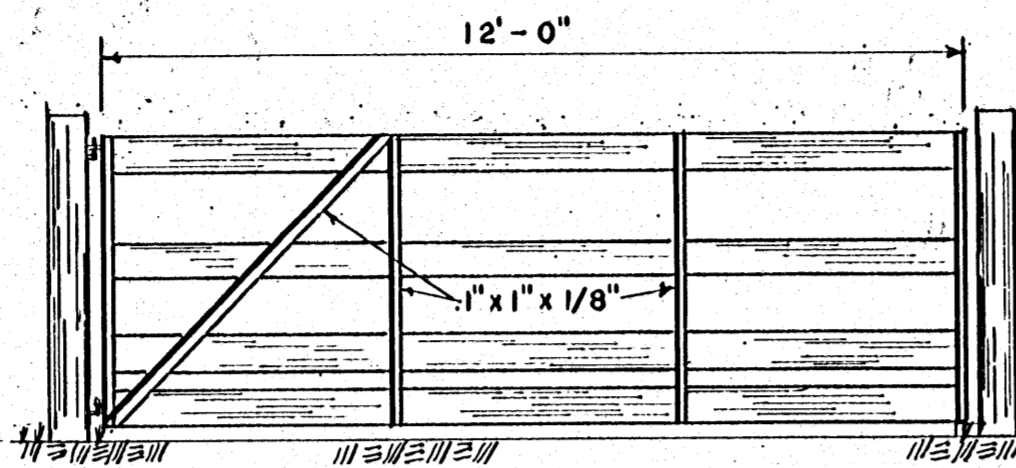
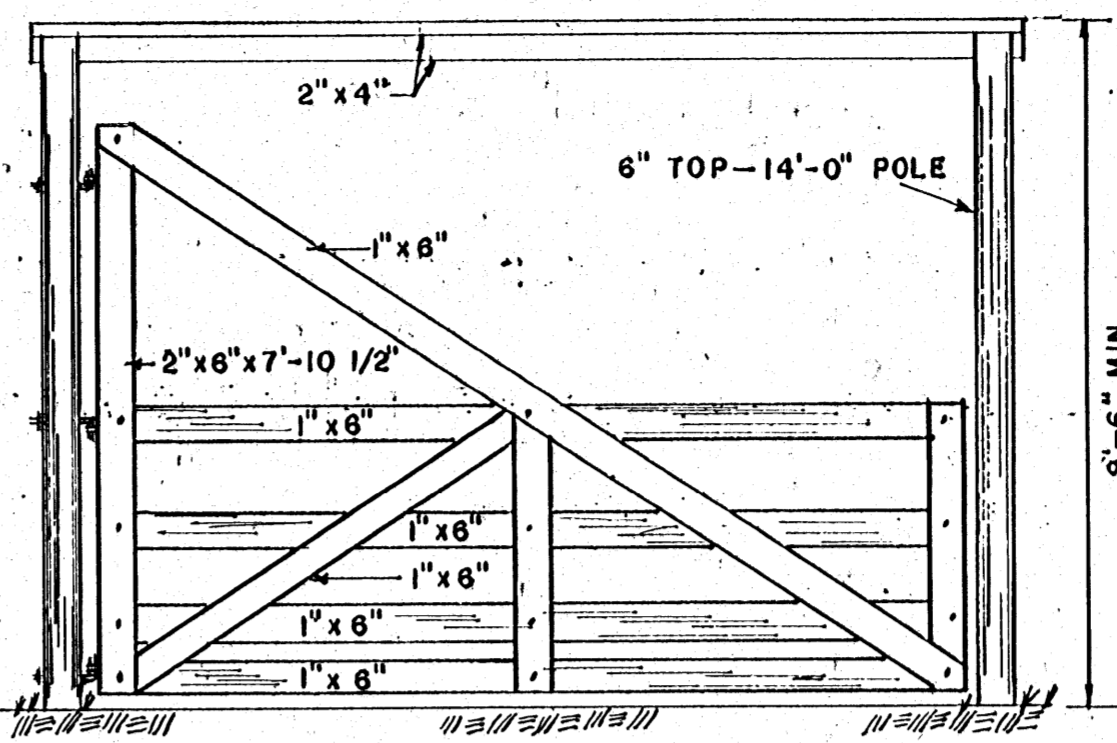


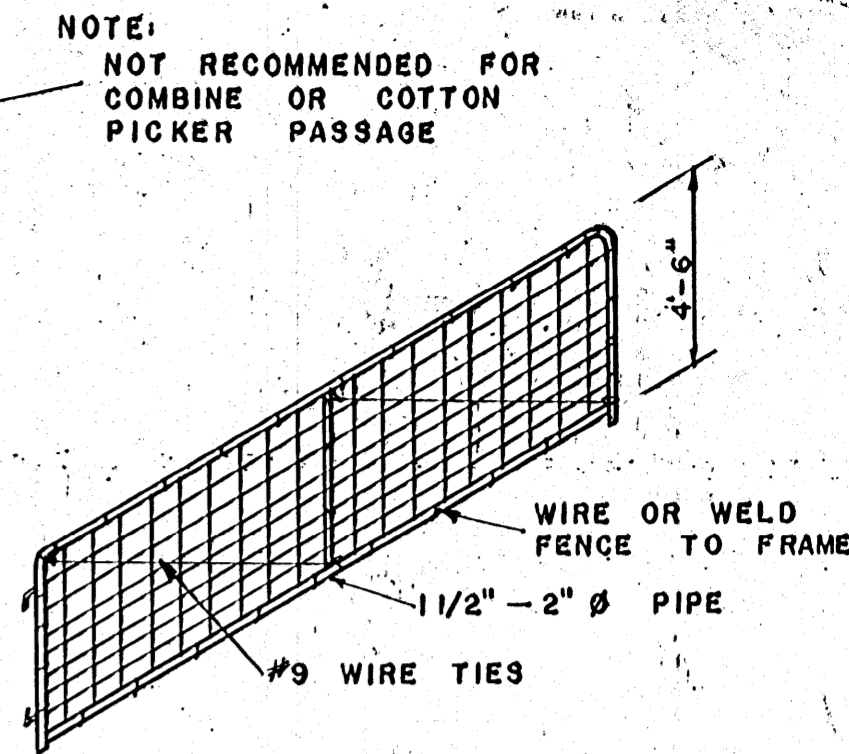
WOOD



STEEL



12' TO 16' GATE

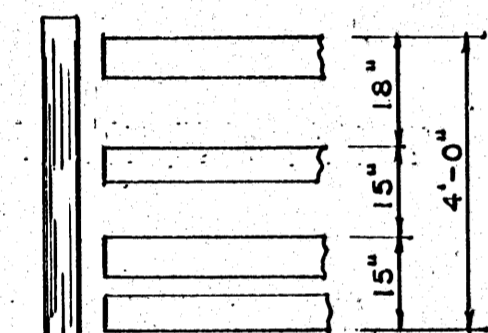


**WIRE & PIPE
10' TO 14' LONG**

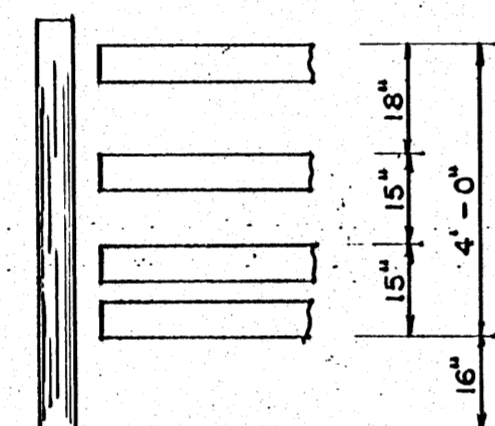
BLOCK ON POSTS TO SUPPORT LONG GATES

9'-6" MIN. OR HEIGHT NEEDED FOR EQUIPMENT PASSAGE

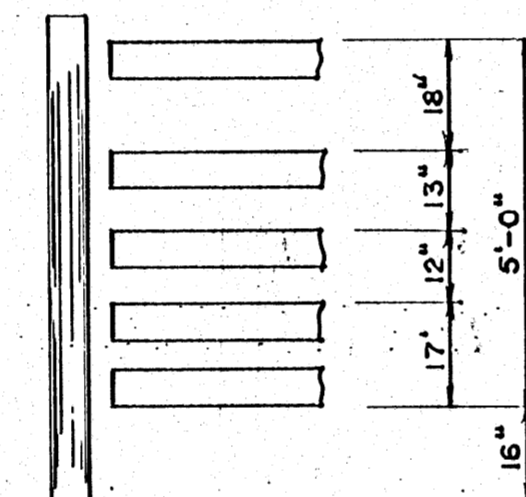
NOTE: NOT RECOMMENDED FOR COMBINE OR COTTON PICKER PASSAGE



GATE FOR 4'-0" LINE FENCE

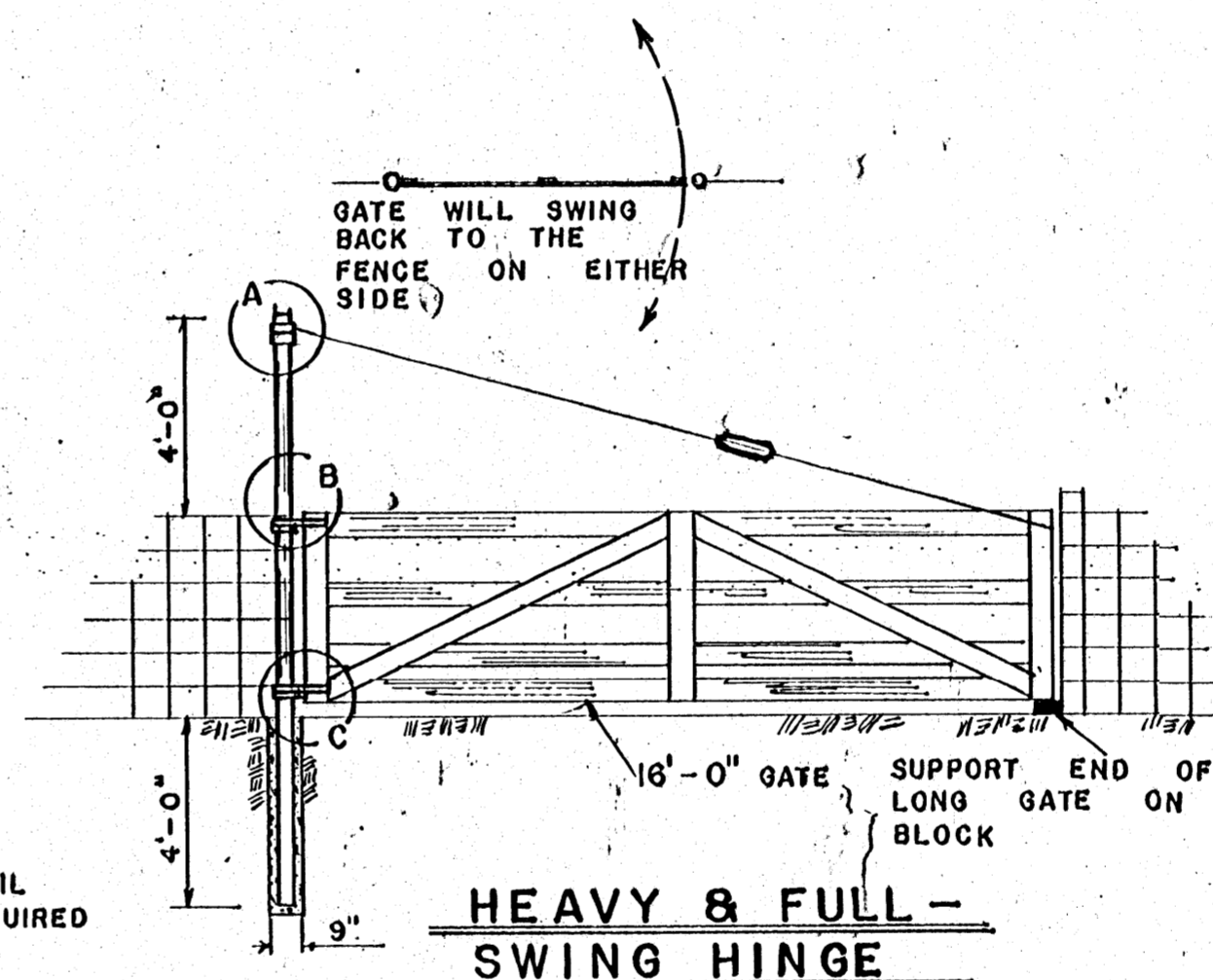


GATE FOR 5'-0" CORRAL FENCE

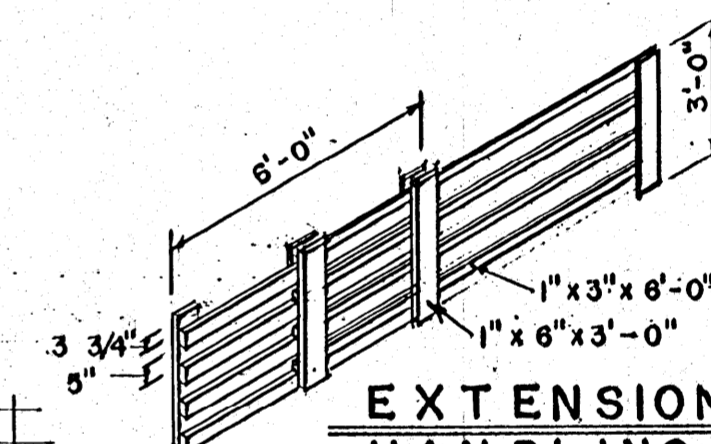


GATE FOR 6'-0" CORRAL FENCE

DOUBLE RAIL WHERE REQUIRED



HEAVY & FULL-SWING HINGE



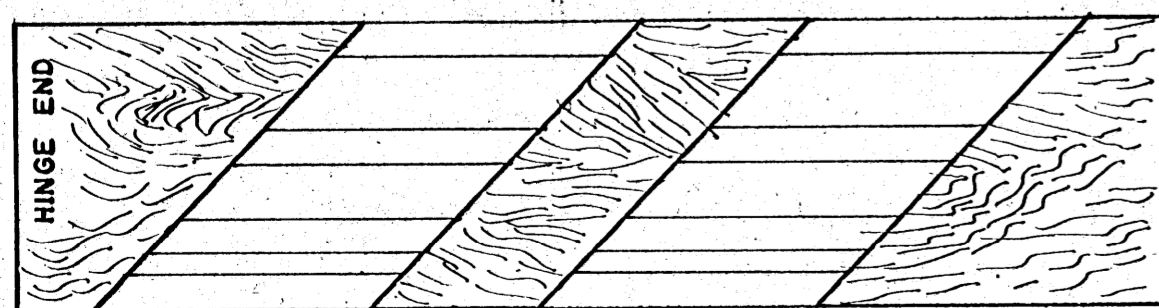
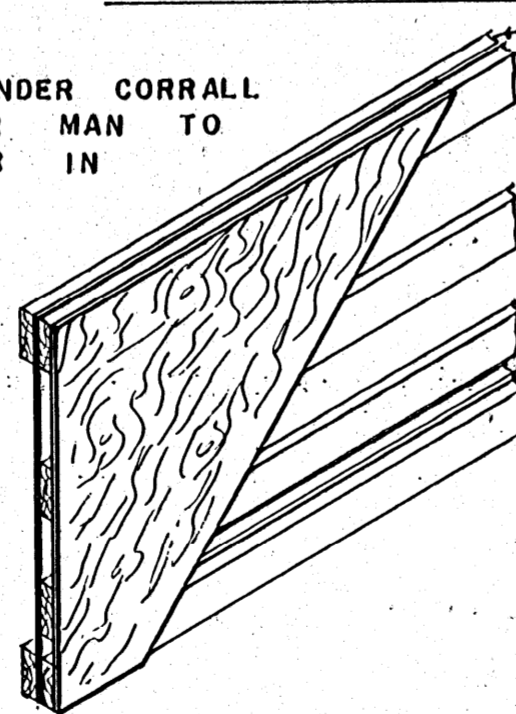
EXTENSION HANDLING GATE

NOTE: KNOCK IN TYPE GREASE FITTING MAY BE USED FOR EASIER SWING & LONGER LIFE OF PIPE.

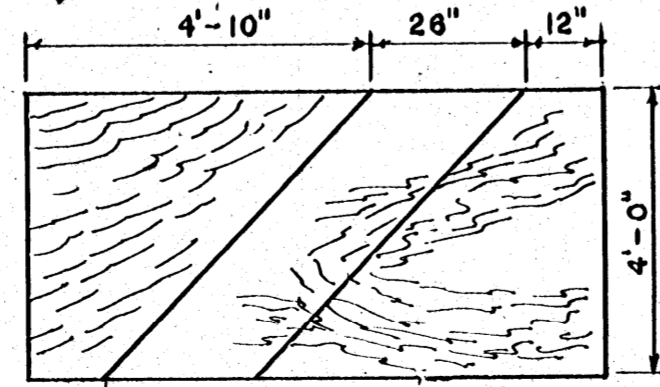
RAIL SIZES	GATE HEIGHT	GATE WIDTH
LINE FENCES	4'-0"	10' 12' 14' 16' 18' 20'
FEED LOTS	4'-0"	A B B B C C
CORRALS, YARDS	5'-0"	A B B B C C B C D D D E

NOTE: LEAVE 16" UNDER CORRAL FENCES FOR MAN TO ROLL UNDER IN EMERGENCY

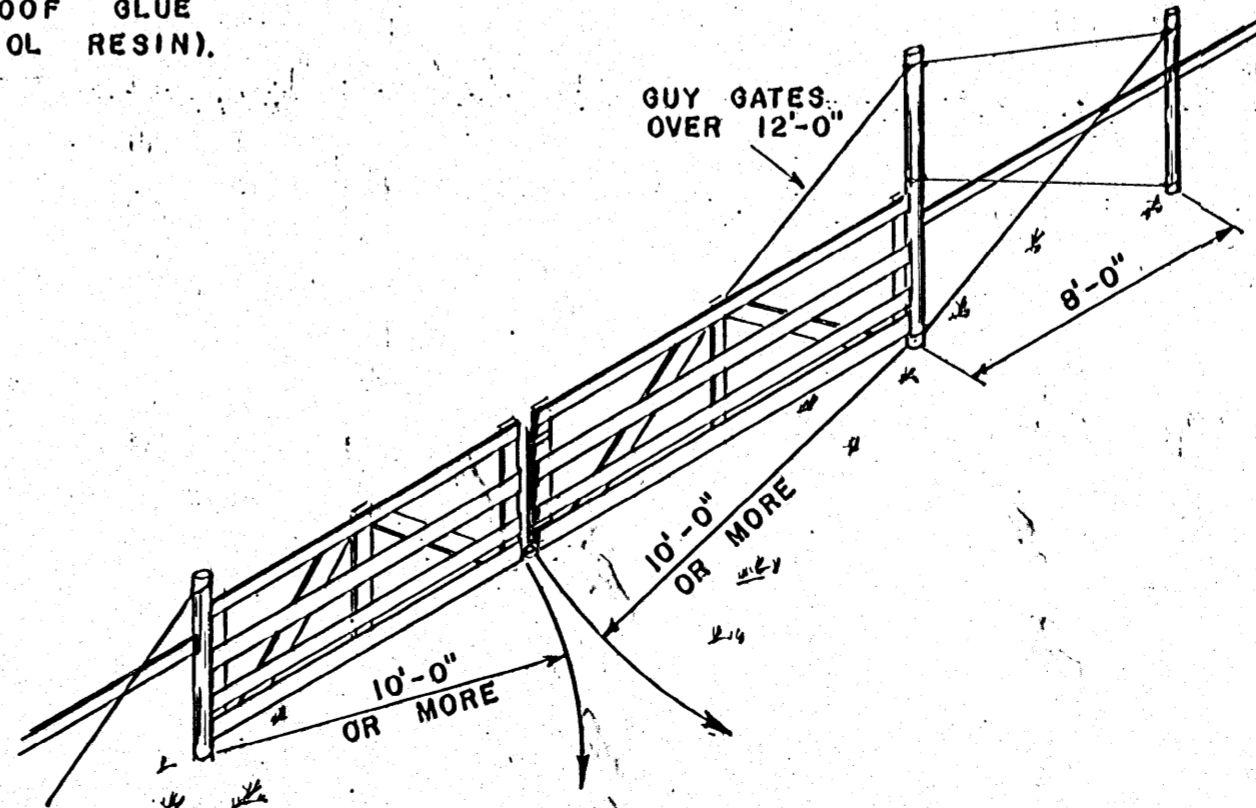
FASTEN PLYWOOD TO BOARDS WITH GALVANIZED OR DEFORMED NAILS & WATER-PROOF GLUE (RESORCINOL RESIN).



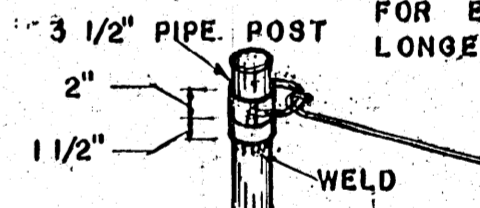
PLYWOOD GATE



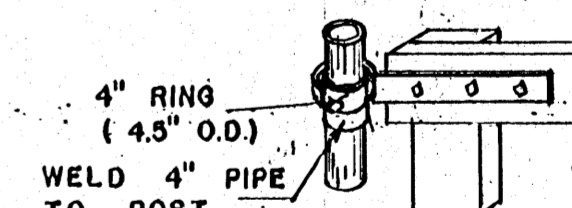
**PLYWOOD CUTTING DIAGRAM
3/8" CC EXTERIOR**



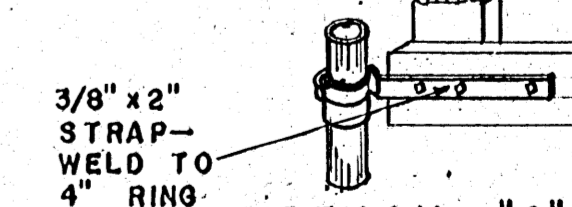
DOUBLE GATE



DETAIL "A"



DETAIL "B"



DETAIL "C"

GATES
 COOPERATIVE EXTENSION SERVICE
 STATE OF MISSISSIPPI
 MISSISSIPPI STATE UNIVERSITY
 AND
 UNITED STATES DEPARTMENT OF AGRICULTURE COOPERATING

DRAWN BY: R.F.W. CHECKED BY: L.M.
 DATE: JUNE '71 DWG. NO. 5961-B SHEET 1 OF 1