

LIGHT AND POWER

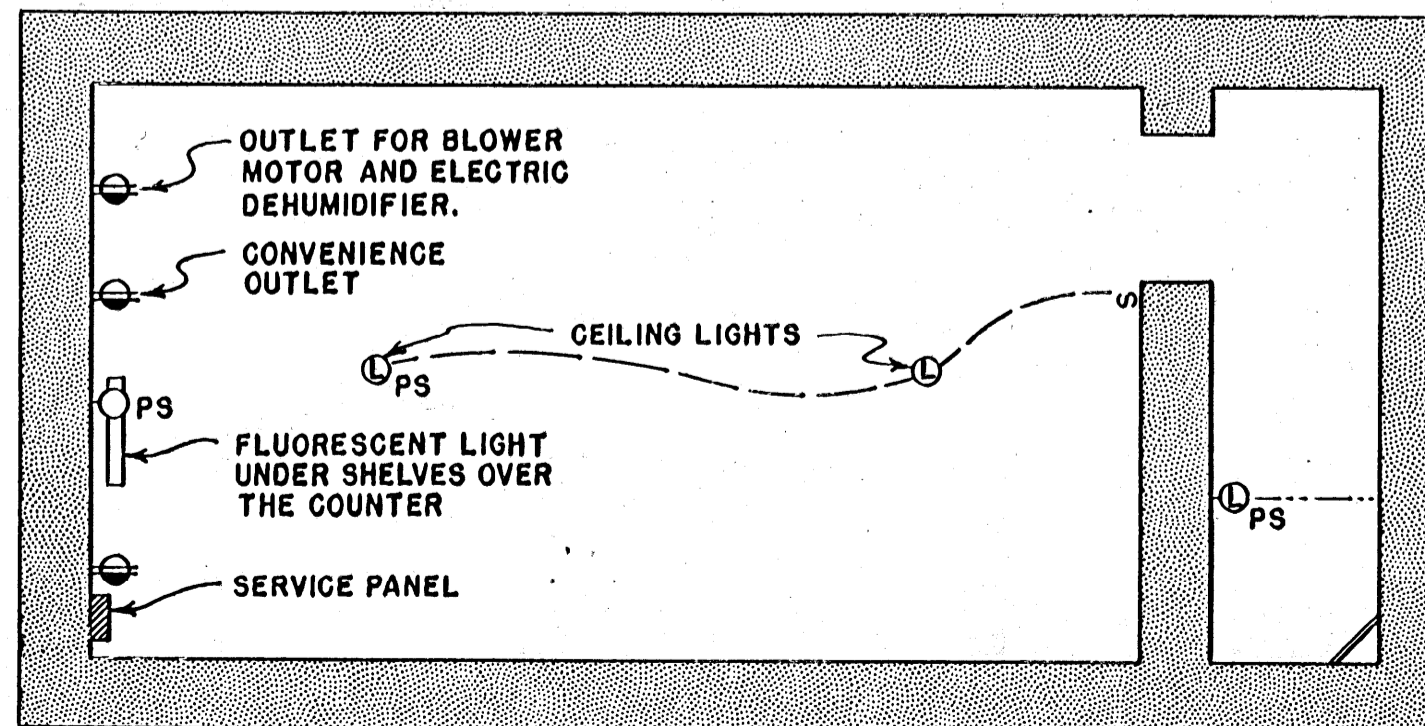
SERVICE ENTRANCE CABLE, TYPE UF, IS BURIED AT LEAST TWO FEET, LOOPED AND BROUGHT THROUGH WALL IN CONDUIT. PLUG CONDUIT WITH HYDRAULIC CEMENT.

SERVICE PANEL IS FUSED SAFETY SWITCH FOR TWO 20 AMPERE 120 VOLT CIRCUITS.

OUTLETS ARE SURFACE MOUNTED NON-METALLIC GROUNDING TYPE. CIRCUIT WIRING IS N₉ 12 UF.

SUGGESTED ELECTRICAL EQUIPMENT:
 TWO BURNER HOT PLATE.
 1600 WATT RESISTANCE HEATER WITH FAN.
 DEHUMIDIFIER (IN HUMID CLIMATES)

PROVIDE BATTERY OPERATED LANTERNS AND FLASHLIGHTS FOR USE IN CASE OF POWER FAILURE.



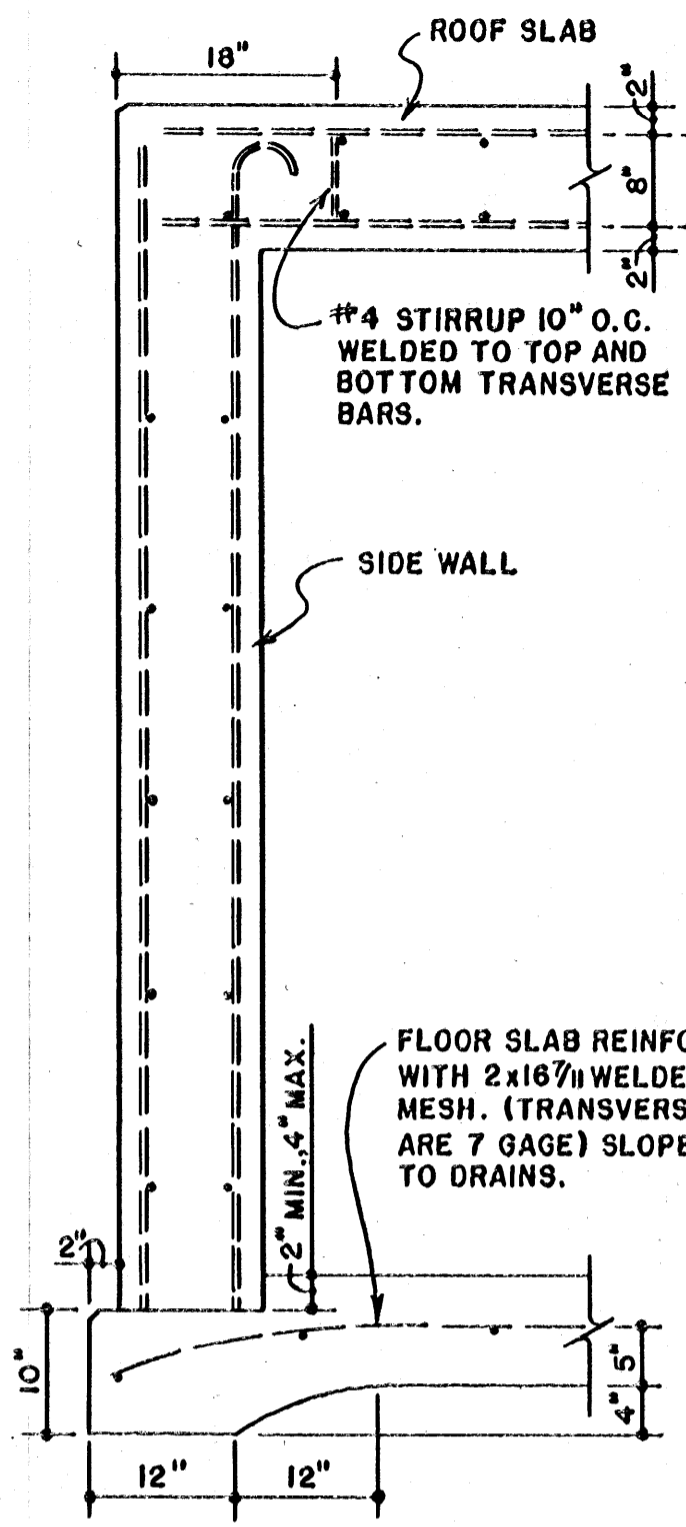
BERTHS ARE RECTANGULAR FRAMES OF 1" STD. PIPE WITH PLAIN ELBOWS. DOWEL AND PIN ONE END RAIL, OR USE LONG SCREW WITH CLOSE NIPPLE AND COUPLING FOR ASSEMBLY. COVER WITH 1/2" x 1" WELDED WIRE FABRIC, WITH TRANVERSE WIRES SPACED 1/2".

SCALE: 3/8" = 1'-0" EXCEPT AS NOTED.

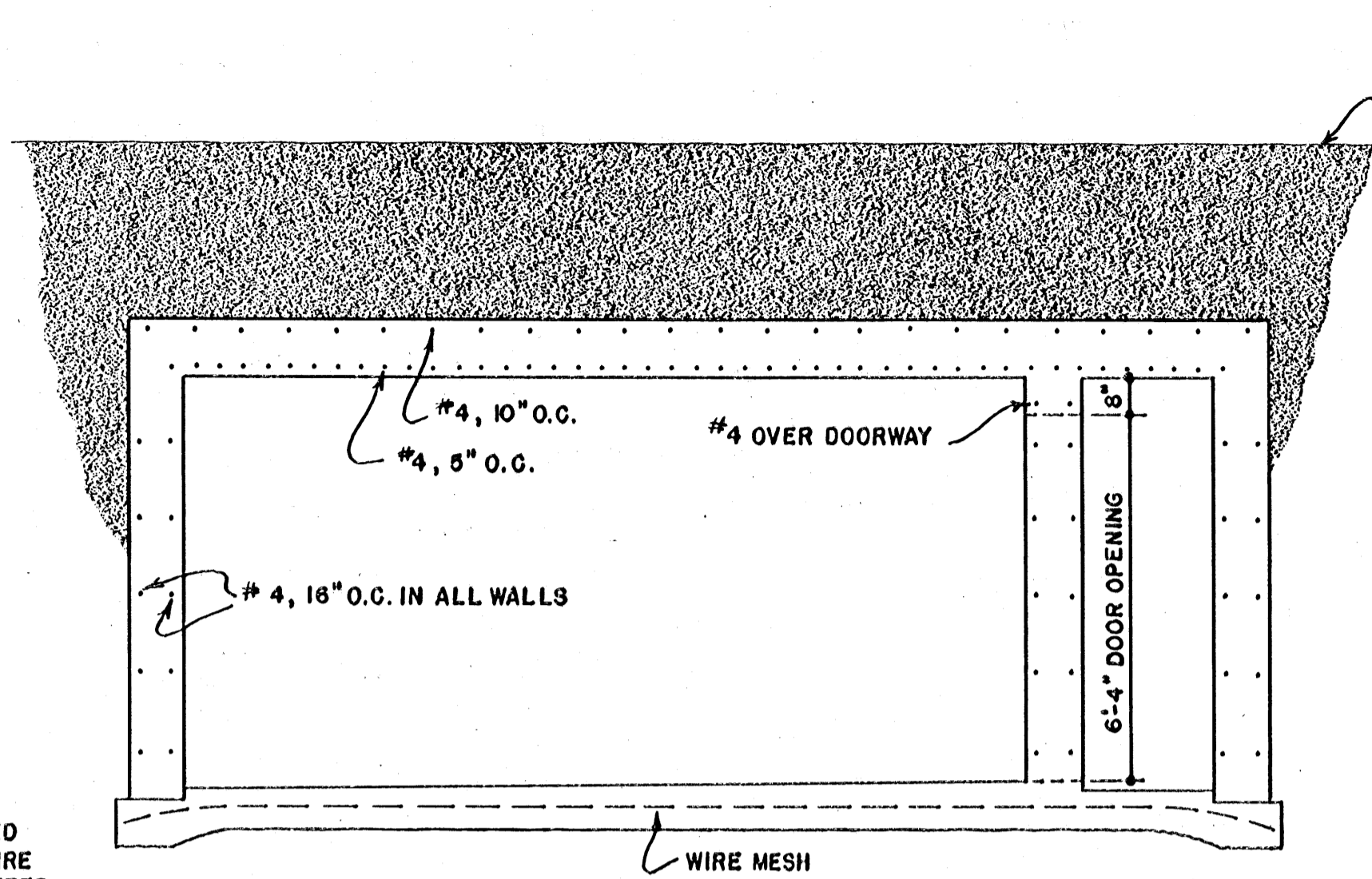
COOPERATIVE EXTENSION WORK IN AGRICULTURE AND HOME ECONOMICS
 STATE OF MISSISSIPPI
 MISSISSIPPI STATE UNIVERSITY
 AND UNITED STATES DEPARTMENT OF AGRICULTURE COOPERATING

BLAST AND FALLOUT SHELTER
 FOR SIX PEOPLE

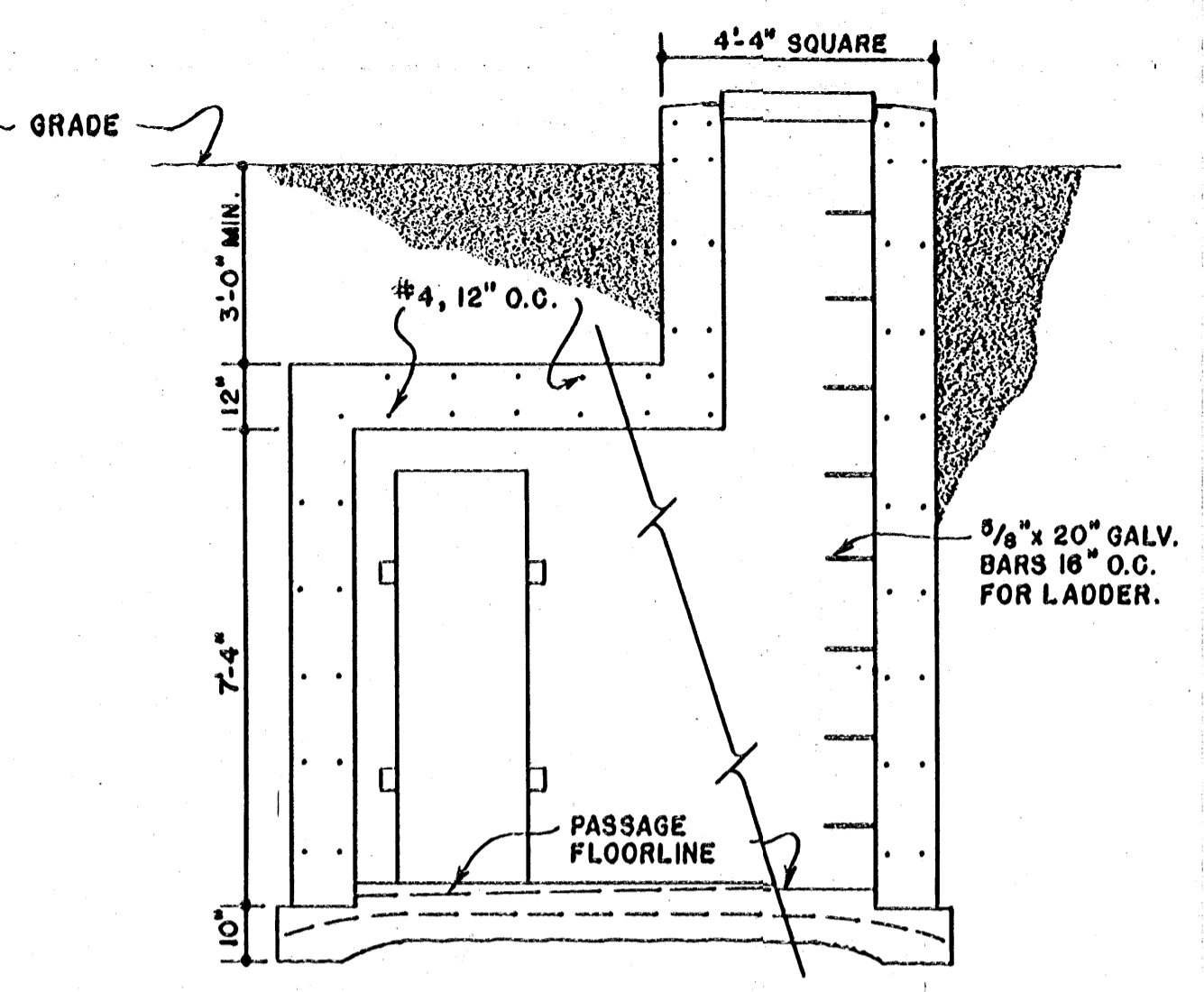
USDA '63 EX. 5957 SHEET 1 OF 4



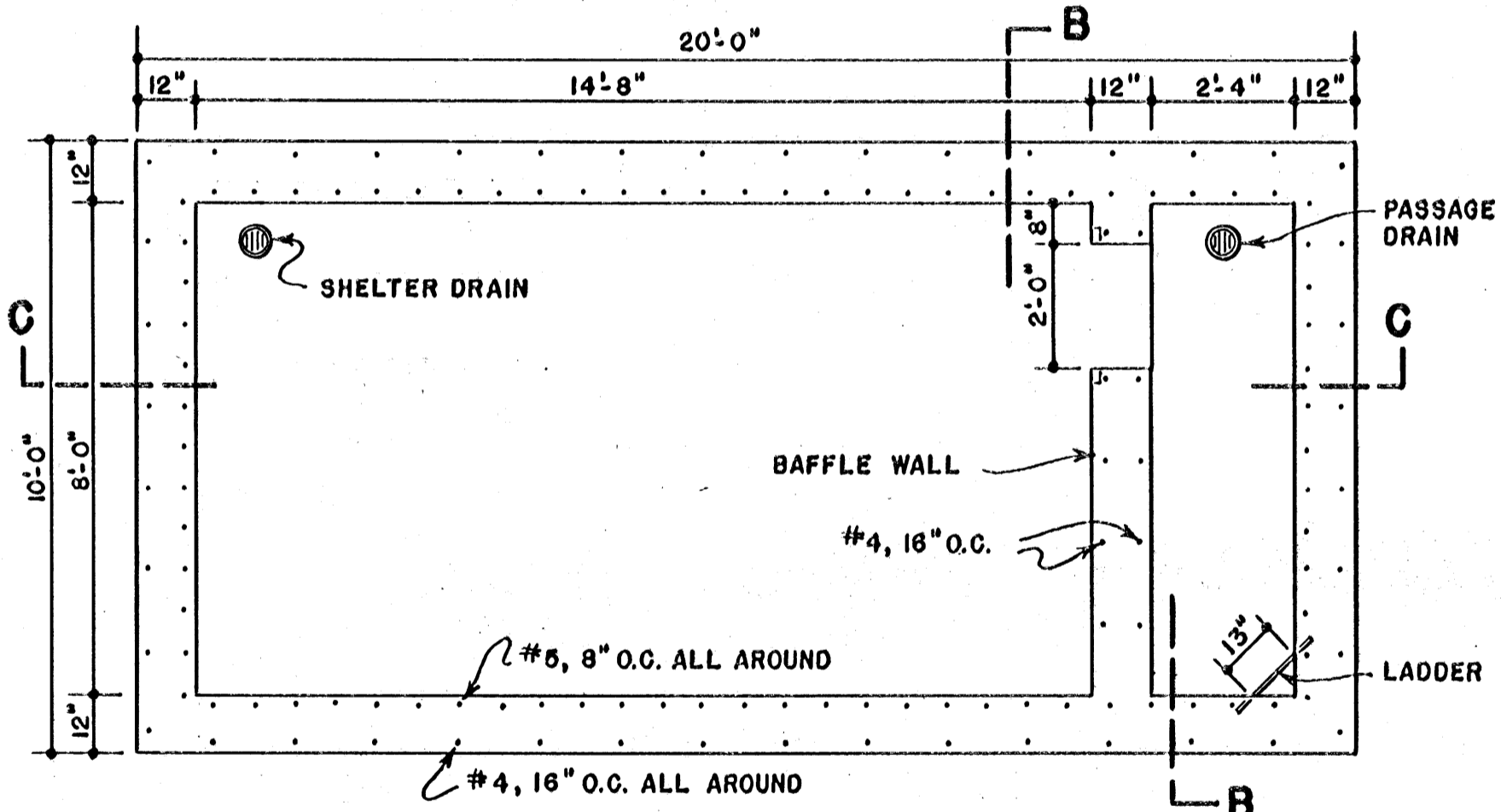
TYPICAL DETAIL
SCALE: 3/4" = 1'-0"



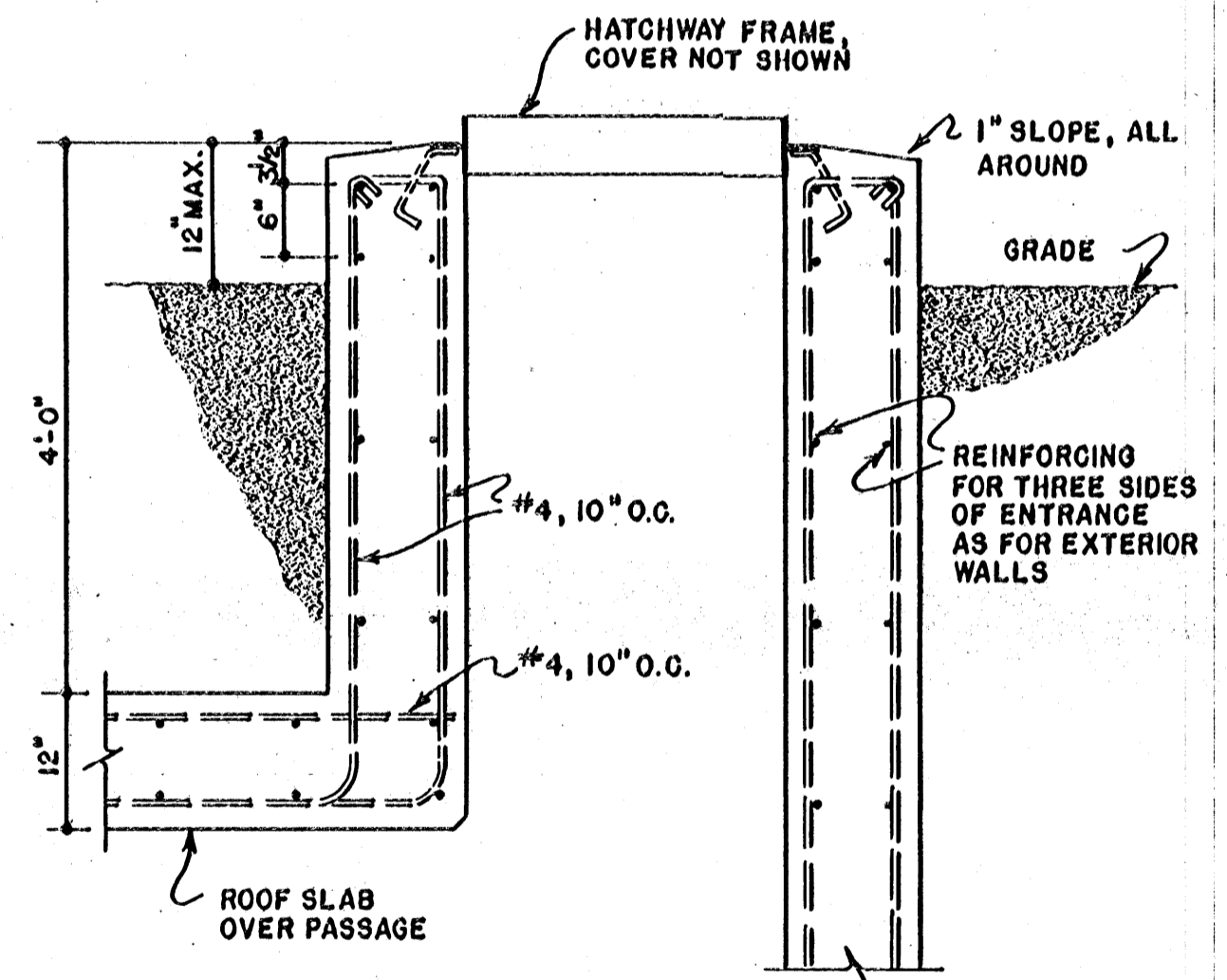
LONGITUDINAL SECTION C-C



TRANSVERSE SECTION B-B



PLAN



REINFORCING DETAIL

AT ENTRANCE
SCALE: 3/4" = 1'-0"

PROVIDE TRAPPED FLOOR DRAINS WHICH LEAD TO A GRAVEL-FILLED SUMP (NOT TO A SURFACE OUTLET). GRATINGS AND WATERTIGHT PLUGS ARE REQUIRED FOR BOTH DRAINS.

LAPS IN REINFORCING BARS SHALL BE AT LEAST 18 INCHES.

CONCRETE SHALL BE 1:2:3 MIX, WITH NOT OVER 5 1/2 GALLONS OF WATER PER SACK OF CEMENT.

CHAMFER OUTSIDE CORNERS 3/4".

PLACE A 6 MIL POLYETHYLENE VAPOR BARRIER UNDER THE FLOOR SLAB. USE A SHEET ABOUT 14 FEET WIDE SO THAT IT MAY LATER BE TURNED UP AGAINST THE OUTSIDE WALLS. AFTER THE FORMS ARE STRIPPED, APPLY TWO COATS OF BITUMINOUS WATERPROOFING TO THE ENTIRE STRUCTURE UP TO GRADE LINE, AND COVER WITH POLYETHYLENE.

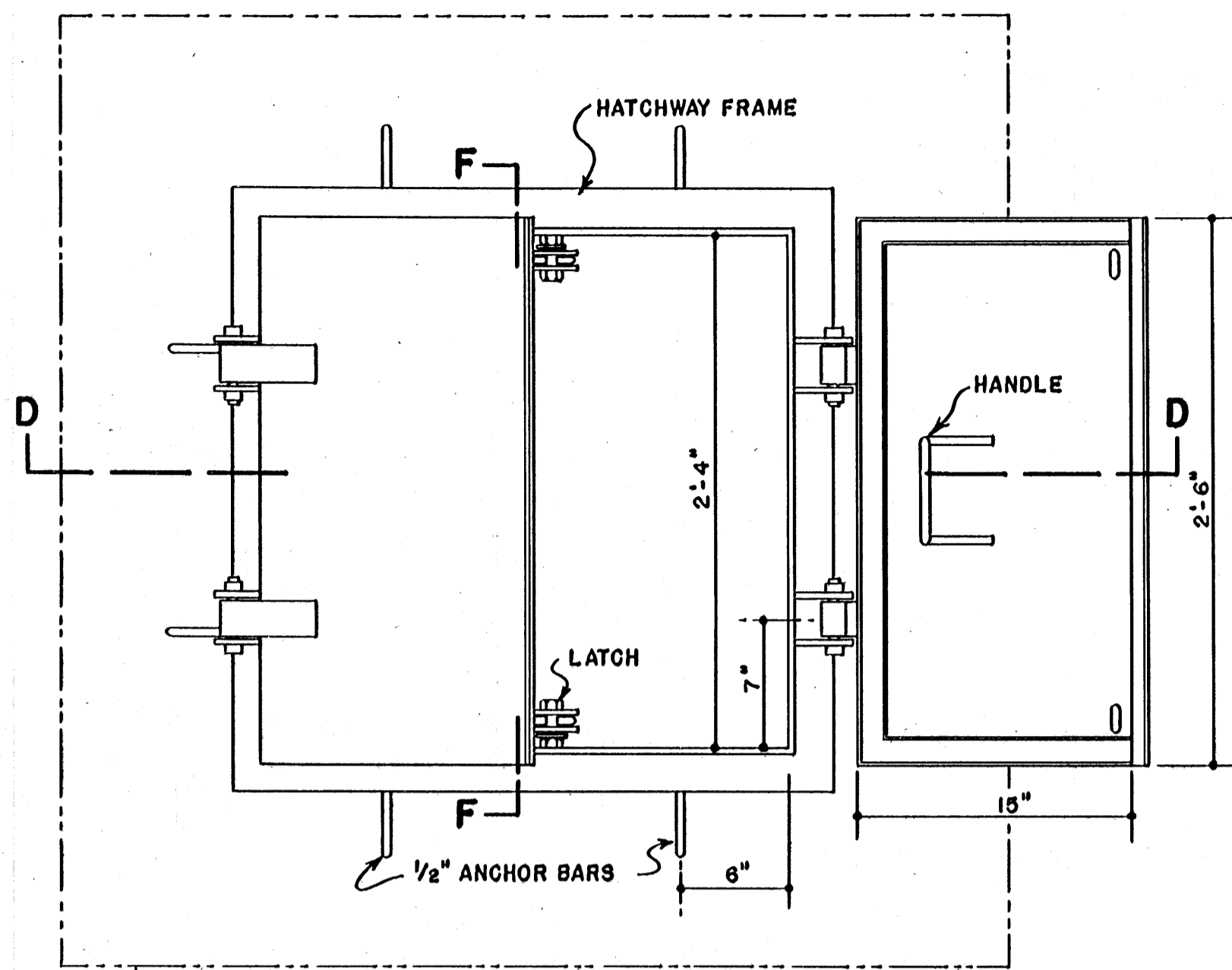
IT IS SUGGESTED THAT THE INTERIOR WALLS AND CEILING BE FINISHED WITH TWO COATS OF LIGHT COLORED CEMENT PAINT, AND THAT THE FLOOR IN THE SHELTER AREA BE FINISHED WITH LIGHT COLORED ASPHALT TILE OR LATEX BASE PAINT.

SCALE: 3/8" = 1'-0" EXCEPT AS NOTED

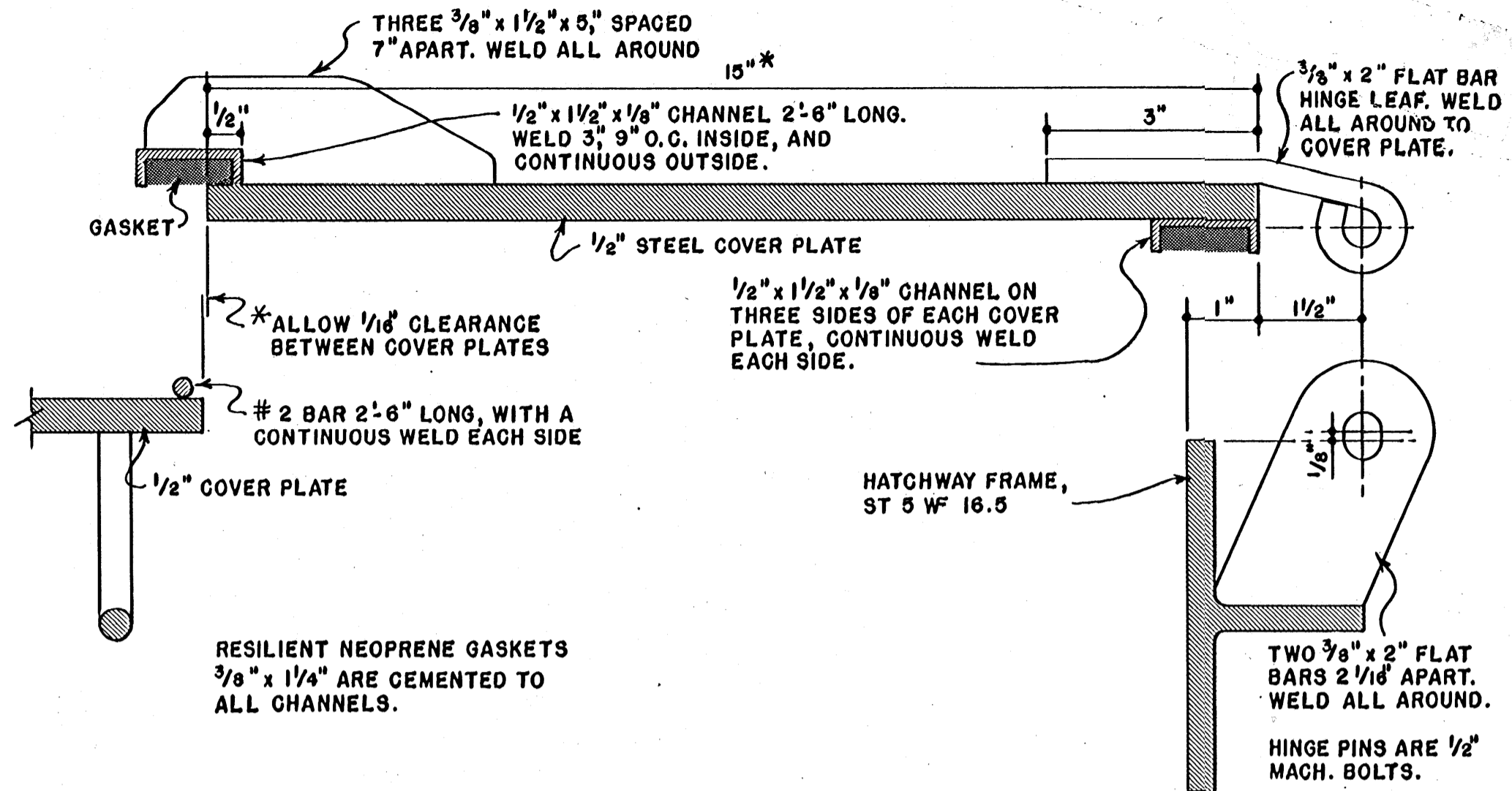
COOPERATIVE EXTENSION WORK IN
AGRICULTURE AND HOME ECONOMICS
STATE OF MISSISSIPPI
MISSISSIPPI STATE UNIVERSITY
AND
UNITED STATES DEPARTMENT OF AGRICULTURE COOPERATING

BLAST AND FALLOUT SHELTER
FOR SIX PEOPLE

USDA '63 EX. 5957 SHEET 2 OF 4

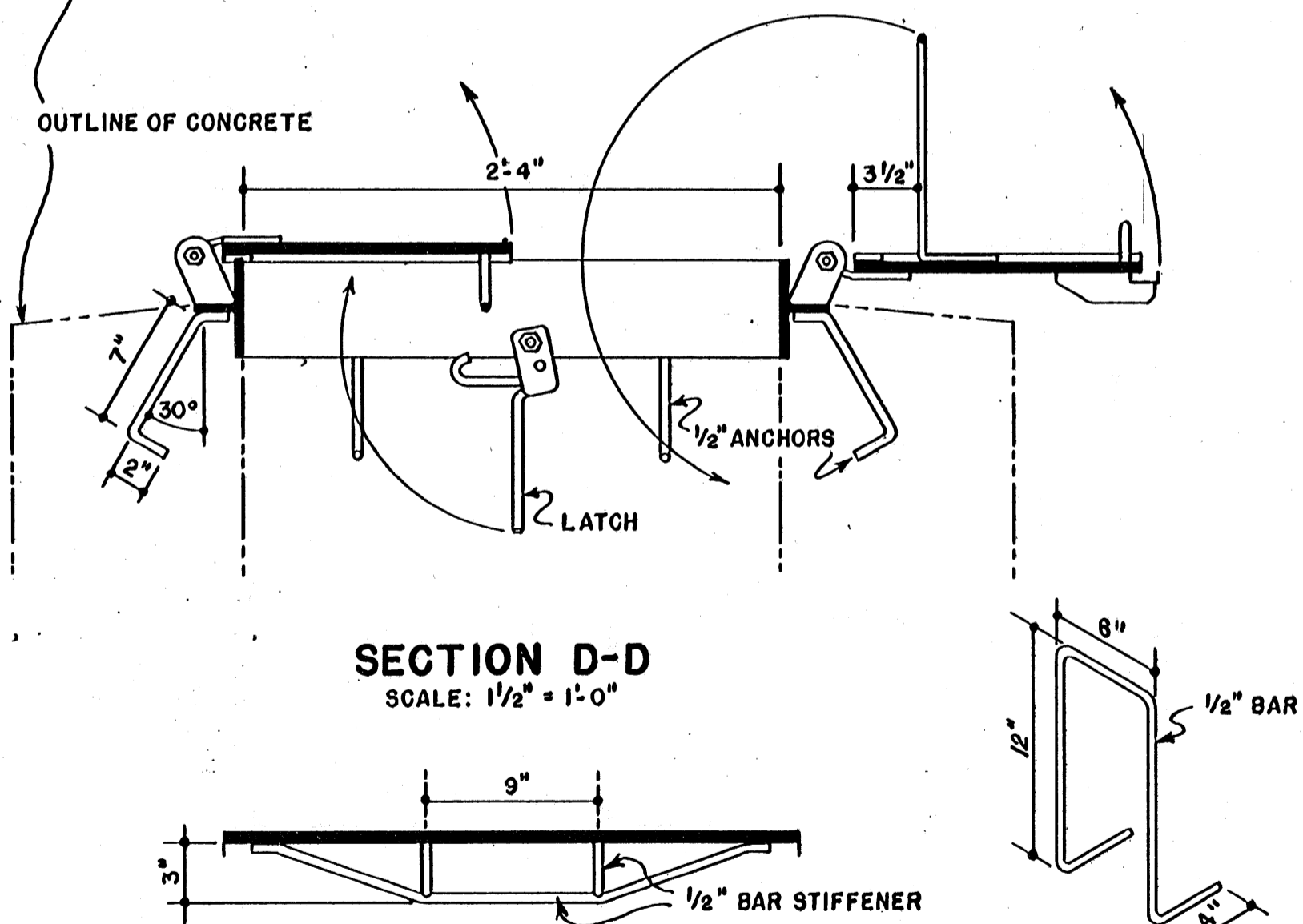


PLAN
(WITH ONE COVER OPEN)



COVER AND HINGE DETAILS

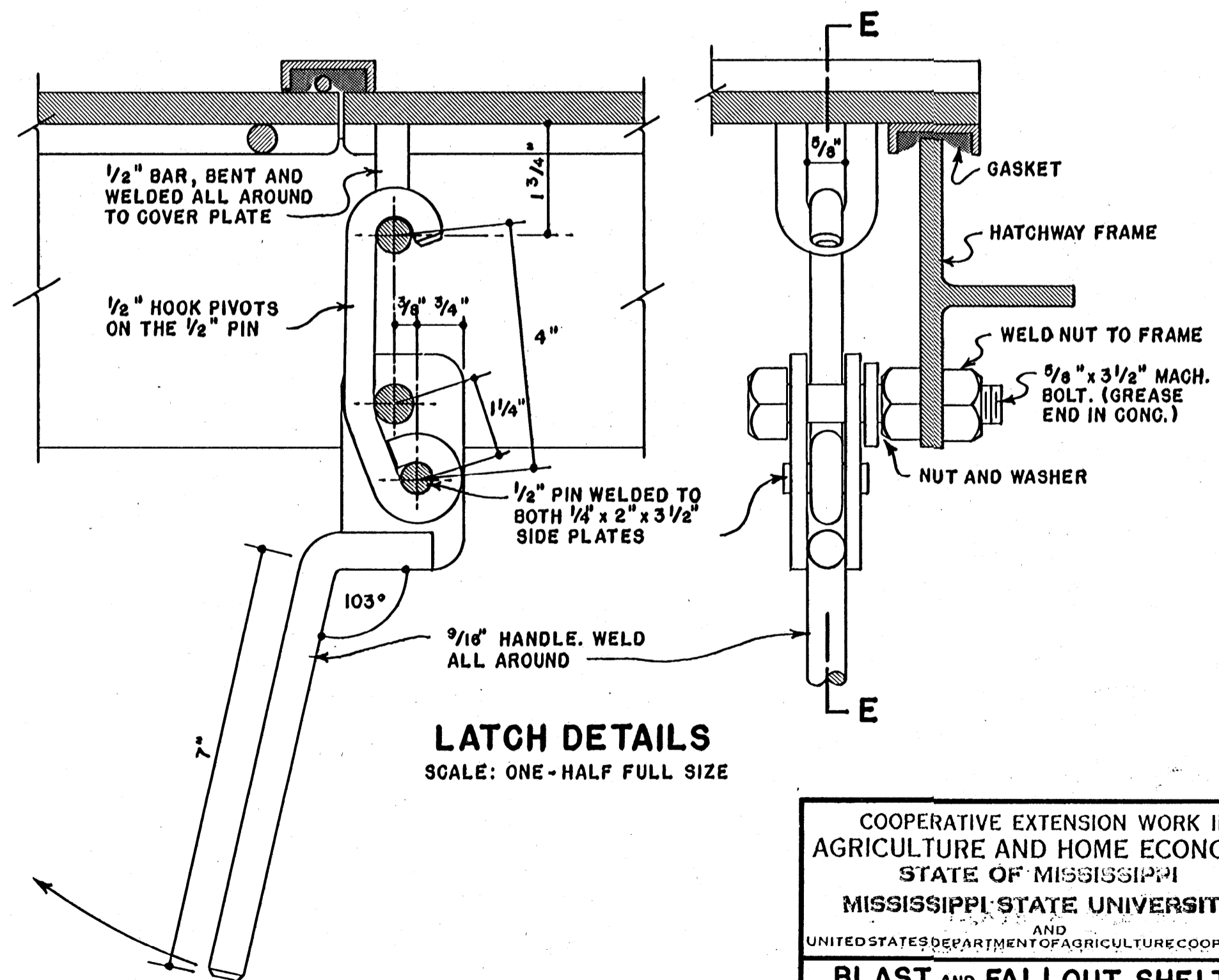
SCALE: ONE - HALF FULL SIZE



SECTION D-D
SCALE: 1/2" = 1'-0"

SECTION F-F
HATCHWAY FRAME NOT SHOWN

VIEW OF HANDLE



LATCH DETAILS

SCALE: ONE - HALF FULL SIZE

SECTION E-E

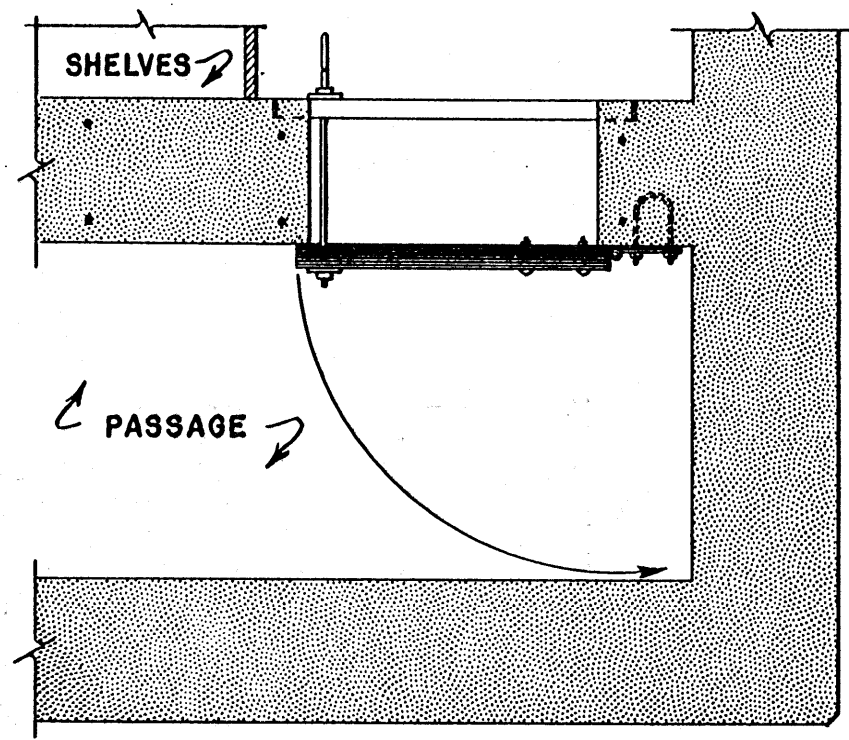
ALL STEEL PARTS SHALL BE HOT-DIP GALVANIZED AFTER FABRICATION.

STOCK STEEL ITEMS ARE ALSO GALVANIZED.

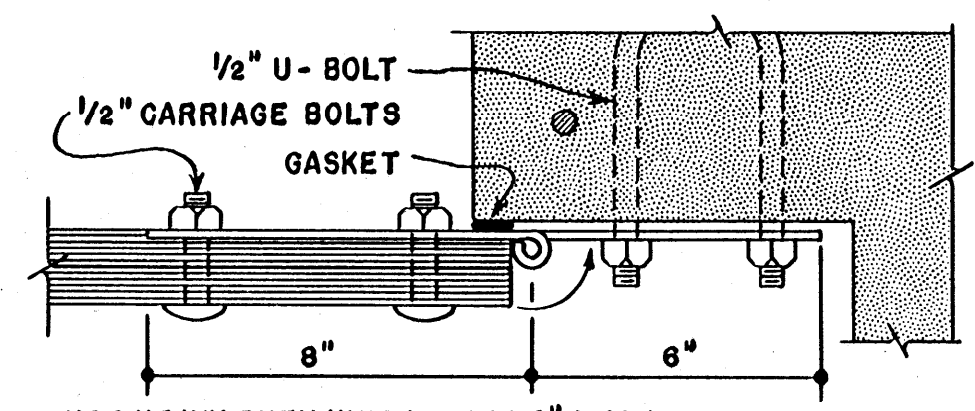
COOPERATIVE EXTENSION WORK IN
AGRICULTURE AND HOME ECONOMICS
STATE OF MISSISSIPPI
MISSISSIPPI STATE UNIVERSITY
AND
UNITED STATES DEPARTMENT OF AGRICULTURE COOPERATING

BLAST AND FALLOUT SHELTER
FOR SIX PEOPLE

USDA '63 EX. 5957 SHEET 3 OF 4

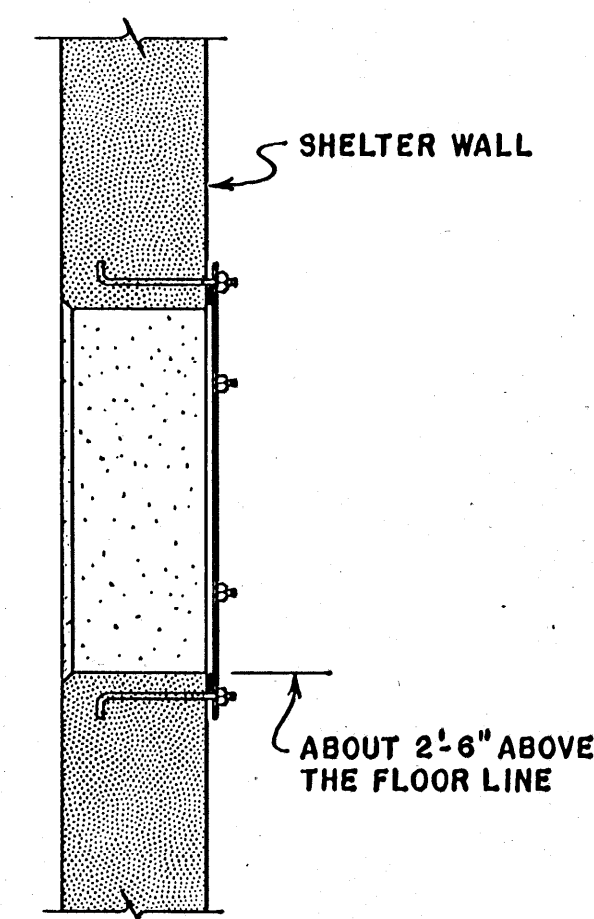


PLAN

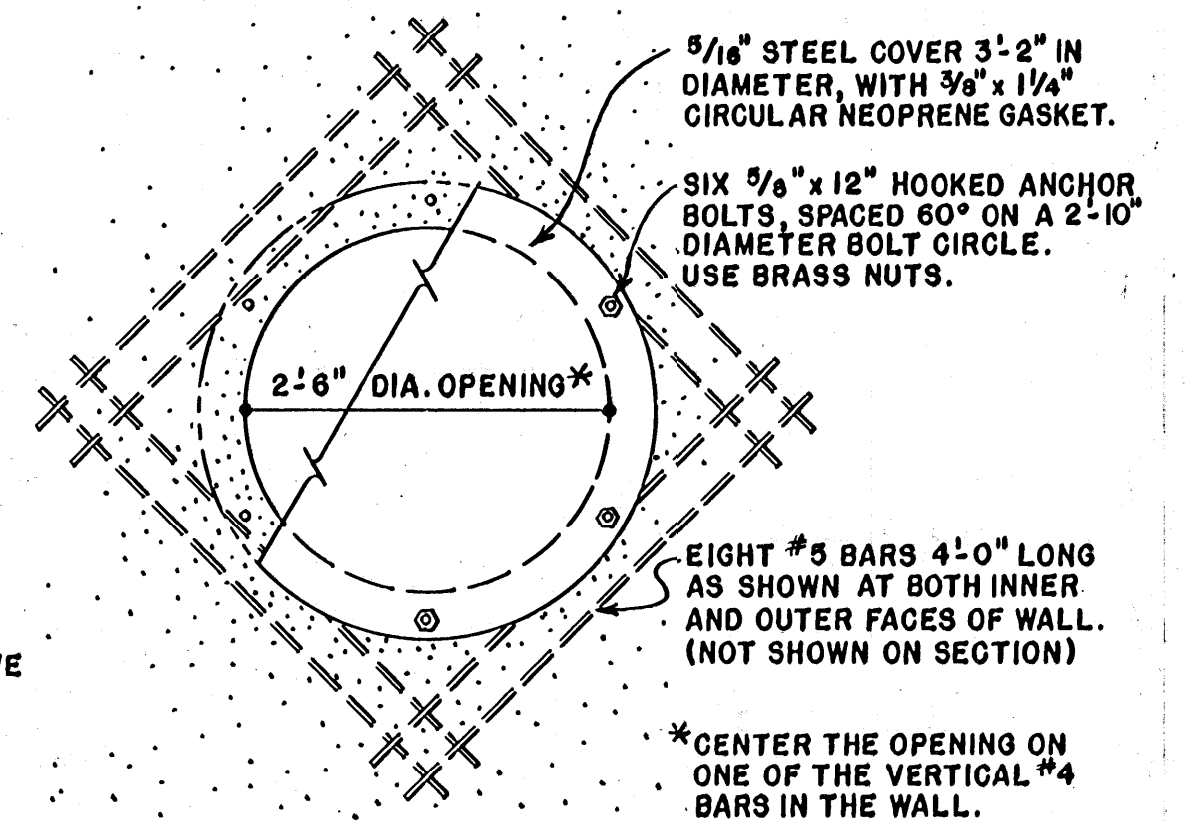


USE HEAVY DUTY HINGES WITH 8" LEAF FLUSH WITH INNER FACE OF DOOR. SHIM 6" LEAF TO THE COMPRESSED THICKNESS OF GASKET (ABOUT 3/16").

DETAIL AT HINGE
SCALE: 3"=1'-0"

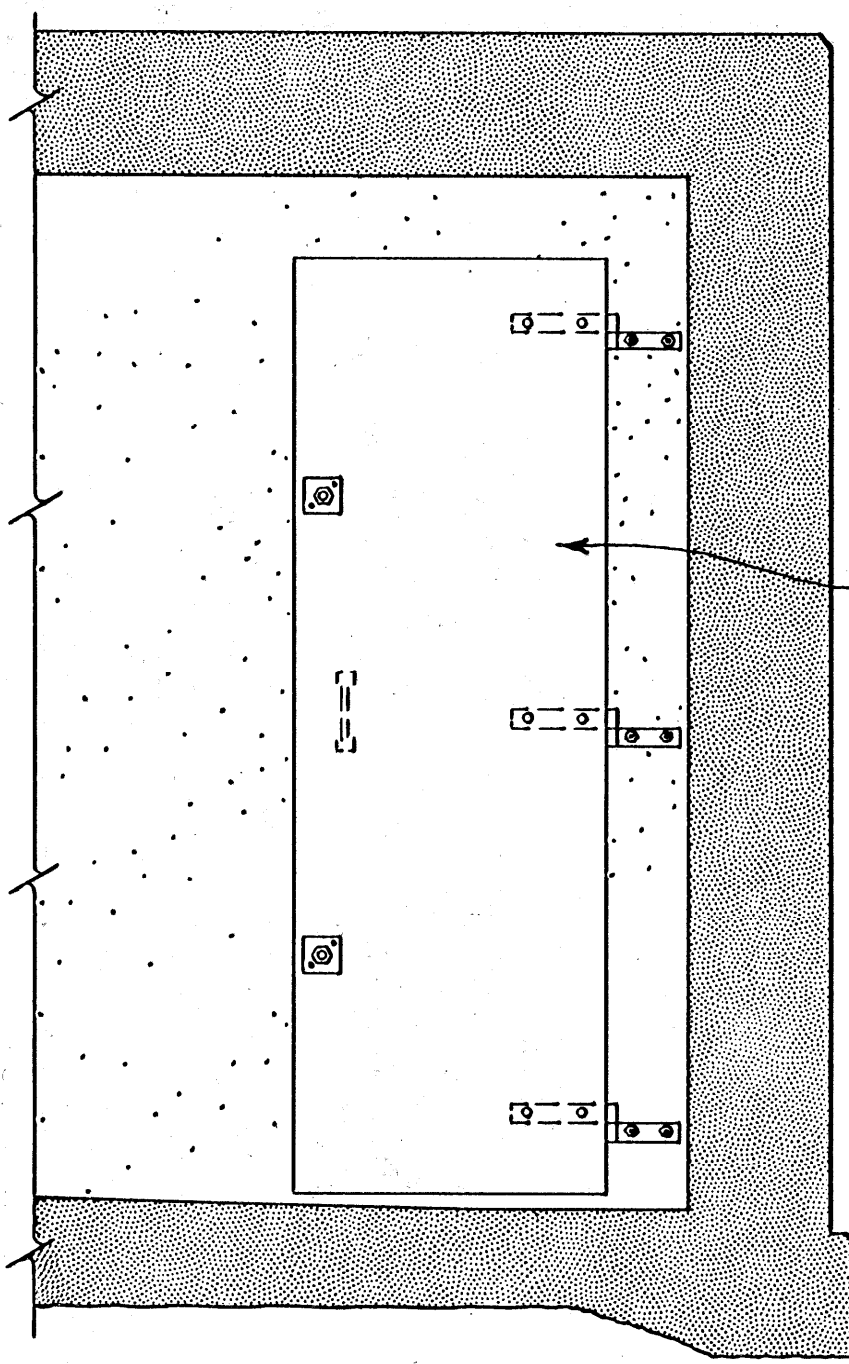


SECTION
REINFORCING BARS NOT SHOWN

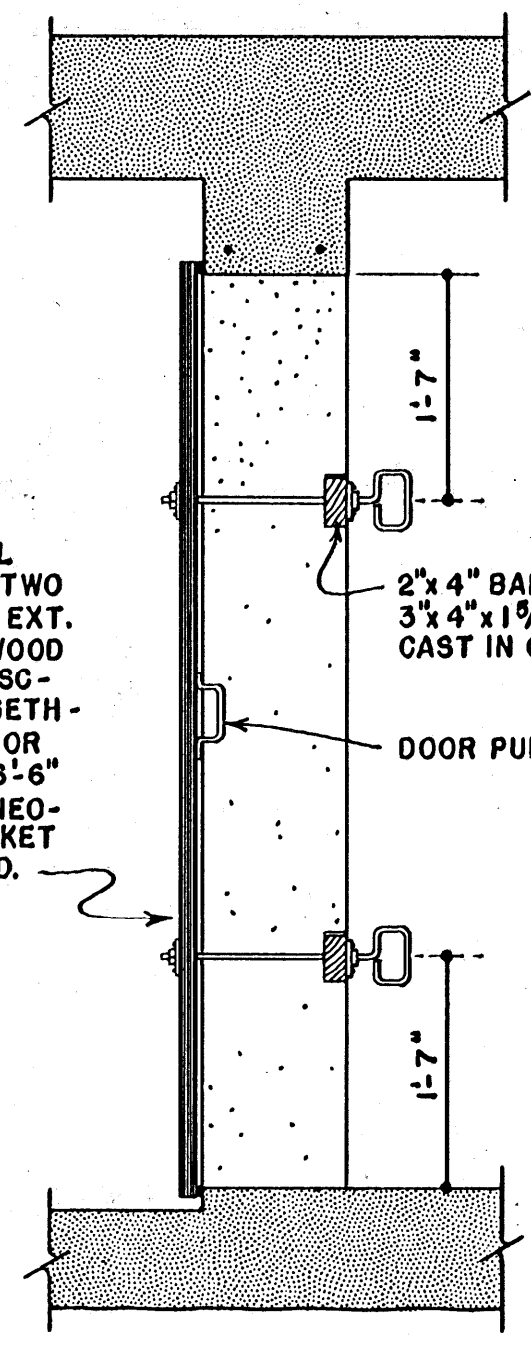


ELEVATION
FROM INSIDE

OPTIONAL EMERGENCY EXIT

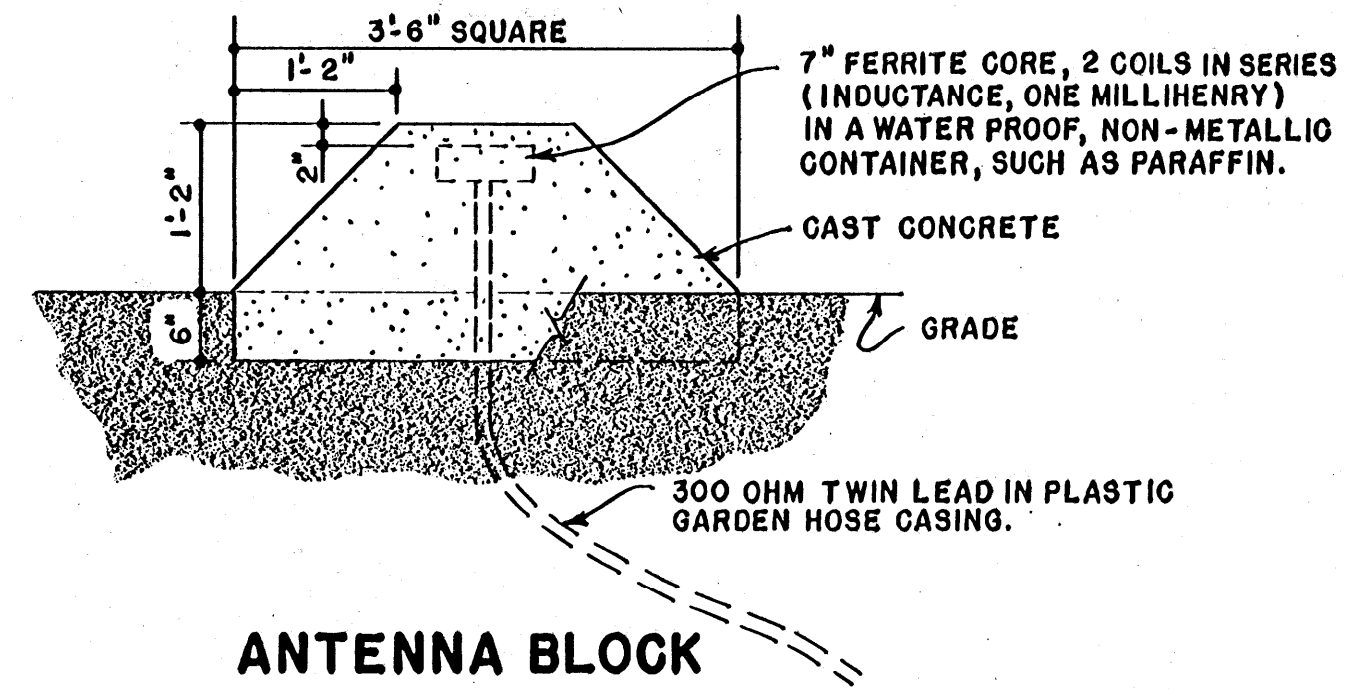


ELEVATION

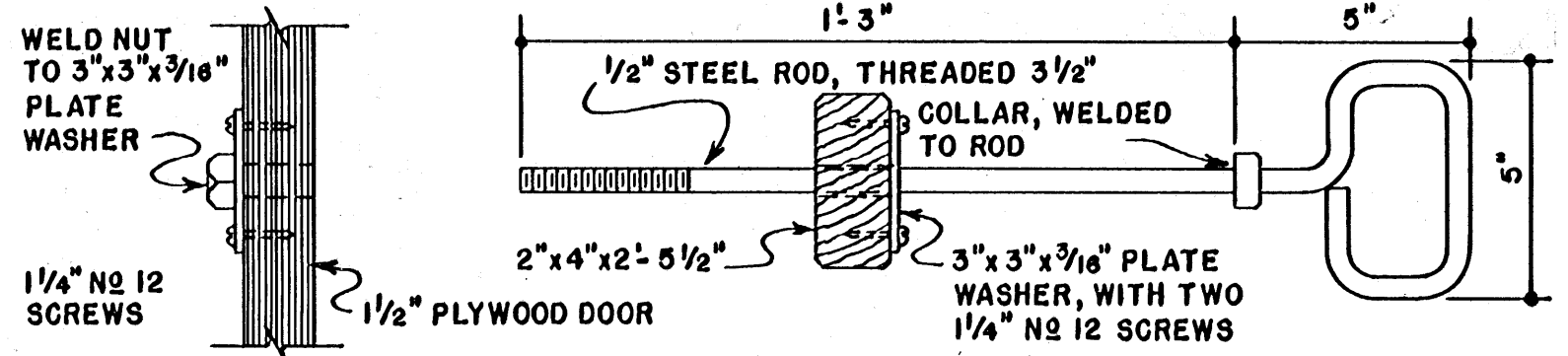


SECTION

1/2" METAL CLAD DOOR, TWO LAYERS 3/4" EXT. GRADE PLYWOOD GLUED AND SCREWED TOGETHER. THE DOOR IS 2'-1/2" x 6'-6" WITH 3/8" NEOPRENE GASKET ALL AROUND.

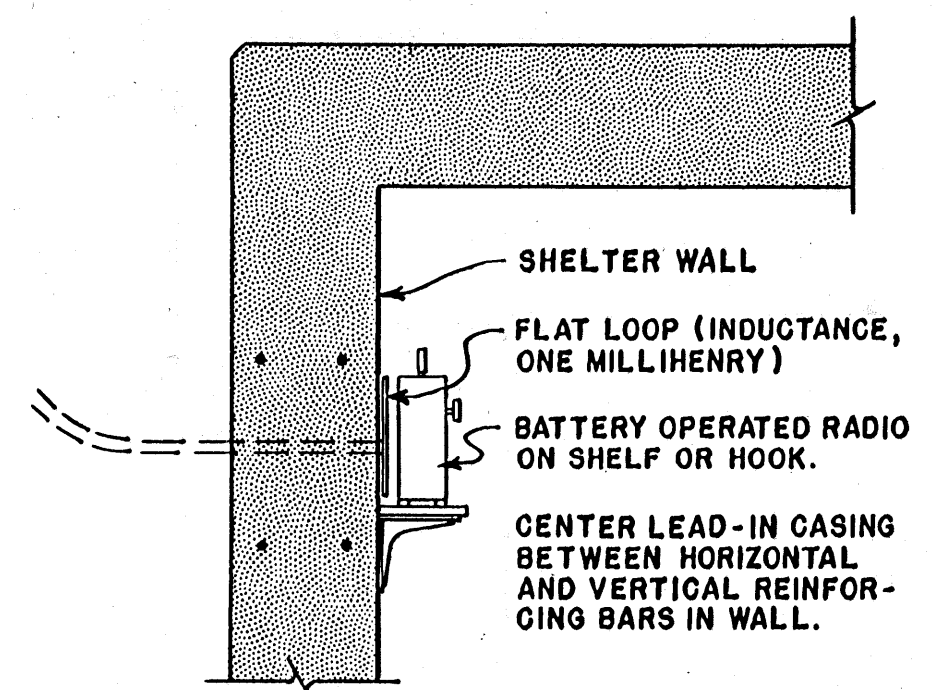


ANTENNA BLOCK



LOCKING DETAILS
SCALE: 3"=1'-0"

INNER DOOR



SECTION

ANTENNA SYSTEM

SCALE: 3/4" = 1'-0" EXCEPT AS NOTED.

COOPERATIVE EXTENSION WORK IN AGRICULTURE AND HOME ECONOMICS
STATE OF MISSISSIPPI
MISSISSIPPI STATE UNIVERSITY
AND
UNITED STATES DEPARTMENT OF AGRICULTURE COOPERATING

BLAST AND FALLOUT SHELTER
FOR SIX PEOPLE

USDA '63 EX. 5957 SHEET 4 OF 4