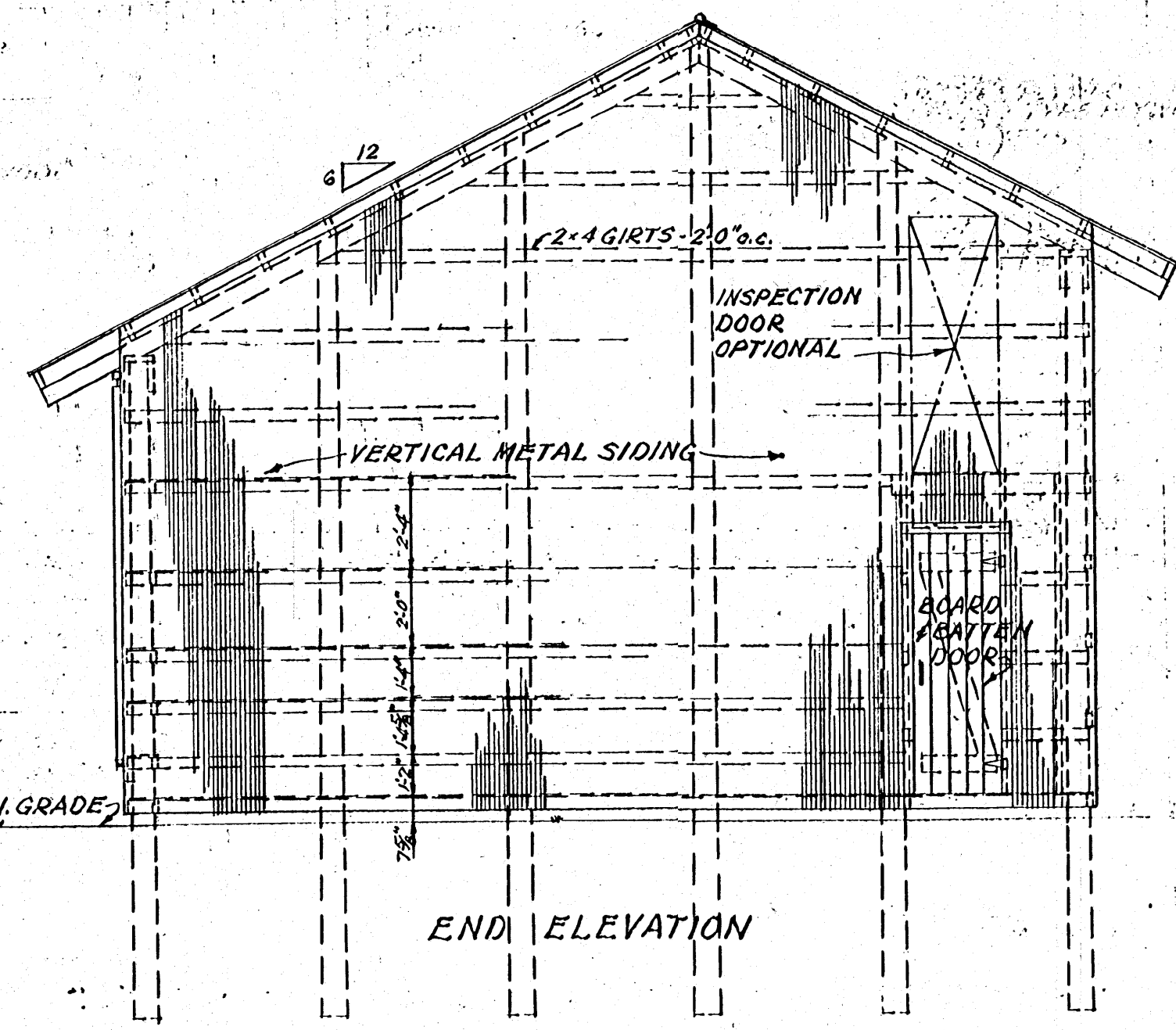
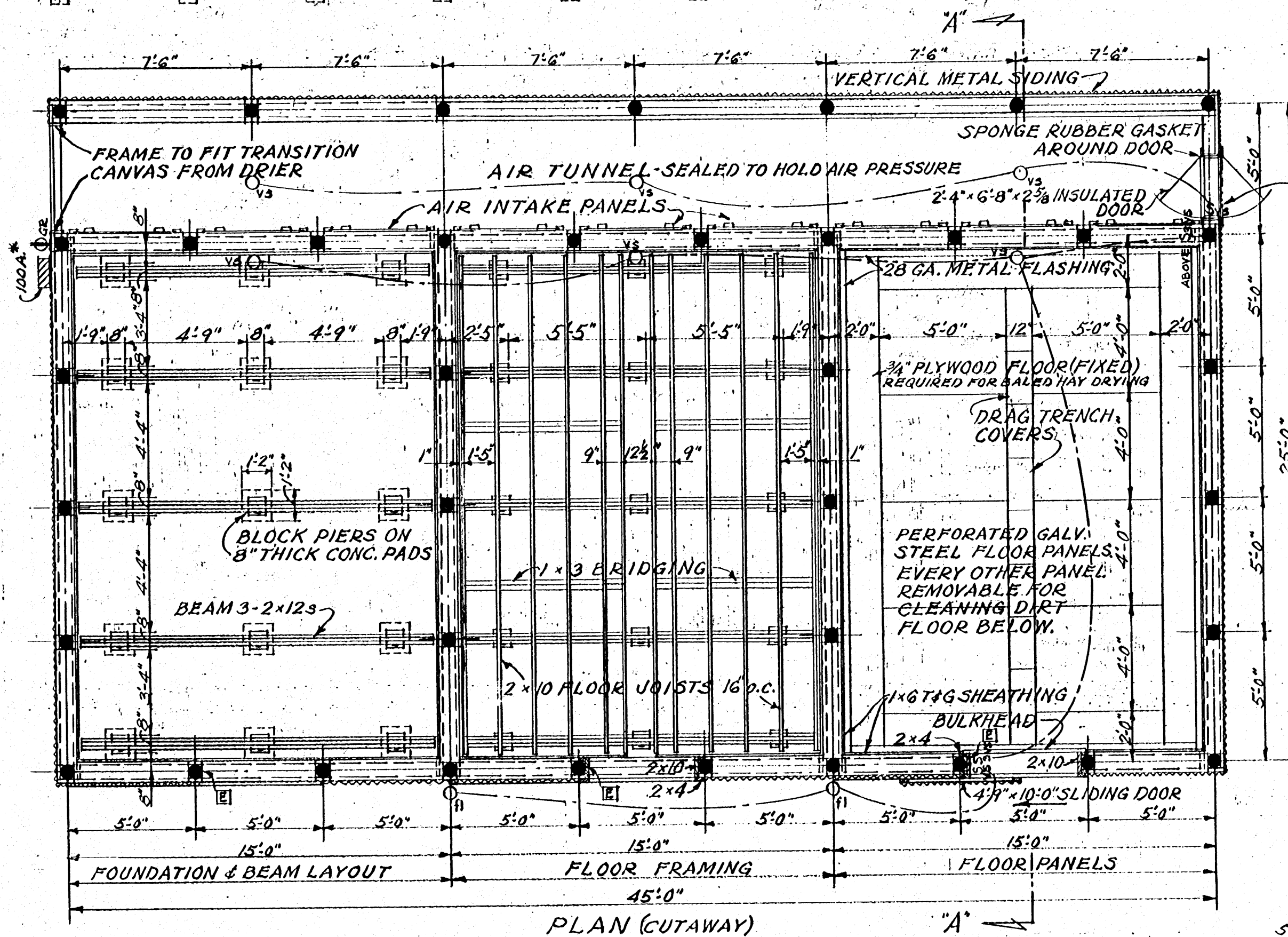


FRONT ELEVATION



END ELEVATION



PLAN (CUTAWAY)

- GENERAL NOTES:**
- DESIGN LOADS
LIVE ROOF LOAD - 20 LB. PER SQ. FT.
BINS - 6' DEPTH OF WHEAT
WIND - 78 MILES PER HOUR
 - RECOMMENDED BATCH CAPACITY FOR DRYING
GRAIN - 3' DEPTH - 640 BU. PER BIN
BALED HAY - 5' BALES DEEP - 135 BALES PER BIN
PEANUTS - 6' DEPTH - 11 T. PER BIN (VA. TYPE)
12.5 T. PER BIN (RUNNERS)
 - AT GRAIN DEPTHS BELOW 3' THE EDGES OF THE GRAIN PILE SHOULD HAVE SHALLOWER DEPTH FOR UNIFORMITY OF DRYING AT THE EDGES. PACK BALED HAY TIGHTLY. PUT CUT SIDE OF BALE DOWN.
 - MINIMUM RECOMMENDED FAN - 7.5 H.P. (FOR 3 BINS)
HEAT REQUIREMENT - ADJUSTABLE BETWEEN 250,000 AND 1,200,000 B.T.U. PER HOUR.
 - STORAGE CAPACITY
GRAIN - 6' DEPTH - 1280 BU. PER BIN
BALED HAY TO ROOF - 16 T. PER BIN
PEANUTS (MIXING BETWEEN BINS) 24 T. PER BIN
 - AIR TUNNEL DESIGNED FOR 32,000 C.F.M. THIS DELIVERY WOULD SERVE 6 BINS MAXIMUM TO CARE FOR FUTURE EXPANSION.
 - IF DESIRED A MAN DOOR MAY BE INSTALLED OVER THE AIR TUNNEL DOOR TO PERMIT INSPECTION FROM THE TOP OF THE AIR TUNNEL.
 - PIER FOOTINGS MUST BE DEEP ENOUGH TO BEAR ON SOLID GROUND.
 - EQUIP BUILDING WITH AN ADEQUATE LIGHTNING PROTECTION SYSTEM IN AREAS WHERE NEEDED.

CIRCUIT BREAKERS

100 AMP	
50 A.	20 A.
20 A.	SPARE
LIGHT	FLOOD
CONV.	SPARE

POWER PANEL

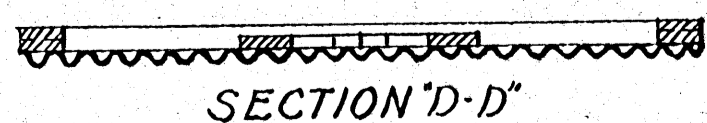
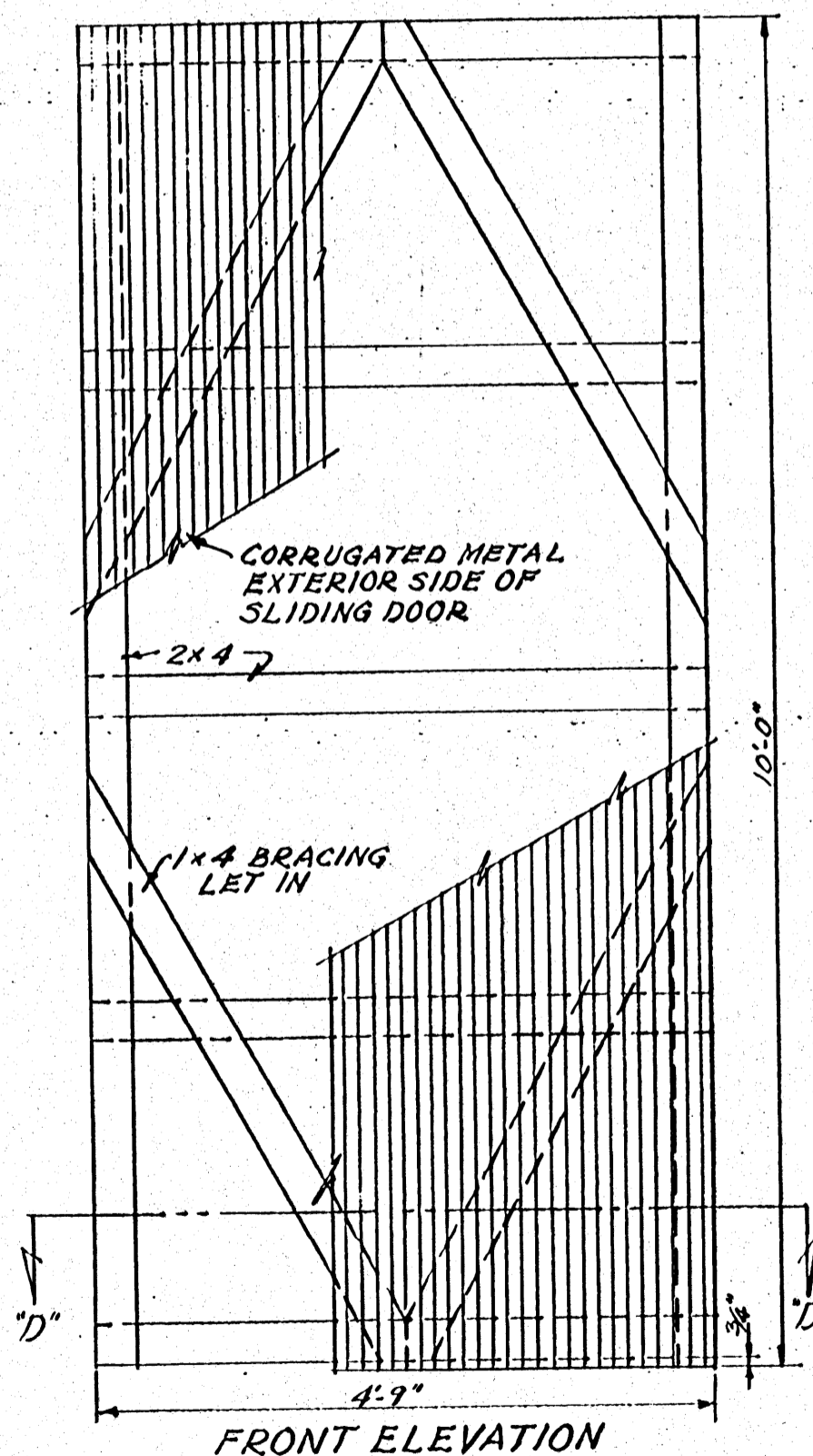
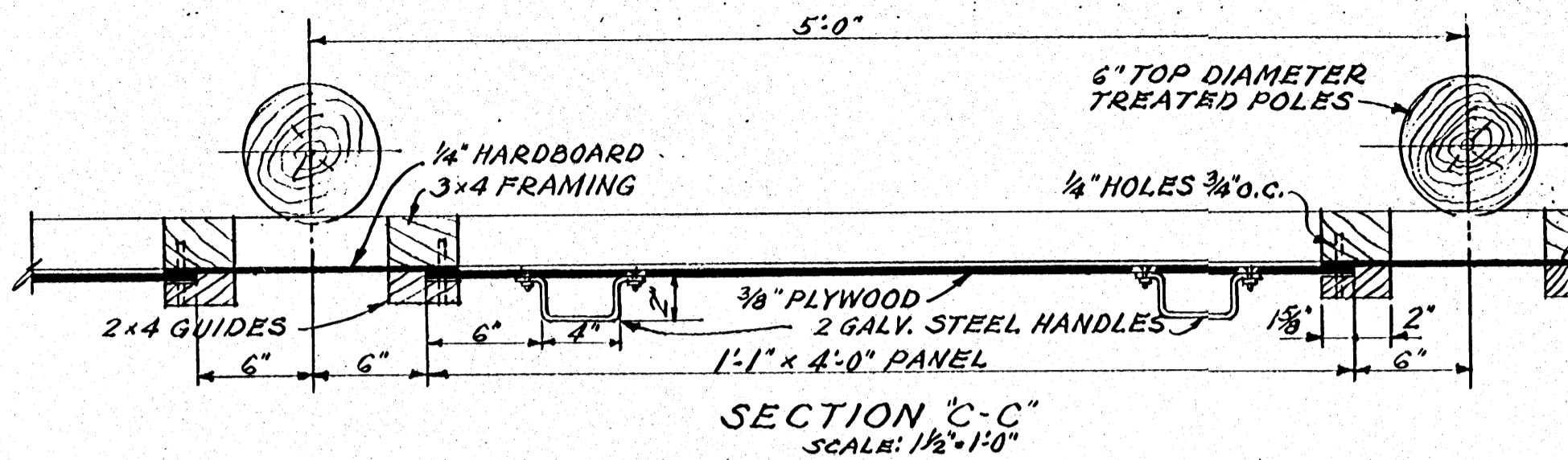
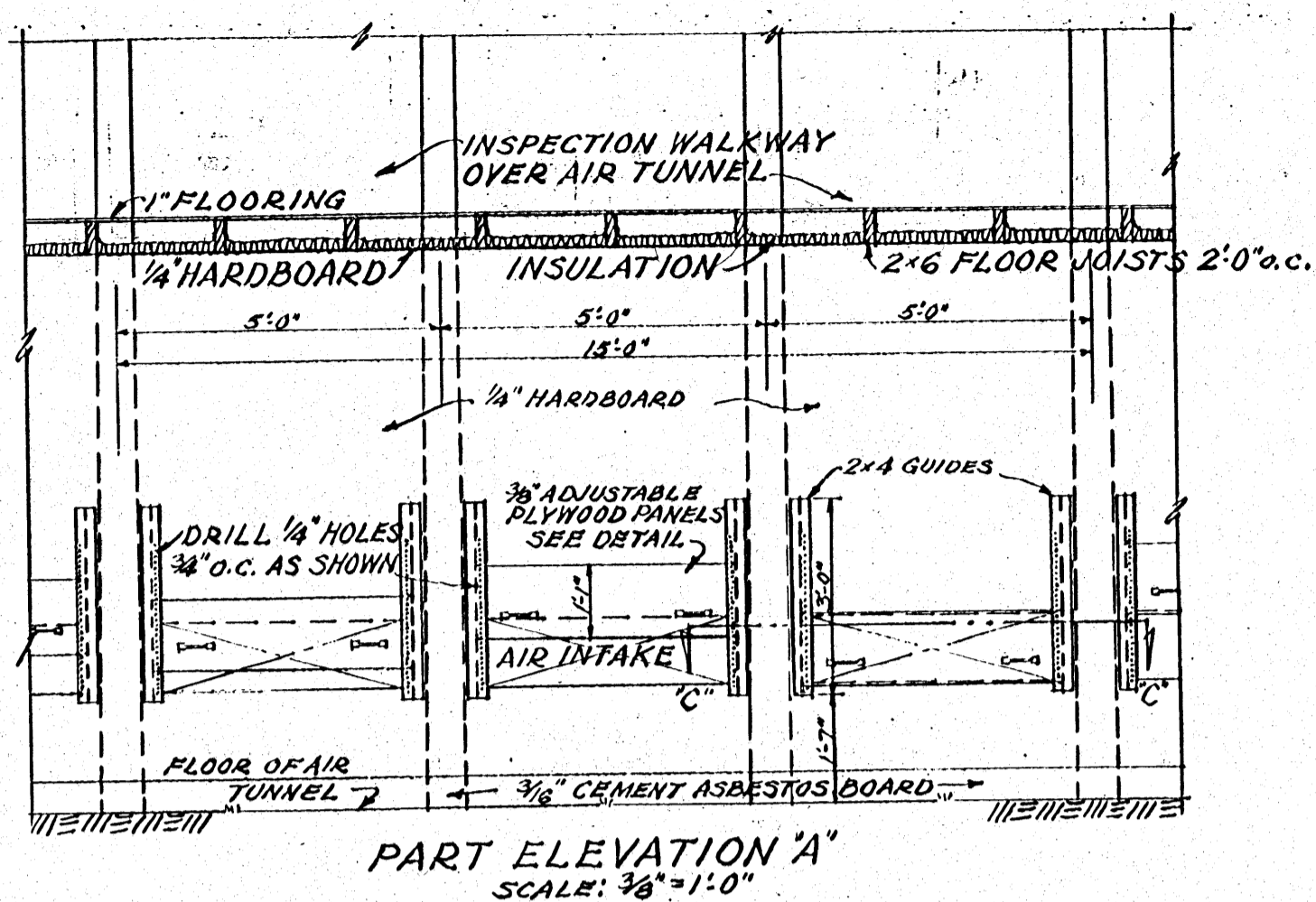
- ELECTRICAL SYMBOLS**
- Svs - VAPOR SEALED SINGLE SWITCH
 - S3vs - VAPOR SEALED 3WAY SWITCH
 - vs - VAPOR SEALED LAMP HOLDER
 - fl - PAR 38 FLOODS
 - ⊕GR - CONVENIENCE OUTLET GROUNDED
 - ⊕ - OUTLETS FROM 3 CIRCUITS:
 - 110V CONVENIENCE GROUNDED
 - 220V TWIST LOCK FOR 3/4 HP
 - 220V TWIST LOCK FOR 3 HP
 - * - CONSIDER EXPANSION REQUIREMENTS MAY NEED 200A.

SCALE: 1/4"=1'-0" UNLESS OTHERWISE NOTED.

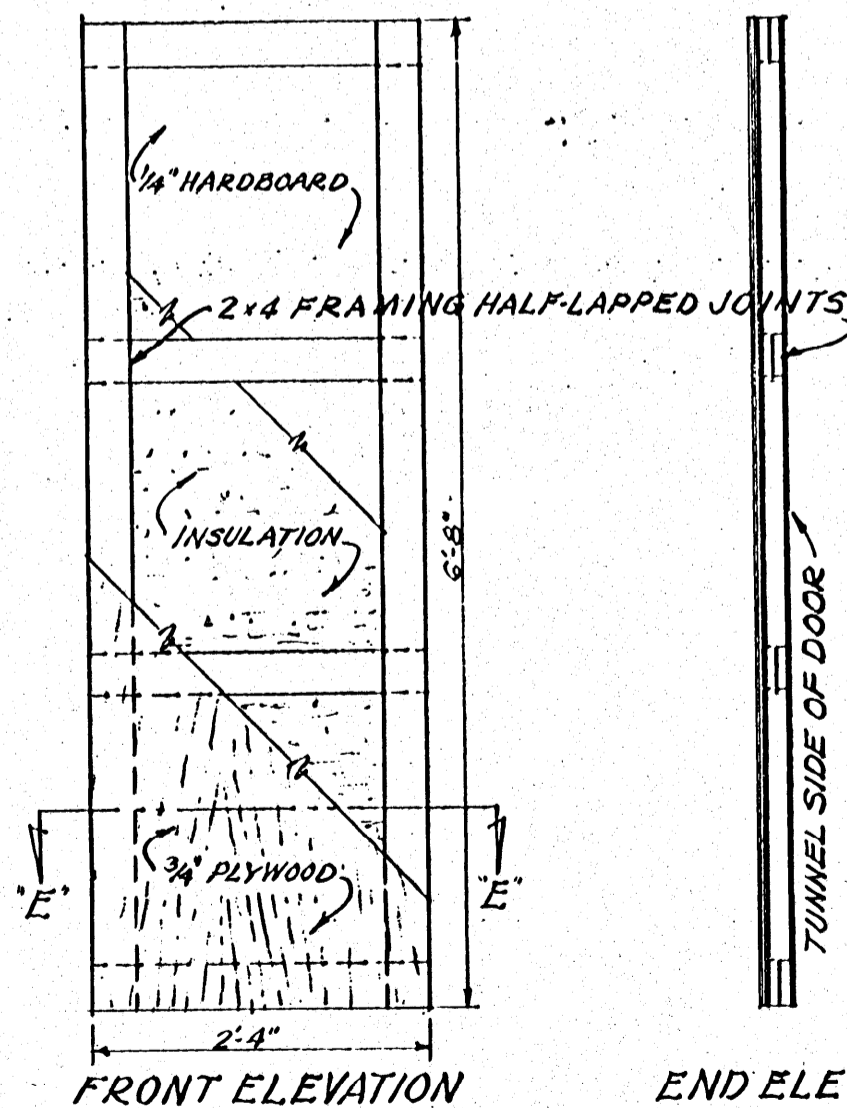
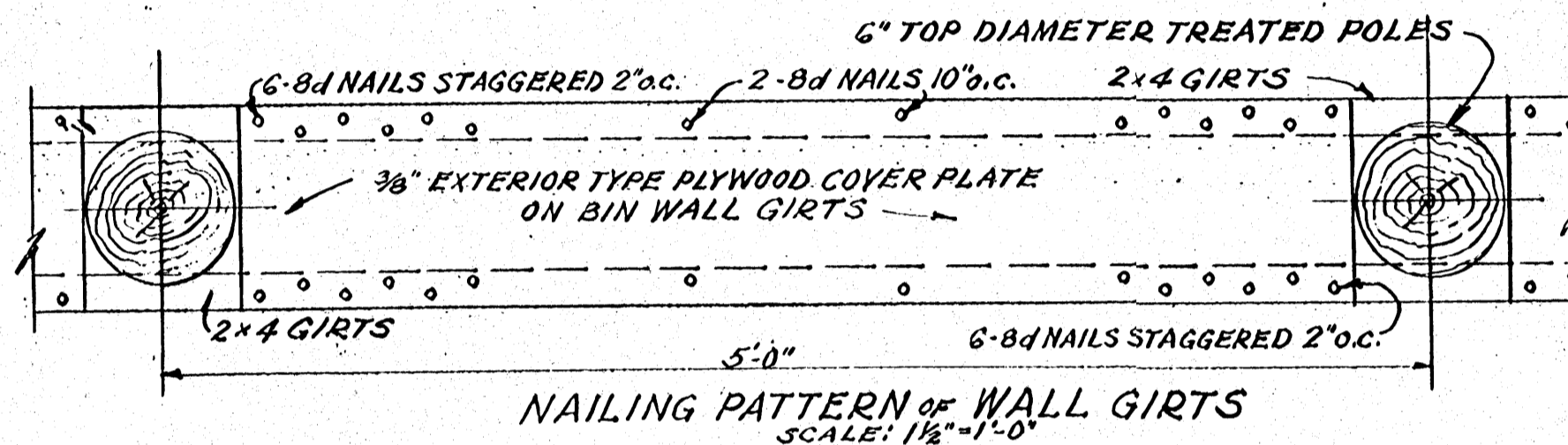
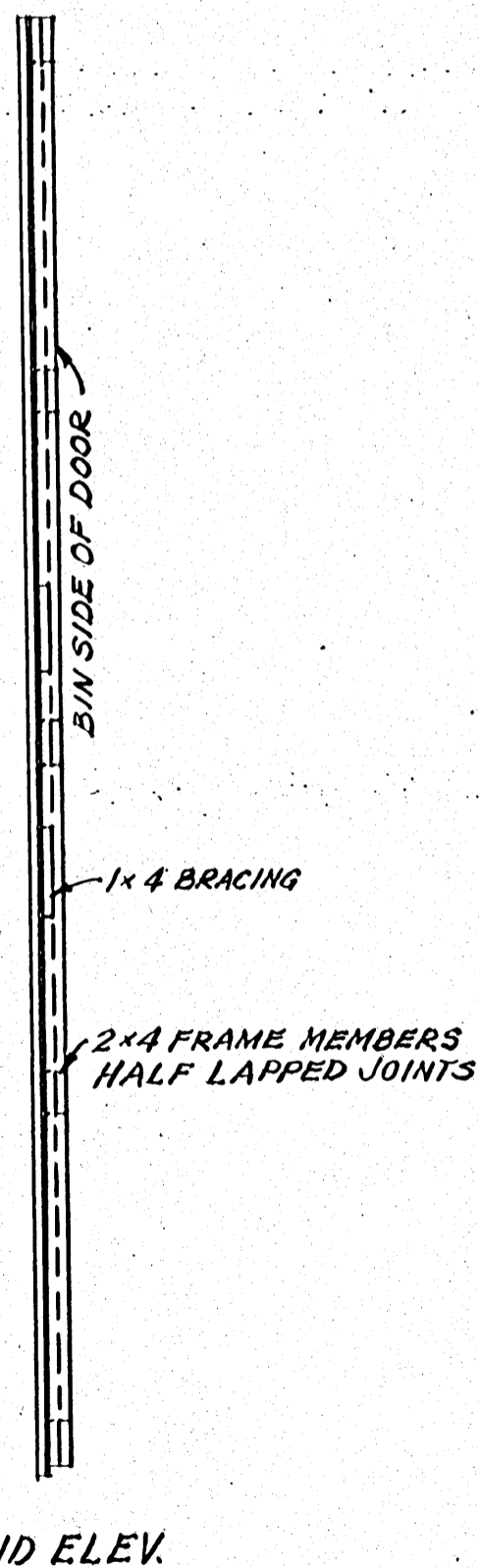
COOPERATIVE EXTENSION WORK IN AGRICULTURE AND HOME ECONOMICS
STATE OF MISSISSIPPI
MISSISSIPPI STATE UNIVERSITY
AND
UNITED STATES DEPARTMENT OF AGRICULTURE COOPERATING

DRYING AND STORAGE SHED

USDA '59	EX. 5869	SHEET 1 OF 3
----------	----------	--------------



DETAILS OF BIN DOOR SCALE: 3/4" = 1'-0"



SECTION 'E-E'

DETAILS OF TUNNEL DOOR SCALE: 3/4" = 1'-0"

- OPERATIONAL NOTES:**
1. DRAG CONVEYOR 20' LONG TO BE MOVED FROM BIN TO BIN. FOR SMALL GRAINS, WIPERS TO KEEP GRAIN FROM GETTING UNDER EDGE OF BELT ARE ESSENTIAL. 6" BELTS HANDLE ABOUT 1000 BU. PER HOUR.
 2. SLIDE DOORS IN TUNNEL MAY BE USED AS THROTTLE VALVES TO CONTROL FLOW TO BINS. FOR UNEQUAL DEPTHS IN BINS:
- | BIN 1 | | BIN 2 | |
|-------|-----------|----------|-----------|
| DEPTH | GATE OPEN | DEPTH | GATE OPEN |
| FULL | 12" | 1/8 FULL | 9" |
| FULL | 12" | 3/4 FULL | 6 3/4" |
| FULL | 12" | 5/8 FULL | 4 3/4" |
| FULL | 12" | 1/2 FULL | 3 1/4" |
| FULL | 12" | 3/8 FULL | 1 3/4" |
| FULL | 12" | 1/4 FULL | 3/4" |
- WHEN ONE BIN IS DRIER THAN ANOTHER, THROTTLE AIR TO REDUCE DELIVERY TO DRY BIN. LOW AIR FLOWS ARE MORE ECONOMICAL WHEN PRODUCT IS NEARLY DRY.
3. WHEN REMOVING DRAG TRENCH COVERS, PULL THEM SLOWLY TO AVOID JAMMING AND OVERFLOWING DRAG BELT.
 4. CAUTION: BE SURE NO ONE IS IN TUNNEL AND BOTH MAN DOORS ARE SECURE BEFORE STARTING FAN AND BURNER.