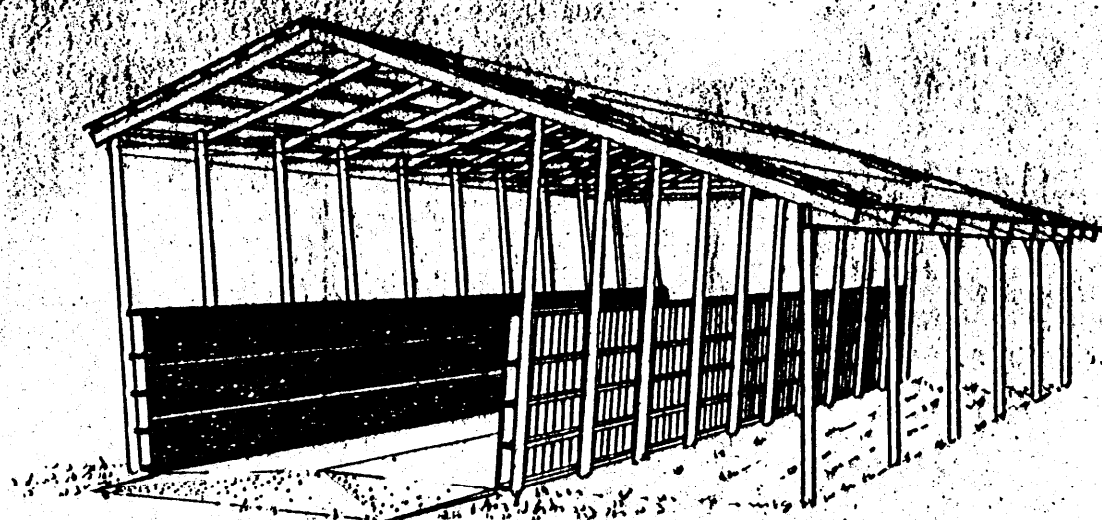
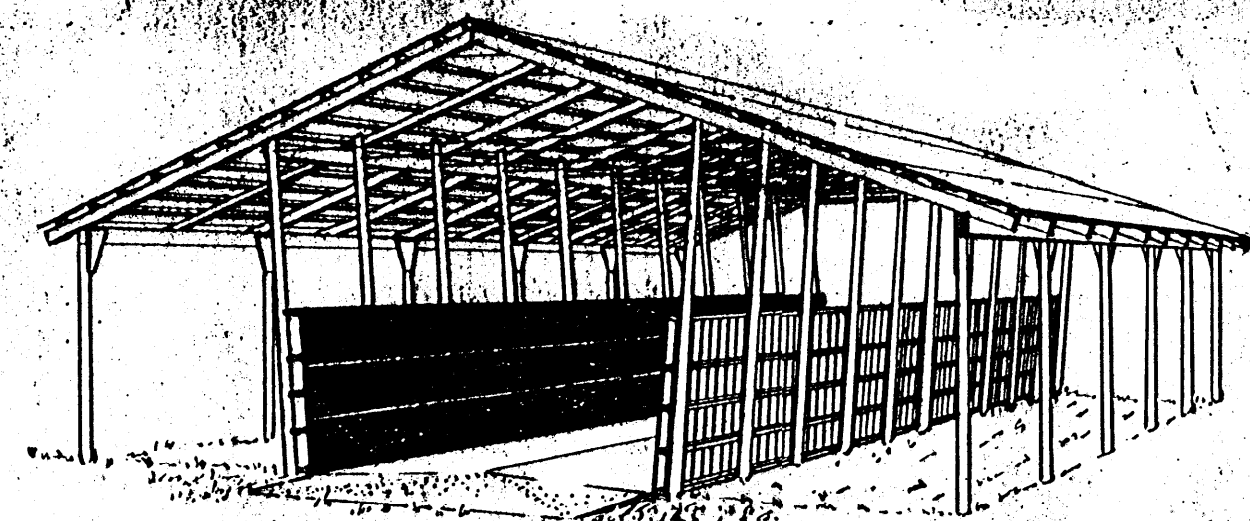


SILO



SILO WITH ONE SHED



SILO WITH TWO SHEDS

**GENERAL NOTES:**

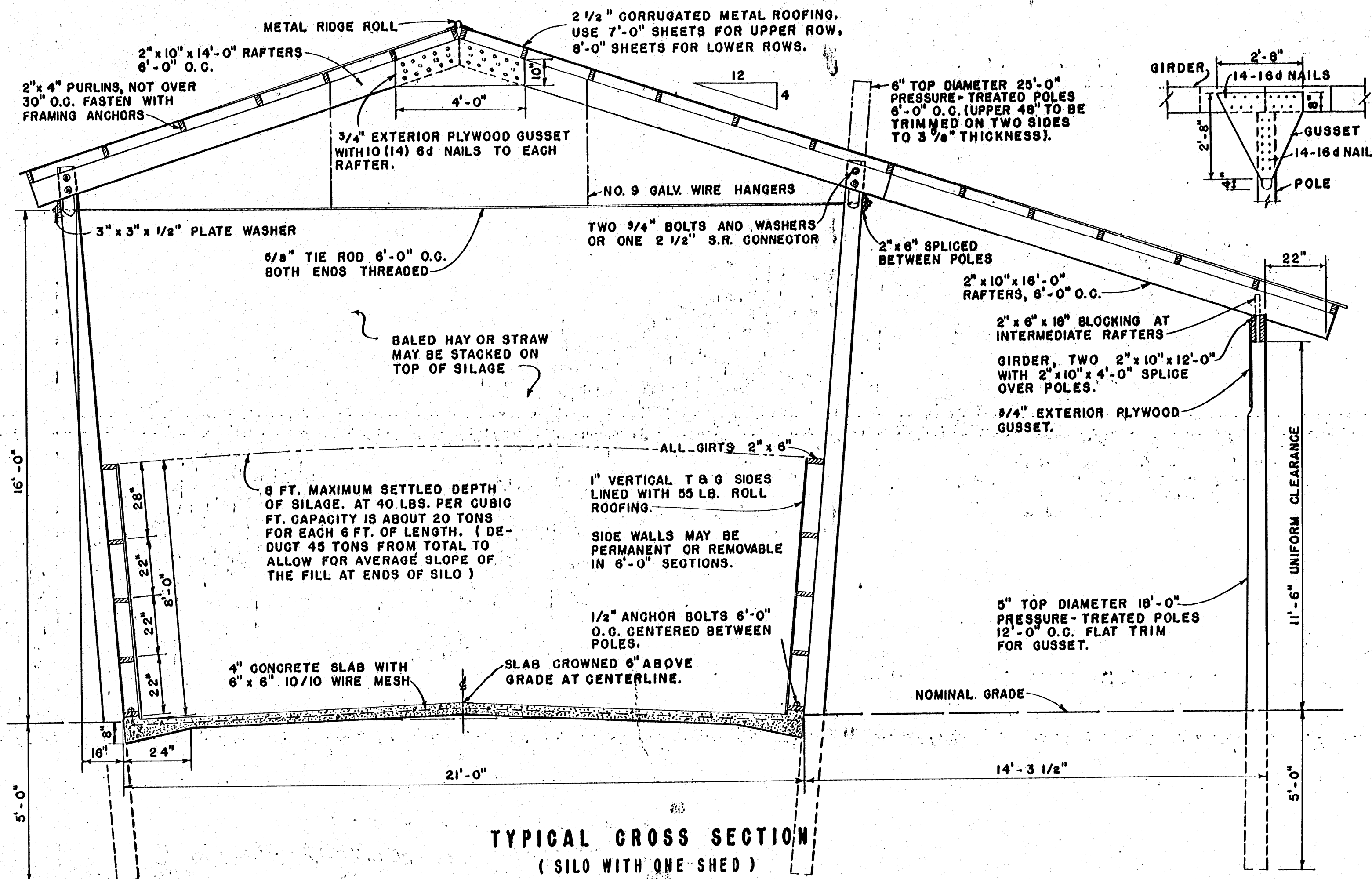
THE SILO MAY BE BUILT IN ANY LENGTH IN UNITS OF 6 FEET. IF SHEDS ARE DESIRED, USE 12 FT. UNITS. CAPACITY OF THE 60 FT. LENGTH SHOWN ON THE PLAN IS ABOUT 155 TONS.

THE ROOF STRUCTURE IS DESIGNED FOR AREAS WHERE SNOW LOADS DO NOT EXCEED 20 LBS. PER SQ. FT. IF SNOW LOADS UP TO 30 LBS. MAY BE EXPECTED, SUBSTITUTE 2" x 12" FOR THE 2" x 10" MEMBERS SHOWN AND NAIL THE RIDGE GUSSET TO EACH RAFTER WITH 14 NAILS.

ALL POLES, GIRTS AND T & G WALL SHEATHING SHOULD BE PRESERVATIVE-TREATED WITH PRESERVATIVE TO 8 LBS. PER CUBIC FOOT RETENTION.

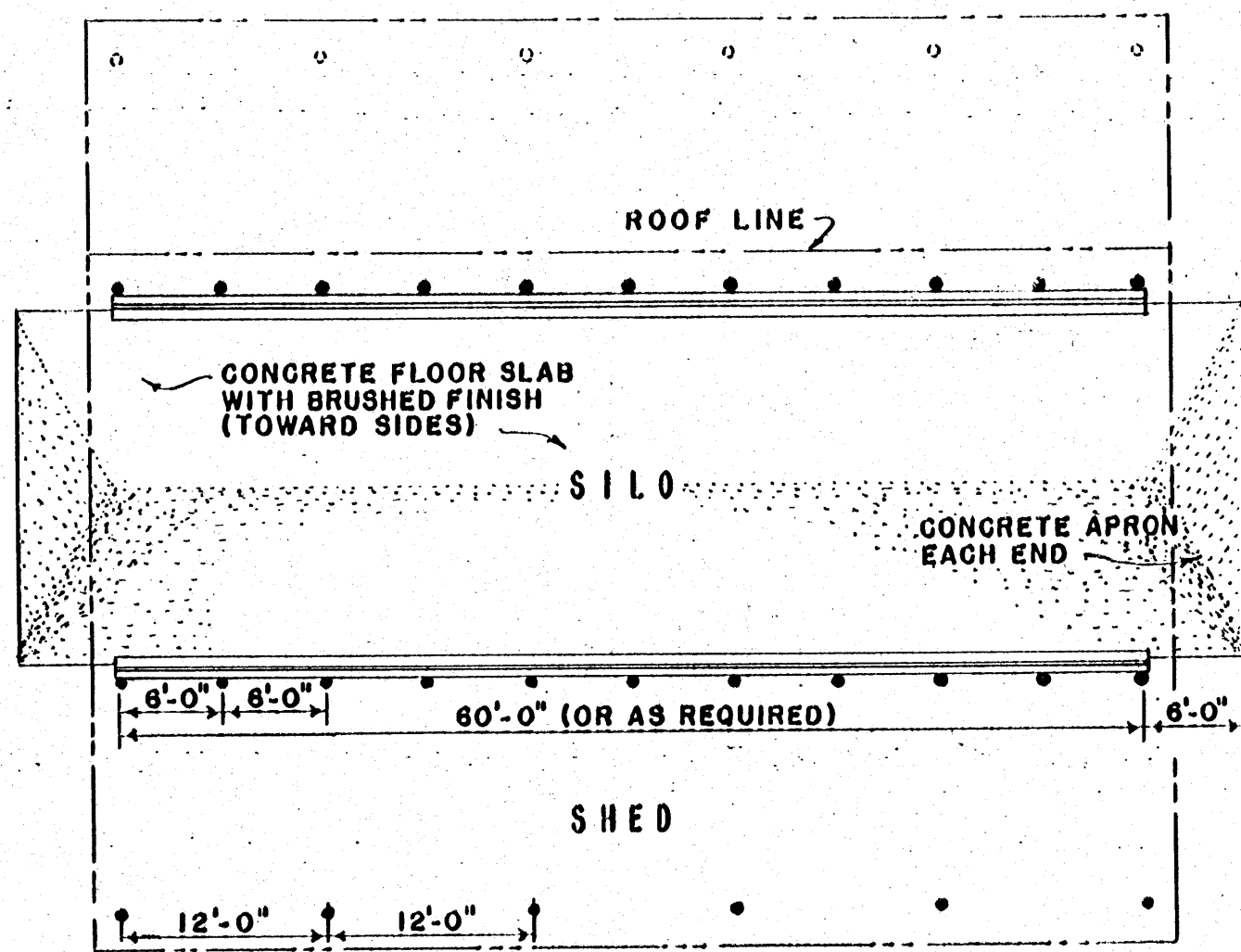
FOR SELF-FEEDING, WITH FREE ACCESS, A SILO WIDTH OF 3" TO 6" PER HEAD IS REQUIRED.

AT LEAST A 4" SLICE SHOULD BE CONSUMED PER DAY TO MINIMIZE SPOILAGE.

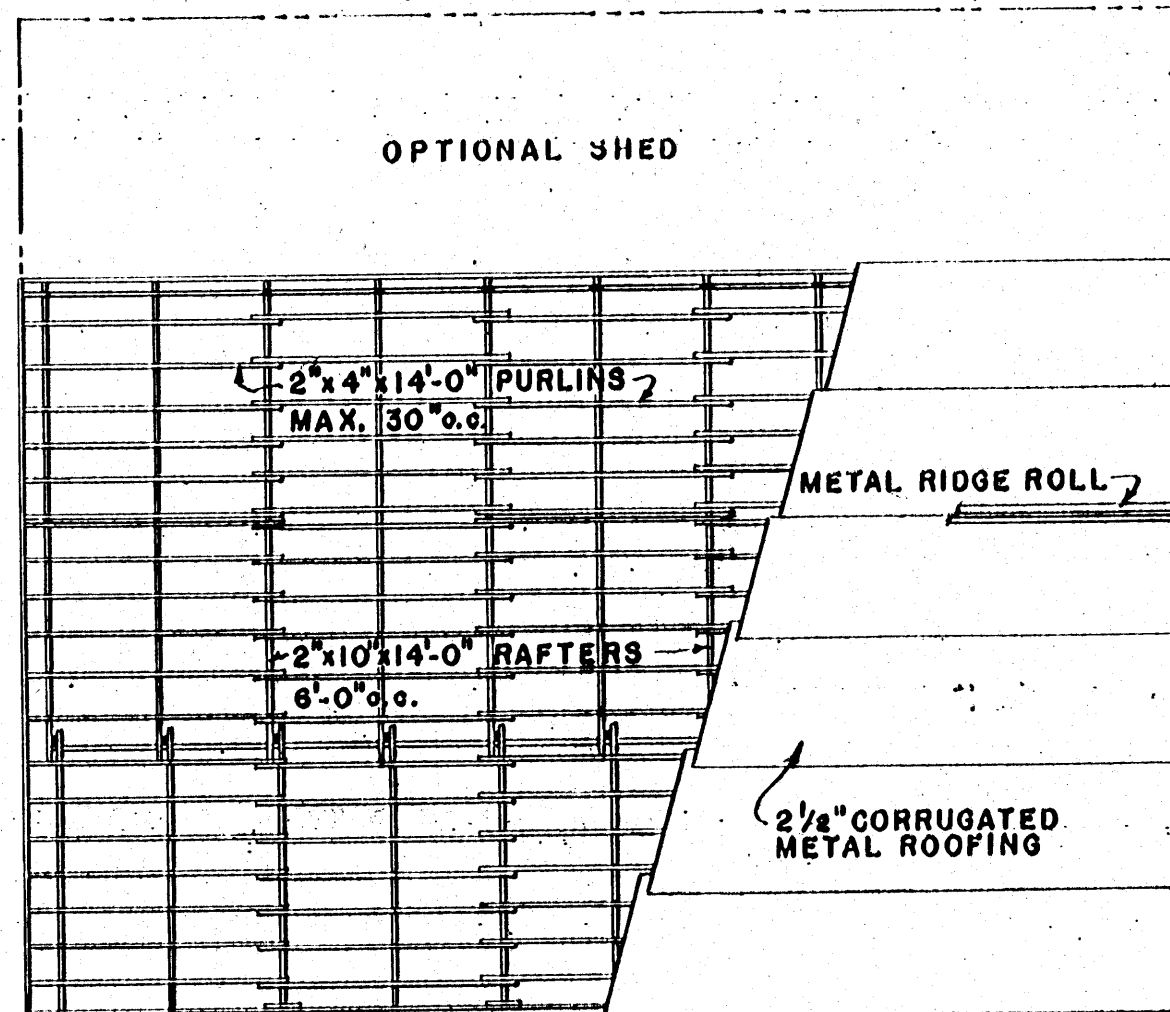


**TYPICAL CROSS SECTION**  
(SILO WITH ONE SHED)  
SCALE: 3/8" = 1'-0"

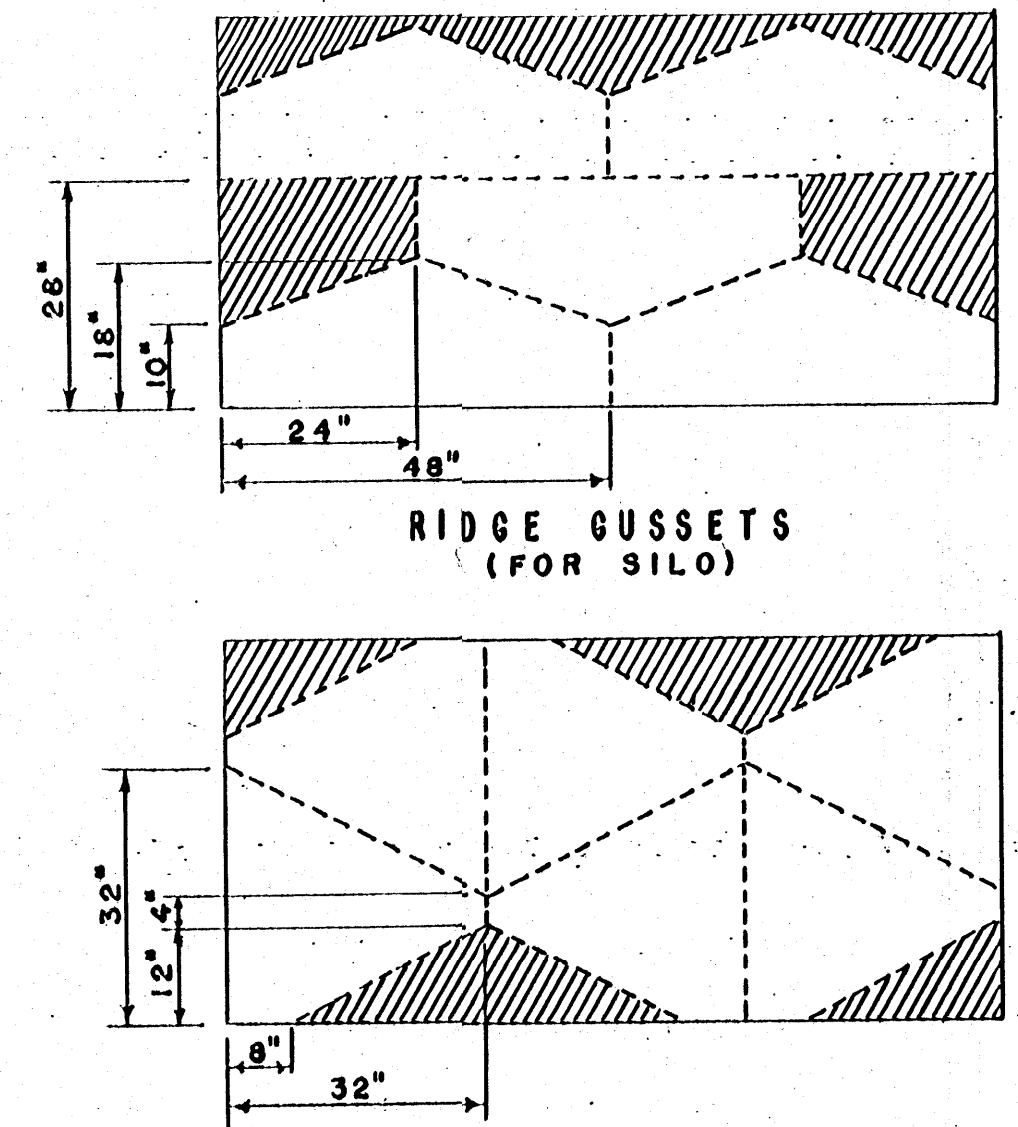
COOPERATIVE EXTENSION WORK IN AGRICULTURE AND HOME ECONOMICS		
STATE OF MISSISSIPPI		
MISSISSIPPI STATE UNIVERSITY		
UNITED STATES DEPARTMENT OF AGRICULTURE COOPERATING		
<b>BUNKER SILO</b>		
TYPE "D"		
USDA, '58	EX. 5848	SHEET 1 OF 2



**PLAN**  
SCALE:  $\frac{3}{32}'' = 1'-0''$



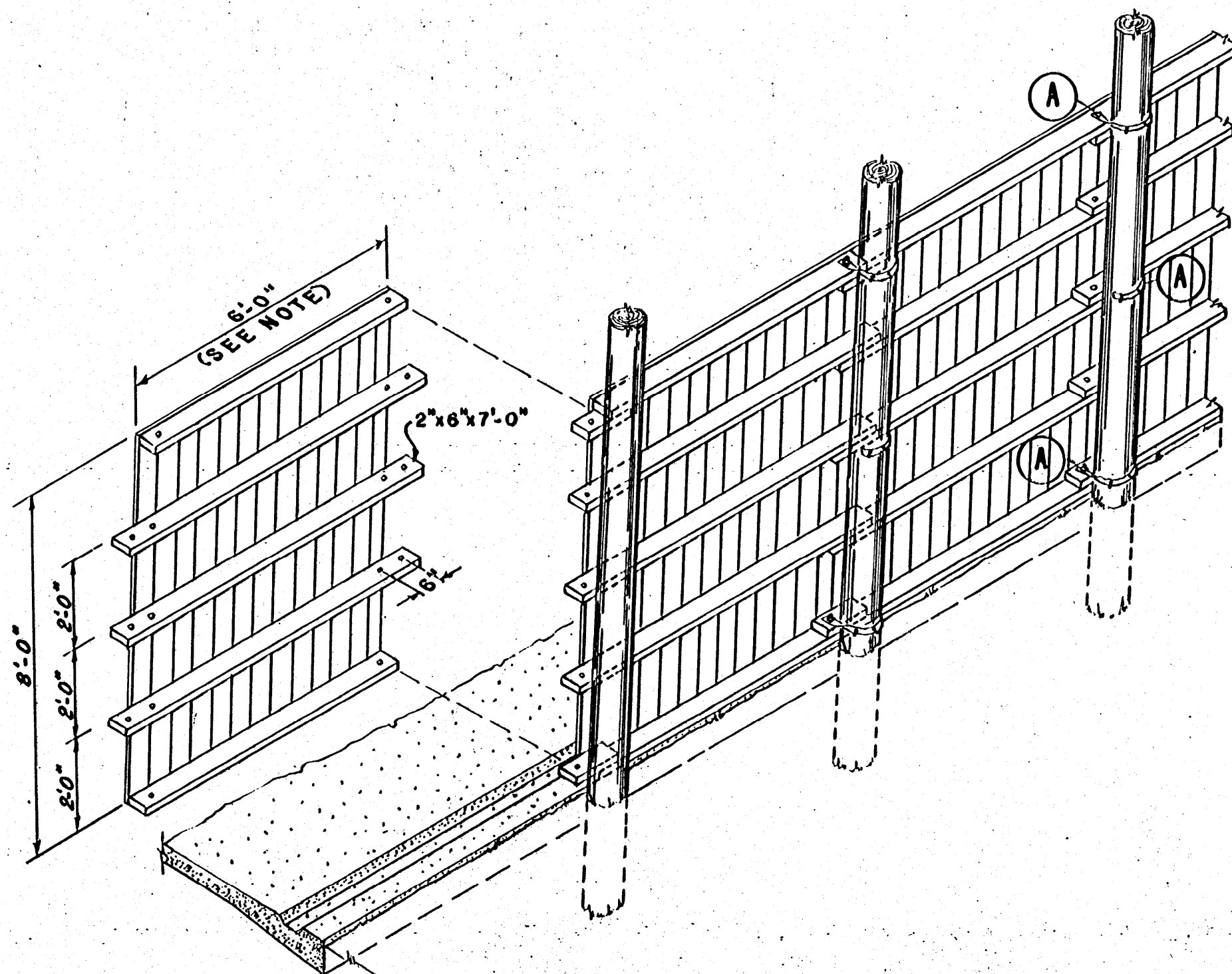
**ROOF PLAN**  
METAL ROOFING CUT-AWAY TO SHOW FRAMING  
SCALE:  $\frac{3}{32}'' = 1'-0''$



**RIDGE GUSSETS**  
(FOR SILO)

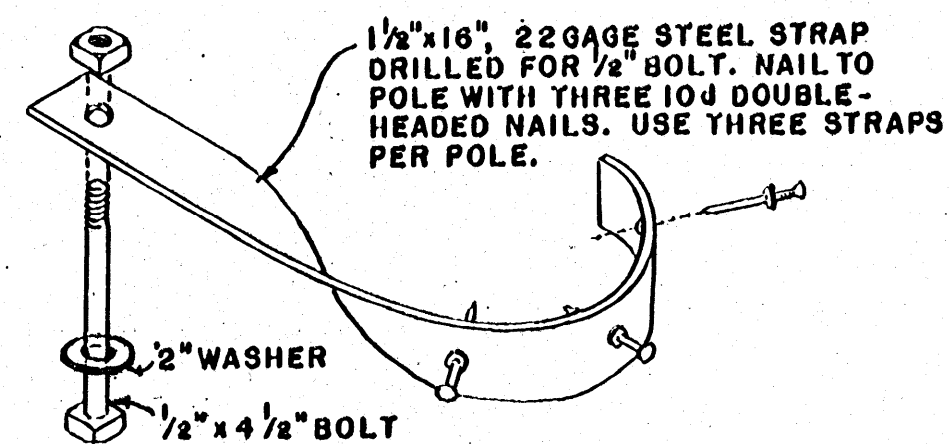
**POLE - TO - GIRDER GUSSETS**  
(FOR SHEDS)

**CUTTING DIAGRAMS**  
USE 4' x 8' PANELS OF  
 $\frac{3}{4}''$  EXTERIOR GRADE PLYWOOD



**REMOVABLE SIDE SECTIONS**

ALL SECTIONS ARE IDENTICAL, EXCEPT THOSE FOR THE ENDS. ALTERNATE SECTIONS ARE INVERTED SO GIRTS WILL LAP. BOLT HOLES IN THREE CENTER GIRTS ARE DRILLED AFTER SECTIONS ARE IN PLACE, END SECTIONS ARE 6'-6" WIDE SO GIRTS PROJECT ON ONE SIDE ONLY.



**STRAP DETAIL (A)**  
FOR FASTENING SIDES TO POLES.  
PERMANENT SIDE ANCHORED IN A  
SIMILAR MANNER.

COOPERATIVE EXTENSION WORK IN  
AGRICULTURE AND HOME ECONOMICS  
STATE OF MISSISSIPPI  
MISSISSIPPI STATE UNIVERSITY  
AND  
UNITED STATES DEPARTMENT OF AGRICULTURE COOPERATING

**BUNKER SILO**  
TYPE "D"

USDA '58 EX. 5848 SHEET 2 OF 2