

County Health Economics Profile Humphreys County, MS

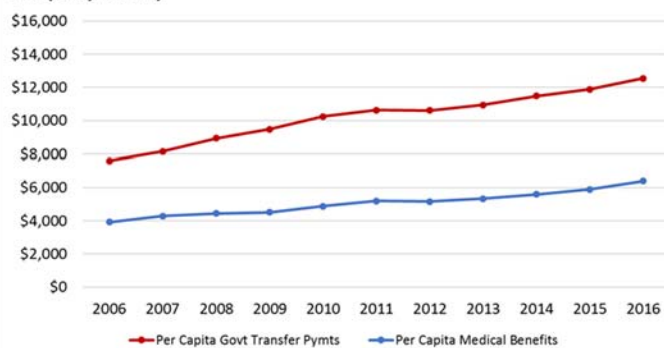
extension.msstate.edu/economic-profiles



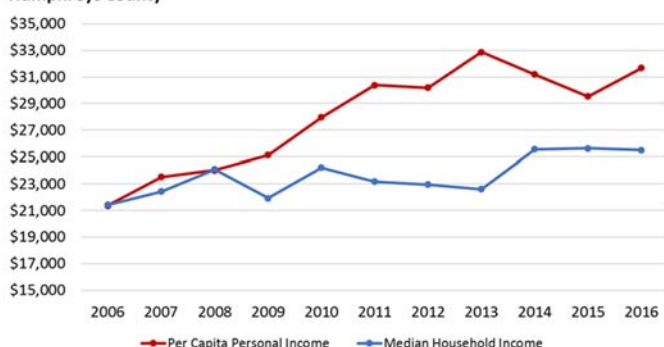
Demographics*	Humphreys	Mississippi	United States
Total Population, 2017 (Population Estimates)	8,342	2,984,100	325,719,178
Percent Change in Total Population, 2013-2017 (Population Estimates)	-6.8%	-0.2%	3.0%
Percent of the Population that is Non-white, 2012-2016 Estimate (ACS)	78.1%	41.0%	26.7%
Pct of Population that is Older than 64 years, 2012-2016 Estimate (ACS)	14.9%	14.3%	14.5%
Percent of the Population in Poverty, 2016 (SAIPE)	0.4%	0.2%	0.1%
Pct of the Population under 18 in Poverty, 2016 Estimate (SAIPE)	0.6%	.3%	.2%
Current Median Household Income, 2016 Estimate (SAIPE)	\$25,506	\$41,793	\$57,617
Not Covered by Health Insurance — 2012-2016 Estimate (ACS)	18.5%	14.6%	11.7%
Covered by Private Health Insurance Alone — 2012-2016 Estimate (ACS)	26.2%	45.2%	53.4%
Covered by Public Health Insurance Alone— 2012-2016 Estimate (ACS)	40.2%	22.9%	19.1%
Health Insurance Coverage—Other —2012-2016 Estimate (ACS)	15.0%	17.3%	15.8%

*Data source acronyms are explained in the Data Key at the end of the publication.

**Per Capita Govt Transfer Payments and Medical Benefits
Humphreys County**



**Median Household Income and Per Capita Personal Income
Humphreys County**



Economic Impact of Healthcare Sector 2017— EMSI/IMPLAN

Sector	Direct Impact	Mult	Total Impact
Output (Sales)	\$13,648,943	1.33	\$18,120,411
Labor Income	\$9,512,761	1.09	\$10,372,708
Employment	162	1.22	198

Economic Impact of Healthcare Sector 2017— EMSI/IMPLAN

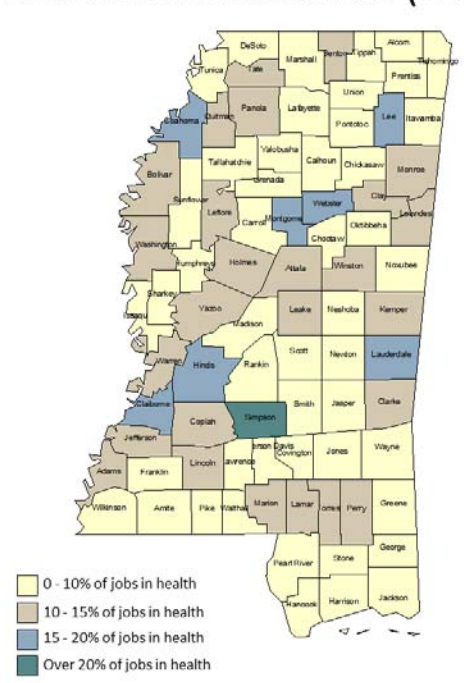
Sector Number	Sector	Jobs	Earnings
482	Hospitals	0	\$0
478	Outpatient Care	21	\$990,490
475-7	Office of prov.	33	\$2,406,110
479	Med/diag labs	0	\$0
483	Nur & Res Care	59	\$3,361,291
480	Home health	49	\$2,814,425

Gross County/State Product (GCP) (Bureau of Economic Analysis)	Humphreys		Mississippi		% Chg in Area	% of Area GCP
Sectors (Millions of dollars)	2013	2017	2013	2017	13-17	2017
Humphreys	329.23	293.47	103,523.00	111,707.00	-10.9%	0.3%
Health Care and Social Assistance	39.98	16.91	7,499.00	8,564.00	-57.7%	0.2%
Ambulatory Health Care Services	5.77	7.36	4,013.00	4,121.63	27.7%	0.2%
All Hospitals/Res Care Facilities	24.11	3.98	2,821.00	3,715.41	-83.5%	0.1%
Social Assistance	4.39	2.62	666.00	726.96	-40.3%	0.4%

Top Health Employment Sectors 2017— EMSI

NAICS	Sector	2017 Jobs	Annual Earn/Job
6231	Nursing Care Facilities (SNF)	54	\$26,815
6216	Home Health Care Services	52	\$30,489
6214	Outpatient Care Centers	24	\$47,677
6211	Offices of Physicians	20	\$52,681
6213	Offices of Other Health Prac	9	\$135,839
6233	Cont Care Ret Comm/Asst Eld Liv	3	\$21,336
6215	Medical and Diagnostic Labs	3	\$60,403
6212	Offices of Dentists	3	\$84,342

Pct of Jobs in Health Care and Social Assistance (2017)



Top Health Occupation Sectors 2017— EMSI

SOC	Sector	2017 Jobs	Annual Earnings
	Total Jobs	148	\$23,242
31-1010	Nursing/PsychHome Health Aides	50	\$9,517
29-1140	Registered Nurses	24	\$27,827
29-2060	Lic Practical/Vocational Nurses	18	\$16,914
29-1120	Therapists	10	\$34,389
31-9010	Massage Therapists	9	\$10,847
29-1060	Physicians and Surgeons	8	\$77,071
29-2050	Health Practitioner Support Tech	5	\$13,474

Health Occupations per 100,000 Population (2017)— EMSI

Sector	Occ/100k
Physicians/Surgeons (all types)	96
Reg Nurses/Spec Nurses/Phys Assts	312
Lic Practical/Vocational Nurses	216
Technologists/Technicians (all types)	168
Nursing/Psy/Home Health Aides	599
Other Practitioners	60
All Other	216

For further information, contact Alan Barefield at 662.325.7995 or alan.barefield@msstate.edu.

MISSISSIPPI COUNTY HEALTH ECONOMIC PROFILES

DATA KEY

Total Population, 2017

These data were obtained from the U.S. Census Bureau's Population Estimates tables. <http://www.census.gov>

Percent Change in Total Population, 2013-2017

These data were obtained from the 2009-2013 and 2013-2017 American Community Survey five year estimates tables. <http://www.census.gov>

Percent of the Population that is Non-white, 2016

These data were obtained from the 2012-2016 American Community Survey five year estimates tables. They show the percentage of persons for the county, state and nation who either classified themselves as multi-racial or as a race other than White. <http://www.census.gov>

Percent of the Population that is Older than 64 years, 2016

These data were obtained from the 2012-2016 American Community Survey five year estimates tables and show the proportion of persons residing in the county who report themselves to be 65 years of age and older. <http://www.census.gov>

Percent of the Population in Poverty, 2016 Estimate

These data were obtained from the Model-based Small Area Income & Poverty Estimates (SAIPE) for School Districts, Counties, and States. <http://www.census.gov/did/www/saipe>

Percent of the Total Population under 18 in Poverty, 2016 Estimate

These data were obtained from the Model-based Small Area Income & Poverty Estimates (SAIPE) for School Districts, Counties, and States. <http://www.census.gov/did/www/saipe>

Current Median Household Income, 2016 Estimate

These data were obtained from the Model-based Small Area Income & Poverty Estimates (SAIPE) for School Districts, Counties, and States. <http://www.census.gov/did/www/saipe>

Not Covered by Health Insurance, 2016

These data were obtained from the 2012-2016 American Community Survey 5-year estimates tables. The estimate the percentage of persons in the county who were not covered by any type of health insurance.

<http://www.census.gov>

Covered by Private Health Insurance, 2016

These data were obtained from the 2012-2016 American Community Survey 5-year estimates tables. The estimate the percentage of persons in the county who were covered by some form of private health insurance.

<http://www.census.gov>

Covered by Public Insurance, 2016

These data were obtained from the 2012-2016 American Community Survey 5-year estimates tables. The estimate the percentage of persons in the county who were covered by some form of public health insurance.

<http://www.census.gov>

Per Capita Transfer Payments (Total Govt Payments and Govt Medical Benefits)

These data were obtained from the Bureau of Economic Analysis Local Area Personal Income and Employment Table CA35. They show the values of total government-paid transfer payments and medical transfer payments paid by the government.

<http://bea.gov>

Median Household Income and Per Capita Personal Income

These data were obtained from the Small Area Income and Poverty Estimates and the Bureau of Economic Analysis Personal Income and Employment Table CA1-3. They show the levels of median household income (defined above) and per capita personal income (total personal income divided by the county's population) for the county.

<http://www.census.gov/did/www/saipe>

<http://bea.gov>

Economic Impact of Healthcare Sector, 2017 (1st table)

These estimates were calculated using input-output methodologies by the IMPLAN software from labor and earnings data provided by the Economic Modeling Specialists, Inc. proprietary database. They show the total output (all sales), labor income and employment estimates and multipliers for the direct and total economic impact of six economic sectors (Offices of physicians, dentists, and other health practitioners; Home health care services; Medical and diagnostic labs and outpatient and other ambulatory services; Nursing and residential care facilities; Private hospitals; and Public hospitals that used the spending patterns of private hospitals as a proxy).

<http://www.implan.com>

<http://www.economicmodeling.com>

Economic Impact of Healthcare Sector, 2016 (2nd table)

These are estimates of the total number of jobs and labor income resulting from the presence of the healthcare sector in the county. They were estimated using the IMPLAN software and are a result of the information gleaned from the Economic Impact of Healthcare Sector (1st table) above.

<http://www.implan.com>

<http://www.economicmodeling.com>

Gross County/State Product

Initial estimates of Gross State Product were obtained from the Bureau of Economic Analysis' estimates of Gross Domestic Product by State in current dollars. These estimates were apportioned to the counties and industries by using county sectoral employment estimates obtained from the Economic Modeling Specialists, Inc., proprietary database.

<http://www.bea.gov>

<http://www.economicmodeling.com>

Top Health and Social Assistance Employment Sectors, 2017

These estimates were obtained from the Economic Modeling Specialists, Inc., proprietary database. The largest employment NAICS code sectors for 2016 were captured for the county. This database also supplied estimates for the annual earnings per job.

<http://economicmodeling.com>

Top Health and Social Assistance Occupation Sectors, 2017

These estimates were obtained from the Economic Modeling Specialists, Inc., proprietary database. The largest SOC occupation code sectors for 2017 were captured for the county. This database also supplied estimates for the average annual earnings per occupation.

<http://economicmodeling.com>

Percentage of Jobs in the Healthcare Sector, 2017

These estimates were obtained from the Economic Modeling Specialists, Inc., proprietary database. The map shows the percentage of total jobs within the county that are directly involved with healthcare. Sectors used as direct healthcare sectors are: Offices of physicians, dentists, and other health practitioners; Home health care services; Medical and diagnostic labs and outpatient and other ambulatory services; Nursing and residential care facilities; Private hospitals; and Public hospitals.

<http://economicmodeling.com>

Health Occupations per 100,000 Population, 2017

These estimates were obtained from the Economic Modeling Specialists, Inc., proprietary database. In an effort to ease comparisons of the numbers of occupations for a particular health-related sector in a county or region, the numbers of occupations existing within a county were indexed to a 100,000 population rate.

Aggregated sectors are composed of the following:

Physicians/Surgeons (all types)

- Sector 29-1060—Physicians and Surgeons

Registered Nurses/Specialized Nurses/Physician Assistants

- Sector 29-1070—Physician Assistants
- Sector 29-1140—Registered Nurses
- Sector 29-1150—Nurse Anesthetists
- Sector 29-1160—Nurse Midwives
- Sector 29-1170—Nurse Practitioners

Licensed Practical and Vocational Nurses

- Sector 29-2060—Licensed Practical and Licensed Vocational Nurses

Technologists/Technicians (all types)

- Sector 29-2010—Clinical Laboratory Technologists and Technicians
- Sector 29-2030—Diagnostic Related Technologists and Technicians
- Sector 29-2040—Emergency Medical Technicians and Paramedics
- Sector 29-2050—Health Practitioner Support Technologists and Technicians
- Sector 29-2070—Medical Records and Health Information Technicians
- Sector 29-2090—Miscellaneous Health Technologists and Technicians
- Sector 29-9010—Occupational Health and Safety Specialists and Technicians

Nursing/Psychiatric/Home Health Aides

- Sector 31-1010—Nursing, Psychiatric, and Home Health Aides

Other Practitioners

- Sector 29-1010—Chiropractors
- Sector 29-1020—Dentists
- Sector 29-1040—Optometrists
- Sector 29-1050—Pharmacists
- Sector 29-1080—Podiatrists

Other

- Sector 29-1030—Dietitians and Nutritionists
- Sector 29-1120—Therapists
- Sector 29-1190—Miscellaneous Health Diagnosing and Treating Practitioners
- Sector 29-9090—Miscellaneous Health Practitioners and Technical Workers
- Sector 31-2010—Occupational Therapy Assistants and Aides
- Sector 31-2020—Physical Therapy Assistants and Aides

<http://economicmodeling.com>

Publication P2978-28 (POD-06-18)

By **Alan Barefield**, Extension Professor, Department of Agricultural Economics, **Hannah Irwin**, Student Assistant, Department of Agricultural Economics, and **Ellen Moore**, Student Assistant, Department of Agricultural Economics.

Copyright 2018 by Mississippi State University. All rights reserved. This publication may be copied and distributed without alteration for nonprofit educational purposes provided that credit is given to the Mississippi State University Extension Service.

Mississippi State University is an equal opportunity institution. Discrimination in university employment programs or activities based on race, color, ethnicity, sex, pregnancy, religion, national origin, disability, age, sexual orientation, genetic information, status as a U.S. veteran, or any other status protected by applicable law is prohibited. Questions about equal opportunity programs or compliance should be directed to the Office of Compliance and Integrity, 56 Morgan Avenue, P.O. Box 6044, Mississippi State, MS 39762, (662) 325-5839.

Extension Service of Mississippi State University, cooperating with U.S. Department of Agriculture. Published in furtherance of Acts of Congress, May 8 and June 30, 1914. GARY B. JACKSON, Director