

County Health Economics Profile

MS Congressional District 4

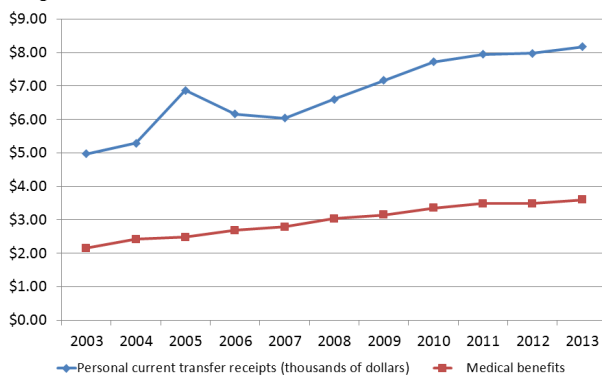
msucares.com/crd/county_profiles



MISSISSIPPI STATE
UNIVERSITY
EXTENSION SERVICE

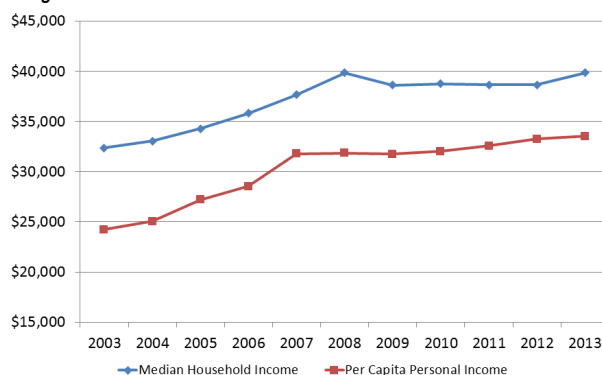
Demographics	Congres- sional 4	Mississippi	United States
Total Population, 2014 (Census)	776,475	2,994,079	318,857,056
Percent Change in Total Population, 2010-2013 (Census)	2.6%	0.9%	3.3%
Percent of the Population that is Non-white, 2013 (Census)	26.5%	39.7%	21.6%
Pct of Population that is Older than 64 years, 2013 (Census)	13.2%	13.1%	13.4%
Percent of the Population in Poverty, 2013 (SAIPE)	21.5%	23.9%	15.8%
Pct of the Population under 18 in Poverty, 2013 Estimate (SAIPE)	24.6%	34.0%	22.2%
Current Median Household Income, 2013 Estimate (SAIPE)	\$39,449	\$38,191	\$52,250
Not Covered by Health Insurance — 2013 (Census)	19.3%	17.4%	14.9%
Covered by Private Health Insurance — 2013 (Census)	57.6%	56.8%	66.0%
Covered by Public Health Insurance — 2013 (Census)	34.3%	36.4%	30.2%

Per Capita Transfer Payments (Total Govt Payments and Govt Medical Benefits)
Congressional District 4



Source: Bureau of Economic Analysis

Median Household Income and Per Capita Personal Income
Congressional District 4



Median Household Income was estimated by averaging county household income across the district

Source: Bureau of Economic Analysis

Economic Impact of Healthcare Sector 2014— EMSI/IMPLAN

Sector	Direct Impact	Mult	Total Impact
Output (Sales)	\$2,331,576,676	1.81	\$4,208,831,037
Labor Income	\$3,053,291,274	1.16	\$3,541,908,803
Employment	52,281	1.31	68,519

Economic Impact of Healthcare Sector 2014— EMSI/IMPLAN

Sector	Sector	Jobs	Earnings
482	Hospitals	35,552	\$1,846,324,672
478	Outpatient Care	598	\$33,245,921
475-7	Office of prov.	9,157	\$875,162,126
478	Med/diag labs	598	\$33,245,921
483	Nur & Res Care	4,378	\$153,112,477
480	Home health	1,650	\$97,974,253

Gross County/State Product (Bureau of Economic Analysis)	Adams County		Mississippi		% Chg in County	% of County GCP
Top Ten Sectors (Millions of dollars)	2010	2014	2010	2014	10-14	2014
Total Gross County Product	23,848	25,235	95,539	104,851	5.8%	100.0%
Total Healthcare	1,301	1,490	7,024	7,729	14.5%	5.9%
Ambulatory Health Care Services	357	418	3,777	4,232	17.0%	1.7%
All Hospitals/Res Care Facilities	158	169	2,631	2,837	7.5%	0.7%
Social Assistance	19	23	616	660	19.4%	0.1%

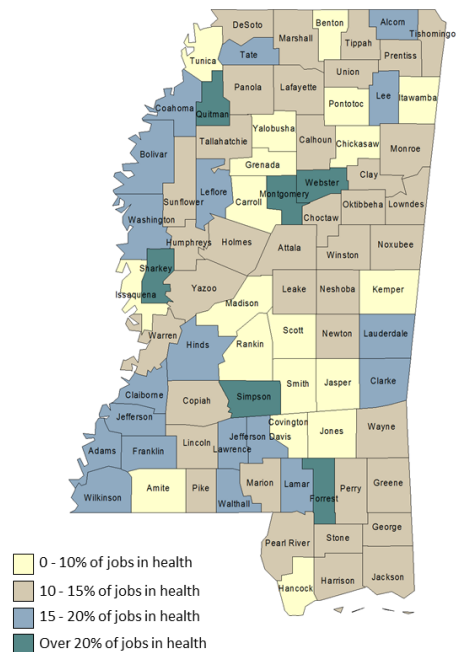
Top Health & Social Assistance Employment Sectors 2014— EMSI

NAICS	Sector	2014 Jobs	Ann Earn/Job
90362	Hospitals (Local Govt)	11,276	\$69,146
6211	Offices of Physicians	6,123	\$85,234
6231	Skilled Nursing Care Fac	3,384	\$36,118
6221	Gen Med/Surgical Hospitals	2,524	\$50,962
6244	Child Day Care Services	2,062	\$19,364
6241	Individual/Family Services	1,684	\$23,254

Top Health & Social Assistance Occupation Sectors 2014— EMSI

SOC	Sector	2014 Jobs	Median Hr Earn
	Total	25,817	\$24.24
29-1140	Registered Nurses	6,810	\$26.17
31-1010	Nursing/Psy/Home Health Aides	4,470	\$9.99
31-9090	Misc Healthcare Support Occ	2,241	\$12.91
29-2060	Lic Practical/Lic Voc Nurses	2,011	\$17.29
29-2050	Health Pract Support Techs	1,697	\$14.56
29-1120	Therapists	1,364	\$30.05
29-1060	Physicians and Surgeons	955	\$96.03

Percentage of Jobs in Health Care Sector (2014)



Health Occupations per 100,000 Population (2014)— EMSI

Sector	Occup
Physicians/Surgeons (all types)	124
Reg Nurses/Nurse Pract/Phys Assts	951
Lic Practical/Vocational Nurses	259
Technologist/Technicians (all types)	532
Nursing/Psy/Home Health Aides	576

Discrimination based upon race, color, religion, sex, national origin, age, disability, or veteran's status is a violation of federal and state law and MSU policy and will not be tolerated. Discrimination based upon sexual orientation or group affiliations is a violation of MSU policy and will not be tolerated.

Data assembled by Alan Barefield, Lauren Behel, Shelby Hayes, and Cassidy Pitts, Dept of Agricultural Economics, Mississippi State University Extension Service. For further information, contact Alan Barefield at 662.325.7995 or alan.barefield@msstate.edu.