

County Health Economics Profile

MS Congressional District 3

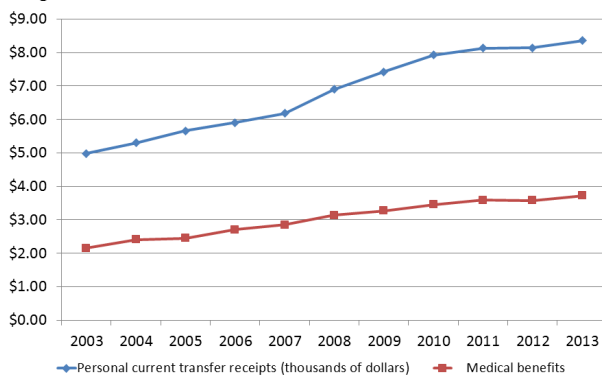
msucares.com/crd/county_profiles



MISSISSIPPI STATE
UNIVERSITY
EXTENSION SERVICE

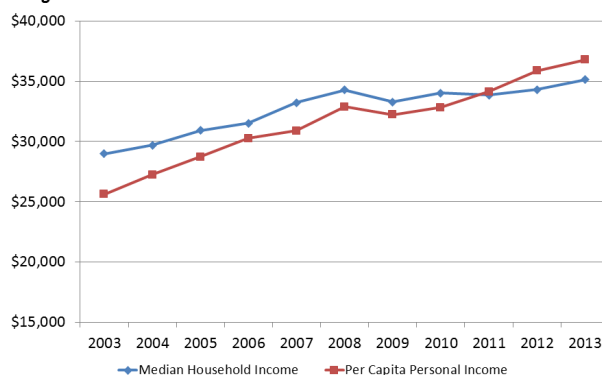
Demographics	Congres- sional 3	Mississippi	United States
Total Population, 2014 (Census)	995,075	2,994,079	318,857,056
Percent Change in Total Population, 2010-2013 (Census)	0.7%	0.9%	3.3%
Percent of the Population that is Non-white, 2013 (Census)	47.2%	39.7%	21.6%
Pct of Population that is Older than 64 years, 2013 (Census)	12.9%	13.1%	13.4%
Percent of the Population in Poverty, 2013 (SAIPE)	24.0%	23.9%	15.8%
Pct of the Population under 18 in Poverty, 2013 Estimate (SAIPE)	25.1%	34.0%	22.2%
Current Median Household Income, 2013 Estimate (SAIPE)	\$35,134	\$38,191	\$52,250
Not Covered by Health Insurance — 2013 (Census)	16.0%	17.4%	14.9%
Covered by Private Health Insurance — 2013 (Census)	58.8%	56.8%	66.0%
Covered by Public Health Insurance — 2013 (Census)	35.7%	36.4%	30.2%

Per Capita Transfer Payments (Total Govt Payments and Govt Medical Benefits)
Congressional District 3



Source: Bureau of Economic Analysis

Median Household Income and Per Capita Personal Income
Congressional District 3



Median Household Income was estimated by averaging county household income across the district

Source: Bureau of Economic Analysis

Economic Impact of Healthcare Sector 2014— EMSI/IMPLAN

Sector	Direct Impact	Mult	Total Impact
Output (Sales)	\$4,903,634,647	1.76	\$8,623,307,111
Labor Income	\$4,008,262,498	1.28	\$5,128,555,678
Employment	70,580	1.44	101,316

Economic Impact of Healthcare Sector 2014— EMSI/IMPLAN

Sector	Sector	Jobs	Earnings
482	Hospitals	44,837	\$2,163,492,648
478	Outpatient Care	1,283	\$101,318,004
475-7	Office of prov.	11,370	\$1,194,859,730
478	Med/diag labs	1,283	\$101,318,004
483	Nur & Res Care	7,146	\$228,671,267
480	Home health	2,740	\$180,192,141

Gross County/State Product (Bureau of Economic Analysis)	Adams County		Mississippi		% Chg in County	% of County GCP
Top Ten Sectors (Millions of dollars)	2010	2014	2010	2014	10-14	2014
Total Gross County Product	37,912	37,466	95,539	104,851	-1.2%	100.0%
Total Healthcare	2,883	3,159	7,024	7,729	9.6%	8.4%
Ambulatory Health Care Services	497	570	3,777	4,232	14.8%	1.5%
All Hospitals/Res Care Facilities	525	534	2,631	2,837	1.9%	1.4%
Social Assistance	49	57	616	660	15.5%	0.2%

Top Health & Social Assistance Employment Sectors 2014— EMSI

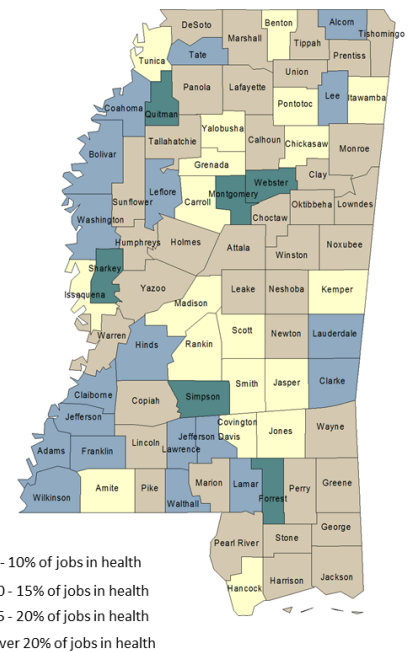
NAICS	Sector	2014 Jobs	Ann Earn/Job
6221	Gen Med/Surgical Hospitals	12,508	\$56,388
6211	Offices of Physicians	7,167	\$88,786
6241	Individual/Family Services	6,885	\$19,954
6231	Skilled Nursing Care Fac	5,338	\$30,253
90362	Hospitals (Local Govt)	4,058	\$60,225
6244	Child Day Care Services	3,150	\$17,937

Top Health & Social Assistance Occupation Sectors 2014— EMSI

SOC	Sector	2014 Jobs	Median Hr Earn
	Total	47,073	\$22.80
31-1010	Nursing/Psy/Home Health Aides	13,602	\$9.84
29-1140	Registered Nurses	11,962	\$28.21
29-2060	Lic Practical/Lic Voc Nurses	3,239	\$17.54
31-9090	Misc Healthcare Support Occ	2,539	\$13.96
29-2050	Health Pract Support Techs	2,385	\$14.44
29-1120	Therapists	2,383	\$31.33
29-1060	Physicians and Surgeons	1,852	\$70.12

Discrimination based upon race, color, religion, sex, national origin, age, disability, or veteran's status is a violation of federal and state law and MSU policy and will not be tolerated. Discrimination based upon sexual orientation or group affiliations is a violation of MSU policy and will not be tolerated.

Percentage of Jobs in Health Care Sector (2014)



Health Occupations per 100,000 Population (2014)— EMSI

Sector	Occup
Physicians/Surgeons (all types)	187
Reg Nurses/Nurse Pract/Phys Assts	1,300
Lic Practical/Vocational Nurses	326
Technologist/Technicians (all types)	606
Nursing/Psy/Home Health Aides	1,367

Data assembled by Alan Barefield, Lauren Behel, Shelby Hayes, and Cassidy Pitts, Dept of Agricultural Economics, Mississippi State University Extension Service. For further information, contact Alan Barefield at 662.325.7995 or alan.barefield@msstate.edu.