

# County Health Economics Profile

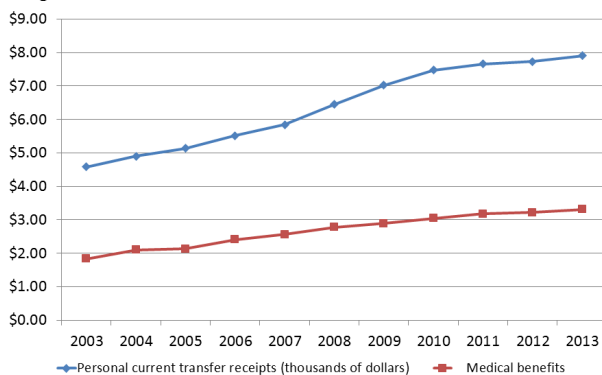
## MS Congressional District 1

[msucares.com/crd/county\\_profiles](http://msucares.com/crd/county_profiles)



Demographics	Congressional 1	Mississippi	United States
Total Population, 2014 (Census)	802,838	2,994,079	318,857,056
Percent Change in Total Population, 2010-2013 (Census)	2.1%	0.9%	3.3%
Percent of the Population that is Non-white, 2013 (Census)	29.1%	39.7%	21.6%
Pct of Population that is Older than 64 years, 2013 (Census)	13.3%	13.1%	13.4%
Percent of the Population in Poverty, 2013 (SAIPE)	20.7%	23.9%	15.8%
Pct of the Population under 18 in Poverty, 2013 Estimate (SAIPE)	24.5%	34.0%	22.2%
Current Median Household Income, 2013 Estimate (SAIPE)	\$37,000	\$38,191	\$52,250
Not Covered by Health Insurance — 2013 (Census)	16.1%	17.4%	14.9%
Covered by Private Health Insurance — 2013 (Census)	60.8%	56.8%	66.0%
Covered by Public Health Insurance — 2013 (Census)	34.3%	36.4%	30.2%

Per Capita Transfer Payments (Total Govt Payments and Govt Medical Benefits)  
Congressional District 1

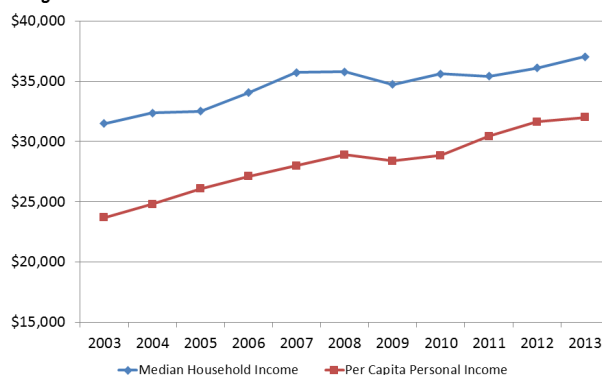


Source: Bureau of Economic Analysis

### Economic Impact of Healthcare Sector 2014— EMSI/IMPLAN

Sector	Direct Impact	Mult	Total Impact
Output (Sales)	\$3,158,595,648	1.58	\$4,995,127,308
Labor Income	\$2,693,861,656	1.19	\$3,192,439,246
Employment	51,180	1.34	68,645

Median Household Income and Per Capita Personal Income  
Congressional District 1



Median Household Income was estimated by averaging county household income across the district

Source: Bureau of Economic Analysis

### Economic Impact of Healthcare Sector 2014— EMSI/IMPLAN

Sector	Sector	Jobs	Earnings
482	Hospitals	33,439	\$1,562,458,715
478	Outpatient Care	668	\$42,769,538
475-7	Office of prov.	8,348	\$759,239,078
478	Med/diag labs	668	\$42,769,538
483	Nur & Res Care	6,011	\$185,613,402
480	Home health	1,460	\$86,675,178

Gross County/State Product (Bureau of Economic Analysis)	Adams County		Mississippi		% Chg in County	% of County GCP
Top Ten Sectors (Millions of dollars)	2010	2014	2010	2014	10-14	2014
Total Gross County Product	21,688	24,810	95,539	104,851	14.4%	100.0%
Total Healthcare	1,762	1,976	7,024	7,729	12.1%	8.0%
Ambulatory Health Care Services	315	379	3,777	4,232	20.4%	1.5%
All Hospitals/Res Care Facilities	361	383	2,631	2,837	6.4%	1.5%
Social Assistance	19	20	616	660	8.7%	0.1%

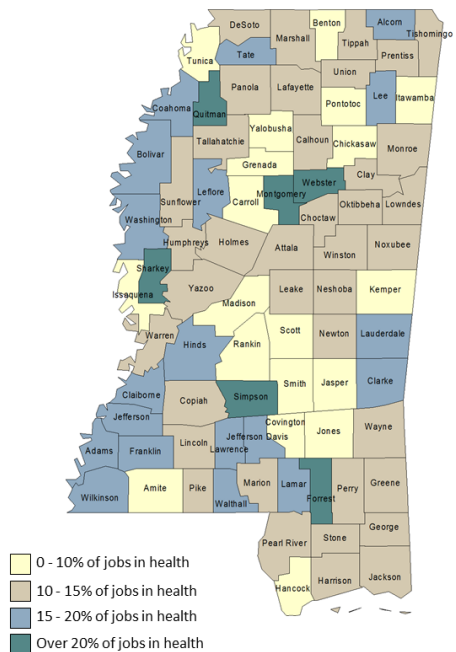
### Top Health & Social Assistance Employment Sectors 2014— EMSI

NAICS	Sector	2014 Jobs	Ann Earn/Job
6221	Gen Med/Surgical Hospitals	9,403	\$52,195
6211	Offices of Physicians	5,364	\$85,190
6231	Skilled Nursing Care Fac	4,541	\$31,089
90362	Hospitals (Local Govt)	2,351	\$55,655
6244	Child Day Care Services	2,085	\$19,581
6212	Offices of Dentists	1,553	\$52,169

### Top Health & Social Assistance Occupation Sectors 2014— EMSI

SOC	Sector	2014 Jobs	Median Hr Earn
	Total	23,824	\$23.67
29-1140	Registered Nurses	5,910	\$26.16
31-1010	Nursing/Psy/Home Health Aides	4,653	\$9.34
29-2060	Lic Practical/Lic Voc Nurses	2,226	\$17.40
31-9090	Misc Healthcare Support Occ	2,052	\$13.72
29-2050	Health Pract Support Techs	1,788	\$14.50
29-1120	Therapists	1,260	\$30.20
29-2030	Diagnostic Related Techs	818	\$25.43

### Percentage of Jobs in Health Care Sector (2014)



### Health Occupations per 100,000 Population (2014)— EMSI

Sector	Occup
Physicians/Surgeons (all types)	96
Reg Nurses/Nurse Pract/Phys Assts	799
Lic Practical/Vocational Nurses	277
Technologist/Technicians (all types)	474
Nursing/Psy/Home Health Aides	580

Discrimination based upon race, color, religion, sex, national origin, age, disability, or veteran's status is a violation of federal and state law and MSU policy and will not be tolerated. Discrimination based upon sexual orientation or group affiliations is a violation of MSU policy and will not be tolerated.

Data assembled by Alan Barefield, Lauren Behel, Shelby Hayes, and Cassidy Pitts, Dept of Agricultural Economics, Mississippi State University Extension Service. For further information, contact Alan Barefield at 662.325.7995 or [alan.barefield@msstate.edu](mailto:alan.barefield@msstate.edu).