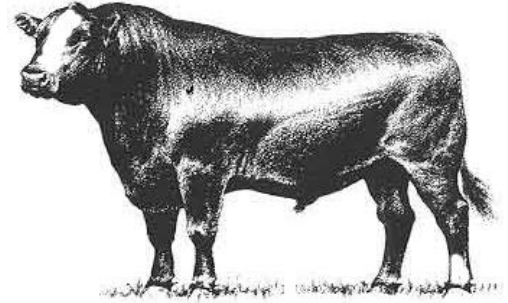


Hinds Community College Bull Test
Mississippi Beef Cattle Improvement Association
2020 Spring Bull Sale

Thursday, March 5, 2020 • 12:00 Noon
Hinds Community College
1310 Seven Springs Road, Raymond, MS



**MISSISSIPPI STATE UNIVERSITY™
EXTENSION**

Dear Cattle Producers:

The Hinds Community College Bull Test and Mississippi Beef Cattle Improvement Association cattle marketing partnership is a proven source for breeding cattle that build profits. In today's cattle market, the payoffs from using quality herd sires make acquiring high quality genetics a must for producers.

We recognize that quality bulls are essential to producing profitable calf crops. Time and time again our bull buyers cite the breed leading genetics, environmental adaptability, freight, and customer service advantages of purchasing bulls raised in Mississippi. All bulls in our spring sale are screened for structure, disposition, and performance and are guaranteed as breeders. These bulls have passed breeding soundness examinations, met minimum growth and scrotal circumference requirements, and represent quality genetics.

As an added attraction, the Mississippi BCIA will host its annual membership meeting at the sale site starting at 6:00 p.m. on Wednesday, March 4, 2020. Attendees will also have an opportunity to view the sale cattle. The supper and program are open to the public. Please RSVP to Mari Quinn at 662-325-3516 or m.quinn@msstate.edu if you plan to attend the Wednesday evening activities.

The sale will be broadcast live from the Raymond sale site over the Extension distance education system. A link to the sale site will be available at extension.msstate.edu/beef.

The cattle will be available for viewing at the Hinds Community College Sale Facility in Raymond, MS starting on the afternoon of March 4. BCIA members, breeders, and Extension personnel will be glad to assist you in selecting breeding cattle that will work well for your operation. We look forward to seeing you at the sale on March 5.

Sincerely,

Kenny Baner

Hinds Bull Test Manager

Brandi B. Karisch

Extension Beef Cattle Specialist

Consignors

- Monogram Farms
- Fitch Brothers Charolais
- 4 Roots Farm, LLC
- Good Cattle Company
- Thames Angus Farm
- Yankee Cutoff Angus Ranch
- Mississippi State University
- McBride Cattle Company
- MBK Cattle



M I S S I S S I P P I
BCIA
BEEF CATTLE IMPROVEMENT ASSOCIATION

Consignor Contact Information

Monogram Farms (Angus)

Roland Preuss
1614 Ford Road
Terry, MS 39170
601-878-5896

Fitch Brothers Charolais (Charolais)

Coy & Jerome Fitch
113 St. Germain Street
Jeanerette, LA 70544
(337) 376-5991, (337) 579-3422

4 Roots Farm, LLC (Charolais)

Wesley Ferguson
502 Canterbury Rd.
Starkville, MS 39759
662-694-9000
wf@fergusonandcoats.com

Good Cattle Company (Charolais)

Phillip Good
3590 Prairie Point Road
Macon, MS 39341
662-361-7227
goodcattlecompany@gmail.com

Thames Angus Farm (Angus)

Tony Thames
187 Carmel New Hope Rd
Jayess, MS 39641
(601) 756-1357
thamesfarm@gmail.com

Yankee Cutoff Angus Ranch (Angus)

Crystal or Carl Schossow
18341 Yankee Cutoff Road
Saucier, MS 39574
228-326-3371, 228-234-3210
ycarangus@aol.com

Mississippi State University Beef Unit (Angus & Hereford)

Bryan Carter & Brandi Karisch
Box 9815
Mississippi State, MS 39762
Bryan: (541) 377-0440
Brandi: (662) 325-7465
brandi.karisch@msstate.edu

McBride Cattle Company (Hereford)

Warner McBride
7763 Eureka Road
Courtland, MS 38620
662-578-1373
warnermcbride@gmail.com

MBK Cattle (Simmental)

Matt and Brandi Karisch
647 Polly Bell Road
Starkville, MS 39759
Matt: 979-249-6172
mbkcattle@gmail.com

Terms, Conditions, and General

TERMS: Terms of the sale are cash. Settlements are to be made with the clerk immediately after the conclusion of the auction. The Mississippi Beef Cattle Improvement Association acts as an agent only. The contract is between the buyer and seller.

BIDDING & DISPUTES: All cattle will be sold at public auction to the highest bidder. The auctioneer will settle any disputes concerning bids, and auctioneer decisions will be final. *Auctioneer: Jarvene Shackelford - American Livestock Brokers: H: (662) 837-4904 | Mobile: (662) 837-1776*

HEALTH: Health papers from licensed veterinarians accompany cattle to the sale. It is the responsibility of the buyer to know the health restrictions of his/her state and be aware of the possibility of any subsequent testing of animals purchased through this sale as required by law.

REGISTRATION: All bulls have been registered with their respective breed associations. Properly signed certificate of registry transfers will be furnished to the buyer.

BREEDING GUARANTEE: Animals are guaranteed to be without defects, but nothing more.

Bulls: All sale bulls will have documentation of a passed breeding soundness exam, including scrotal measurements within 30 days prior to sale. Scrotal circumference measurement minimums for sale bulls are 32 cm for 12–16 month old bulls, 34 cm for 17–23 month old bulls, and 36 cm for 24+ month old bulls. Bulls failing to breed after a trial of six months may be returned to the seller, if in good condition. The seller reserves the right to try said animal for six months, and if he proves to be a breeder, to return him to the buyer at the buyer's expense. If the bull proves to be a non-breeder, a satisfactory exchange will be made or purchase price refunded.

Sale Information

ANNOUNCEMENTS: Announcements made from the auction block on sale day shall take precedence over information printed in the catalog. It is therefore the buyer's responsibility to pay attention to any such announcements.

PROCESSING FOR SALE: Cattle are to be delivered to the sale location by 12:00 noon on March 6, 2019 (the day preceding the sale). Cattle will be weighed, beginning at 1:00 p.m. that day and available for viewing afterwards.

SALE ORDER: Hinds Bull Test Bulls will sell first based on an index (2 x WDA + 1 x ADG)/3. The MBCIA bulls will sell based on individual performance data, EPDs, general conformation and quality. A selection index based on the individual bull's score in the following categories will be used to rank bulls for determination of sale order (highest scoring will sell first); CE or BW EPD (max of 5 points), WW EPD (max. of 7.5 points), YW EPD (max. of 7.5 points), scrotal circumference (max. of 5 points), weight per day of age (max. of 15 points), IMF EPD (max of 5 points), REA EPD (max of 5 points), and visual appraisal (max. of 40 points). Five points will be added to a bull's selection index total if ultrasound scan results are provided.

CATTLE REMOVAL: Cattle purchased will be cared for 24 hours after the conclusion of the sale without charge. Arrangements for removal from grounds must be made at the conclusion of the 24 hours.

LIABILITY: All persons who attend this sale do so at their own risk. The owners and sponsors assume no responsibility, legal or otherwise, for any accidents that may occur.

Explanation of Performance Records

Bull Designations

Bulls meeting certain expected progeny difference (EPD) requirements are noted with one or more of the following designations:

- **Balanced Trait:** *should provide moderation for calving ease, growth, and milking ability*
- **Terminal:** *should produce calves with exceptional growth performance*
- **Calving Ease:** *should reduce the risk of calving difficulty in females to which a bull is bred*
- **Carcass Merit:** *should produce calves with good post-weaning growth, ribeye area, and marbling*

Individual Bull Performance Records

<i>BW</i>	<i>Adj. WW</i>	<i>WW Ratio</i>	<i>Adj. YW</i>	<i>YW Ratio</i>	<i>Adj. IMF</i>	<i>IMF Ratio</i>	<i>Adj. REA</i>	<i>REA Ratio</i>
1	2	3	4	5	6	7	8	9

1. **Birth Weight** – Actual birth weight.
2. **Adjusted Weaning Weight** – Weaning weight adjusted to 205 days of age.
3. **Adjusted Weaning Weight Ratio** – Bull's weaning weight as compared to his contemporary group. Average = 100.
4. **Adjusted Yearling Weight** – Yearling weight adjusted to 365 days of age.
5. **Adjusted Yearling Weight Ratio** – Bull's yearling weight as compared to his contemporary group. Average = 100.
6. **Adjusted Intramuscular Fat** – Percent intramuscular fat of the ribeye adjusted to 12 months of age.
7. **Adjusted Intramuscular Fat Ratio** – Bull's adjusted percent intramuscular fat as compared to his contemporary group. Average = 100.
8. **Adjusted Ribeye Area** – Area of the ribeye in square inches adjusted to 12 months of age.
9. **Adjusted Ribeye Area Ratio** – Bull's adjusted ribeye area as compared to his contemporary group. Average = 100.

Expected Progeny Differences

Expected progeny differences are a useful genetic selection tool. They provide predictions of the expected performance of the calves sired by a bull compared to the expected performance of calves sired by other bulls of the same breed. They are calculated as part of national cattle evaluation programs and are based on the performance records of an individual animal, its relatives, and its progeny. Most breed associations publish EPDs on individual animals in sire summaries and searchable Internet databases. Breed associations also publish tables that show where individual animals rank within the breed for specific traits.

Expected progeny differences can be used to make herd genetic improvement in both commercial and seedstock operations. They should be used in conjunction with other selection criteria in a balanced approach to select herd sires with acceptable combinations of economically relevant traits that will complement cow herds and match market targets. Genetic improvement can mean increased weaning weights and growth performance, enhanced reproductive performance and better performance on the rail, all of which can enhance the profitability of a cattle operation. **Printed EPD values are accurate as of 2/14/2020.**

Accuracy Values (ACC)

Expected progeny differences come with **accuracy values (ACC)** that give an indication of the reliability of the EPDs. Accuracy values help breeders determine the level of uncertainty or risk associated with selection

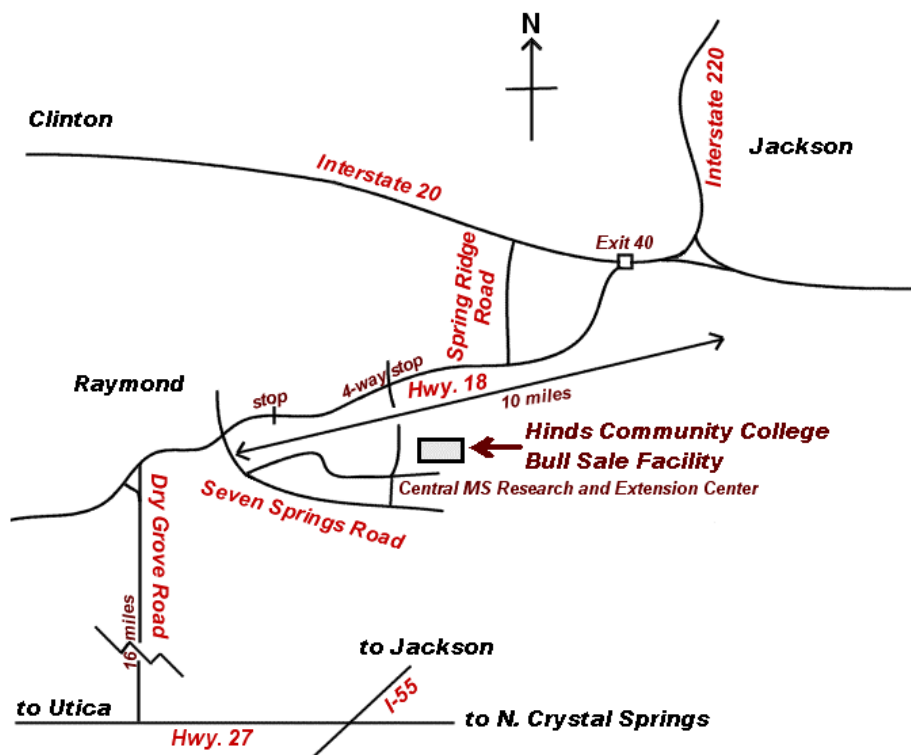
decisions. They are reported as a decimal number between zero and one. Larger values indicate greater accuracy. Remember, EPDs can be directly compared regardless of accuracy. Accuracies simply reflect risk.

Expected change tables are published by breed associations as part of national cattle evaluations to show how much variation can be expected for EPDs at specific accuracy levels. As more usable performance information becomes available for an animal and its relatives and progeny, the more accurate or reliable its EPDs become. Thus, a young, unproven bull with no calves will have lower accuracy EPDs than a proven sire with hundreds of calf records.

Spring 2020 EPD Percentile Rankings for Non-Parents

BREED	% RANKING	EPD							
		CE	Birth	Weaning	Yearling	Milk	Scrotal	Marb	REA
Angus	TOP 25%	10	0.1	62	110	28	1.15	0.74	0.71
	50%	6	1.3	55	97	25	0.76	0.51	0.54
	75%	3	2.4	47	83	22	0.37	0.32	0.38
Charolais	TOP 25%	8.2	-0.9	36.1	65.9		1.1	0.15	0.79
	50%	5.5	0.5	30.4	55.8		0.9	0.10	0.68
	75%	2.6	1.7	24.7	45.8		0.6	0.05	0.59
Hereford	Top 25%	5.8	1.6	58	94	28	1.2	0.18	0.50
	50%	2.2	3.0	52	84	24	0.9	0.08	0.37
	75%	-1.2	4.3	46	74	19	0.6	-0.01	0.22
Simmental	Top 25%	11.8	0.8	73.3	110.4	24.3		0.11	0.93
	50%	10.0	1.8	67.8	100.6	21.6		0.01	0.82
	75%	8.1	2.8	62.5	91.1	19.1		-0.06	0.72

Map to Sale Location



Please join us next fall in Raymond for the 2020 Fall BCIA Bull and Heifer Sale on Thursday, November 5, 2020.

Monogram Farms



Monogram Brilliance 2028

1

ANGUS

Hinds
Bull Test

Calved: 10/26/2018 Tattoo:2028 Reg. #: 19484197

S A V Bismarck 5682
S A V Brilliance 8077
S A V Blackcap May 5270
Monogram Focus 6024
Monogram Queen 1106
Monogram Queen 351

BW	Adj. WW	WW Ratio	Adj. YW	YW Ratio	Test WDA	WDA Ratio	Test ADG	ADG Ratio					
56	678		1195		3.24	103	5.31	106					
CED	BW	WW	YW	RADG	YH	SC	Doc	HP	CEM	Milk	MW	MH	\$EN
EPD	1	3.1	59	103					6	25			-12
ACC	0.25	0.35	0.30	0.23					0.18	0.18			
CW	Marb	RE	Fat	\$W	\$F	\$G	\$QG	\$YG	\$B				
EPD	46	.31	.69	.009	52	88	39		127				
ACC	0.27	0.23	0.26	0.23									

Monogram Farms



Monogram Renown 1718

2

ANGUS

Hinds
Bull Test

Calved: 09/22/2018 Tattoo: 1718 Reg. #: 19484154

Rito 707 of Ideal 3407 7075
S A V Renown 3439
S A V Blackcap May 4136
S A V Brilliance 8077
Monogram Elba 1385
Monogram Elba 1063

BW	Adj. WW	WW Ratio	Adj. YW	YW Ratio	Test WDA	WDA Ratio	Test ADG	ADG Ratio					
74	685		1190		3.15	100	5.27	105					
CED	BW	WW	YW	RADG	YH	SC	Doc	HP	CEM	Milk	MW	MH	\$EN
EPD	3	1.8	63	111					4	23			-11
ACC	0.25	0.36	0.31	0.23					0.20	0.20			
CW	Marb	RE	Fat	\$W	\$F	\$G	\$QG	\$YG	\$B				
EPD				57									
ACC													

Monogram Farms



Monogram 107 BN 1588

3

ANGUS

Hinds
Bull Test

Calved: 11/03/2018 Tattoo: 1588 Reg. #: 19484151

Monogram Brand Name 463
Monogram 46 BN 1076
Monogram Queen 421
Buford BlueStem 9974
Monogram Blackbird 674
Monogram Blackbird 2319

BW	Adj. WW	WW Ratio	Adj. YW	YW Ratio	Test WDA	WDA Ratio	Test ADG	ADG Ratio					
54	678		1163		3.16	100	4.91	98					
CED	BW	WW	YW	RADG	YH	SC	Doc	HP	CEM	Milk	MW	MH	\$EN
EPD	7	0.8	60	102					10	24			-18
ACC	0.15	0.33	0.28	0.16					0.08	0.10			
CW	Marb	RE	Fat	\$W	\$F	\$G	\$QG	\$YG	\$B				
EPD	45	0.36	0.48	0.030	60	91	36		127				
ACC	0.20	0.15	0.20	0.16									

Monogram Farms



Monogram 62 Renown 1068

4

ANGUS

Hinds
Bull Test

Calved: 10/19/2018 Tattoo: 1068 Reg. #: 19484132

S A V Renown 3439
Monogram Renown 626
Monogram Queen 2649
Monogram Net Worth 2819
Monogram Elba 611
Monogram Elba 269

BW	Adj. WW	WW Ratio	Adj. YW	YW Ratio	Test WDA	WDA Ratio	Test ADG	ADG Ratio						
56	678		1124		3.04	97	5.09	102						
	CED	BW	WW	YW	RADG	YH	SC	Doc	HP	CEM	Milk	MW	MH	\$EN
EPD	1-4	1+4.4	1+64	1+109				1+12		1+3	1+31			-24
ACC	0.05	0.05	0.05	0.05				0.05		0.05	0.05			
	CW	Marb	RE	Fat	\$W	\$F	\$G	\$QG	\$YG	\$B				
EPD	37	0.25	0.33	0.037	60	82	28			110				
ACC	0.19	0.15	0.19	0.15										

Fitch Brothers Charolais



FBC TABASCO 3049 P

5

CHAROLAIS

Hinds
Bull Test

Calved: 03/04/2019 Tattoo: 3049 Reg. #: M926114

LHD CIGAR E46
FBC TABASCO 9165P ET
JDJ MS DYNASTY L428
FBC PRIME CUT 2142 P
FBC MISS PRIME CUT 1134 P
FBC MISS PRIME CUT 1308 P

BW	Adj. WW	WW Ratio	Adj. YW	YW Ratio	Test WDA	WDA Ratio	Test ADG	ADG Ratio
98			1194		3.29	113	4.24	102
	CE	BW	WW	YW	Milk	MCE		
EPD	-2.8	3.6	27	50	6	3.0		
ACC	0.18	0.31	PE	PE	PE	0.08		
	TSI	SC	CWT	REA	FAT	MARB		
EPD	191.22	0.5	15	0.72	-0.005	-0.04		
ACC		PE	PE	PE	PE	PE		

Monogram Farms



Monogram Rainmaster 1948

6

ANGUS

Hinds
Bull Test

Calved: 11/12/2018 Tattoo: 1948 Reg. #: 19484192

Coleman Charlo 0256
S A V 654X Rainmaster 6849
S A V Blackcap May 4136
S A V Renown 3439
Monogram Queen 1216
Monogram Queen 2102

BW	Adj. WW	WW Ratio	Adj. YW	YW Ratio	Test WDA	WDA Ratio	Test ADG	ADG Ratio						
68	675		1159		3.14	100	4.46	89						
	CED	BW	WW	YW	RADG	YH	SC	Doc	HP	CEM	Milk	MW	MH	\$EN
EPD	4	2.2	61	107						2	24			-4
ACC	0.24	0.35	0.30	0.22						0.12	0.12			
	CW	Marb	RE	Fat	\$W	\$F	\$G	\$QG	\$YG	\$B				
EPD	33	0.11	0.70	0.014	56	68	28			96				
ACC	0.23	0.19	0.23	0.19										

Fitch Brothers Charolais



FBC FIREMAN D188P

7

CHAROLAIS

Hinds
Bull Test

Calved: 12/18/2018 Tattoo: D188 Reg. #: M926106

LHD CIGAR E46
FBC CAJUN SMOKE 1034
JD MS COMMANDER B309
KEYS 38 SPECIAL 38Y
VCR MS SPECIAL EDITION 470 P
VCR MISS MAC IV 144 P

BW	Adj. WW	WW Ratio	Adj. YW	YW Ratio	Test WDA	WDA Ratio	Test ADG	ADG Ratio
78			1052		2.86	98	4.87	117
	CE	BW	WW	YW	Milk	MCE		
EPD	1.9	2.4	37	64	12	3.6		
ACC	PE	I	PE	PE	PE	PE		
	TSI	SC	CWT	REA	FAT	MARB		
EPD	204.45	1.0	22	0.90	-0.020	-0.05		
ACC		PE	PE	PE	PE	PE		

Fitch Brothers Charolais



FBC TABASCO 2159P

8

CHAROLAIS

Hinds
Bull Test

Calved: 02/15/2019 Tattoo: 2159 Reg. #: M926113

LHD CIGAR E46
FBC TABASCO 9165P ET
JDJ MS DYNASTY L428
HC RHINESTONE 8355
FBC MISS RHINESTONE 1135P
FBC MISS WIND 1264P

BW	Adj. WW	WW Ratio	Adj. YW	YW Ratio	Test WDA	WDA Ratio	Test ADG	ADG Ratio
78			1101		3.02	104	4.06	98
	CE	BW	WW	YW	Milk	MCE		
EPD	7.2	-0.6	26	46	10	7.1		
ACC	0.19	0.31	PE	PE	PE	0.10		
	TSI	SC	CWT	REA	FAT	MARB		
EPD	191.59	0.6	12	0.68	-0.009	-0.01		
ACC		PE	PE	PE	PE	PE		

Fitch Brothers Charolais



FBC MS SMOKE 1229P

9

CHAROLAIS

Hinds
Bull Test

Calved: 01/22/2019 Tattoo: 1229 Reg. #: M926108

LHD CIGAR E46
FBC CAJUN SMOKE 1034
JD MS COMMANDER B309
VCR MR DAKOTA STYLE 55 P
FBC MISS STYLE D294P
FBC MISS WIND CUT D118 P

BW	Adj. WW	WW Ratio	Adj. YW	YW Ratio	Test WDA	WDA Ratio	Test ADG	ADG Ratio
60			1021		2.79	96	3.39	82
	CE	BW	WW	YW	Milk	MCE		
EPD	7.7	-0.5	31	49	10	7.8		
ACC	0.20	0.33	PE	PE	PE	0.09		
	TSI	SC	CWT	REA	FAT	MARB		
EPD	191.97	0.7	15	0.80	-0.013	-0.05		
ACC		PE	PE	PE	PE	PE		

Fitch Brothers Charolais



FBC SUCCESS 9118P

10

CHAROLAIS

Hinds
Bull Test

Calved: 09/11/2018 Tattoo: 9118 Reg. #: EM911280

WC BENELLI 2134 P ET
WC MILESTONE 5223 P
WC LADY BLUE 0506 P
JDJ SMOKESTER J1377 P ET
VCR BLUE SMOKE ABBY 936 ET
VCR MISS DUCHESS 357 PLD

BW	Adj. WW	WW Ratio	Adj. YW	YW Ratio	Test WDA	WDA Ratio	Test ADG	ADG Ratio
88			9118		2.33	101	4.06	101
	CE	BW	WW	YW	Milk	MCE		
EPD	1.8	2.1	38	67	19	1.9		
ACC	0.23	0.36	PE	PE	PE	0.16		
	TSI	SC	CWT	REA	FAT	MARB		
EPD	208.45	1.0	21	0.94	-0.027	-0.06		
ACC		PE	PE	PE	PE	PE		

Fitch Brothers Charolais



FBC SUCCESS 9098P

11

CHAROLAIS

Hinds
Bull Test

Calved: 09/09/2018 Tattoo: 9098 Reg. #: EM911279

WC BENELLI 2134 P ET
WC MILESTONE 5223 P
WC LADY BLUE 0506 P
JDJ SMOKESTER J1377 P ET
VCR BLUE SMOKE ABBY 936 ET
VCR MISS DUCHESS 357 PLD

BW	Adj. WW	WW Ratio	Adj. YW	YW Ratio	Test WDA	WDA Ratio	Test ADG	ADG Ratio
90			9098		2.29	100	4.11	103
	CE	BW	WW	YW	Milk	MCE		
EPD	1.8	2.1	38	67	19	1.9		
ACC	0.23	0.36	PE	PE	PE	0.16		
	TSI	SC	CWT	REA	FAT	MARB		
EPD	208.45	1.0	21	0.94	-0.027	-0.06		
ACC		PE	PE	PE	PE	PE		

Fitch Brothers Charolais



FBC SUCCESS 9088P

12

CHAROLAIS

Hinds
Bull Test

Calved: 09/08/2018 Tattoo: 9088 Reg. #: EM911278

WC BENELLI 2134 P ET
WC MILESTONE 5223 P
WC LADY BLUE 0506 P
JDJ SMOKESTER J1377 P ET
VCR BLUE SMOKE ABBY 936 ET
VCR MISS DUCHESS 357 PLD

BW	Adj. WW	WW Ratio	Adj. YW	YW Ratio	Test WDA	WDA Ratio	Test ADG	ADG Ratio
84			9088		2.28	99	3.84	96
	CE	BW	WW	YW	Milk	MCE		
EPD	4.1	1.3	38	67	19	2.7		
ACC	0.23	0.36	PE	PE	PE	0.16		
	TSI	SC	CWT	REA	FAT	MARB		
EPD	209.25	1.0	21	0.94	-0.027	-0.06		
ACC		PE	PE	PE	PE	PE		

McBride Cattle Company



MC 27Z Domino 3212A 13F

HEREFORD (Horned)

Calved: 11/18/2018 Tattoo: 13F Reg. #: 44036889

JA L1 DOMINO 8513U
 HWM JR L1 DOMINO 3212A
 JA L1 DOMINETTE 8330U
 KLONDIKE 28U 707B
 S&W 1135 VICKY 707B 27Z
 CMR 6090 VICTORIA 1135

Lot 31

BW	Adj. WW	WW Ratio	Adj. YW	YW Ratio	Adj. IMF	IMF Ratio	Adj. REA	REA Ratio				
74	637	101	1078	102								
	CED	BW	WW	YW	DMI	Sust. Cow Fert	Milk	Milk & Growth	CEM	MW	Udder	Teat
EPD	2.6	2.8	45	75	0.1	13.3	21	43	2.1	78	1.20	1.20
ACC	0.25	0.30	0.23	0.24	0.09	0.09	0.12		0.10	0.14	0.20	0.20
	CW	Marb	RE	Fat	BMI Index	BII Index	CHB Index					
EPD	60	-0.01	0.18	0.043	281	335	89					
ACC	0.03	0.03	0.03	0.03								

McBride Cattle Company



MC 3Z Domino 3212A 2G

HEREFORD (Horned)

Calved: 1/7/2019 Tattoo: 2G Reg. #: 44044068

JA L1 DOMINO 8513U
 HWM JR L1 DOMINO 3212A
 JA L1 DOMINETTE 8330U
 KJ C&L J119 LOGIC 023R ET
 CMF 023R WINONA 177U
 LJR WINONA 177U

Lot 32

BW	Adj. WW	WW Ratio	Adj. YW	YW Ratio	Adj. IMF	IMF Ratio	Adj. REA	REA Ratio				
75	611	100	1125	100								
	CED	BW	WW	YW	DMI	Sust. Cow Fert	Milk	Milk & Growth	CEM	MW	Udder	Teat
EPD	7.1	2.9	51	79	0.2	18.9	22	47	4.5	82	1.10	1.20
ACC	0.32	0.37	0.34	0.34	0.12	0.10	0.13		0.10	0.14	0.34	0.35
	CW	Marb	RE	Fat	BMI Index	BII Index	CHB Index					
EPD	61	-0.06	0.33	0.023	365	423	90					
ACC	0.10	0.10	0.10	0.10								

4 Roots Farm, LLC



4R Robb Ringo 107



CHAROLAIS

Calved: 9/14/2018 Tattoo: 107 Reg. #: M918023

M6 SLAM DUNK 3115 P ET
 CWC RINGO 606
 CWC MS BUD 352
 LT LEDGER 0332 P
 CWC WHITNEY 508
 CWC WHITNEY 220

Lot 33

BW	Adj. WW	WW Ratio	Adj. YW	YW Ratio	Adj. IMF	IMF Ratio	Adj. REA	REA Ratio
74	725	102	1090	100				
	CE	BW	WW	YW	Milk	MCE	MTL	SC
EPD	8.2	-1.2	27	55	7	7	21	1.4
ACC	0.19	0.31	0.23	1	0.11	0.09		PE
	CW	REA	FAT	MARB	TSI			
EPD	22	0.80	0.021	0.04	201.93			
ACC	PE	PE	PE	PE				

Good Cattle Company



GCC Mr Good Boy 78
 ★ Carcass Merit
CHAROLAIS

TR MR FIRE WATER 5792RET
 LJR MR GAMECHANGER 569A ET
 THOMAS MS IMPRESSIVE0641
 WCR SIR DUKE 7340 P
 DS MISS BONNIE 936 PLD
 DS MAGGIE 633 PLD

Lot 34

Calved: 12/20/2017 Tattoo: 78 Reg. #: M909080

BW	Adj. WW	WW Ratio	Adj. YW	YW Ratio	Adj. IMF	IMF Ratio	Adj. REA	REA Ratio
80	607		1033					
	CE	BW	WW	YW	Milk	MCE	MTL	SC
EPD	4.2	0.9	30	52	11	1.1	26	0.9
ACC	0.17	0.26	PE	PE	PE	0.10	PE	PE
	CW	REA	FAT	MARB	TSI			
EPD	14	0.65	0.004	0.09	196.98			
ACC	PE	PE	PE	PE				

Good Cattle Company



GCC Mr Good Boy 82
 ★ Terminal
CHAROLAIS

TR MR FIRE WATER 5792RET
 LJR MR GAMECHANGER 569A ET
 THOMAS MS IMPRESSIVE0641
 NWMSU DOC SILVER 362 PLD
 WEAVERS SILVER FOLLY 1104
 WEAVER'S HOT FOLLY 0904

Lot 35

Calved: 09/05/2018 Tattoo: 82 Reg. #: M934269

BW	Adj. WW	WW Ratio	Adj. YW	YW Ratio	Adj. IMF	IMF Ratio	Adj. REA	REA Ratio
82	580	101	1247	102				
	CE	BW	WW	YW	Milk	MCE	MTL	SC
EPD	5.1	1.3	33	63	9	5.6	26	0.9
ACC	PE	I	I	I	PE	PE	I	PE
	CW	REA	FAT	MARB	TSI			
EPD	17	0.65	0.018	0.17	209.72			
ACC	PE	PE	PE	PE				

Good Cattle Company



GCC Mr Good Boy 83
 ★ Carcass Merit
CHAROLAIS

TR MR FIRE WATER 5792RET
 LJR MR GAMECHANGER 569A ET
 THOMAS MS IMPRESSIVE0641
 M6 WYOMING WIND 4298 PLD
 WEAVERS MAMIE 1106
 M6 MS 914 MAMIE 2106 ET

Lot 36

Calved: 09/07/2018 Tattoo: 83 Reg. #: M934268

BW	Adj. WW	WW Ratio	Adj. YW	YW Ratio	Adj. IMF	IMF Ratio	Adj. REA	REA Ratio
84	575	99	1204	98				
	CE	BW	WW	YW	Milk	MCE	MTL	SC
EPD	2.8	2.6	29	53	13	4.9	27	0.9
ACC	PE	I	I	I	PE	PE	I	PE
	CW	REA	FAT	MARB	TSI			
EPD	17	0.69	-0.011	0.10	197.87			
ACC	PE	PE	PE	PE				

MBK Cattle



SIMMENTAL

Calved: 9/29/2018 Tattoo: 23F Reg. #: 3557892

W/C PALEFACE 756X
 HBOZ PALE RIDER 604A
 SSF BLK BETTY W878
 TNT AXIS X307
 HTP/SVF JADE B23
 HTP/SVF STAR OF JADE

Lot 37

BW	Adj. WW	WW Ratio	Adj. YW	YW Ratio	Adj. IMF	IMF Ratio	Adj. REA	REA Ratio
75	573	100	981	100				

	CE	BW	WW	YW	ADG	MCE	Milk	MWW	Stay	Doc
EPD	9.4	1.5	70	108.1	0.22	4.9	20.6	57.1	13.5	13.7
ACC	0.19	0.30	0.21	0.21	0.21	0.14	0.18	0.18	0.10	0.16

	CW	YG	Marb	BF	REA	Shr	API	TI
EPD	34.6	-0.34	0.13	-0.078	0.78	-0.29	123.5	74.2
ACC	0.26	0.21	0.23	0.20	0.25	0.04		