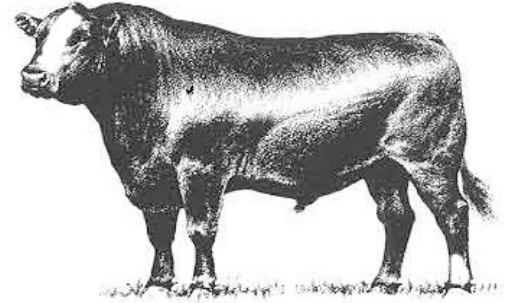


Hinds Community College Bull Test
Mississippi Beef Cattle Improvement Association

2024 Spring Bull Sale

Thursday, March 7, 2024 • 12:00 Noon
Hinds Community College
1310 Seven Springs Road, Raymond, MS



MISSISSIPPI STATE UNIVERSITY™
EXTENSION

Dear Cattle Producers:

The Hinds Community College Bull Test and Mississippi Beef Cattle Improvement Association cattle marketing partnership is a proven source for breeding cattle that build profits. In today's cattle market, the payoffs from using quality herd sires make acquiring high-quality genetics a must for producers.

We recognize that quality bulls are essential to producing profitable calf crops. Time and time again our bull buyers cite the breed leading genetics, environmental adaptability, freight, and customer service advantages of purchasing bulls raised in Mississippi. All bulls in our spring sale are screened for structure, disposition, and performance and are guaranteed as breeders. These bulls have passed breeding soundness examinations, met minimum growth and scrotal circumference requirements, and represented quality genetics.

The sale will be broadcast live from the Raymond sale site over the Extension distance education system. A link to the sale site will be available at extension.msstate.edu/beef.

The cattle will be available for viewing at the Hinds Community College Sale Facility in Raymond, MS starting on the afternoon of March 6. BCIA members, breeders, and Extension personnel will be glad to assist you in selecting breeding cattle that will work well for your operation. We look forward to seeing you at the sale on March 7.

Sincerely,

Kenny Banes

Hinds Bull Test Manager

Brandi B. Karisch

Extension Beef Cattle Specialist

Cooperative Extension Service · Mississippi State University
Box 9815 · Mississippi State, MS 39762-9815 · Office (662) 325-3516 · Fax (662) 325-8873

Mississippi State University, United States Department of Agriculture, Counties Cooperating
Mississippi State University does not discriminate on the basis of race, color, religion, national origin, sex, age, disability, or veteran status.

Consignors

- Dore Farms LLC
- G&R Farms
- MAG Angus Ranch
- Mississippi State University
- Monogram Farms
- Stephen Smith
- TPC Angus
- YNOT Ranch LLC



Consignor Contact Information

Dore Farms LLC (Charolais)

Payton Dore
7115 South Freetown Rd
New Iberia, LA 70560
337-321-1975

MAG Angus Ranch (Angus)

Marc Grabert
P.O. Box 10955
New Iberia, LA 70562
225-931-5751

Monogram Farms (Angus)

Roland Preuss
1614 Ford Road
Terry, MS 39170
601-878-5896

Stephen Smith (Commercial Brangus)

844 Don Plush Rd.
Merryville, LA 70653
337-348-3464

G&R Farms (Angus)

Gary Powell
400 Franks Rd.
Mantachie, MS 38855
662-640-1957

Mississippi State University Beef Unit (Angus & Hereford)

Alex Gardner & Brandi Karisch
Box 9815
Mississippi State, MS 39762
Alex: (662) 418-5002

TPC Angus (Angus Heifers)

David Knighton
1225 Old Yazoo City Rd.
Canton, MS 39046
601-906-2054

YNOT Ranch LLC (Gelbvieh Balancer)

334 Quitman Perry Rd.
Carriere, MS 39426
601-590-0916

Terms, Conditions, and General

TERMS: Terms of the sale are cash. Settlements are to be made with the clerk immediately after the conclusion of the auction. The Mississippi Beef Cattle Improvement Association acts as an agent only. The contract is between the buyer and seller.

BIDDING & DISPUTES: All cattle will be sold at public auction to the highest bidder. The auctioneer will settle any disputes concerning bids, and auctioneer decisions will be final. *Auctioneer: Jarvene Shackelford - American Livestock Brokers: H: (662) 837-4904 | Mobile: (662) 837-1776*

HEALTH: Health papers from licensed veterinarians accompany cattle to the sale. It is the responsibility of the buyer to know the health restrictions of his/her state and be aware of the possibility of any subsequent testing of animals purchased through this sale as required by law.

REGISTRATION: All bulls have been registered with their respective breed associations. Properly signed certificate of registry transfers will be furnished to the buyer.

BREEDING GUARANTEE: Animals are guaranteed to be without defects, but nothing more.

Bulls: All sale bulls will have documentation of a passed breeding soundness exam, including scrotal measurements within 30 days prior to sale. Scrotal circumference measurement minimums for sale bulls are 32 cm for 12–16 month old bulls, 34 cm for 17–23 month old bulls, and 36 cm for 24+ month old bulls. Bulls failing to breed after a trial of six months may be returned to the seller, if in good condition. The seller reserves the right to try said animal for six months, and if he proves to be a breeder, to return him to the buyer at the buyer's expense. If the bull proves to be a non-breeder, a satisfactory exchange will be made or purchase price refunded.

Sale Information

ANNOUNCEMENTS: Announcements made from the auction block on sale day shall take precedence over information printed in the catalog. It is therefore the buyer's responsibility to pay attention to any such announcements.

PROCESSING FOR SALE: Cattle are to be delivered to the sale location by 12:00 noon on March 6, 2024 (the day preceding the sale). Cattle will be weighed, beginning at 1:00 p.m. that day and available for viewing afterwards.

SALE ORDER: Hinds Bull Test Bulls will sell first based on an index (2 x WDA + 1 x ADG)/3. The MBCIA bulls will sell based on individual performance data, EPDs, general conformation and quality. A selection index based on the individual bull's score in the following categories will be used to rank bulls for determination of sale order (highest scoring will sell first); CE or BW EPD (max of 5 points), WW EPD (max. of 7.5 points), YW EPD (max. of 7.5 points), scrotal circumference (max. of 5 points), weight per day of age (max. of 15 points), IMF EPD (max of 5 points), REA EPD (max of 5 points), and visual appraisal (max. of 40 points). Five points will be added to a bull's selection index total if ultrasound scan results are provided.

CATTLE REMOVAL: Cattle purchased will be cared for 24 hours after the conclusion of the sale without charge. Arrangements for removal from grounds must be made at the conclusion of the 24 hours.

LIABILITY: All persons who attend this sale do so at their own risk. The owners and sponsors assume no responsibility, legal or otherwise, for any accidents that may occur.

Explanation of Performance Records

Expected Progeny Differences

Expected progeny differences are a useful genetic selection tool. They provide predictions of the expected performance of the calves sired by a bull compared to the expected performance of calves sired by other bulls of the same breed. They are calculated as part of national cattle evaluation programs and are based on the performance records of an individual animal, its relatives, and its progeny. Most breed associations publish EPDs on individual animals in sire summaries and searchable Internet databases. Breed associations also publish tables that show where individual animals rank within the breed for specific traits.

Expected progeny differences can be used to make herd genetic improvement in both commercial and seedstock operations. They should be used in conjunction with other selection criteria in a balanced approach to select herd sires with acceptable combinations of economically relevant traits that will complement cow herds and match market targets. Genetic improvement can mean increased weaning weights and growth performance, enhanced reproductive performance and better performance on the rail, all of which can enhance the profitability of a cattle operation. **Printed EPD values are accurate as of 2/15/2024.**

Accuracy Values (ACC)

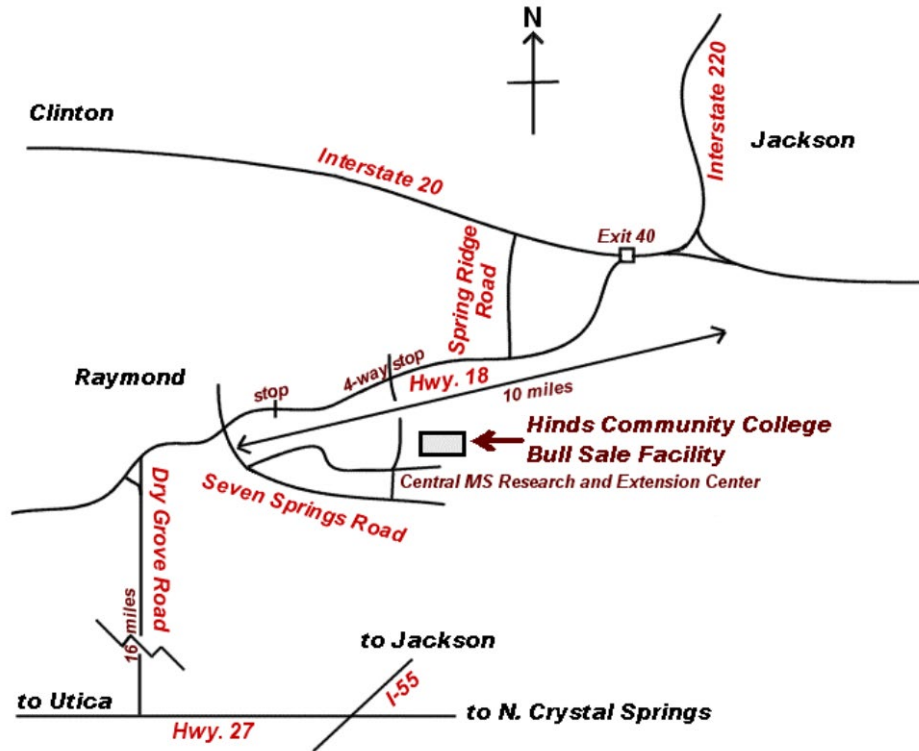
Expected progeny differences come with **accuracy values (ACC)** that give an indication of the reliability of the EPDs. Accuracy values help breeders determine the level of uncertainty or risk associated with selection decisions. They are reported as a decimal number between zero and one. Larger values indicate greater accuracy. Remember, EPDs can be directly compared regardless of accuracy. Accuracies simply reflect risk.

Expected change tables are published by breed associations as part of national cattle evaluations to show how much variation can be expected for EPDs at specific accuracy levels. As more usable performance information becomes available for an animal and its relatives and progeny, the more accurate or reliable its EPDs become. Thus, a young, unproven bull with no calves will have lower accuracy EPDs than a proven sire with hundreds of calf records.

Spring 2024 EPD Percentile Rankings for Non-Parents

BREED	% RANKING	EPD							
		CE	Birth	Weaning	Yearling	Milk	Scrotal	Marb	REA
Angus	TOP 25%	10	0.1	72	127	30	1.26	0.92	0.82
	50%	7	1.2	64	112	27	0.88	0.66	0.65
	75%	3	2.4	55	98	23	0.48	0.43	0.48
Charolais	Top 25%	13.8	-2.5	68.2	122.7	28	1.3	0.19	0.81
	50%	11.2	-1.1	61.7	111.2	24.1	1	0.13	0.7
	75%	8.4	0.2	54.9	99.6	20.4	0.8	0.06	0.59
Gelbvieh	Top 25%	15	-1.4	77	119	26	0.8	0.42	0.7
	50%	13	-0.2	71	108	23	0.6	0.29	0.56
	75%	11	0.9	65	97	20	0.4	0.18	0.43

Map to Sale Location



Please join us next fall in Raymond for the 2024 Fall BCIA Bull and Heifer Sale on Thursday, November 7, 2024.

MAG Angus Ranch



MAG 44 ENFORCER 3E14 172

4

ANGUS

*Hinds
Bull Test*

Calved: 2/14/2023 Tattoo: 3E14 Reg. #: 20728754

S S Enforcer E812
44 Enforcer 2H38
Mill Brae I Karama 7237
Connealy Capitalist 028
TT Miss Everelda Entense 172
TT Miss Everelda EntenseW225

BW	Adj. WW	WW Ratio	Adj. YW	End Test Wt	Test WDA	WDA Ratio	Test ADG	ADG Ratio						
70	710		1261	1235	3.46	105	3.88	108						
	CED	BW	WW	YW	RADG	YH	SC	Doc	HP	CEM	Milk	MW	MH	\$EN
EPD	+12	-1.7	+101	+101	+0.27	+0.5	+0.70	+11	+16.8	+13	+31	+60	+0.1	-18
ACC	0.32	0.50	0.41	0.36	0.30	0.44	0.38	0.35	0.22	0.27	0.29	0.35	0.39	
	CW	Marb	RE	Fat	\$M	\$W	\$F	\$G	\$B	\$C				
EPD	+41	+0.54	+0.94	+0.008	+60	+56	+92	+52	+144	+247				
ACC	0.39	0.36	0.35	0.31										

Monogram Farms



Monogram 115 Renown 1702

5

ANGUS

*Hinds
Bull Test*

Calved: 11/7/2022 Tattoo: 1702 Reg. #: 20835050

S A V Renown 3439
Monogram Renown 1158
Monogram Duchess 582
Monogram 212 Bismarck 41
Monogram Elba 71
Monogram Elba 100

BW	Adj. WW	WW Ratio	Adj. YW	End Test Wt	Test WDA	WDA Ratio	Test ADG	ADG Ratio						
82	767	99	1193	1470	3.22	108	3.71	91						
	CED	BW	WW	YW	RADG	YH	SC	Doc	HP	CEM	Milk	MW	MH	\$EN
EPD	+1	+1.9	+60	+106						+5	+26			-15
ACC	0.16	0.34	0.29	0.17						0.10	0.13			
	CW	Marb	RE	Fat	\$M	\$W	\$F	\$G	\$B	\$C				
EPD	I+52	I+0.28	I+0.68	I+0.022	+65	+52	+91	+34	+125	+227				
ACC	0.13	0.10	0.12	0.09										

MAG Angus Ranch



MAG 44 ENFORCER 3EN 05E1

6

ANGUS

*Hinds
Bull Test*

Calved: 1/3/2023 Tattoo: 3EN6 Reg. #: 20728763

S S Enforcer E812
44 Enforcer 2H38
Mill Brae I Karama 7237
SydGen Enhance
MAG SydGen Enhance 05E1
B&M Forever lady 515

BW	Adj. WW	WW Ratio	Adj. YW	End Test Wt.	Test WDA	WDA Ratio	Test ADG	ADG Ratio						
70	854		1244	1310	3.28	100	3.35	93						
	CED	BW	WW	YW	RADG	YH	SC	Doc	HP	CEM	Milk	MW	MH	\$EN
EPD	+11	-0.3	+58	+122	+0.30	+0.5	+0.54	+16	+10.9	+4	+39	+49	+0	-17
ACC	0.25	0.41	0.33	0.29	0.24	0.36	0.32	0.27	0.15	0.21	0.23	0.29	0.31	
	CW	Marb	RE	Fat	\$M	\$W	\$F	\$G	\$B	\$C				
EPD	+46	+1.07	+0.81	-0.001	+56	+66	+90	+78	+168	+274				
ACC	0.32	0.29	0.29	0.25										

Dore Farms LLC



PJD Weatherman 423

7

Charolais

*Hinds
Bull Test*

Calved: 1/19/2023 Tattoo: 423 Reg. #: M986273

TR CAG CARBON COPY 7630E ET
TR C&S MR CARBON COPY 946
C&S SMOKIE JOE 915
TR MR ORIENT 0620X
TMD MS ORIENT 316
TR MS TURTON 2554Z

BW	Adj. WW	WW Ratio	Adj. YW	End Test Wt	Test WDA	WDA Ratio	Test ADG	ADG Ratio
68			1104	1155	3.02	101	3.48	88
	CE	BW	WW	YW	Milk	MCE		
EPD	+11.4	-1.6	+56	+105	+18	+9.9		
ACC	PE	PE	PE	PE	PE	PE		
	TSI	SC	CW	REA	FAT	MARB		
EPD	245.59		+19	+0.70	+0.023	-0.02		
ACC			PE	PE	PE	PE		

MAG Angus Ranch



MAG 44 ENFORCER 3E11 709

8

ANGUS

*Hinds
Bull Test*

Calved: 2/6/2023 Tattoo: 3E11 Reg. #: 20728753

S S Enforcer E812
44 Enforcer 2H38
Mill Brae I Karama 7237
Connealy Confidence Plus
DCF Forever Lady 709
B&M Forever lady 515

BW	Adj. WW	WW Ratio	Adj. YW	End Test Wt	Test WDA	WDA Ratio	Test ADG	ADG Ratio						
70	634		1090	1090	2.99	91	3.53	98						
	CED	BW	WW	YW	RADG	YH	SC	Doc	HP	CEM	Milk	MW	MH	\$EN
EPD	+7	+1.3	+70	+133	+0.33	+1.0	-0.08	+17	+13.8	+10	+39	+86	+0.7	-35
ACC	0.30	0.48	0.39	0.34	0.29	0.42	0.37	0.32	0.20	0.26	0.28	0.34	0.37	
	CW	Marb	RE	Fat	\$M	\$W	\$F	\$G	\$B	\$C				
EPD	+68	+1.01	+1.18	+0.019	+58	+72	+118	+78	+196	+312				
ACC	0.38	0.34	0.34	0.30										

Stephen Smith



Brangus Bull Tag 117

9

COMMERCIAL BRANGUS

*Hinds
Bull Test*

Calved: 1/18/2023 Tattoo: 117 Non-registered

BWCC SLICK 7B
BWCC SLICK 192D36
BWCC MS TANK 192W20
Commercial Brangus

BW	Adj. WW	WW Ratio	Adj. YW	End Test Wt	Test WDA	WDA Ratio	Test ADG	ADG Ratio
75			1194	1240	3.23	98	4.55	116

Verell Farms



Brangus Bull Tag 5

BWCC SLICK 7B
BWCC SLICK 192D36
BWCC MS TANK 192W20

10

COMMERCIAL BRANGUS

Commercial Brangus

*Hinds
Bull Test*

Calved: 1/16/2023 Tattoo: 5 Non-registered

BW	Adj. WW	WW Ratio	Adj. YW	End Test Wt	Test WDA	WDA Ratio	Test ADG	ADG Ratio
75			1224	1290	3.34	102	3.88	99

Verell Farms



Brangus Bull Tag 180

BWCC SLICK 7B
BWCC SLICK 192D36
BWCC MS TANK 192W20

11

COMMERCIAL BRANGUS

Commercial Brangus

*Hinds
Bull Test*

Calved: 2/9/2023 Tattoo: 180 Non-registered

BW	Adj. WW	WW Ratio	Adj. YW	End Test Wt	Test WDA	WDA Ratio	Test ADG	ADG Ratio
75			1194	1185	3.27	100	3.35	85

YNOT Ranch LLC



YNOT-3922B-New Year

MDR FIRST STEP 7549E
MDR FIRST ROUND PICK 9824G ET
DOBSON EMPRESS 301A
JRI BOTTOM LINE 254A220
KOH W406D
KOH 199W

Lot 12

GELBVIEW BALANCER

Calved: 1/1/2022 Tattoo: YNOT 39K Reg. #: 1545567

BW	Adj. WW	WW Ratio	Adj. YW	YW Ratio	Adj. IMF	IMF Ratio	Adj. REA	REA Ratio
42	702	95	845	93				

	CED	BW	WW	YW	Milk	TM	CEM	HP	PG30
EPD	+13	-0.5	+64	+103	+15	+48	+6	+5.64	-1.68
ACC	0.17	0.23	0.26	0.27	0.12		0.13	0.12	0.01

	STAY	DOC	SC	YG	CW	CREA	MARB	CFAT	FPI
EPD	+14	+14	+0.10	+0.03	+34	+0.27	+0.39	+0.01	76.61
ACC	0.11	0.15	0.15	0.12	0.16	0.15	0.12	0.11	

YNOT Ranch LLC



YNOT-4122B

MDR FIRST STEP 7549E
MDR FIRST ROUND PICK 9824G ET
DOBSON EMPRESS 301A
JRI IRON MAN 207Y811
KOH W575C
DCSF POST ROCK BLK BIRD 137S1

Lot 13

GELBVIEW BALANCER

Calved: 1/17/2022 Tattoo: YNOT 41K Reg. #: 1545564

BW	Adj. WW	WW Ratio	Adj. YW	YW Ratio	Adj. IMF	IMF Ratio	Adj. REA	REA Ratio
52	843	116	1015	112				

	CED	BW	WW	YW	Milk	TM	CEM	HP	PG30
EPD	+12	+1.5	+78	+119	+20	+59	+6	+4.18	-1.40
ACC	0.20	0.38	0.32	0.36	0.22		0.14	0.13	0.01

	STAY	DOC	SC	YG	CW	CREA	MARB	CFAT	FPI
EPD	+13	+11	+0.53	-0.13	+36	+0.58	+0.19	-0.02	78.02
ACC	0.11	0.16	0.14	0.13	0.19	0.16	0.12	0.11	

YNOT Ranch LLC



YNOT-4522B

MDR FIRST STEP 7549E
MDR FIRST ROUND PICK 9824G ET
DOBSON EMPRESS 301A
TOG TWIN OAK SARGE 261X
KOH W504B
LRC 236S

Lot 14

GELBVIEW BALANCER

Calved: 1/12/2022 Tattoo: YNOT 45K Reg. #: 1545566

BW	Adj. WW	WW Ratio	Adj. YW	YW Ratio	Adj. IMF	IMF Ratio	Adj. REA	REA Ratio
44	725	98	918	101				

	CED	BW	WW	YW	Milk	TM	CEM	HP	PG30
EPD	+12	0.0	+67	+106	+15	+50	+6	+6.31	+1.32
ACC	0.18	0.31	0.26	0.28	0.18		0.12	0.13	0.06

	STAY	DOC	SC	YG	CW	CREA	MARB	CFAT	FPI
EPD	+15	+11	+0.25	-0.16	+28	+0.52	+0.25	-0.03	74.90
ACC	0.11	0.15	0.17	0.12	0.18	0.15	0.10	0.09	

YNOT Ranch LLC



YNOT- 4622B

GELBVIEW BALANCER

Calved: 1/19/2022 Tattoo: YNOT 46K Reg. #: 1545563

MDR FIRST STEP 7549E
MDR FIRST ROUND PICK 9824G ET
DOBSON EMPRESS 301A
JRI MULTITOOOL 706A22
KOH W517E
KOH W254B

Lot 15

BW	Adj. WW	WW Ratio	Adj. YW	YW Ratio	Adj. IMF	IMF Ratio	Adj. REA	REA Ratio
44	678	92	844	93				

	CED	BW	WW	YW	Milk	TM	CEM	HP	PG30
EPD	+13	-0.3	+62	+103	+12	44	+6	+3.98	+1.38
ACC	0.19	0.30	0.36	0.33	0.18		0.14	0.06	0.01

	STAY	DOC	SC	YG	CW	CREA	MARB	CFAT	FPI
EPD	+13	+14	+0.10	-0.02	+29	+0.27	+0.32	-0.01	73.64
ACC	0.11	0.16	0.14	0.13	0.18	0.15	0.12	0.11	

YNOT Ranch LLC



YNOT-4822B

GELBVIEW BALANCER

Calved: 1/26/2022 Tattoo: YNOT 48K Reg. #: 1545568

MDR FIRST STEP 7549E
MDR FIRST ROUND PICK 9824G ET
DOBSON EMPRESS 301A
VRT LAZY TV WATCHMAN W021
KOH W176D
KOH W174B

Lot 16

BW	Adj. WW	WW Ratio	Adj. YW	YW Ratio	Adj. IMF	IMF Ratio	Adj. REA	REA Ratio
45	742	101	904	100				

	CED	BW	WW	YW	Milk	TM	CEM	HP	PG30
EPD	+13	-0.5	+67	+102	+18	+52	+6	+6.59	+1.56
ACC	0.19	0.30	0.32	0.32	0.23		0.14	0.12	0.01

	STAY	DOC	SC	YG	CW	CREA	MARB	CFAT	FPI
EPD	+11	+14	+0.12	-0.03	+32	+0.36	+0.48	0.00	80.93
ACC	0.12	0.16	0.14	0.13	0.18	0.15	0.12	0.11	

YNOT Ranch LLC



YNOT-5122B

GELBVIEW BALANCER

Calved: 2/10/2022 Tattoo: YNOT 51K Reg. #: 1557336

MDR FIRST STEP 7549E
MDR FIRST ROUND PICK 9824G ET
DOBSON EMPRESS 301A
MDR GALLAGHER RULE 3020A
MDR ELIZABETH 718E
DOBSON MISS BLACKCAP 248Z

Lot 17

BW	Adj. WW	WW Ratio	Adj. YW	YW Ratio	Adj. IMF	IMF Ratio	Adj. REA	REA Ratio
42	556	96	686	86				

	CED	BW	WW	YW	Milk	TM	CEM	HP	PG30
EPD	+12	+0.8	+70	+111	+17	54	+6	+4.42	-0.74
ACC	0.18	0.31	0.31	0.28	0.17		0.12	0.12	0.01

	STAY	DOC	SC	YG	CW	CREA	MARB	CFAT	FPI
EPD	+11	+12	+0.30	-0.01	+34	+0.35	+0.35	0.00	77.47
ACC	0.10	0.17	0.13	0.13	0.19	0.15	0.12	0.10	

YNOT Ranch LLC



YNOT-5322B

GELBVIEW BALANCER

Calved: 2/12/2022 Tattoo: YNOT 53K Reg. #: 1557338

MDR FIRST STEP 7549E
MDR FIRST ROUND PICK 9824G
DOBSON EMPRESS 301A
BABR SECRET BRAND 2011Z ET
BABR 9406G
BABR 6281D

Lot 18

BW	Adj. WW	WW Ratio	Adj. YW	YW Ratio	Adj. IMF	IMF Ratio	Adj. REA	REA Ratio
41	705	122	820	103				

	CED	BW	WW	YW	Milk	TM	CEM	HP	PG30
EPD	+10	+1.7	+83	+125	+19	61	+5	+5.46	-1.17
ACC	0.18	0.31	0.37	0.38	0.29		0.12	0.06	0.01

	STAY	DOC	SC	YG	CW	CREA	MARB	CFAT	FPI
EPD	+11	+10	+0.01	+0.01	+42	+0.37	+0.37	0.00	83.49
ACC	0.11	0.16	0.13	0.13	0.17	0.15	0.12	0.11	

YNOT Ranch LLC



YNOT- 5422B

GELBVIEW BALANCER

Calved: 2/12/2022 Tattoo: YNOT 54K Reg. #: 1557339

MDR FIRST STEP 7549E
MDR FIRST ROUND PICK 9824G ET
DOBSON EMPRESS 301A
KOH Y21D
KOH W750H
KOH W767E

Lot 19

BW	Adj. WW	WW Ratio	Adj. YW	YW Ratio	Adj. IMF	IMF Ratio	Adj. REA	REA Ratio
41	663	115	891	112				

	CED	BW	WW	YW	Milk	TM	CEM	HP	PG30
EPD	+13	+0.8	+79	+126	+22	+62	+6	+7.89	+1.44
ACC	0.20	0.31	0.27	0.27	0.26		0.14	0.06	0.01

	STAY	DOC	SC	YG	CW	CREA	MARB	CFAT	FPI
EPD	+12	+12	+0.38	-0.07	+38	+0.49	+0.29	-0.01	82.75
ACC	0.09	0.15	0.13	0.12	0.18	0.14	0.10	0.09	

G&R Farms



G280 RAIN MAN

ANGUS

Calved: 8/23/2022 Tattoo: G280 Reg. #: 20852531

MARCYS SCALE CRUSHER
S A V EASE 0840
S A V BLACKCAP MAY 1416
TEHAMA PATRIARCH F028
GR54 RITA
GR45 BOTTOM LINE

Lot 20

BW	Adj. WW	WW Ratio	Adj. YW	YW Ratio	Adj. IMF	IMF Ratio	Adj. REA	REA Ratio
75	600	95	1096	100				

	CED	BW	WW	YW	RADG	DMI	YH	SC	HP	CEM	Milk	MW	MH	\$EN
EPD	+9	+1.6	+69	+117	+0.23	+1.40	+0.4	+1.35	+12.2	+11	+25	+46	+0.3	-7
ACC	0.37	0.55	0.47	0.42	0.31	0.31	0.44	0.39	0.21	0.28	0.30	0.36	0.39	

	CW	Marb	RE	Fat	\$M	\$W	\$F	\$G	\$B	\$C
EPD	+49	+0.38	+0.58	+0.01	83	68	86	38	124	244
ACC	0.40	0.35	0.35	0.31						

G&R Farms



G274 POWELLS CRUSHER

ANGUS

Lot 21

Calved: 9/30/2022 Tattoo: G274 Reg. #: 20852791

MARCYS SCALE CRUSHER
S A V SCALE HOUSE 0845
S A V BLACKCAP MAY 1416
CONNEALY COMMONWEALTH
ELIZABETH QUEEN GR62
SSP HESTER 8066 N214

BW	Adj. WW	WW Ratio	Adj. YW	YW Ratio	Adj. IMF	IMF Ratio	Adj. REA	REA Ratio						
78	650	105	1064	97										
CED	BW	WW	YW	RADG	DMI	YH	SC	HP	CEM	Milk	MW	MH	\$EN	
EPD	+7	+1.7	+62	+107	+0.23	+0.72	+0.3	+0.94	+7.1	+9	+15	+54	+0.1	-6
ACC	0.34	0.55	0.47	0.42	0.32	0.32	0.46	0.40	0.22	0.27	0.30	0.36	0.39	
CW	Marb	RE	Fat	\$M	\$W	\$F	\$G	\$B	\$C					
EPD	+45	+0.47	+0.65	-0.015	54	50	89	46	135	229				
ACC	0.40	0.36	0.35	0.31										

G&R Farms



G284 POWELLS MARGYS

ANGUS

Lot 22

Calved: 9/30/2022 Tattoo: G284 Reg. #: 20852788

MARCYS SCALE CRUSHER
S A V SCALE HOUSE 0845
S A V BLACKCAP MAY 1416
ZWT SUMMITT 6507
SHERROD LADY PRIDE GR64
G-52 RUBY

BW	Adj. WW	WW Ratio	Adj. YW	YW Ratio	Adj. IMF	IMF Ratio	Adj. REA	REA Ratio						
80	625	101	1142	104										
CED	BW	WW	YW	RADG	DMI	YH	SC	HP	CEM	Milk	MW	MH	\$EN	
EPD	+2	+2.2	+75	+137	+0.28	+1.69	+0.6	+0.71	+8.2	+9	+23	+90	+0.6	-29
ACC	0.33	0.53	0.46	0.41	0.30	0.30	0.44	0.38	0.20	0.25	0.28	0.35	0.38	
CW	Marb	RE	Fat	\$M	\$W	\$F	\$G	\$B	\$C					
EPD	+74	+0.12	+0.88	-0.015	60	62	124	31	155	261				
ACC	0.39	0.34	0.34	0.29										

Mississippi State University



MSU GROWTH FUND K129

ANGUS

Lot 23

Calved: 9/11/2022 Tattoo: K129 Reg. #: 20724163

BASIN PAYWEIGHT 1682
DEER VALLEY GROWTH FUND
DEER VALLEY RITA 36113
44 TOTAL IMPACT 2T29
TPC MISS IMPACT 2T29
SCAR 9D15 BY JILT 524 PRED

BW	Adj. WW	WW Ratio	Adj. YW	YW Ratio	Adj. IMF	IMF Ratio	Adj. REA	REA Ratio					
89	630	100	1068	100	3.48	110	10.5	104					
CED	BW	WW	YW	RADG	DMI	YH	SC	HP	CEM	Milk	MW	MH	\$EN
EPD	I+9	I+1.3	I+71	I+133					I+14	I+25	I+87	I+0.7	-28
ACC	0.05	0.05	0.05	0.05					0.05	0.05	0.05	0.05	
CW	Marb	RE	Fat	\$M	\$W	\$F	\$G	\$B	\$C				
EPD	+82	+0.83	+0.74	+0.021	61	63	124	63	186	302			
ACC	0.25	0.22	0.25	0.22									

TPC Angus



Lot 25

TPC EMBER Z462

AI to G A R Grass Roots on 11/2/23
 Ultrasound safe with a bull calf 2/8/24
 Breed: BRED ANGUS HEIFER
 Calved: 10/13/2022
 Tattoo: Z462
 Reg. #: 20485374

G A R SURE FIRE
 TPC EMBER Z60
 G A R EARLY BIRD N915
 SYDGEN ENHANCE
 TPC MISS ENHANCE 0813
 G A R PROPHET C4

	CED	BW	WW	YW	RADG	CEM	Milk	MW	MH	Doc
EPD	+12	-0.5	+69	+126	+0.28	+9	+25	+65	+0.6	+23
ACC	0.32	0.53	0.44	0.39	0.32	0.27	0.29	0.37	0.40	0.33
	CW	Marb	RE	FAT	\$M	\$W	\$F	\$G	\$B	\$C
EPD	+50	+1.57	+0.72	+0.001	59	67	95	102	197	315
ACC	0.41	0.36	0.36	0.32						

TPC Angus



Lot 26

TPC ELEMENT Z542

AI to G A R Dual Force on 12/11/23
 Ultrasound safe with a heifer calf 2/8/24
 Breed: BRED ANGUS HEIFER
 Calved: 11/9/2022
 Tattoo: Z542
 Reg. #: 20526109

G A R SURE FIRE
 G A R ELEMENT 6018S
 G A R SUNRISE 2785
 G A R REVAMP N5656
 TPC MISS REVAMP 913
 TPC MISS DENVER 503

	CED	BW	WW	YW	RADG	CEM	Milk	MW	MH	Doc
EPD	+5	+3.6	+59	+101	+0.2	+7	+32	+50	+0.4	+29
ACC	0.32	0.52	0.43	0.38	0.29	0.26	0.28	0.34	0.37	0.32
	CW	Marb	RE	FAT	\$M	\$W	\$F	\$G	\$B	\$C
EPD	+52	+1.25	+0.8	-0.004	64	57	95	87	182	300
ACC	0.39	0.34	0.34	0.30						

TPC Angus



Lot 27

TPC ELEMENT Z672

AI to GB Fireball 672 on 12/17/23
 Ultrasound safe in calf 2/8/24
 Breed: BRED ANGUS HEIFER
 Calved: 12/20/2022
 Tattoo: Z672
 Reg. #: 20594236

G A R SURE FIRE
 G A R ELEMENT 6018S
 G A R SUNRISE 2785
 G A R REVAMP N5656
 TPC MISS REVAMP 914
 TPC 601 SCAR 2561 100X

	CED	BW	WW	YW	RADG	CEM	Milk	MW	MH	Doc
EPD	+10	+0.5	+65	+121	+0.28	+13	+31	+90	+1.1	+30
ACC	0.32	0.51	0.42	0.34	0.28	0.25	0.27	0.33	0.36	0.31
	CW	Marb	RE	FAT	\$M	\$W	\$F	\$G	\$B	\$C
EPD	+58	+1.24	+0.64	-0.009	46	63	107	85	191	294
ACC	0.37	0.33	0.33	0.29						

TPC Angus



Lot 28

TPC CRONUS Z612

AI to G A R Transcendent on 1/31/24

Breed: BRED ANGUS HEIFER

Calved: 11/25/2022

Tattoo: Z612

Reg. #: 20526116

GARDENS CACHE
G A R CRONUS 5108S
G A R PROPHET 374
G A R ELEMENT 6018S
TPC ELEMENT 020
G A R ASHLAND 1058

	CED	BW	WW	YW	RADG	CEM	Milk	MW	MH	Doc
EPD	+12	0.0	+69	+128	0.26	+13	+33	+88	+0.7	+23
ACC	0.31	0.53	0.43	0.35	0.30	0.26	0.28	0.35	0.38	0.33

	CW	Marb	RE	FAT	\$M	\$W	\$F	\$G	\$B	\$C
EPD	+61	+0.8	+0.86	+0.034	56	69	104	62	165	270
ACC	0.39	0.35	0.34	0.30						

TPC Angus



Lot 29

TPC DUAL THREAT Z23

Breed: OPEN ANGUS HEIFER

Calved: 2/13/2023

Tattoo: Z23

Reg. #: 20601690

G A R SURE FIRE
G A R DUAL THREAT
G A R DAYBREAK A3010
G A R PRODIGY
GOODE PRODIGY 9501
GG EARLINDA 6435

	CED	BW	WW	YW	RADG	CEM	Milk	MW	MH	Doc
EPD	+15	-0.4	+65	+122	+0.29	+11	+31	+82	+1	+23
ACC	0.34	0.51	0.43	0.36	0.30	0.28	0.27	0.34	0.36	0.34

	CW	Marb	RE	FAT	\$M	\$W	\$F	\$G	\$B	\$C
EPD	+55	+1.39	+1.1	-0.01	61	64	105	99	203	324
ACC	0.41	0.37	0.36	0.32						

TPC Angus



Lot 30

TPC CRONUS Z492

Breed: OPEN COMMERCIAL ANGUS HEIFER

Calved: 10/25/2022

Tattoo: Z492

GARDENS CACHE
G A R CRONUS 5108S
G A R PROPHET 374
G A R ELEMENT 6018S
TPC MISS ELEMENT 030
TPC MISS SUNRISE 804

	CED	BW	WW	YW	RADG	CEM	Milk	MW	MH	Doc
EPD	+13	+0.3	+67	+118	+0.23	+12	+39	+34	+0.1	+30
ACC	0.31	0.52	0.43	0.38	0.29	0.24	0.26	0.34	0.37	0.32

	CW	Marb	RE	FAT	\$M	\$W	\$F	\$G	\$B	\$C
EPD	+58	+1.61	+0.84	+0.027	99	79	96	103	199	357
ACC	0.38	0.33	0.33	0.29						