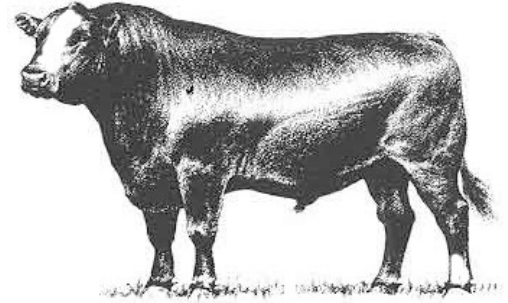


Hinds Community College Bull Test
Mississippi Beef Cattle Improvement Association
2023 Spring Bull Sale

Thursday, March 2, 2023 • 12:00 Noon
Hinds Community College
1310 Seven Springs Road, Raymond, MS



**MISSISSIPPI STATE UNIVERSITY™
EXTENSION**

Dear Cattle Producers:

The Hinds Community College Bull Test and Mississippi Beef Cattle Improvement Association cattle marketing partnership is a proven source for breeding cattle that build profits. In today's cattle market, the payoffs from using quality herd sires make acquiring high-quality genetics a must for producers.

We recognize that quality bulls are essential to producing profitable calf crops. Time and time again our bull buyers cite the breed leading genetics, environmental adaptability, freight, and customer service advantages of purchasing bulls raised in Mississippi. All bulls in our spring sale are screened for structure, disposition, and performance and are guaranteed as breeders. These bulls have passed breeding soundness examinations, met minimum growth and scrotal circumference requirements, and represented quality genetics.

The sale will be broadcast live from the Raymond sale site over the Extension distance education system. A link to the sale site will be available at extension.msstate.edu/beef.

The cattle will be available for viewing at the Hinds Community College Sale Facility in Raymond, MS starting on the afternoon of March 1. BCIA members, breeders, and Extension personnel will be glad to assist you in selecting breeding cattle that will work well for your operation. We look forward to seeing you at the sale on March 2.

Sincerely,

Kenny Banes

Hinds Bull Test Manager

Brandi B. Karisch

Extension Beef Cattle Specialist

Cooperative Extension Service · Mississippi State University
Box 9815 · Mississippi State, MS 39762-9815 · Office (662) 325-3516 · Fax (662) 325-8873

Mississippi State University, United States Department of Agriculture, Counties Cooperating
Mississippi State University does not discriminate on the basis of race, color, religion, national origin, sex, age, disability, or veteran status.

Consignors

- Blossom Hill Farm
- Monogram Farms
- Moonshine Angus Ranch
- Verell Farms
- MBK Cattle
- McBride Cattle Company
- Mississippi State University



Consignor Contact Information

Blossom Hill Farm (SimAngus)

Sammy Blossom
2147 Joe Hall Road
Flora, MS 39071
601-941-1276

Monogram Farms (Angus)

Roland Preuss
1614 Ford Road
Terry, MS 39170
601-878-5896

Moonshine Angus Ranch (Angus)

Ray Gendron
434 Pastureview Dr.
Baton Rouge, LA 70810
225-931-5751

Verell Farms (Balancer)

Tyler Gregory
1203 Crisler Rd.
Terry, MS 39170
601-622-8581

MBK Cattle (Simmental & SimAngus)

Matt & Brandi Karisch
648 Polly Bell Rd.
Starkville, MS 39759
Matt: (979) 249-6172
Brandi: (225) 717-3324
mbkcattle@gmail.com

McBride Cattle Company (Hereford)

Warner McBride
7697 Eureka Rd
Courtland, MS 38620
Warner: (662) 578-1373
warnermcbride@gmail.com

Mississippi State University Beef Unit (Angus & Hereford)

Alex Gardner & Brandi Karisch
Box 9815
Mississippi State, MS 39762
Alex: (662) 418-5002
Brandi: (662) 325-7465

Terms, Conditions, and General

TERMS: Terms of the sale are cash. Settlements are to be made with the clerk immediately after the conclusion of the auction. The Mississippi Beef Cattle Improvement Association acts as an agent only. The contract is between the buyer and seller.

BIDDING & DISPUTES: All cattle will be sold at public auction to the highest bidder. The auctioneer will settle any disputes concerning bids, and auctioneer decisions will be final. *Auctioneer: Jarvene Shackelford - American Livestock Brokers: H: (662) 837-4904 | Mobile: (662) 837-1776*

HEALTH: Health papers from licensed veterinarians accompany cattle to the sale. It is the responsibility of the buyer to know the health restrictions of his/her state and be aware of the possibility of any subsequent testing of animals purchased through this sale as required by law.

REGISTRATION: All bulls have been registered with their respective breed associations. Properly signed certificate of registry transfers will be furnished to the buyer.

BREEDING GUARANTEE: Animals are guaranteed to be without defects, but nothing more.

Bulls: All sale bulls will have documentation of a passed breeding soundness exam, including scrotal measurements within 30 days prior to sale. Scrotal circumference measurement minimums for sale bulls are 32 cm for 12–16 month old bulls, 34 cm for 17–23 month old bulls, and 36 cm for 24+ month old bulls. Bulls failing to breed after a trial of six months may be returned to the seller, if in good condition. The seller reserves the right to try said animal for six months, and if he proves to be a breeder, to return him to the buyer at the buyer's expense. If the bull proves to be a non-breeder, a satisfactory exchange will be made or purchase price refunded.

Sale Information

ANNOUNCEMENTS: Announcements made from the auction block on sale day shall take precedence over information printed in the catalog. It is therefore the buyer's responsibility to pay attention to any such announcements.

PROCESSING FOR SALE: Cattle are to be delivered to the sale location by 12:00 noon on March 1, 2023 (the day preceding the sale). Cattle will be weighed, beginning at 1:00 p.m. that day and available for viewing afterwards.

SALE ORDER: Hinds Bull Test Bulls will sell first based on an index (2 x WDA + 1 x ADG)/3. The MBCIA bulls will sell based on individual performance data, EPDs, general conformation and quality. A selection index based on the individual bull's score in the following categories will be used to rank bulls for determination of sale order (highest scoring will sell first); CE or BW EPD (max of 5 points), WW EPD (max. of 7.5 points), YW EPD (max. of 7.5 points), scrotal circumference (max. of 5 points), weight per day of age (max. of 15 points), IMF EPD (max of 5 points), REA EPD (max of 5 points), and visual appraisal (max. of 40 points). Five points will be added to a bull's selection index total if ultrasound scan results are provided.

CATTLE REMOVAL: Cattle purchased will be cared for 24 hours after the conclusion of the sale without charge. Arrangements for removal from grounds must be made at the conclusion of the 24 hours.

LIABILITY: All persons who attend this sale do so at their own risk. The owners and sponsors assume no responsibility, legal or otherwise, for any accidents that may occur.

Explanation of Performance Records

Bull Designations

Bulls meeting certain expected progeny difference (EPD) requirements are noted with one or more of the following designations:

- **Balanced Trait:** *should provide moderation for calving ease, growth, and milking ability*
- **Terminal:** *should produce calves with exceptional growth performance*
- **Calving Ease:** *should reduce the risk of calving difficulty in females to which a bull is bred*
- **Carcass Merit:** *should produce calves with good post-weaning growth, ribeye area, and marbling*

Individual Bull Performance Records

<i>BW</i>	<i>Adj. WW</i>	<i>WW Ratio</i>	<i>Adj. YW</i>	<i>YW Ratio</i>	<i>Adj. IMF</i>	<i>IMF Ratio</i>	<i>Adj. REA</i>	<i>REA Ratio</i>
1	2	3	4	5	6	7	8	9

1. **Birth Weight** – Actual birth weight.
2. **Adjusted Weaning Weight** – Weaning weight adjusted to 205 days of age.
3. **Adjusted Weaning Weight Ratio** – Bull’s weaning weight as compared to his contemporary group. Average = 100.
4. **Adjusted Yearling Weight** – Yearling weight adjusted to 365 days of age.
5. **Adjusted Yearling Weight Ratio** – Bull’s yearling weight as compared to his contemporary group. Average = 100.
6. **Adjusted Intramuscular Fat** – Percent intramuscular fat of the ribeye adjusted to 12 months of age.
7. **Adjusted Intramuscular Fat Ratio** – Bull’s adjusted percent intramuscular fat as compared to his contemporary group. Average = 100.
8. **Adjusted Ribeye Area** – Area of the ribeye in square inches adjusted to 12 months of age.
9. **Adjusted Ribeye Area Ratio** – Bull’s adjusted ribeye area as compared to his contemporary group. Average = 100.

Expected Progeny Differences

Expected progeny differences are a useful genetic selection tool. They provide predictions of the expected performance of the calves sired by a bull compared to the expected performance of calves sired by other bulls of the same breed. They are calculated as part of national cattle evaluation programs and are based on the performance records of an individual animal, its relatives, and its progeny. Most breed associations publish EPDs on individual animals in sire summaries and searchable Internet databases. Breed associations also publish tables that show where individual animals rank within the breed for specific traits.

Expected progeny differences can be used to make herd genetic improvement in both commercial and seedstock operations. They should be used in conjunction with other selection criteria in a balanced approach to select herd sires with acceptable combinations of economically relevant traits that will complement cow herds and match market targets. Genetic improvement can mean increased weaning weights and growth performance, enhanced reproductive performance and better performance on the rail, all of which can enhance the profitability of a cattle operation. **Printed EPD values are accurate as of 2/15/2023.**

Accuracy Values (ACC)

Expected progeny differences come with **accuracy values (ACC)** that give an indication of the reliability of the EPDs. Accuracy values help breeders determine the level of uncertainty or risk associated with selection

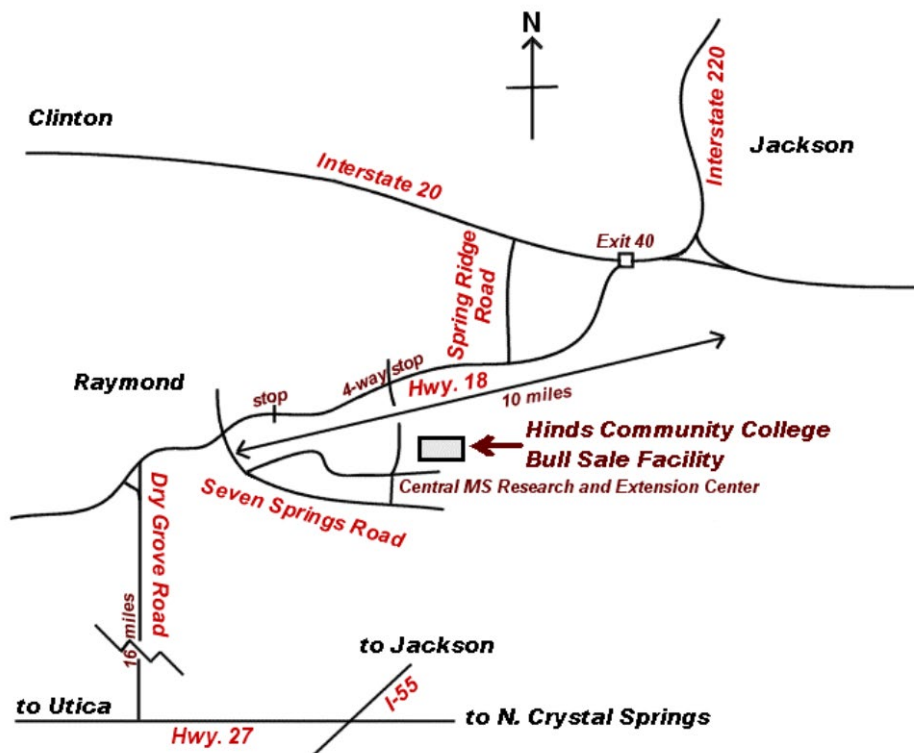
decisions. They are reported as a decimal number between zero and one. Larger values indicate greater accuracy. Remember, EPDs can be directly compared regardless of accuracy. Accuracies simply reflect risk.

Expected change tables are published by breed associations as part of national cattle evaluations to show how much variation can be expected for EPDs at specific accuracy levels. As more usable performance information becomes available for an animal and its relatives and progeny, the more accurate or reliable its EPDs become. Thus, a young, unproven bull with no calves will have lower accuracy EPDs than a proven sire with hundreds of calf records.

Spring 2023 EPD Percentile Rankings for Non-Parents

BREED	% RANKING	EPD							
		CE	Birth	Weaning	Yearling	Milk	Scrotal	Marb	REA
Angus	TOP 25%	10	0.1	70	124	30	1.26	0.85	0.79
	50%	7	1.2	61	109	26	0.86	0.61	0.62
	75%	4	3	53	94	23	0.47	0.38	0.38
Hereford	Top 25%	5.6	1.7	60	97	30	1.2	0.18	0.53
	50%	2.7	2.8	55	88	26	1.0	0.10	0.41
	75%	-1.2	3.9	49	79	22	0.8	0.03	0.30
Simmental	Top 25%	12.8	0.2	85.2	128.9	26.0		0.26	0.99
	50%	11.0	1.5	78.2	116.4	23.5		0.13	0.88
	75%	9.1	2.7	72.0	105.3	20.5		0.03	0.77
SimAngus	Top 25%	14.4	-1.1	83.7	130.6	25.9		0.48	0.81
	50%	12.4	0.3	76.3	117.7	23.0		0.32	0.67
	25%	10.4	1.6	69.5	105.7	20.3		0.19	0.53

Map to Sale Location



Please join us next fall in Raymond for the 2023 Fall BCIA Bull and Heifer Sale on Thursday, November 2, 2023.

Monogram Farms



MONOGRAM 127 RENOWN 172

1

ANGUS

Hinds
Bull Test

Calved: 01/27/2022 Tattoo:172 Reg. #: 20417158

Monogram Renown 626
Monogram Renown 1279
Monogram Queen 422
S A V Renown 3439
Monogram Rose 1918
Monogram Rose 1396

BW	Adj. WW	WW Ratio	Adj. YW	End Test Wt	Test WDA	WDA Ratio	Test ADG	ADG Ratio						
90	818	100		1470	3.91	121	5.85	104						
	CED	BW	WW	YW	RADG	YH	SC	Doc	HP	CEM	Milk	MW	MH	\$EN
EPD	-1.9	+5.8	+71	+124						-1	+25			-29
ACC	0.05	0.05	0.05	0.05						0.05	0.05			
	CW	Marb	RE	Fat	\$M	\$W	\$F	\$G	\$B	\$C				
EPD	+49	+0.1	+83	-.017	+67	+47	+97	+28	+125	+229				
ACC	0.05	0.05	0.05	0.02										

Monogram Farms



MONOGRAM 115 RENOWN 821

2

ANGUS

Hinds
Bull Test

Calved: 11/09/2021 Tattoo: 821 Reg. #: 20417164

S A V Renown 3439
Monogram Renown 1158
Monogram Duchess 582
Monogram Net Worth 2838
Monogram Queen 2480
Monogram Queen 5273

BW	Adj. WW	WW Ratio	Adj. YW	End Test Wt	Test WDA	WDA Ratio	Test ADG	ADG Ratio						
70	727	104		1545	3.40	121	5.63	108						
	CED	BW	WW	YW	RADG	YH	SC	Doc	HP	CEM	Milk	MW	MH	\$EN
EPD	+7	-.7	+50	+77						+9	+27			-2
ACC	0.17	0.35	0.30	0.18						0.11	0.15			
	CW	Marb	RE	Fat	\$M	\$W	\$F	\$G	\$B	\$C				
EPD	+38	+0.15	+53	+0.11	+76	+54	+68	+28	+97	+202				
ACC	0.21	0.15	0.19	0.16										

Moonshine Angus Ranch



MAR CASH 202

3

ANGUS

Hinds
Bull Test

Calved: 09/20/2021 Tattoo: 202 Reg. #: 20279256

Sitz Dash 10277
Barstow Cash
Barstow Queen W16
Connealy Final Product
R B Lady 02-202
R B Lady Standard 305-02

BW	Adj. WW	WW Ratio	Adj. YW	End Test Wt	Test WDA	WDA Ratio	Test ADG	ADG Ratio						
				1370	2.71	97	6.83	131						
	CED	BW	WW	YW	RADG	YH	SC	Doc	HP	CEM	Milk	MW	MH	\$EN
EPD	+10	-.7	+61	+116	+27	+7	+62	+10	+15	+13	+23	+100	+5	-35
ACC	0.35	0.50	0.43	0.39	0.32	0.44	0.41	0.36	0.27	0.34	0.35	0.38	0.40	
	CW	Marb	RE	Fat	\$M	\$W	\$F	\$G	\$B	\$C				
EPD	+54	+0.84	+94	+0.13	+39	+52	+106	+66	+172	+262				
ACC	0.40	0.37	0.37	0.33										

Moonshine Angus Ranch



MAR Lady Alliance 202

4

ANGUS

*Hinds
Bull Test*

Calved: 11/08/2021 Tattoo: 202 Reg. #: 20364614

G A R Grid Maker
G A R Grid Maker 7992
G A R New Design 2609
Sitz Alliance 6595
Greenline Predestined 4065
Greenline Predestined U15

BW	Adj. WW	WW Ratio	Adj. YW	End Test Wt	Test WDA	WDA Ratio	Test ADG	ADG Ratio						
				1390	3.05	109	5.94	114						
CED	BW	WW	YW	RADG	YH	SC	Doc	HP	CEM	Milk	MW	MH	\$EN	
EPD	+1	+4.1	+58	+99	+16	+9	+22	+16	+11.9	+9	+24	+14	+3	+4
ACC	0.31	0.49	0.42	0.37	0.30	0.44	0.38	0.33	0.21	0.28	0.31	0.35	0.38	
CW	Marb	RE	Fat	\$M	\$W	\$F	\$G	\$B	\$C					
EPD	+27	+53	+42	+035	+75	+51	+55	+43	+97	+201				
ACC	0.39	0.35	0.35	0.31										

Blossom Hill Farm



BOULDER BHF 12J

5

SimAngus

*Hinds
Bull Test*

Calved: 08/19/2021 Tattoo: 12J Reg. #: 4041654

HOOVER DAM
CCR BOULDER 1339A
CCR MS L TAYLOR 1339Y
GW LUCKY DICE 187H
MISS CK MS 1/2 SIM 425W
IRVINGTON 265 3572 4225

BW	Adj. WW	WW Ratio	Adj. YW	End Test Wt	Test WDA	WDA Ratio	Test ADG	ADG Ratio		
69				1790	3.33	100	5.13	100		
CE	BW	WW	YW	ADG	MCE	Milk	MWW	Stay	Doc	
EPD	15.3	-2.4	65.0	103.9	0.24	8.8	22.2	54.6	14.9	10.4
ACC	0.22	0.24	0.23	0.23	0.20	0.22	0.23	0.18	0.22	
CW	YG	Marb	BF	REA	Shr	API	TI			
EPD	20.9	-0.30	0.45	-0.056	0.65	-0.48	142.5	78.7		
ACC	0.22	0.18	0.20	0.19	0.21	0.06				

Moonshine Angus Ranch



MAR Reserve Standard 077

6

ANGUS

*Hinds
Bull Test*

Calved: 09/9/2021 Tattoo: 077 Reg. #: 20284109

B/R New Day 454
V A R Reserve 1111
Sandpoint Blackbird 8809
LCC New Standard
R B Lady Standard 305-077
B A Lady 6807 305

BW	Adj. WW	WW Ratio	Adj. YW	End Test Wt	Test WDA	WDA Ratio	Test ADG	ADG Ratio						
				1385	2.68	96	5.80	111						
CED	BW	WW	YW	RADG	YH	SC	Doc	HP	CEM	Milk	MW	MH	\$EN	
EPD	+3	+7	+63	+112	+23	+1	+1.3	+18	+14.2	+3	+22	+97	+1.1	-33
ACC	0.36	0.51	0.45	0.40	0.34	0.46	0.42	0.38	0.27	0.34	0.37	0.39	0.42	
CW	Marb	RE	Fat	\$M	\$W	\$F	\$G	\$B	\$C					
EPD	+58	+53	+83	-.015	+45	+53	+106	+52	+158	+250				
ACC	0.42	0.39	0.38	0.35										

Monogram Farms



MONOGRAM 115 RENOWN 1041

7

ANGUS

Hinds
Bull Test

Calved: 09/23/2021 Tattoo: 1041 Reg. #: 20417165

S A V Renown 3439
Monogram Renown 1158
Monogram Duchess 582
HARB Pendleton 765 J H
Monogram Evergreen 2401
Monogram Evergreen

BW	Adj. WW	WW Ratio	Adj. YW	End Test Wt.	Test WDA	WDA Ratio	Test ADG	ADG Ratio						
72	428	100		1295	2.58	92	5.67	108						
	CED	BW	WW	YW	RADG	YH	SC	Doc	HP	CEM	Milk	MW	MH	\$EN
EPD	+7	-.1	+51	+83						+9	+29			-9
ACC	0.18	0.35	0.22	0.18						0.11	0.15			
	CW	Marb	RE	Fat	\$M	\$W	\$F	\$G	\$B	\$C				
EPD	I +44	I +.18	I +.46	I +.036	+55	+54	+81	+27	+108	+195				
ACC	0.05	0.05	0.05	0.05										

Monogram Farms



MONOGRAM 80 RENOWN 311

8

ANGUS

Hinds
Bull Test

Calved: 10/11/2021 Tattoo: 311 Reg. #: 20417161

Monogram Renown 626
Monogram 62 Renown 1409
Monogram Queen 2100
Monogram 46 BN 1156
Monogram Elba 1429
Monogram Elba 793

BW	Adj. WW	WW Ratio	Adj. YW	End Test Wt.	Test WDA	WDA Ratio	Test ADG	ADG Ratio						
72	625	89		1425	2.96	106	4.87	93						
	CED	BW	WW	YW	RADG	YH	SC	Doc	HP	CEM	Milk	MW	MH	\$EN
EPD	+1	+2.2	+47	+82						+4	+29			-8
ACC	0.16	0.32	0.25	0.12						0.06	0.08			
	CW	Marb	RE	Fat	\$M	\$W	\$F	\$G	\$B	\$C				
EPD	+23	+19	+33	+023	+77	+45	+65	+26	+91	+195				
ACC	0.17	0.12	0.16	0.13										

Moonshine Angus Ranch



MAR New Design 203

9

ANGUS

Hinds
Bull Test

Calved: 11/16/2021 Tattoo: 203 Reg. #: 20364613

G A R Grid Maker
G A R Grid Maker 7992
G A R New Design 2609
N Bar Emulation EXT
Greenline Blackbird 4101
Greenline Blackbird 1016

BW	Adj. WW	WW Ratio	Adj. YW	End Test Wt.	Test WDA	WDA Ratio	Test ADG	ADG Ratio						
				1135	2.53	79	5.45	96						
	CED	BW	WW	YW	RADG	YH	SC	Doc	HP	CEM	Milk	MW	MH	\$EN
EPD	-3	+4.7	+61	+103	+21	+1	+16	+28	+7.8	+8	+23	+67	+6	-20
ACC	0.30	0.48	0.41	0.36	0.29	0.43	0.37	0.32	0.20	0.28	0.31	0.34	0.37	
	CW	Marb	RE	Fat	\$M	\$W	\$F	\$G	\$B	\$C				
EPD	+38	+58	+50	+022	+51	+45	+73	+47	+120	+207				
ACC	0.38	0.34	0.34	0.30										

Moonshine Angus Ranch



MAR Bravo 680

10

ANGUS

*Hinds
Bull Test*

Calved: 10/26/2021 Tattoo: 680 Reg. #: 20273426

Coleman Charlo 0256
Coleman Bravo 6313
Coleman Donna 714
Coleman Alliance 6156
Coleman Miss Wix 0204
Coleman Miss Wix 7138

BW	Adj. WW	WW Ratio	Adj. YW	End Test Wt	Test WDA	WDA Ratio	Test ADG	ADG Ratio						
				1170	2.49	89	3.79	73						
EPD	CED	BW	WW	YW	RADG	YH	SC	Doc	HP	CEM	Milk	MW	MH	\$EN
+13	+13	-.2	+40	+79	+.19	+.2	+.62	+10	+11.1	+11	+27	+3	-.3	+8
ACC	0.32	0.47	0.41	0.37	0.28	0.40	0.38	0.36	0.22	0.30	0.33	0.35	0.36	
EPD	CW	Marb	RE	Fat	\$M	\$W	\$F	\$G	\$B	\$C				
+22	+22	+.18	+.35	+.027	+74	+45	+64	+26	+90	+191				
ACC	0.36	0.32	0.32	0.28										

Verell Farms



Balancer Bull Tag 19

11

GELBVIEW BALANCER

*Hinds
Bull Test*

Calved: 08/26/2021 Tattoo: 19 Non-registered

TAU Outright 162A
TJB 220Y OUTRIGHT 5125D ET
TJB Velvet 908U 220Y

Commercial Angus Cow

BW	Adj. WW	WW Ratio	Adj. YW	End Test Wt	Test WDA	WDA Ratio	Test ADG	ADG Ratio
				1535	2.90	111	5.40	108

Verell Farms



Balancer Bull Tag 148

12

GELBVIEW BALANCER

*Hinds
Bull Test*

Calved: 09/17/2021 Tattoo: 148 Non-registered

TAU Outright 162A
TJB 220Y OUTRIGHT 5125D ET
TJB Velvet 908U 220Y

Commercial Angus Cow

BW	Adj. WW	WW Ratio	Adj. YW	End Test Wt	Test WDA	WDA Ratio	Test ADG	ADG Ratio
				1315	2.59	99	5.58	111

Verell Farms



Balancer Bull Tag 24

13

GELBVIEW BALANCER

*Hinds
Bull Test*

Calved: 08/18/2021 Tattoo: 24 Non-registered

TAU Outright 162A
TJB 220Y OUTRIGHT 5125D ET
TJB Velvet 908U 220Y

Commercial Angus Cow

BW	Adj. WW	WW Ratio	Adj. YW	End Test Wt	Test WDA	WDA Ratio	Test ADG	ADG Ratio
				1375	2.56	98	5.40	108

Verell Farms



Balancer Bull Tag 23

14

GELBVIEWH BALANCER

*Hinds
Bull Test*

Calved: 08/18/2021 Tattoo: 23 Non-registered

TAU Outright 162A
TJB 220Y OUTRIGHT 5125D ET
TJB Velvet 908U 220Y

Commercial Angus Cow

BW	Adj. WW	WW Ratio	Adj. YW	End Test Wt	Test WDA	WDA Ratio	Test ADG	ADG Ratio
				1460	2.71	104	4.55	91

Verell Farms



Balancer Bull Tag 143

15

GELBVIEWH BALANCER

*Hinds
Bull Test*

Calved: 08/26/2021 Tattoo: 143 Non-registered

TAU Outright 162A
TJB 220Y OUTRIGHT 5125D ET
TJB Velvet 908U 220Y

Commercial Angus Cow

BW	Adj. WW	WW Ratio	Adj. YW	End Test Wt	Test WDA	WDA Ratio	Test ADG	ADG Ratio
				1260	2.41	92	4.64	93

Verell Farms



Balancer Bull Tag 150

16

GELBVIEWH BALANCER

*Hinds
Bull Test*

Calved: 10/01/2021 Tattoo: 150 Non-registered

TAU Outright 162A
TJB 220Y OUTRIGHT 5125D ET
TJB Velvet 908U 220Y

Commercial Angus Cow

BW	Adj. WW	WW Ratio	Adj. YW	End Test Wt	Test WDA	WDA Ratio	Test ADG	ADG Ratio
				1255	2.54	97	4.46	89

Mississippi State University



MSU Power Play J122



ANGUS

Calved: 08/28/2021 Tattoo: J122 Reg. #: *20332596

Basin Payweight 1682
V A R Power Play 7018
Sandpoint Blackbird 8809
G A R New Design 5050
MSU Forever Lady X148
MSU Forever Lady T135

Lot 17

BW	Adj. WW	WW Ratio	Adj. YW	YW Ratio	Adj. IMF	IMF Ratio	Adj. REA	REA Ratio						
70	633	100	1063	100	3.53	104	12.5	98						
EPD	CED	BW	WW	YW	RADG	DMI	YH	SC	HP	CEM	Milk	MW	MH	\$EN
+10	I+10	I+0.7	I+70	I+121	I+0.27	I+0.95	I+0.8	I+0.48	I+7.7	I+12	I+32	I+67	I+0.7	-25
ACC	0.05	0.05	0.05	0.05	0.05	0.05	0.05	0.05	0.05	0.05	0.05	0.05	0.05	
EPD	CW	Marb	RE	Fat	\$M	\$W	\$F	\$G	\$B	\$C				
+49	+49	+0.69	+0.50	+0.020	+58	+74	+90	+53	+143	+243				
ACC	0.05	0.05	0.05	0.05										

Mississippi State University



MSU Rolex J126



ANGUS

Calved: 09/04/2021 Tattoo: J126 Reg. #: 20332529

Baldrige Colonel C251
EXAR Rolex 8709B
Exar Royal Lass 1067
G A R New Design 5050
MSU Forever Lady X148
MSU Forever Lady T135

Lot 18

BW	Adj. WW	WW Ratio	Adj. YW	YW Ratio	Adj. IMF	IMF Ratio	Adj. REA	REA Ratio						
63	579	100	1104	100	3.16	93	11.5	90						
EPD	CED	BW	WW	YW	RADG	DMI	YH	SC	HP	CEM	Milk	MW	MH	\$EN
+9	I+9	I+0.7	I+59	I+109	I+0.28	I+0.72	I+0.72	I+0.41	I+6.8	I+13	I+36	I+59	I+0.7	-23
ACC	0.05	0.05	0.05	0.05	0.05	0.05	0.05	0.05	0.05	0.05	0.05	0.05	0.05	
EPD	CW	Marb	RE	Fat	\$M	\$W	\$F	\$G	\$B	\$C				
+53	+53	+0.59	+0.63	+0.004	+52	+65	+98	+51	+149	+245				
ACC	0.05	0.05	0.05	0.05										

Mississippi State University



MSU Growth Fund J134



ANGUS

Calved: 09/14/2021 Tattoo: J134 Reg. #: 20329906

Basin Payweight 1682
Deer Valley Growth Fund
Deer Valley Rita 36113
G A R New Design 5050
MSU Forever Lady X148
MSU Forever Lady T135

Lot 19

BW	Adj. WW	WW Ratio	Adj. YW	YW Ratio	Adj. IMF	IMF Ratio	Adj. REA	REA Ratio						
77	573	100	1051	100	3.25	96	12.5	98						
EPD	CED	BW	WW	YW	RADG	DMI	YH	SC	HP	CEM	Milk	MW	MH	\$EN
+10	I+10	I+0.4	I+71	I+128	I+0.29	I+1.16	I+0.9	I+0.47	I+6.8	I+13	I+36	I+72	I+0.7	-29
ACC	0.05	0.05	0.05	0.05	0.05	0.05	0.05	0.05	0.05	0.05	0.05	0.05	0.05	
EPD	CW	Marb	RE	Fat	\$M	\$W	\$F	\$G	\$B	\$C				
+59	+59	+0.44	+0.56	+0.028	+61	+77	+106	+41	+147	+252				
ACC	0.27	0.24	0.27	0.23										

Mississippi State University



MSU Counselor J135

Balanced, Terminal

Lot 20

ANGUS

Calved: 09/15/2021 Tattoo: J135 Reg. #: 20331426

Connealy Counselor
Hoover Counselor N29
Erica of Ellston G366
Tanner Onward X316
MSU Lady Onward B090
MSU Southern Lady Y006

BW	Adj. WW	WW Ratio	Adj. YW	YW Ratio	Adj. IMF	IMF Ratio	Adj. REA	REA Ratio						
62	560	99	979	99	2.42	91	13.4	99						
CED	BW	WW	YW	RADG	DMI	YH	SC	HP	CEM	Milk	MW	MH	\$EN	
EPD	+8	+0.7	+56	+98	I+0.23	I+0.63	I+0.4	I+1.40	I+14.1	+6	+26	I+50	I+0.3	-14
ACC	0.22	0.35	0.31	0.22	0.05	0.05	0.05	0.29	0.05	0.17	0.17	0.05	0.05	
CW	Marb	RE	Fat	\$M	\$W	\$F	\$G	\$B	\$C					
EPD	+48	+0.37	+0.80	-0.018	+60	+53	+96	+45	+141	+243				
ACC	0.23	0.19	0.23	0.19										

Mississippi State University



MSU Counselor J158

Balanced, Terminal

Lot 21

ANGUS

Calved: 09/27/2021 Tattoo: J158 Reg. #: 20331423

Connealy Counselor
Hoover Counselor N29
Erica of Ellston G366
EXAR Complete 3745B
TPC Miss Exar 3745 536
R&R Everelda 1172

BW	Adj. WW	WW Ratio	Adj. YW	YW Ratio	Adj. IMF	IMF Ratio	Adj. REA	REA Ratio						
68	608	108	1035	105	3.46	130	14.4	107						
CED	BW	WW	YW	RADG	DMI	YH	SC	HP	CEM	Milk	MW	MH	\$EN	
EPD	+6	+2.7	+62	+112	I+.24	I+1.13	I+.5	I+1.37	I+11.1	+7	+36	I+53	I+.2	-23
ACC	0.21	0.35	0.30	0.21	0.05	0.05	0.05	0.27	0.05	0.14	0.15	0.05	0.05	
CW	Marb	RE	Fat	\$M	\$W	\$F	\$G	\$B	\$C					
EPD	+48	+0.96	+0.85	+0.006	+59	+61	+89	+71	+160	+267				
ACC	0.23	0.18	0.22	0.19										

Mississippi State University



MSU Counselor J160

Balanced, Terminal

Lot 22

ANGUS

Calved: 09/27/2021 Tattoo: J160 Reg. #: 20331421

Connealy Counselor
Hoover Counselor N29
Erica of Ellston G366
S A V Final Answer 0035
MSU New Design C080
MSU New Design Y054

BW	Adj. WW	WW Ratio	Adj. YW	YW Ratio	Adj. IMF	IMF Ratio	Adj. REA	REA Ratio					
68	553	98	990	100	2.40	90	12.7	94					
CED	BW	WW	YW	RADG	DMI	YH	SC	HP	CEM	Milk	MW	MH	\$EN
EPD	+6	+1.4	+60	+107		I+.5	I+1.33		+4	+32	I+56	I+.4	-18
ACC	0.23	0.36	0.31	0.23		0.05	0.23		0.17	0.18	0.05	0.05	
CW	Marb	RE	Fat	\$M	\$W	\$F	\$G	\$B	\$C				
EPD	+45	+0.53	+0.64	+0.012	+73	+60	+87	+48	+135	+248			
ACC	0.24	0.20	0.24	0.20									

Mississippi State University



MSU Counselor J180
 ★★ **Balanced, Terminal**
ANGUS

Connealy Counselor
Hoover Counselor N29
Erica of Ellston G366
Basin Excitement
MSU Ritas Excitement E063
MSU Ritas Answer A088

Lot 23

Calved: 10/14/2021 Tattoo: J180 Reg. #: 20183448

BW	Adj. WW	WW Ratio	Adj. YW	YW Ratio	Adj. IMF	IMF Ratio	Adj. REA	REA Ratio						
75	637	113	1061	107	2.40	90	13.6	101						
	CED	BW	WW	YW	RADG	DMI	YH	SC	HP	CEM	Milk	MW	MH	\$EN
EPD	+5	+2.0	+70	+126	I+.26	I+1.03	I+.5	I+1.77	I+16.3	+5	+33	I+52	I+.2	-23
ACC	0.23	0.35	0.31	0.21	0.05	0.05	0.05	0.28	0.05	0.18	0.18	0.05	0.05	
	CW	Marb	RE	Fat	\$M	\$W	\$F	\$G	\$B	\$C				
EPD	+56	+5.0	+69	+0.15	+74	+68	+102	+47	+149	267				
ACC	0.24	0.19	0.23	0.20										

Mississippi State University



MSU Blueprint J130 ET
 ★★ **Balanced, Terminal**
HEREFORD

R LEADER 6964
BOYD 31Z BLUEPRINT 6153
NJW 91H 100W RITA 31Z ET
CMR GVP MR MATERIAL156T
GRNDVW CMR 156T MATTIE Y511 ET
DJB 46B BETH 1L

Lot 24

Calved: 9/10/2021 Tattoo: J130 Reg. #:44301380

BW	Adj. WW	WW Ratio	Adj. YW	YW Ratio	Adj. IMF	IMF Ratio	Adj. REA	REA Ratio				
50	550	100	843	100	1.58	100	11.64	100				
	CED	BW	WW	YW	DMI	Sust. Cow Fert	Milk	Milk & Growth	CEM	MW	Udder	Teat
EPD	3.4	1.9	57	84	-0.1	19.5	33	61	4.2	73	1.40	1.50
ACC	0.37	0.27	0.26	0.26	0.09	0.20	0.24		0.28	0.21	0.28	0.29
	CW	Marb	RE	Fat	BMI Index	BII Index	CHB Index					
EPD	72	0.08	0.63	0.031	410	482	120					
ACC	0.03	0.03	0.03	0.03								

Mississippi State University



MSU Frontier J147
 ★★ **Balanced, Terminal**
HEREFORD

TH 403A 475Z PIONEER 358C ET
TH FRONTIER 174E
FTF TRUSTING LADY 312A
H SWSN ON TARGET 5243
MSU MISTER MOM G092
MSU MISTER MOM B075

Lot 25

Calved: 9/21/2021 Tattoo: J147 Reg. #: 44353789

BW	Adj. WW	WW Ratio	Adj. YW	YW Ratio	Adj. IMF	IMF Ratio	Adj. REA	REA Ratio				
62	583	107	1085	100	1.48	89	13.37	12.94				
	CED	BW	WW	YW	DMI	Sust. Cow Fert	Milk	Milk & Growth	CEM	MW	Udder	Teat
EPD	4.1	2.6	70	111	0.2	14.7	37	72	-0.1	96	1.20	1.20
ACC	0.34	0.34	0.26	0.27	0.10	0.12	0.17		0.23	0.15	0.22	0.22
	CW	Marb	RE	Fat	BMI Index	BII Index	CHB Index					
EPD	68	-0.06	0.47	0.061	324	399	100					
ACC	0.11	0.14	0.10	0.14								

MBK Cattle



MBK King Arthur 925J
 ★★ Balanced, Terminal

LLSF UPRISING Z925
 HILB ORACLE C033R
 SS BABYS BREATH P035
 WLE COPACETIC E02
 DILLONS GUINEVERE
 DILLONS ELEGANCE

Lot 32

SIMANGUS

Calved: 12/28/2021 Tattoo: 925J Reg. #: 4066717

BW	Adj. WW	WW Ratio	Adj. YW	YW Ratio	Adj. IMF	IMF Ratio	Adj. REA	REA Ratio
75	598	102						

	CE	BW	WW	YW	ADG	MCE	Milk	MWW	Stay	Doc
EPD	10.5	1.1	79.9	116.1	0.23	4.4	19.0	58.9	11.8	14.5
ACC	0.27	0.33	0.30	0.29	0.29	0.20	0.17	0.23	0.15	0.24

	CW	YG	Marb	BF	REA	Shr	API	TI
EPD	24.7	-0.44	0.20	-0.089	0.88	-0.15	114.8	76.2
ACC	0.21	0.17	0.20	0.20	0.20	0.05		

MBK Cattle



MBK Redman 372K

W/C LOADED UP 1119Y
 GEF COUNTY O
 RUBY NFF RHYTHM 475B
 WHEATLAND BULL 680S
 HALEYS HOT STUFF D372
 STF MISS GUNNER T787

Lot 33

SIMMENTAL

Calved: 1/17/2022 Tattoo: 372K Reg. #: 4066714

BW	Adj. WW	WW Ratio	Adj. YW	YW Ratio	Adj. IMF	IMF Ratio	Adj. REA	REA Ratio
88	581	99						

	CE	BW	WW	YW	ADG	MCE	Milk	MWW	Stay	Doc
EPD	3.3	4.8	76.0	114.6	0.24	-0.2	15.8	53.8	17.1	8.2
ACC	0.22	0.31	0.28	0.26	0.26	0.18	0.17	0.22	0.15	0.20

	CW	YG	Marb	BF	REA	Shr	API	TI
EPD	26.8	-0.52	-0.10	-0.1.00	1.05		104.1	65.6
ACC	0.22	0.17	0.19	0.17	0.20			