

Mississippi Beef Cattle Improvement Association

Mississippi Beef Cattle Improvement Association—Productivity and Quality



Upcoming events:

- April 6—Cattlemen's Exchange Feeder Calf Board Sale, Winona, MS
- April 8—Magnolia Beef and Poultry Expo, Raleigh, MS
- April 16—Beef Cattle Boot Camp, Prairie Research Unit, Prairie, MS, 9:00 a.m. to 3:30 p.m.
- April 17—Beef Cattle Boot Camp, Brown Loam Station, Raymond, MS, 9:00 a.m. to 3:30 p.m.
- June 28-July 1—Beef Improvement Federation annual meeting, Columbia, MO
- August 2—Mississippi Homeplace Producers Feeder Calf Board Sale, Hattiesburg, MS
- September 1—Mississippi BCIA Fall Bull Sale nomination deadline
- October 14-16—MSU Artificial Insemination School, Mississippi State, MS

Inside this issue:

Beef Cattle Boot Camps	2
Cattle Market Information Online	2
MS to Host NCBA Region II	3
MS Beef Council Website Update	3
MBCIA Membership Application	4
Udder Soundness Scoring	4

Mississippi BCIA—Hinds Bull Test 2010 Spring Bull Sale Results

The Mississippi Beef Cattle Improvement Association wrapped up its 3rd Annual Spring Bull Sale on March 4, 2010. The MBCIA Spring Bull Sale was held in conjunction with the Hinds Community College Bull Test Sale in Raymond, MS. The MBCIA Sale featured 18 performance-backed bulls from breeders across the state, while the Hinds Bull Test Sale featured 21 bulls. Thank you to all of the consignors and buyers for supporting these Spring 2010 bull sales.

The top-selling lot was MSU Midland 5251 U053, an Angus bull. This bull was consigned by the Mississippi Agricultural and Forestry Experiment Station of Mississippi State, MS and sold for \$3,300. Other breeders marketing bulls in the Hinds Test sale included 4J Beefmaster, AOK Gelbvieh, Double W Ranch, Monogram Farms, Woods Angus, and Yankee Cutoff Angus Ranch. In the MBCIA sale other consignors included Loveless Homeplace Angus, Phil Slay Farms, Southern Shine Pastures, and Thames Angus Farms. Two bulls sold over interactive video to bidders in Batesville, MS.

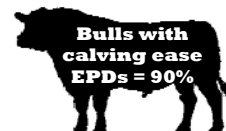
All breeds—39 bulls
Gross receipts—\$76,700
Average price—\$1,967
High-selling lot—\$3,300

Angus—29 bulls
Gross receipts—\$60,900
Average price—\$2,100
High-selling lot—\$3,300

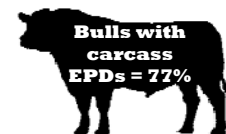
Beefmaster—1 bull
Gross receipts—\$650
Average price—\$650
High-selling lot—\$650

Brangus—1 bull
Gross receipts—\$1,100
Average price—\$1,100
High-selling lot—\$1,100

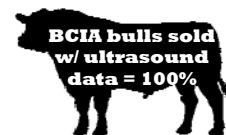
Charolais—5 bulls
Gross receipts—\$8,450
Average price—\$1,690
High-selling lot—\$2,000



Gelbvieh—1 bull
Gross receipts—\$950
Average price—\$950
High-selling lot—\$950



SimAngus—2 bulls
Gross receipts—\$4,650
Average price—\$2,325
High-selling lot—\$2,350



Buyer appreciation is extended to: Dalton Moak, Kendall Traxler, Ray Jordan, Gary Biggers, Bernice Dobbins, Lester White, Clyde W. Reves, Jerry Windham, Myers Farm, Pattridge Farms, Ben Washburn, Canada Farms, Oak Hill Farm, Brett Hutchins, Gaddis Farms, Bartand Farms, Stevens Farms, Michael Smith, Terry Hunt, Woodrow Martin, Dan Barnes, Lee Herren, Larry Iles, Jenny Strong, Steve Cumberland, George Williams, and Carl Heinrich. Thanks also goes out to our friends at Hinds Community College for help both in hosting and conducting the sale.

Mississippi BCIA looks forward to another successful bull sale in Raymond, Mississippi on November 11, 2010. Breeders interested in nominating bulls to the Fall BCIA Bull Sale should complete and submit nomination forms to the MBCIA office by September 1, 2010. Bull sale rules, nomination forms, and other information on Mississippi BCIA are available on the BCIA website at: msucares.com/livestock/beef/mbcia/ or by contacting an office of the Mississippi State University Extension Service.

Contact Kenny Baner at 601-857-3351 for information on the 2009-2010 Hinds Community College Bull Test.



BEEF CATTLE BOOT CAMP

The boot camps are a new opportunity to gain hands-on experience with cattle management skills.

Beef Cattle Boot Camps

The Beef Cattle Boot Camps offered through the Mississippi State University Extension Service and Mississippi Agricultural and Forestry Experiment Stations (MAFES) are a new opportunity to gain hands-on experience with cattle management skills.

The 2010 Boot Camps are scheduled for Friday, April 16, 2010 at the MAFES Prairie Research Unit in Prairie, MS and Saturday, April 17, 2010 at the Brown Loam Branch Experiment Station in Raymond, MS. The program will be the same at each location.

Boot Camp topics include forage scenarios, hay storage demonstrations, feed valuation, tractor safety, beef cattle research overviews, cattle facility troubleshooting, cattle shrink, calf processing, freeze branding, and body condition management.

Registration fees are \$35 per person attending and include lunch and Boot Camp notebooks. For more information on the Beef Cattle Boot Camps, contact Jane Parish, in the MSU Animal and Dairy Sciences Department at jparish@ads.msstate.edu or 662-325-7466. Boot Camp brochures are available online at msucares.com/livestock/beef/beefcattlebootcamp.pdf.



Cattle Market Information Available Online

The latest cattle market information is easily accessible on the Internet. Dr. John Michael Riley, Extension Livestock Economist with the Mississippi State University Extension Service, provides regular updates of market prices, trends, and fundamentals.

These market updates include cattle (feeders, stockers, fats, market cows and bulls), production input (grains, commodity feeds, hay), and end product (meats) market information. This market information includes detailed explanations of market influences to help producers use this information in their operations.

Podcasts of Current Cattle Market Topics

- Cattle market commentary in audio form

Cattle Market Notes & In the Cattle Markets

- Recap of the previous week's live and feeder cattle and beef cash market
- Published early in the week
- Can subscribe to e-mail distribution

Weekly Wrap

- Recap of the week's futures market trade related to cattle
- Published on Fridays
- Can subscribe to e-mail distribution

MS State Commodity Marketing Tweets

- Livestock and crop market information on Twitter

Links to all of these information resources are available on the following website:

msucares.com/livestock/beef/cattle_market.html

For more information on livestock marketing or economics contact:

Dr. John Michael Riley
MSU Department of Agricultural Economics
Office: 662-325-7986
Fax: 662-325-8777
Email: jriley@ext.msstate.edu

"...Regular, current cattle market updates are available to Mississippi beef cattle producers."

Mississippi to Host NCBA Region II Meeting

Mississippi will host the National Cattlemen's Beef Association (NCBA) Region II meeting on April 23-24, 2010. The meetings will be held in Jackson, MS and will include a tour on the first day of the meetings. Region II includes 8 Southeastern states spanning from Louisiana to North Carolina.

Friday, April 23 Tour Schedule

Tour Departs Hampton Inn, Greymont St., Jackson, MS at 9:00 a.m.

- Brown Loam Experiment Station - Research & GrowSafe
- Hinds Community College Bull Test Station for lunch
- Gaddis Farms - 25,000 acre diversified operation
- Sedgewood Plantation - Registered Angus
- Mississippi Agriculture & Forestry Museum, 3:30 p.m.
- National Agricultural Aviation Museum
- Dinner at the Ag Museum, 6:00 p.m.

Saturday, April 24

8:30 a.m. - Meetings begin MS Trade Mart on the State Fairgrounds in Jackson, MS

- Scott George, NCBA Federation Division Chairman

- Colin Woodall, NCBA Director of Legislative Affairs
- Lana Slaten, President ANCW
- Jill Ginn, President Elect ANCW

Registration Fees

- Friday (All Events) \$70
- Friday (Dinner Only) \$30
- Friday (Tour Only) \$45
- Saturday (Only) \$20
- Friday & Saturday (All events) \$90

Host Hotel

Hampton Inn and Suites
320 Greymont Avenue, Jackson, MS
Phone: (601) 352-1700
Rate: \$89 per night/Standard & Double
Ask for the MS Cattlemen's Discount
Reservation deadline - April 8th, 2010

For more information on the NCBA Region II meeting contact:
Mississippi Cattlemen's Association
680 Monroe St., Suite A
Jackson, MS 39202
Office: (601) 354-8951
Fax: (601) 355-7128

A registration form is available online at:
www.ms cattlemen.org

"...The first day of the meetings includes tours of cattle operations in the Jackson area."

Mississippi Beef Council Website Retooled

The Mississippi Beef Council (MBC) recently launched a new website. The site has been redesigned to include many new features. Streaming videos, 3D animation media, and search tools are just some of the website features.

The MBC website focuses on beef promotion. It is a great resource for beef recipes, cooking instructions, and information on beef nutrition and safe handling. It also contains news updates about ongoing Beef Checkoff activities. Links to industry research summaries, producer testimonials, and Beef Quality Assurance program information are located on the website.

Check out the new MBC website at:
www.msbeef.org

The screenshot displays the Mississippi Beef Council website interface. At the top, there are navigation links for Home, Contact, and Search. The main header features the Mississippi Beef Council logo and a large image of a steak. Below the header is a horizontal menu with tabs for 'The Beef Story', 'Cook's Corner', 'Beef Nutrition', 'Beef Safety', 'The Latest', and 'About Us'. The main content area is divided into several sections: 'Power of Protein' with a text block and a 'Learn More >>' link; 'What's for Dinner?' featuring a video player and a list of recipes; 'Featured Information' with a list of links to various articles and resources; and a 'Checkoff News' section with a 'More news >>' link. The footer contains several logos and text, including 'It's What's for Dinner THE ULTIMATE ON-LINE RECIPE RESOURCE', 'BEEF So Simple YOUR RECIPE IN 10 MIN', 'ExploreBeef.org HOW BEEF GETS TO YOUR PLATE', and 'Beef Quality Assurance A SAFE, WHOLESONE AND HEALTHY BEEF SUPPLY'. Copyright information for the Mississippi Cattlemen's Association is also present at the bottom.

Mississippi Beef Cattle Improvement Association—Productivity and Quality

Mississippi Beef Cattle Improvement Assn.
Box 9815
Mississippi State, MS 39762

Phone: 662-325-7466
Fax: 662-325-8873
Email: jparish@ads.msstate.edu



Send questions or comments to Jane Parish,
Extension Beef Cattle Specialist,
Mississippi State University Extension Service

Jane Parish

Mississippi State University does not discriminate on the basis of race, color, religion, national origin, sex, sexual orientation or group affiliation, age, disability, or veteran status.



Visit MBCIA online at
<http://msucares.com/livestock/beef/mbcia/>

MBCIA Membership Application

Name: _____

Address: _____

City: _____

County: _____ State: _____ Zip: _____

Phone: _____ Email: _____

(Check one) Seedstock: Commercial:

Cattle breed(s): _____

Completed applications and \$5 annual dues or \$100 life-time dues payable to Mississippi BCIA should be mailed to:

*Mississippi Beef Cattle Improvement Association
Jane Parish, Extension Beef Cattle Specialist
Box 9815, Mississippi State, MS 39762*

Udder Suspension and Teat Size Scores

Udder soundness is a convenience trait that contributes directly to the profitability of a seedstock or commercial cow-calf operation. Udder and teat quality are among the most important functional traits of beef females. Unsound udders and teats are associated with reduced productive life and inferior calf performance, and poor udder and teat conformation is a major reason why cows are culled from the breeding herd.

The scoring system described to the right is designed to help producers evaluate differences in udder and teat quality of beef cows.

Udder suspension and teat size scores are numerical values that reflect differences in udder and teat quality. Udder suspension scores are subjective assessments of udder support and range from 9 (very tight) to 1 (very pendulous). Teat size scores are subjective assessments of teat length and circumference and range from 9 (very small) to 1 (very large). Udder and teat scores should be taken within 24 hours after calving, preferably by one person and on the weakest quarter.

Score	Udder Suspension		Teat Size	
	Description		Description	
9	Very tight		Very small	
7	Tight		Small	
5	Intermediate/moderate		Intermediate/moderate	
3	Pendulous		Large	
1	Very pendulous, broken floor		Very large, balloon-shaped	