



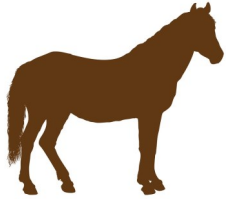
LAMAR COUNTY 4-H

4-H Shooting Sports

Open to youth ages 8-18 as of Jan 1, 2025. 4-H Shooting Sports includes Archery, Rifle, Pistol, Shotgun, Western Heritage, and Hunting Education. Registration will open in October 2024 for the 2025 season.



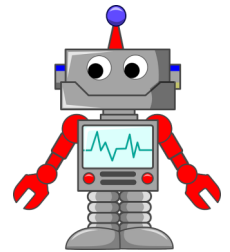
4-H Equine



Open to youth ages 8-18 as of Jan 1, 2024. Registration is open year round. The 4-H Equine Program includes learning and activities about all horse topics. Topics included are nutrition, husbandry, medicine, training, etc.

4-H STEAM

Open to youth ages 5-18 as of Jan 1, 2024. Registration is open year round. 4-H STEAM includes learning and activities about robot construction, robot operation, coding, science, technology, arts, mathematics, Lego's and engineering.



4-H Kayaking



Open to youth ages 8-18 as of Jan 1, 2024. Registration is open year round. 4-H Kayaking includes instruction on kayak anatomy, transportation, piloting, water safety, and care.

4-H Livestock

Open to youth ages 8-18 as of Jan 1, 2024. Registration is open year round. The 4-H Livestock program studies multiple species including beef cattle, dairy cattle, meat goats, dairy goats, lambs, hair sheep, and hogs.



4-H Drone's



Open to youth ages 8-18 as of Jan 1, 2024. This program is offered in 3 meeting short courses throughout the year. This program covers basic drone engineering and piloting.

4-H Rabbits

Open to youth ages 5-18 as of Jan 1, 2024. This new club is open for registration year round. This program will cover rabbit nutrition, husbandry, medicine, and much more!



4-H Poultry Chain



Open to youth ages 5-18 as of Jan 1, 2025. Registration will be open from January to May 2025. This program lets youth experience raising and caring for poultry.

CONTACT INFORMATION

Lamar County Extension Office

MSU 4-H Extension Agent—Lindsey Pansano

Mailing Address: P.O. Box 419 Purvis, MS 39475

Physical Address: 216 Shelby Street, Purvis, MS 39475

Phone #: 601-794-3910 Email: lv31@msstate.edu



-  Lamar County 4-H
-  Lamar County 4-H Sharpshooters
-  Lamar County 4-H Trail Makers Horse Club
-  Lamar County 4-H Outdoor Skills
-  Lamar County 4-H Junior Livestock Association
-  Lamar County 4-H STEAM Club
-  Lamar County 4-H Chicken Chain Gang
-  Lamar County 4-H Creek Travelers
-  Lamar County 4-H Bunny Sitters Club

If your child is interested in 4-H, but does not see a topic area they are interested in there may be other district or state wide opportunities available throughout the year. Please feel free to reach out to Lamar County 4-H at anytime regarding these opportunities.



**MISSISSIPPI STATE UNIVERSITY™
EXTENSION**

Mississippi State University is an equal opportunity institution. Discrimination in university employment, programs, or activities based on race, color, ethnicity, sex, pregnancy, religion, national origin, disability, age, sexual orientation, gender identity, genetic information, status as a U.S. veteran, or any other status protected by applicable law is prohibited. Questions about equal opportunity programs or compliance should be directed to the Office of Compliance and Integrity, 56 Morgan Street, P.O. 6044, Mississippi State, MS 39762, (662) 325-5839.

MSU Extension will provide reasonable accommodations to persons with disabilities or special needs. For disability accommodation, please contact Lindsey Pansano at 601-794-3910 or lv31@msstate.edu seven days prior to a program or event to request reasonable accommodation.